

# Garden State farms to hold open house

CLOVER HILL, N.J. — Three Hunterdon County, N.J. farms open their gates to the public on Sunday, Oct. 5, in what is billed as Agriculture In Action Day.

The three farms involved are located in the Clover Hill area, on or near the Somerset-Hunterdon County line, about four miles east of Flemington.

Host farmers are David Kyle, specializing in hogs

and field crops, Laine Bros. in association with George Conrad, corn, soybeans, wheat and hay; and Tom Kanach, a large dairy and grain operation.

"In action" will be large combines harvesting field corn, a chisel plow preparing a field for winter wheat planting; grain drying, handling and storage; chopping corn for silage.

The swine breeding

facility on the Kyle Farm will be open for inspection. You will be impressed by its cleanliness, efficiency, and the quality of the breeding stock.

The visit to the Kanach Farm will provide an opportunity to see a large, up-to-date dairy farm. The herd numbers over 100 milkers, plus youngstock. Modern milking equipment, feed storage and handling, and more will be demonstrated.

Each very, grain handling and drying equipment will highlight the stop at Laine Farm. Hosts will discuss the facility and the marketing of grain.

Coordinating "Ag in the Action Day" are Dave Kyle for the Somerset County Board of Agriculture, and

Fred Clucas, Oldwick, Hunterdon's Ag Board.

Clucas reports that wagons will be used to transport people from field to field and farm to farm. There'll be a guide on each wagon to provide information and answer questions. Activities begin at 10:00 a.m. and conclude at 3:00 p.m.

An added feature will be a pig roast arranged by host and co-chairman Kyle. Pork sandwiches and hamburgers will be available at a food stand for those interested.

With the exception of food, it's all FREE. This should be a good family outing. Remember, it's Sunday, October 5, with a rain-date of October 12.

# USDA reports grain reserve figures

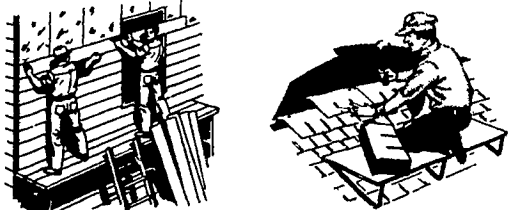
WASHINGTON, D.C. — There were 929 million bushels of feed grains and wheat in the three farmer-held grain reserves as of last Friday according to Ray Fitzgerald, administrator of the U.S. Department of Agriculture's Agricultural Stabilization and Conservation Service.

Date supplied via telephone by the USDA's state offices showed the following reserve activity since the previous report and the reserve net totals:

CROP —bushels—	REDEMPTIONS (bushels)	NEW ENTRIES (bushels)	TOTAL IN RESERVE (metric tons)
barley	28,000	139,000	9,214,000
corn	26,036,000	977,000	672,899,000
oats	597,000	61,000	16,509,000
sorghum	1,250,000	8,929	16,900,000
wheat	700,000	5,000	9,471,000
	1,152,000	1,462,000	213,605,000

The "total in reserve" figures for corn will not balance with the previously reported total; the previous report inadvertently failed to include 26.7 million bushels of corn in the reserves.

## ROOFING & SIDING



- ★ WHEELING CHANNELDRAIN® PRE-PAINTED GALVANIZED ROOFING & SIDING
- ★ SPOUTING
- ★ 1½" SUPRATHANE INSULATION
- ★ 3½" FIBERGLASS IN ROLLS
- ★ BLOWN IN INSULATION FOR CEILINGS

## FETTERVILLE SALES

JOHN M. ESH  
RD #2 East Earl, PA 17519  
Phone - 717-354-7561  
Rt. 322 & Fetterville Road

## Local bank tops farm lending list

HARRISBURG — Commonwealth National Bank, according to statistics compiled and released recently by the American Bankers Association, ranks as the leading bank in Pennsylvania for agricultural loans.

On a nationwide basis, Commonwealth National Bank ranks 27th among all banks in total agricultural loans.

The ABA report shows agricultural loans at Com-

monwealth National Bank totaled \$58,678,000 as of December 31, 1979. The total includes loans made directly through the bank's Agri-Loan Department as well as through its wholly-owned subsidiary, Commonwealth National Agri-Loan Corp. The 1979 total is a 5.3 percent increase over the December 31, 1978, figure of \$55,743,000.

Commonwealth National Agri-Loan Corp. was formed in 1970, when the bank had total agricultural loans of

\$11,486,000.

Robert P. Bucher, Lancaster, president of the subsidiary and vice president and manager of the Agri-Loan Department, points to two main factors for farm loan growth at Commonwealth National: "Our specialized staff and our ability to meet the credit needs of customers, by providing an alternate source of financing for them."

Another ingredient for success, according to Bucher, is the strength and diversity of the farm economy in the 20 central Pennsylvania counties that the subsidiary and department serve.

"Between the subsidiary

and the department, Commonwealth National can finance anything the farmer and his family need," said Bucher. For example, all operating needs, the expansion or remodeling of facilities and the purchase of equipment, livestock, and the farm itself.

PENNSYLVANIA AGRICULTURE



WE'RE GROWING BETTER

# A Demonstration of Bou-Matic Milking Will Convince You

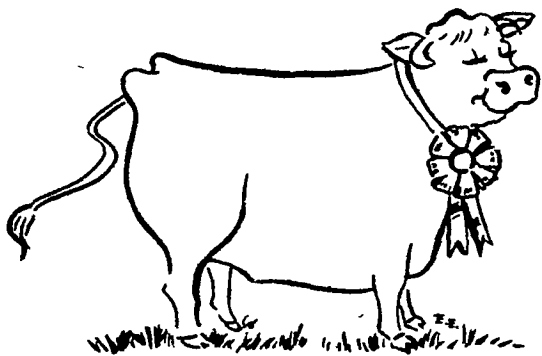
**MR. FARMER:**

**YOU TAKE CARE OF THIS END:**

- FEED • MANAGEMENT • BREEDING
- Bou-Matic Will Take Care Of The UDDER END!**

**AND THE PROFIT IS YOURS**

**DEMONSTRATIONS ARE FREE**  
Call Us For An Appointment



It's Performance that counts!

**PROFESSIONAL MILKING FOR THE MILKING PROFESSIONAL**

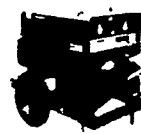
- PLANNING LAYOUTS • SALES • INSTALLATION • SERVICE

## SHENK'S FARM SERVICE

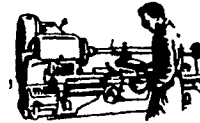
501 E. WOODS DRIVE, LITITZ, PA 17543  
PH: 717-626-1151

- ★ OUR SERVICE TRUCKS ARE RADIO DISPATCHED
  - ★ 24 HOUR SERVICE
- After Business Hours Phone: Paul Ropine - 717-626-2837  
Mervin Nissley - 717-872-4565

# Bou-Matic Herringbone Parlor



Machine Work  
Welding &  
Farm Supplies  
Hardware



## D.S. MACHINE SHOP

3816 E. NEWPORT RD., RD 1 GORDONVILLE, PA 17529  
1 Mile East of Intercourse on Rt. 772  
Write or Try and Call: 717-768-8569 (Outside Phone)  
Dealer Inquiries Invited

- Victor or Meco Cutting Torches
- Lincoln Welders • Hog & Cattle Gates
- Custom Built High Pressure Washers
- Coal Fired Bucket-A-Day Stoves
- New & Used Structural Pipe

**SPECIAL**

14 Piece Wrench Set . . . \$29.95

## STOLTZFUS MEAT MARKET

RETAIL MEAT MARKET  
**CORN FED BEEF**

- FRESH CUT BEEF & PORK
- FRESH EGGS RIGHT FROM THE FARM

★ **OUR OWN COUNTRY CURED HAMS, BACON AND SWEET BOLOGNA**

Orders Taken For Beef Sides; Wrapped And Ready For Your Freezer.



**Attention Farmers:**  
We Do Custom  
Beef Slaughtering

PH: 768-7166

Directions: 1 block east of Intercourse on Rt. 772  
Reg. Hours: Thurs. 9-5; Fri. 9-8; Sat. 8-5