

Public Sales Register

Closing Date - Monday, 5:00 P.M.
of each week's publication

SAT. OCT. 18 - 1:00 P.M. MD Shorthorn Assoc Annual Fall Calf Sale Held at the Frederick Fairgrounds, Frederick, MD. Sale Manager 717-359-7689.

SAT. OCT. 18 - 10:00 A.M. Real Estate at 1.00 P.M. Public Auction of valuable real estate consisting of 2 3/4 acres with 75 bartlett pear trees, lawn and garden equipment, shop tools, John Deere L tractor, antiques. Located in Paradise Twp. in Lancaster County on South Kinzer Rd., at Linville Hill Area Sale by Clarence S & Cieta M Lefever, Jr Auctioneers, Ira Stoltzfus and Son, Ph. 442-4936 or 442-8254 and J. Leary 354-0423.

MON. OCT. 20 - 9:30 A.M. Consignment Sale. Located at S. Race St., Myerstown Pa. 17067. Sale held by Wengers Farm Machinery, Inc.

MON. OCT. 20 - 7:00 P.M. Public Sale of 22 acre farm, located along Highville Rd., Rd 2, Conestoga, Manor Twp., Lancaster Co., PA 1/2 mile east of Highville Fire Co. Sale by Mr & Mrs Norman B. Bleacher Howard Shaub and Roy C. Probst Auctioneers.

TUES. OCT. 21 - Yearling Steers sell at Narrows Livestock Auction Market, Inc., Narrows, VA

TUES. OCT. 21 - 9 A.M. Sale of Household Goods, Tools, Anti-

ques & Some Farm Equipment Located on Noble Rd near Kirkwood Owner John A Lapp Carl & John Diller Auctioneers

THURS. OCT. 23 - Public Sale of Garage parts, tires, IHC parts, etc. Located Rt 222 in Wakefield, 17 miles south of Lancaster. Terms by Rankin Wiley & Son. Kreider and Petersheim, Auctioneers

THURS. OCT. 23 - 7 P.M. Roanoke Hollins Stockyard, Hollins, VA Special Graded Feeder Calf Sale

THURS. EVE. OCT. 23 - 5:30 P.M. Leon A Stoltzfus Public Auction of Garage and Shop Equipment, Vehicles, and Tires located along Route 41, 1 mile south of Gap, Pa. Sale by Leon A. Stoltzfus, Sale conducted by the J Omar Landis Auction Service, Jay M. Witman, Ephrata, Pa 17522

OCT 24 & 25 - Sale of Railroad Antiques, Held at Red Caboose Lodge, Strasburg Ron Funk Auctioneer

FRI OCT. 24 - 12:30 P.M. Dispersal of Dairy Herd, 45 head (31 Holstein, 14 Registered Brown Swiss) Milking Supplies, Located 20 miles east of Lancaster, PA, 2 miles west of Rt. 10 & 340, 1 mile east of Whitehorse, turn off Rt 340 on Plank Rd, third farm on left Terms by R. Guy Warner Auctioneer Robert E. Mar-

tin and Son, 656-7770 and Frank L Steller.

FRI OCT 24 - 11:00 A.M. Penstar Holstein Sale, held at Shady Lane Dairy Sale Barn, near Quarryville, Lancaster Co., PA Carl G. Troop Owner Managed by Remsburg Sale Service

SAT OCT. 25 - 11 A.M. Consignment Horse Sale at the Keister's Middleburg Auction Sales, Inc., Rt 522, 3 miles East of Middleburg, 5 miles West of Selinsgrove, Pa. Don & Walt Keister, Owners Ray Long & Dave Imes Auctioneers.

SAT OCT 25 - 10:00 A.M. Public Sale of Antiques, Tools and Household, Estate of Walter J Miller, Rd 2, Airville, PA Anna Mary Miler Owner Robert L Sechrist Auctioneer

SAT OCT 25 - 9:00 A.M. Public Sale of Real Estate, Fine Antiques, Household Goods, Mechanical Banks, Brass and Iron Articles Located along Main St., Village of Conestoga, Conestoga Twp., Lancaster Co PA Sale by Paul C Trissler Estate Howard Shaub and Roy C Probst Auctioneers.

SAT OCT. 25 - 10:00 A.M. Public Sale of Farm Equipment, Antiques & Collectibles and Personal Property Located in the Village of Fearnot, Hubley Twp., Schuylkill Co 2 miles west of Sacramento and Rt 25, 22 miles west of Pottsville, 45 miles NE of Harrisburg, PA Alvin A. Herner Owner George and Mike Deibert Auctioneers

SAT OCT 25 - 10:00 A.M. Public Sale of 15 acre farm, Farm Equipment, Household Goods and Antiques Located South of Martindale, Lancaster Co., Terms by Mrs Clayton Zimmerman Auctioneers Paul W. Horst and Lamar Senseng

SHADY LANE DAIRY SALES, INC.



Announces a new service to the new breed of businessmen farmer.

TOTAL HERD LEASING

How it works:

You select the stock or herd from our inventory

You take the cattle home and let them pay for themselves plus giving you additional cash as well as the offspring

You are not bound by a set price per head as with conventional lending. Rather the quality sets the price.

Here is an opportunity to acquire Registered and grade dairy cows carrying valuable calves without putting a large down payment down. Letting you use that money elsewhere to avoid high interest rates.

If you are looking for a hedge against inflation - Your set payments are made with tomorrows escalated dollars and income

If you're looking for tax advantages - The rental payments are a direct deduction from your earned income and You may be eligible for investment tax credit.

Nothing is free in life, but for the qualified man willing to go to work, here's a way to avoid the fluctuating high interest rates you have been paying.

Lease agreements tailored for your special needs.

For more information contact us soon.

SHADY LANE DAIRY SALES, INC.

- ★ Complete herd dispersals in our sales complex
- ★ Top individual registered & grade on auction
- ★ Complete Sales Service
- ★ Dairy private sales of individuals or herds
- ★ Total leasing for qualified dairymen

SHADY LANE DAIRY SALES INC.

Rd. #4 Box 463
Quarryville, Pa. 17566

5 GENERATIONS of experience and service striving to meet the needs of tomorrow's dairymen.

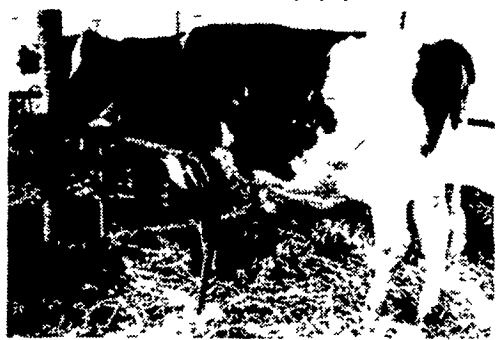
Owners
Glenn D. Fite 717-786-2750
David L. Fite 717-786-1725

FUTURE-VIEW FARM OF LANCASTER COUNTY REGISTERED & GRADE HOLSTEIN MILKING HERD DISPERSAL

Location: Smoketown Quality Dairy Sales, 5 miles East of Lancaster and 5 miles West of Intercourse, Pa.

TUESDAY EVE., OCTOBER 14

8:00 P.M. D.S.T.



1st Calf Heifer Sired By Gay Ideal

25 Registered 12 Grades Atlantic Sired & Bred to Atlantic Sires Sires represented: Hilltop Apollo Ivanhoe (1); Harrisburg Gay Ideal (6); Penstate Ivanhoe Star (4); K. Ivanhoe Jack (10); Whittier Farm Apollo Rocket (1); K. Whittier Elfac (1); Harborcrest Marcus (1); Proud Performer (1); N. Sovereign Pierre (1); Pietje Standout (1); Optimist (2); Winterthur Hector (1); bred to Marvex, Superior, Titan, Eric, Boots etc.

SPECIAL MENTION!! APOLLO DTR. BRED TO MARVEX FOR EARLY SUMMER. HER GAY IDEAL DTR. SELLS (RECENTLY FRESH)

(2) FULL SISTERS BY PENSTATE IVANHOE STAR DUE EARLY NOV. & JANUARY.

FAMILY: GRANDAM BY JACK BRED TO MARVEX, HER DTR. BY ELFAC, BRED TO TITAN, QR. DTR. BY PROUD PERFORMER BRED TO BOOTS.

3 SISTERS SELL! 2 ARE FULL SISTERS BY GAY, OTHER BY P. IVANHOE STAR (TRACE BACK TO LASSIE LEADER.

25 registered cows represent 5 different cow families. Foundation mainly from 1 herd in Bradford County Pa., remainder Canadian Bloodlines including Glenafton, Lassie Leader and Anthony. An all year round freshening herd. Several were fresh Aug. & Sept. 7 due Oct. thru Dec., some early winter cows, plenty size, are sharp with lots of dairyness, have not been pushed for top production not on test but many capable to produce 15,000 to 20,000 lbs. milk. All Vaccinated, 30 day tested, Pregnancy checked.

The Freys have been in the dairy business for 28 years and with great reluctance are discontinuing.

Owners:
ROSS AND NANCY FREY
Willow Street, Pa.

Catalogs at ringside
Sale Mgr. Gordon W. Fritz
Pedigrees: Henry Kettering
Carl Diller, Paul Snyder: Aucts.

Lunch: Bird-In-Hand Auxilliary
ALSO

Reg. Holstein Bull-Eng-Amer.-Ivanhoe Jerry. Dam-Elevation G.P. 83, 2 yr. 3 mos. 365d, 17,849M, 3.6T, 645F. Grandam-Gent G.P. 84, Lifetime 100,000 lbs. M.
One Grade Cow-Sire-Snowman, bred to Marvex, due Nov. 8. Record 3 yrs. 3 mos. 314d, 17,949M, 579F.