

Urban youth 4-H participation has more than tripled since 1970. Today, 23 percent of 4-H members reside in suburban areas of cities or central cities of more than 50,000 population. At the same time, 4-H continues to serve a large portion of farm youth

## State 4-H

(Continued from Page C18)

## Bradford County



**Danielle Yoder**  
Citizenship

contest, recognition night, and officers training. Danielle also participated in the 4-H Teen Recreation Weekend, Regional 4-H Leaders Conference, Regional 4-H Demonstration Day, State 4-H Capital Days, State 4-H Achievement Days, and 4-H Exchange Program.

She was Berks County Outstanding Girl in 1979 and the state's representative to the West Virginia Older Youth Conference.

"4-H has given me an opportunity to meet people. It has taught me responsibility, not only in 4-H, but in everything I do," said Danielle.



**Jean Sullivan**  
Citizenship

The daughter of Mr. and Mrs. Patrick Sullivan, Jean is a sophomore at Marywood College. She has been a 4-H member for 10 years.

A member of the Evergreen 4-H Club, she served as president, vice president, and song leader. She also assisted with club activities and events as a teen leader.

The state citizenship contest winner completed projects in foods and nutrition, clothing and textiles, child care, money management, pet care, crafts, health, gardening, citizenship, conservation, and teen leadership.

Locally, Jean took part in the 4-H roundup, county demonstration day, leaders forum, dress revue, and 4-H government seminar.

She also participated in Regional 4-H Dress Revue, Regional 4-H Demonstration Day, State 4-H Achievement Day, Pennsylvania 4-H Leadership Congress, and PAFC Summer Youth Institute.

She was a county 4-H winner in the foods and nutrition and dress revue categories.

Commenting on the values of the educational youth program Jean said: "4-H helped me to assume responsibility at home, in clubs, school, and community. It has taught me to enjoy helping others, especially the elderly and children."

and nutrition, home improvement, bicycling, pet care, and woodworking.

Locally, she took part in 4-H day camp, demonstration night, roundup, exchange program, leaders forum, fair, poster contest, and fashion revue.

Marla also participated in the Regional 4-H Teen Leaders Retreat, Regional 4-H Demonstration Day, District 4-H Camp, Farm Show, Pennsylvania 4-H Leadership Congress, and State 4-H Achievement Days.

She was winner of the 1980 Regional 4-H Fashion Revue.

"4-H has added encouragement to my activities. I think the greatest contribution has been the friends I've made from throughout the state," said Marla.

## Centre County



**Marla Wisley**  
Recreation

Marla Wisley, the daughter of Mr. and Mrs. Luther Wisley, was named recreation winner. She is a sophomore at the Smithfield, Ridgebury, Ulster High School, and has been a 4-H member for six years.

A member of the three Bradford 4-H Clubs, Marla served as vice president, secretary, news reporter, and teen leader.

The state recreation contest winner completed projects in bowling, sewing, crafts, snowmobiling, foods

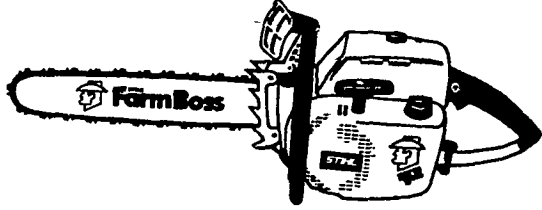


**Scott Cox**  
Bread Contest

Scott Cox, 16, 225 South Science Park Road, State College who was named state bread contest winner. The son of Mr. and Mrs. William A. Cox, he is a senior at the State College

(Turn to Page C20)

## WE HAVE THE FARM BOSS™ AND IT IS A STIHL.



- IT STARTS EASIER.**  
Because of a hotter spark better carburetion and a flood free design.
- IT'S MORE RELIABLE.**  
Because it has longer wearing moving parts that won't break down.
- IT'S MORE POWERFUL.**  
Because it has the biggest power to weight ratio of any popular saw.
- IT'S QUIETER.**  
Because its large, baffled muffler is more than just a tin box.
- IT COSTS LESS.**  
Because a saw that'll last about twice as long will only cost about half as much.
- IT COMES WITH A BONUS.**  
Over \$30 worth of free accessories including a spare cutting chain really make the Farm Boss a Stihl.

**STIHL**  
The world's largest selling chainsaw.

**FREE DEMONSTRATION**  
Chain Saw - Concrete & Metal Saw Rentals

**STOLTZFUS WOODWORK**

RD Gap, PA Box 183  
1 Mile North Rt. 897 From Gap

**WES STAUFFER SMALL ENGINES**

RD 3 Ephrata PA  
Phone (717) 738-4215  
Ephrata Exit New Rt 222  
1/2 Mile West on Rt 322  
Turn left onto Pleasant Valley Rd

**A & B SALES & SERVICE**

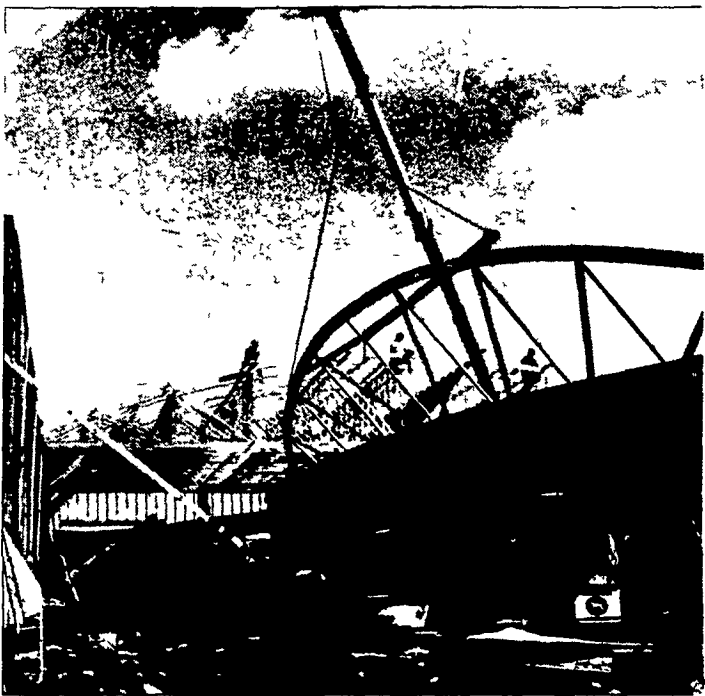
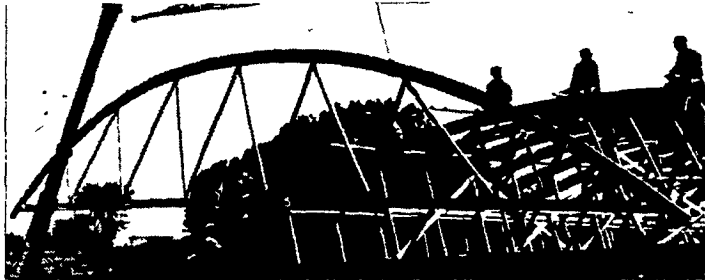
2 Miles South of Rt. 23 Along 772  
Thru Monterey - RD 1 Rorks, PA

**NORMAN H. ZIMMERMAN**

Myerstown, RD 2  
Phone (717) 866-4695  
1/2 mile west Myerstown West Main St

## THE TIE ARCH TRUSS

64x76 foot TRUCK GARAGE/Lebanon County



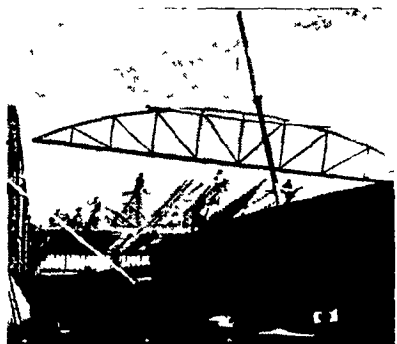
Nothing surpasses The Tie Arch Truss for bridging wide spans with a more easily handled truss that is at once straighter and stronger, with more uniform strength throughout. Available in lengths up to eighty feet with a splice-free laminated top chord and a minimum of bottom chord splices, all trusses are delivered in one section ready for economical installation at the job site.



Structural Imagination  
Engineered for Today's Large Building Needs

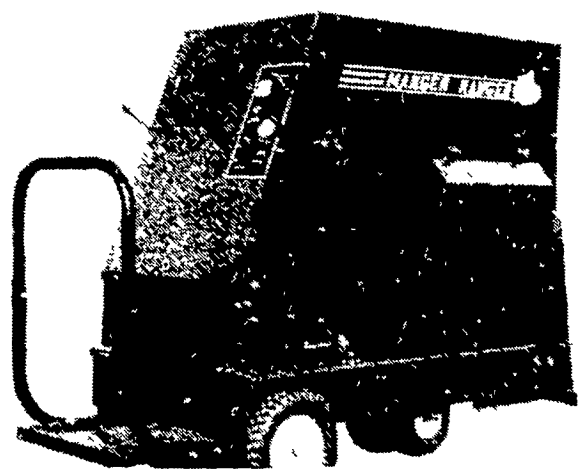
When strength, maximum span and easily-handled installation are combined...

80x400 foot POTATO STORAGE and PACKAGING BUILDING  
Schuylkill County



**OCTOBER SPECIAL - 15% DISCOUNT**

**Automate Barn Feeding, With a Manger Ranger!**



Battery powered Manger Ranger allows quiet, exhaust-free feeding of chopped hay, corn silage, haylage. Feed 25 cows in about 2 minutes. 28 bushel hopper holds 600 lbs haylage or 800 lbs corn silage. Discharge feed to either left or right side. Has 2 forward and 2 reverse speeds. Battery tray pulls out for easy servicing and re-charging. Recharge unit provided. Minimum alley width recommended 4'6". Automate your feeding for just pennies a day with a Clay Manger Ranger.



**15% DISCOUNT**  
**CLAY LIQUID MANURE ROW CROP INJECTOR**

AUTHORIZED CLAY EQUIPMENT DEALER

**CLYDE C. LUTZ**

Ephrata, PA 17522  
717-738-1718 or 733-1224