

FARM EQUIPMENT

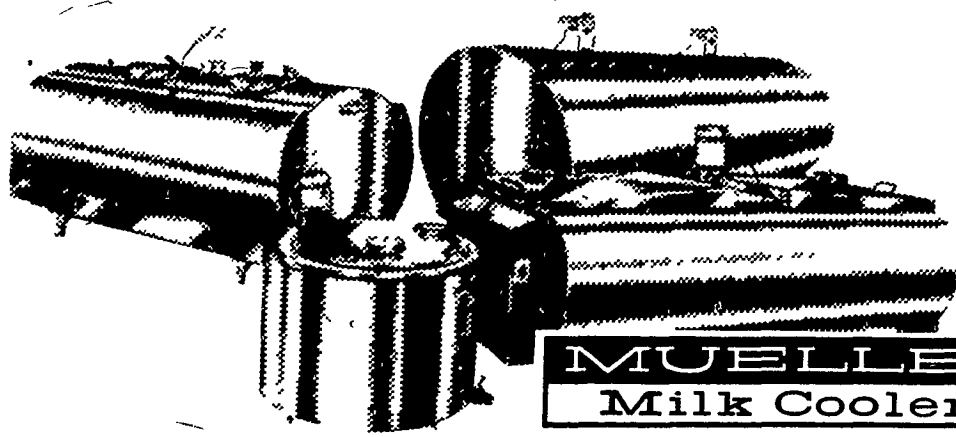
FARM EQUIPMENT

FARM EQUIPMENT

FARM EQUIPMENT

FARM EQUIPMENT

FARM EQUIPMENT



MUELLER
Milk Coolers®

For More Information, Contact your
Mueller Dealer
**SULT'S REFRIGERATION
SERVICE**

OFF RT. 340, 1 MILE EAST OF
INTERCOURSE ON HATVILLE RD.,
RD 1, GORDONVILLE, PA 17529

★ **24 HOUR SERVICE**
★ **PH: 717-768-8555**

Clip This Coupon And Mail To:
SULT'S REFRIGERATION SERVICE
RD 1, Gordonville, PA 17529

Send More Info.
 Have Representative Call

NAME _____
ADDRESS _____
CITY _____
STATE _____ ZIP _____
PHONE _____

CBS Modle "D-F" SLF
Chemixer, 5 ton liquid fer-
tilizer plant with oil fired
boiler and hot water
storage, pump and piping
system, 2 - 12,000 gal
vertical tanks and pump,
1,000 gal s s truck
mounted nurse tank and
350 IH tractor with fork
lift, 717-942-6122

COMBINE
JOHN DEERE 6600
with 15' Flex
Platform low hours
Low Equitity Payment,
take over financing
201-329-2765

**UNICORN
FARM SERVICE**
JAMES E. LANDIS

PATZ SALES & SERVICE
TERRE HILL SILOS
QUARRYVILLE, R.D.#2, 17566
CALL 786-4158

**MANUFACTURERS OF FARM
MATERIAL HANDLING EQUIPMENT**

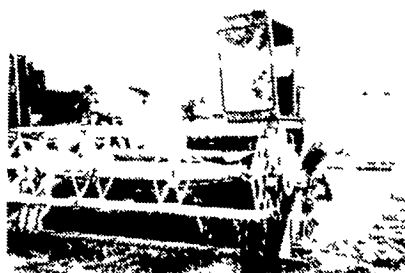
Gutter Cleaners
Manure Stackers
Manure Pumps
Manure Spreaders
Liquid-vators

Silo Unloaders
Cattle Feeders
Material Movers
Conveyors

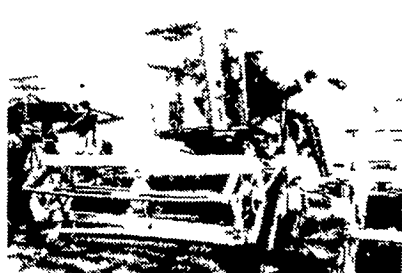


16 A flail chopper good
condition \$1400
New John Deere Model
143 Loader with 60"
hyd bucket Fits JD
utility trailers. \$1500
Used John Deere 3800
forage harvester, no
interest until May 1,
1981 wide or narrow
2 row head
John Deere 35 Harvester
w/1 or 2 row head
New John Deere Model
6500 Blower, \$1750
AC gleaner combine, mod
CII, diesel engine 4
row narrow corn hd.
12' platform good
cond. \$9,500
Interest Waiver Until
May 1981
AC Model E gleaner com-
bine 2 row wide corn
head, 10' platform
clean & nice \$4500
EDWARDS & COX
RD #1
Oxford, Pa. 19363
Phone 215-932-2929

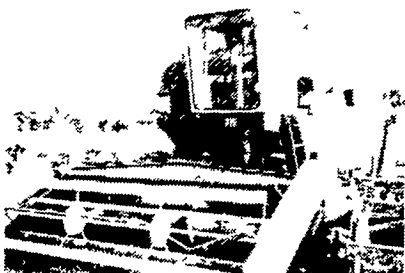
SUPER SPECIALS on COMBINES
GRAINHEADS INCLUDED WITH ALL COMBINES



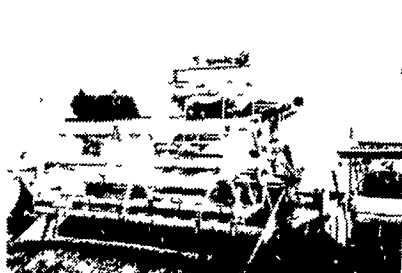
INT 203
\$1500
w/2x40 Corn
\$2000



JD 45
\$1500
w/2x40 Corn
\$1850



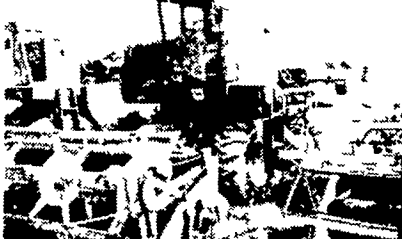
INT 715 Hydrostatic
\$6500
Available: (On Stock)
4x40 Corn, 4x30 Corn,
3x30 Corn, 2x40 Corn



JD 40
3 To Choose From
\$1000, \$1500, \$2000
w/2x40 Corn Add \$350



MF 300 Quick Tach
Very Nice **\$7800**
w/2x40 Corn **\$8800**
w/3x30 **\$9800**



JD 440
\$12,000
Available (On Stock):
2x40, 4x30, 4x40



GLEANER C II
\$3000
Available (On Stock):
4x40, 4x30, 6x30

**COMBINES ALSO
FOR SALE BUT
NOT PICTURED:**

GLEANER EIII **\$5900**
GLEANER K **\$6500**
MF 35 **\$1250**

**123 COMBINE CORN HEADS
IN STOCK**

IF WE DON'T HAVE ... WE CAN GET —
MAKE US AN OFFER

(2) JD 244 W	\$1750	AC C ^{II} 430N	\$2750
JD 443N	\$4500	(3) AC C ^{II} 440W	\$1000 to \$1500
JD 434W (105)	\$1000	AC GL440W (F)	\$2000
JD 434W (95)	\$1750	(2) AC C ^{II} 630N	\$2500
JD 434N (105)	\$1000	MF 322W (410)	\$1500
JD 435N (95)	\$1750	(2) MF 321N (410)	\$2250 to \$2750
(2) JD 334W	\$1500	MF 321N (300)	\$3000
JD 334W	\$1000	MF 43N	\$3500
JD 334N	\$1250	MF 44W	\$2750
(2) JD 313N (45)	\$1850	MF 63N	\$3000
(5) JD 234W	\$1350	MF 33N	\$2750
(45) \$500 to \$1000		(2) MF 24W	\$1800 to \$2300
JD 234W (95)	\$1350	(2) MF 222W (300)	\$1000 to \$1250
JD 210W (55)	\$650	MF 222W (82)	\$1000
(4) JD 205W	\$300 to \$950	(2) MF 22W (300)	\$400 to \$500
(40)	\$100	(2) MF 20W	\$150 to \$250
OL 531N	\$3500	MF 422W (510)	\$400
OL 531W	\$2750	IH 744	(403-715) \$2000
Case 404W	\$1200	(2) IH 429N (403-715)	\$1750 to \$2750
(1160)	\$1200	IH 327W (91 thru	315) \$2500
(2) Case	\$350 to \$750	(2) IH 327N (91 thru	315) \$1000 to \$1850
345W	\$350 to \$750	(3) IH 733N (403-715)	\$2250 to \$2750
NH 922W (975 -	\$1500	(3) IH 329N (403-715)	\$1500
985)	\$1500	(3) IH 429W (403-715)	\$1000 to \$2250
(2) MM H210	\$400 to \$700	(2) IH 743N (815)	\$2000 to \$3500
(OL 525)	\$400 to \$700	IH 743N (715)	\$3500
OL 512W	\$500	IH 724W (303-615)	\$1850
(3) OL 522W	\$1250 to \$1850	(3) IH 229W (403-715)	\$300 to \$1000
OL 703N	\$4000	(7) IH 227W (91 thru	315) \$300 to \$1200
(3) OL 544W	\$1750	IH 22W	\$250
OL 541N	\$2750	IH 25W	\$300
White 4x40	\$2750	IH 833N	\$3500
Long 4x40 (JD 4400 -	\$5500	IH 744 (915)	\$2000
6600 - 7700)	\$5500		
AC F330N	\$2500		
(2) AC A ^{III} 330N	\$1750 to \$2500		
(2) AC E ^{III} 240W	\$1500 to \$1750		
(2) AC E 240W	\$300 to \$1000		
(2) AC E240W	\$300 to \$1000		
AC FL330N	\$3000		
AC KL238	\$2250		

BACKHOES

Long 3 pt	
Hoe-new	\$4500
Long 5 in 1	
w/cab & crane	\$24,000
(2) JD 310	\$12,500
Ware Hoe	
Attach	\$3000
Ford 4500	
(1972)	\$6000

USED LOADERS

NI w/hyd bucket off	
77 Oliver	\$595
JD loader off JDA	\$395
Farmall loader	
off M	\$250
MM Loader	
no bucket	\$295
Oliver w/hyd bucket	
off 880	\$600
Int 2001	\$575
JD 36	\$575
Great Bend w/hyd	
bucket new	\$1750
Loader for super	
A 140	\$475
(2) Dunham	
new	\$1750

**MISC. MACHINERY
COMING IN**

Hesston 30 Stak
Mover

**OUR NEW YORK
STORE INVENTORY**

TRACTORS

Farmall 1066 - Red Cab - Air - 1975	\$10,750
Farmall 856 - Try - 2200 Hours - Nice	\$7500
With Axle Duals	\$8000
Farmall C w/2xPlow	\$1250
MF 1150 - Cab - Air - Nice	\$8500
JD 820 - Cab - New Paint	\$3800
AC - 5050 - 600 Hours - Very Nice	\$7750
Farmall 656 - Gas - WF - 3 Pt	\$3950
Case 585 Forklift - Diesel - 5000 lb - 14" Lift	\$13,500
AC HD6 Dozer	\$4500
Int 460 w/Loader	\$2750
Int 4186 - 600 Hours	
Cab - Air - 3 pt - PTO	
ROPS - Excellent	\$24,500
Int 6x18 Reset Plow	
For Above Tractor	
Excellent	\$5,500
Pair For	\$27,500
Farmall 806 - Cab	\$6750

MACHINERY

JD 1209 Haybine	\$2250
White Wing Disc - Like New	\$4250
NH 880 2x30 Cornhead - Weathered New	\$1850
(3) NH 717 Pickup Heads	From \$500 & Up
Dunham Cultipacker - Wide	\$595
5' 3 Pt Rotary Mowers - New	\$495
6' 3 Pt Scraper Blades - New	\$195
7' 3 Pt Scraper Blades - New	\$245
Cement Mixer - New	\$575
Gravity Bin - New	\$450
5 Ton Rawhide Wagon - New	\$395
8 Ton Rawhide Wagon - New w/Tele Tongue	\$550
10 Ton Rawhide Wagon - New w/Tele Tongue	\$595
12" Post Hole Digger - New	\$395
3 Pt Disc - New - 6'6"	\$495
3 Pt Boom Poles - New	\$60
4' 3 Pt Landscape Box - New	\$425
5'6" 3 Pt Landscape Box - New	1450
6' 3 Pt Landscape Box - New	\$475
7' 3 Pt Landscape Box - New	\$500
NH 467 Haybine - Nice	\$2500
NH 451 3 Pt Mower - 1 Yr Old - Excellent	\$1150
NH 770 Chopper w/2x30 and Late Style Pickup	\$4000
IH 400 Cycle Planter - 4 Row - Nice	\$2500
(2) Fox Hopper Blowers	\$695 & \$895
Ford 2 x 3 Pt Planter	\$250
Used 3 Pt Blade	\$225
Snow Plow (Ford)	\$300
MF 4X 3 Pt Plow	\$500
1974 Ford Louisville 8000 New 24' Jerr-Dan	
Rollback w/winch 225 Cat Diesel	\$18,750
MC 600 Dryer	\$2900

NEW YORK STORE

Located On Rt. 89,
11 miles South of Seneca Falls,
New York
Salesman: Leon Martin
Ph: 315-549-7140

SPECIAL
165 Bu. Gravity Bin
and 6 Lug Wagon
Gear - Brand New
\$795 For Pair

SPREADERS

(2) Int cub From	\$495
NH Tandem	\$2950
NI #18	\$875

**WENGER'S
INC.**

Myerstown, PA
717-866-2135

