

Old Timers Day

(Continued from Page A34)

it with the ease and speed its earlier operators would have been accustomed to doing.

Nevertheless, the large wooden rake, pulled by two "horses" — Harry Pardue and Otis Astle — gathered up in bunches or piles the straw spread out on the Grange grounds after the threshing demonstration.

Woodward described the rake as the oldest piece at the show that day.

In addition to the outside displays and demon-

strations, several exhibits were available for viewing inside the old stone Grange hall.

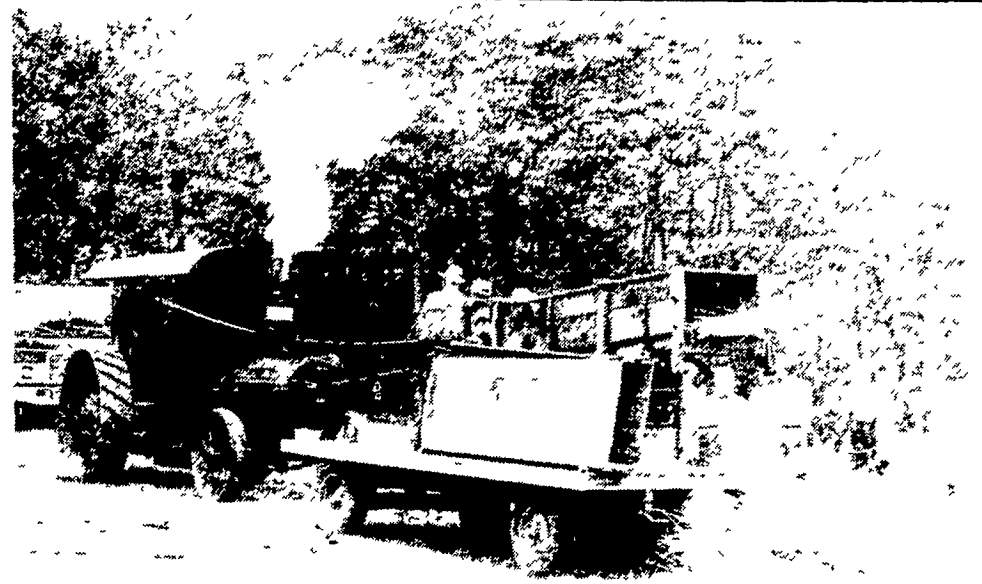
Rosemaling, macrame and tole painting by Sarah Stauffer, drumore; oil lamps from the collection of Jim and Vianna Hilton, Quarryville; old dishes, crocks, postcards and other memorabilia from Lewis Pyle's family collection were among the inside exhibits.

Also returning this year was the sizable display from Horace and Anna Wilson's

extensive collection of kitchen and household tools such as a churn, cherry seeders, apple peelers, meat grinders and cooking utensils. Dottie and Bob Kirstetter, Glen Moore, also displayed some of their household utensils.

Women of the Pomona once again had pieced and appliqued a quilt top and had a quilting bee in progress for those who wished to try their hand.

Homemade cakes, pies, soups and a bar-b-que supper were also available.



Nevin Myer's steam engine spent long hours threshing grain at the Chester-Delaware meet.

Garbage feeding rule passes house ag committee

WASHINGTON, D.C. — The U.S. House Agriculture Committee voted to approve a bill to prohibit the feeding of garbage to swine unless the garbage has been processed to destroy disease causing organisms.

The garbage feeding bill, HR 6593, has the support of the National Pork Producers Council. The NPPC is

working for speedy action by the House and hopes for passage of the bill before the November election recess.

According to the NPPC, processing of garbage before it is fed to hogs would reduce the possibility of spreading diseases like hog cholera and, of most concern, African Swine Fever.

ASF is spread through

scraps of meat from infected or carrier swine that get into garbage which is then fed to swine. It is essential that garbage be heated to a temperature high enough to kill the infecting organisms, since there is no known cure or vaccine for the disease.

With ASF in the Dominican Republic, Haiti and possibly Cuba, the traffic of refugees from these countries represents a real hazard, Orville K. Sweet, Executive Vice President of NPPC, said. ASF is not currently present in the U.S.

Some states have laws which prohibit feeding garbage, either processed or unprocessed, to swine. This bill does not preempt state laws which prohibit garbage feeding, but provides for the state and federal governments to cooperate in the enforcement of laws and regulations on ASF.

"We are gratified the House Ag Committee has taken steps to protect the U.S.

Md. & Va.

(Continued from Page A36)

consumers and congressmen to support dairy products" said Click.

"We also must be particularly careful with antibiotics in our milk," he said.

"We stand a big loss if we have to dump a milk silo tank because of antibiotics so we have got to have some way to work out situations where we find problems."

Click said "We do pride ourselves as selling the world's highest quality milk and we want to keep it that way."

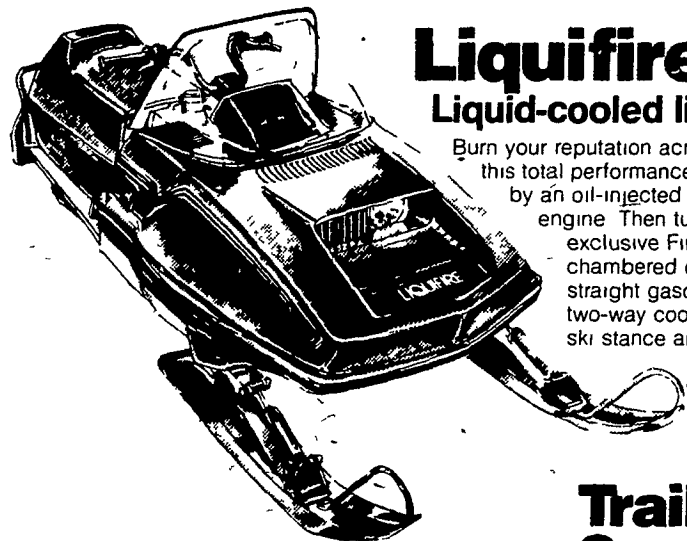
Click sees a pretty good picture as far as the Associations operations and allocations at the end of the year are concerned.

In closing Click said "we want to make sure that what we do is on behalf of the producers. We are here to serve you."

Other Association representatives in attendance were: James Reeder, director of field staff; Robert Rollins, public relations director; Gene Lauver, fieldman; and William Gilmore, fieldman.

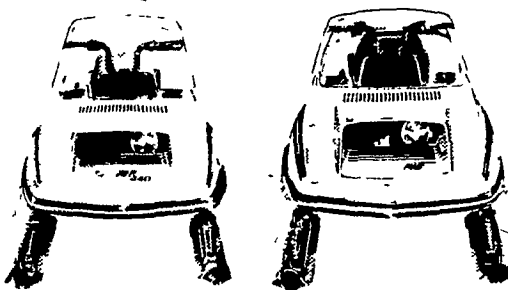


WITH A 1981 JOHN DEERE SNOWMOBILE.
SEE LIQUIFIRE • SPORTFIRE • TRAILFIRE • SPITFIRE TODAY



Liquifire[™] Liquid-cooled lightning

Burn your reputation across the snow on this total performance sled. It's powered by an oil-injected 440 Fireburst™ engine. Then tuned by an exclusive Firecharger™ chambered exhaust. Runs on straight gasoline. Has a two-way cooling system wide ski stance and long-travel slide-rail suspension.



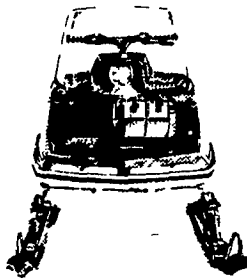
Trailfire[™], Sportfire[™] The trail blazers

Razzle-dazzle or a lot of comfort. Take your pick on Sportfire or Trailfire for 1981. Both are sleek, stable, agile. 340 or 440 Fireburst™ engine in Trailfire. 440 in Sportfire. With CDI slide-valve carbs, disc brakes and long-travel slide-rail suspension.

Spitfire[™]

The little spark with a lot of fire

Ever heard of body English? Talk to Spitfire about it. Whatever you say, this little 287-lb firecracker responds to — with zip, verve and great agility. Its direct-drive system eliminates parts and complexity. Has a 340 Fireburst™ free-air engine, butterfly carb, CDI and ski shocks.



Convenient financing available

1979 Spitfire

List \$1499.00 Sale **\$1299⁰⁰**

1979 340 Trailfire

List \$1899.00 Sale **\$1659⁰⁰**

1979 440 Trailfire

List \$2099.00 Sale **\$1819⁰⁰**

■ Prices Good till Oct. 4, 1980

■ Free Financing Available

REGISTER TO WIN \$25-\$50-\$75-\$150
GIFT CERTIFICATES FOR
SNOWMOBILE MERCHANDISE

1980 Trailfire 340

List \$2099.00 Sale **\$1859⁰⁰**

1980 Trailfire 440

List \$2349.00 Sale **\$2069⁰⁰**

1980 Sportfire

List \$2599.00 Sale **\$2279⁰⁰**

1980 Liquifire

List \$3199.00 Sale **\$2839⁰⁰**

VISIT OUR STORE
DURING THE
NEW HOLLAND FAIR
OCTOBER 1-4

ABC GROFF, INC. PAID

OUR TRUCKS ARE RADIO CONTROLLED



STORE HOURS

Mon., Tues., Wed 7-5
Thurs., Fri. 7-9
Sat 7-4

Since 1890
110 Railroad Ave
New Holland, PA 17557

Parts 717-354-4191
Sales 717-354-4731
Service 717-354-8004

OPEN THURSDAY & FRIDAY TILL 9 PM

BUCK TRACTOR PULLS

Top Pullers from Pennsylvania, Maryland, Delaware and New Jersey competing.

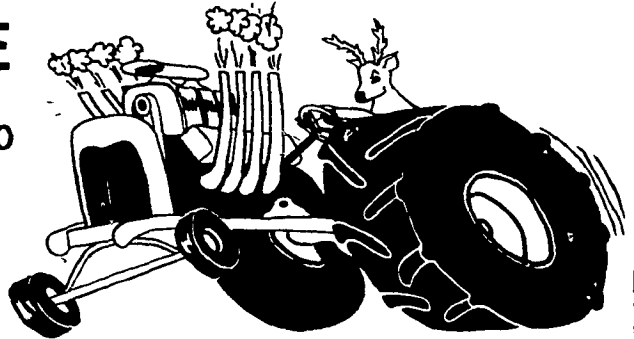
LAST PULL OF THE 1980 SEASON

Featuring...

THE TOP 10 POINTS LEADERS COMPETING
IN 9 CLASSES OF SUPER STOCK,
MODIFIED TRACTORS
AND 4-WHEEL DRIVE TRUCKS

BIG WHEEL RACE

Open To All
Children Ages 6 to 10
Enter at Office
by 6:15 P.M.
Starts at 6:30 P.M.



Regular Admission Prices
For This Special Event

Loc: 10 Miles south of Lancaster
on Rt. 272

LAST CHANCE TO SEE A TRACTOR
PULL FOR THIS SEASON

SEE YOU AT THE BUCK!