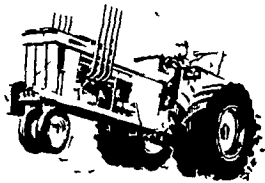


# Tractor Pull Tally



**Buck Tractor Pull**  
Sat., September 20  
5000 SS

1. Dale Smoker, Cochranville, PA AC 180 270.6; 2. Jim Brubaker, Quarryville, PA AC 180 264.8; 3. Bert Stauffer, Ephrata, PA Deutz 8006 240.2.

5000 Mod

1. William Almony, Wrightsville, PA 429 Ford 270.11; 2. Gary Mills, Fallston, MD 427 Chevy

252.10; 3. Jack Arecco, Hopewell, NJ 454 Chevy, 246.0.

7000 Super Stock

1. Coleman Wheatley, Bethel, DE JD 4240 259.5; 2. Dan Greenleaf, Martinsburg, PA JD 4010 258.8; 3. Bert Stauffer, Ephrata, PA Deutz 8006 240.2.

5000 FWD

1. Robert Smith, Winchester, VA 1970 Chevy, 299.4; 2. Mark Hardisty, Easton, MD 1973 Chevy

288.5; 3. Ronald Kauffman, Holtwood, PA Ford 277.8.

7000 Mod

1. Mike Hoff, Westminster, MD 484 Hemi, 295.10; 2. C & E. Pulling Team, Lebanon, PA 2-468 Chevy 294.5; 3. Gary Mills, Fallston, MD 427 Chevy 275.1.

9000 Super Stock

1. Tom Middleton, Ridgely, MD IH 966 251.3; 2. Coleman Wheatley, Bethel, DE JD 4240 250.5; 3. Harry Griest, Coatesville, PA IH

1456 246.10.

9000 Open

1. Mike Hoff, Westminster, MD CK 40-484 Hemi 290.2; 2. Ed Brensinger, Lebanon, PA Hmde/2-468 Chev. 288.8; 3. Bill Mead, Montrose, PA Chevys 264.10.

6500 FWD

1. Bob Smith, Winchester, VA 1970 Chevy, 287.11; 2. Michael Omms, Winchester, VA 1978 Ford 287.4; 3. John Adams, Holtwood, PA Ford 283.1.

*Dawny*  
for the Good Taste

## "The WELLINGTON 25"



### THE LATEST DESIGN IN COAL HEATERS

- \* American Made
- \* Cast Iron Fire Chamber w/25 Year Warranty
- \* Hopper Fed - 40 lb. Storage with 12 Hour Burn, Thermostatic Control
- \* 40,000 BTU
- \* 20 Ga. Embossed Steel Shroud Available in 5 Colors
- \* Solid Brass Trim
- \* Can Be Used As A Fireplace Insert

Orders Accepted Now - Stove in Stock For Your Inspection

## BOWMAN'S STOVE SHOP

R.D. 3, Napierville Road, Ephrata, Pa. 17522

Follow the signs from the light at Hinkletown  
Tues., Wed., Sat. 9-5; Thurs. & Fri. 9-9; Closed Monday



717-733-4973

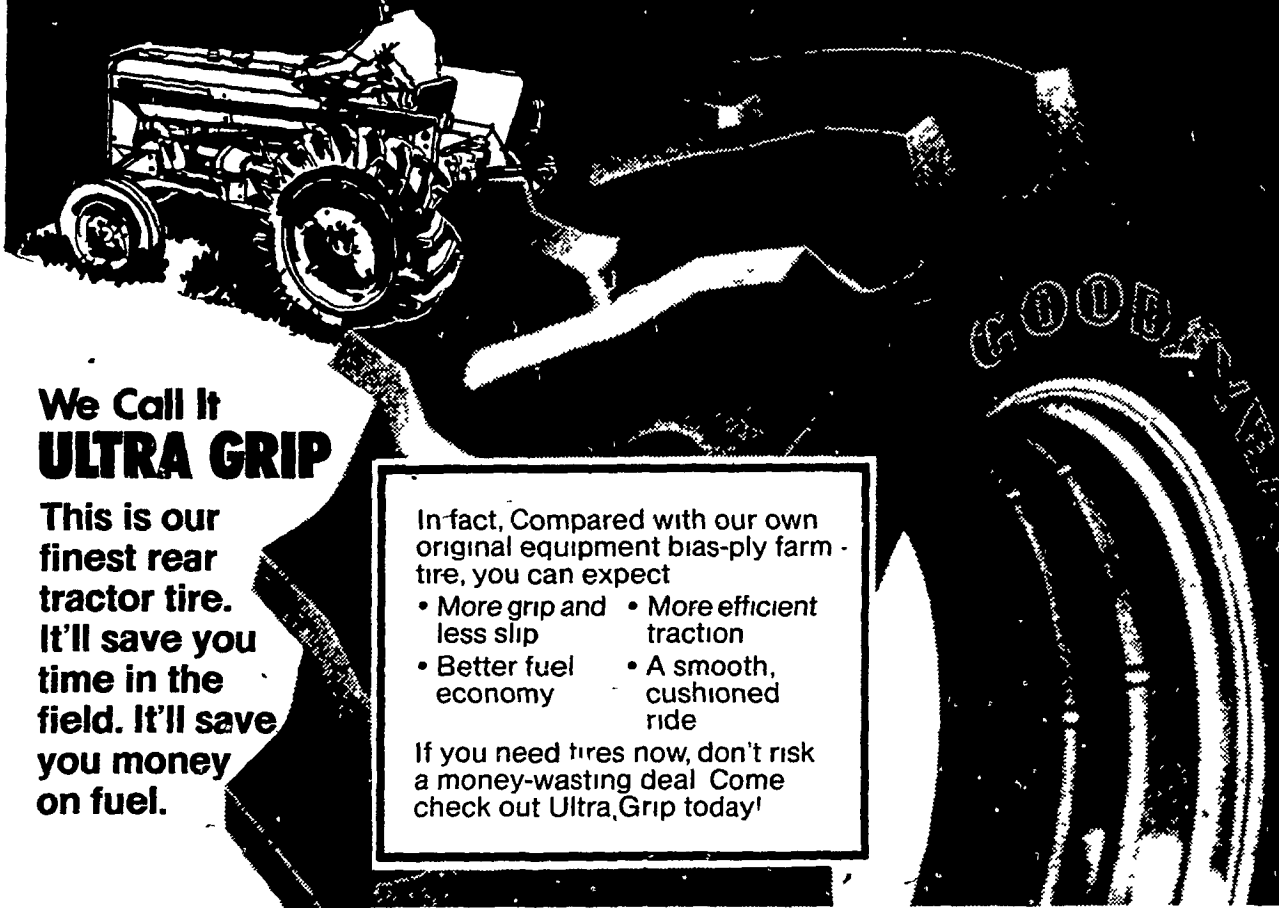
Financing Available



See Us At The  
NEW HOLLAND FAIR, Oct. 1-4

# GOODYEAR

## THIS RADIAL SAVES \$\$\$ AND MAKES SENSE!



### We Call It ULTRA GRIP

This is our finest rear tractor tire. It'll save you time in the field. It'll save you money on fuel.

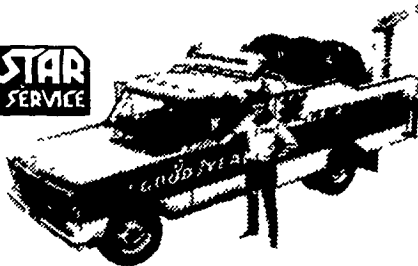
In fact, Compared with our own original equipment bias-ply farm-tire, you can expect

- More grip and less slip
- Better fuel economy
- More efficient traction
- A smooth, cushioned ride

If you need tires now, don't risk a money-wasting deal. Come check out Ultra Grip today!

### SEE YOUR IMPLEMENT DEALER FOR ON-THE-FARM SERVICE

When tire trouble strikes, it'll pay to have our number handy. We'll get you back on the job fast. With our tire shop on wheels, we fix flats, liquid-fill tires, handle on-the-spot replacement...do whatever it takes to get you going again. So even if your tires do let you down, we won't. Count on us!



# GOODYEAR

#### BUCK

Wenger Implement Co  
Ph 284-4141

#### ELM

Shotzberger's Farm Machinery  
Ph 665-2141

#### INTERCOURSE

C B Hooper & Son  
Ph 768-8231

#### LANCASTER

L H Brubaker, Inc  
Ph 397-5179

P Lebzelter & Son  
Ph 299-3794

#### MECHANICS GROVE

Grumelli Farm Service  
Ph 786-7318

#### MOUNTVILLE

R S Hollinger & Son  
Ph 285-4538

Goodyear Tires Distributed by P. Lebzelter & Son Co., Lancaster

## NOW - THINK FALL

**Alfalfa** - Topdress again after last cutting.

Available K aids in overwintering

**Alfalfa** - The BEST time for alfalfa weed control. Let our sales people book your alfalfa weed spraying NOW!

**Corn - 1981** - Start your plan now. Look to Organic for the following FALL SERVICES:

1. Soil Test
2. Fall Apply Limestone
3. Fall Apply P&K As Needed
4. Custom Chisel Plowing With Anhydrous Ammonia (Cold Flo) And N-Serve (Nit-Stabilizer)
5. Buy PRAIRIE STREAM CORN

Call Us Now! We Are Your Most Complete Full Service Dealer



**ORGANIC PLANT FOOD CO.**

2313 NORMAN ROAD,  
LANCASTER, PA. 17601  
PHONE: 717-397-5152