

Ephrata fair receives \$2500 boost

EPHRATA — The Ephrata Fair Thursday received a check for \$2,551.67 in matching funds from the Pennsylvania Department of Agriculture's Fair Fund in ceremonies on the fairgrounds in Ephrata.

The \$2,551.67 check, for purchase of a trailer for the fair office, was presented by Deputy Pennsylvania Agriculture Secretary E. Chester Heim. The funds were made available through a special allocation of the Pennsylvania State Fair Fund aimed at promoting capital improvements at fairs within the commonwealth.

State Representative Noah W. Wenger, of Stevens, vice-chairman of the House Committee on Agriculture and Rural Affairs, took part in the presentation ceremonies, along with Ben F. Mader, Director of the Pennsylvania Fair Fund.

The Pennsylvania State Fair Fund is supported by returns from horse and harness racing revenues. In addition to the matching

Grassland FFA

runs nature center at Fair

EPHRATA — Members of the Grassland FFA from Eastern Lancaster County School District operated a nature center open to the public during the Ephrata Fair.

The project grew out of the Grassland FFA's Building Our American Communities program.

Included in the nature center were a number of educational displays on such topics as birds of prey, working together for wildlife, waterfowl, and the conservation mini-window exhibit competition.

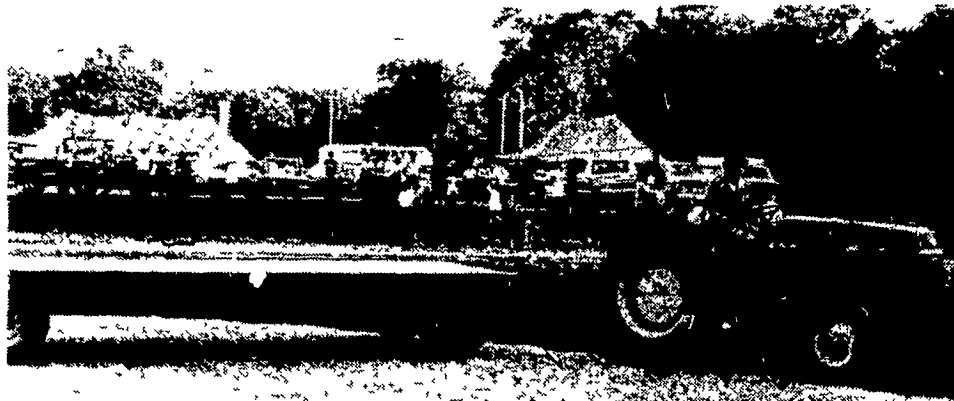
Also featured was a touch and feel table to stimulate the use of the sense of touch to enjoy many natural tidbits. A guess box was one of the highlights for the youngsters.

In addition, members of the Grassland FFA presented a series of talks and demonstrations for the public.

This project was developed by the Grassland FFA as a community service.

funds program, another \$1.9 million was distributed to the 105 fairs in Pennsylvania to cover costs of events, exhibitions and premiums for 1979.

Including Thursday's matching funds check, the Ephrata Fair has received a total of \$15,546.67 from the Fair Fund this year.



Daryl Martin, Ephrata, took first place in the adult tractor driving contest held Tuesday. He is shown here backing a wagon into a stall.

BARN PAINTING
 Call Us Now
 For Free
 Estimates
PHARES S. HURST
 RD 1, Box 420
 Narvon, Pa 17555
 215-445-6186
BRUNING Paint Company

\$3.79 Per Gal
Conoco
Permanent
Antifreeze

\$3.64 Per Gal
Conoco
Permanent
Antifreeze
 (In 55 Gal. Drum Only)

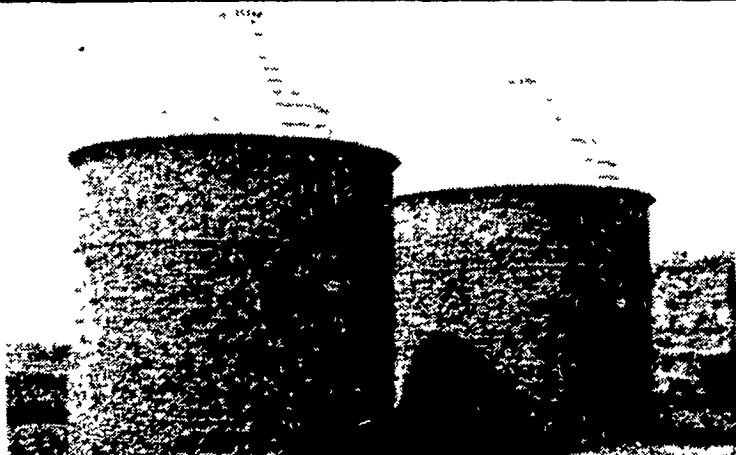
EMHERR

EQUIPMENT, INC.

FARM & HOME SUPPLY

★ SALES — SERVICE — PARTS ★

BEHLEN CORN CRIB CLEARANCE



MODEL	DIAMETER	OVERALL HEIGHT	BU.	PRICE
FXL-15	12'8"	21'	865	\$739 ⁰⁰
EL-10	16'6"	18'	1085	\$799 ⁰⁰
EXL-15	16'6"	23'	1515	\$979 ⁰⁰

Limited Stock On Hand

WOVEN FENCING

Height	Stay Space	Filler Gauge	Reg. Price	SALE PRICE
39"	12	12½	\$59.99	\$54.99
47"	12	12½	\$66.99	\$60.99
47"	12	11	\$89.99	\$81.99

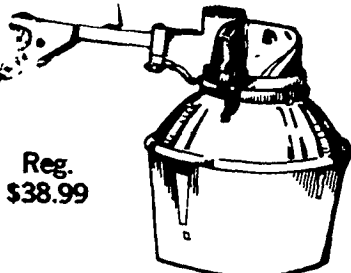
FIELD DRAIN PIPE

4" Solid or Perforated **23¢** /Ft.
 6" Solid or Perforated **56¢** /Ft.

DUSK TO DAWN SECURITY LIGHT

\$33.95

- NOW
- Fully Automatic
 - 120 Volt
 - Easy to Install Anywhere
 - Economical
 - Mercury Vapor Bulk



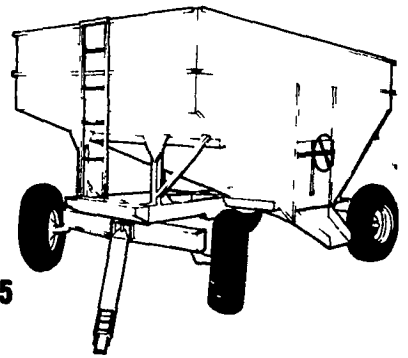
Reg. \$38.99

KORY GRAVITY BOX

- Model S-165
- Sills - 7 ga. • 165 Bu.
 - 970 lbs. • Heavy Duty
 - 60" Height

Reg. Price \$459.95

Special Price **\$429⁹⁵**
 Less: Wagon & Tires



RUNNING GEAR

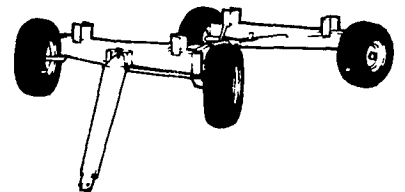
- Adj. Tongue
- Adj. Wheel Base
- 6 Bolt Hubs

10 Ton - Reg. Price \$549.95

Special Price **\$489⁹⁵**

8 Ton - Reg. Price \$449.95

Special Price **\$399⁹⁵**



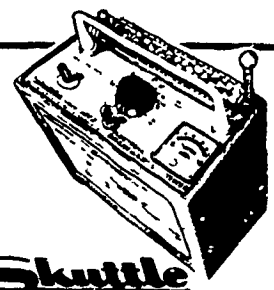
T POSTS

5' **\$1.99**

5'6" **\$2.29**

6' **\$2.49**

Limited Stock On Hand



Skuttle MOISTURE TESTER

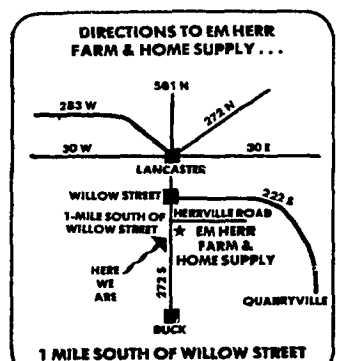
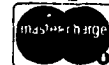
- 2 year warranty
- Will test grain sample in 1 minute
- Compact, weighs less than 5 lbs (less battery)

\$69⁵⁰

R.D. 1 RTE 272 SOUTH,
 HERRVILLE RD.
 WILLOW STREET, PA
 Phone: (717) 464-3321

Store Hours:

Mon.-Thur. 7:30 A.M.-6:00 P.M.
 Sat. 7:30 A.M.-5:00 P.M.
 Fri. 7:30-9:00



Let Us Know Your Service Problems
HOOVER DIESEL SERVICE
 PH: 717-656-6133
 2998 West Newport Rd.
 Ronks, PA 17572