

## Berks County 4-H'ers prepare for show



Fred and Lisa Bube, Robesonia, work at setting up their twin Hampshire lambs. The Berks County Lamb Show and roundup will be held October 1 at 2:30 at the Leesport Market and Auction, Leesport. Fred, 11, attends the sixth grade and Lisa, 16, is in the 12th grade at Conrad Weiser School District.



Greg Strickler, 12, Bernville R2, works with his Angus X Limosine Steer in preparation for the annual Berks County 4-H Lamb and Market Steer round-up to be held November 5 at the Leesport Market Auction, Leesport, beginning at 4.

### Now Is The Time

(Continued from Page A10)

time. When storing spray materials, always keep them in their original containers and away from all children, pets, and livestock. It is best to have a separate room or building for pesticide storage. Wettable powders are easy to store; however, emulsions and liquids may be harmed by freezing weather. Producers are urged to follow the label and instructions in this respect. It might be necessary to keep some of them in a heated building. Be sure they are not near feed supplies because accidents can happen. Pesticides kept in a room or building under

lock and key is a good way to prevent costly mistakes and tragedies.

#### TO CHECK 1980 WEED CONTROL

If you did not get good weed control this year in your fields, now would be a good time to investigate. As we travel throughout Lancaster county, we note quite a variation in the weed control success. Some fields are nearly weed-free, while others are quite weedy. This can be observed after the crops have been harvested. If the weed control program is being done by a custom operator, then that person should be with you to observe the conditions and

to make plans for next year. In addition to materials, timing, and weather, please keep in mind that soil acidity has a definite part to play in good herbicide performance. In sour soils most of our weed killers will not do a good job. Take time now to observe your weed control program.



### Junior Suffolk Assn. to sponsor lamb raffle

HARRISBURG — The Pennsylvania Junior Suffolk Sheep Association has a lot of activity scheduled for the Keystone International Livestock Exposition.

The JSSA will sponsor the Suffolk Booth at the show and they will be selling raffle tickets on a registered Suffolk ewe lamb.

The raffle will take place

just before the Pennsylvania Suffolk Sale at 6 p.m. on Saturday, October 4, 1980 in the sheep arena.

The Junior Suffolk Sheep Association will be holding their Pennsylvania Suffolk Queen contest the same day. Any interested young ladies who are members of the Junior Association should contact Mrs. William MacCauley at 215-593-6521.

**Stone Damaged WINDSHIELDS REPAIRED!**

- Optically clear and strength restored
- Fraction of the cost of replacement

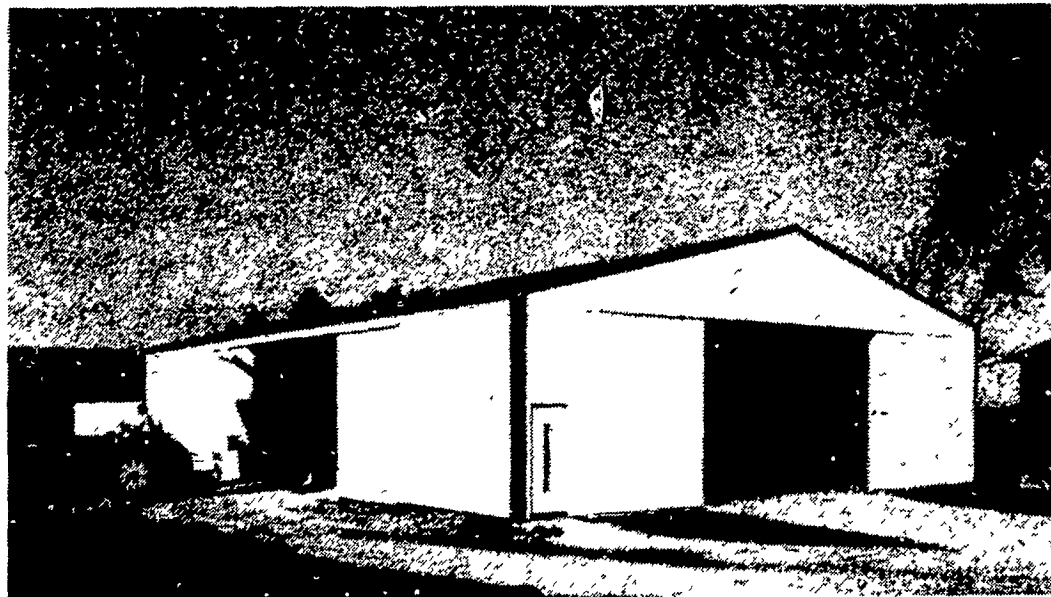
Call your NOVUS METHODman™ at our location  
**215-376-9772**

**SHAPPELL/NOVUS**  
Div. of Shappell, Inc.  
1141 Penn Ave. (Rear)  
Wyomissing, PA 19610

## Introductory Building Special

# - ONE DAY ONLY - FRIDAY, OCTOBER 3, 1980

Hours 9 - 5 At Wickes Lumber Store  
Rt. 272 and Garden Spot Road, Ephrata, PA



### 42' x 80' MACHINERY BUILDING

with

- 1 - 20'x14' Sliding Split End Wall Door
- 1 - 16'x13' Sliding Solid Side Wall Door
- 1 - 3068 Walk Door - All Glass
- 6 - Roof Skylighter approx. 3'x12'

All painted 29 gauge Galvanized Steel Roof & Sides with Complete Trim and Hardware package.

# \$8999<sup>00</sup>

plus tax

All Material F.O.B. Ephrata, PA

Delivery must be taken by  
December 1, 1980

We have a skilled crew available  
for erection if desired.

Call or Write To Us  
Rt. 272 & Garden Spot Road  
Ephrata, PA 17522

717-733-6521  
717-394-9325

OR  
**MERVIN MILLER — 717-626-5204**

## WICKES LUMBER