

Public Sales Register

Closing Date - Monday, 5:00 P.M.
of each week's publication

SAT. OCT 18 - 2.00 P.M. Public Sale of 5 acre farmette, located along Millway Rd., 1 mile west of Akron, PA. Owner Charles R. and Gloria A. Martin. Nevin Z. Martin and Lewis B. Groff Auctioneers

SAT. OCT 18 - 10.00 A.M. Located on the premises in Centre Twp. Berks Co., PA Rt. 183 to Bern Church, north on Plum Creek Rd., 3/2 miles to Spohn Farm. Mr. & Mrs. David Spohn Owners. Faust Ker-shner Auctioneers.

SAT OCT 18 - 12.00 P.M. 55th Eastern Breeders Sale of 35 top Brown Swiss Held at the Fairgrounds, Cobleskill, NY Tom Whittaker Auctioneer.

SAT. OCT 18 - 9.00 A.M. Public Sale of Antiques, Collectibles and Household Items. Located 138 West Broad Street, Elizabethtown, PA Lois Welker Owner. Dockey & Dockey Auctioneers.

SAT OCT 18 - 10.00 A.M. Public Sale of Farm Machinery, Real Estate, 2 Large farms set up for dairying will be offered at 12.00 noon Located in Huntingdon Co., 2 miles north of Water Street, or 8 miles south of Tyrone, PA along Rt 453, formerly known as the Grover Murray Farm Francis Litton Rd 1 Alexandria, PA Owner Mark Glick Auctioneer

SAT OCT 18 10 A.M. - Annual Fall Heifer Sale at New Holland Sales Stables

MON OCT 20 - 9 30 A.M. Consignment Sale Located at S Race St., Myerstown Pa 17067 Sale held by Wengers Farm Machinery, Inc

MON OCT 20 - 7 00 P.M. Public Sale of 22 acre farm, located along Highville Rd., Rd 2, Conestoga, Manor Twp, Lancaster Co., PA 1/4 mile east of Highville Fire Co. Sale by Mr & Mrs Norman B Bleacher Howard Shaub and Roy C Probst Auctioneers

TUES OCT 21 - Yearling Steers sell at Narrows Livestock Auction Market, Inc., Narrows, VA

TUES. OCT. 21 - 9 A.M. Sale of Household Goods, Tools, Antiques & Some Farm Equipment Located on Noble Rd near Kirkwood. Owner John A Lapp Carl & John Diller Auctioneers

OCT 24 & 25 - Sale of Railroad Antiques, Held at Red Caboose Lodge, Strasburg Ron Funk Auctioneer

FRI. OCT 24 - 12 30 P.M. Dispersal of Dairy Herd, 45 head (31 Holstein, 14 Registered Brown Swiss) Milking Supplies, Located 20 miles east of Lancaster, PA, 2 miles west of Rt. 10 & 340, 1 mile east of Whitehorse, turn off Rt 340 on Plank Rd., third farm on left Terms by R. Guy Wannier Auctioneer Robert E Martin and Son, 656-7770 and Frank L Steller

SAT. OCT. 25 - 11 A.M. Consignment Horse Sale at the Keister's Middleburg Auction Sales, Inc., Rt 522, 3 miles East of Middleburg, 5 miles West of Selinsgrove, Pa Don & Walt Keister, Owners Ray Long & Dave Imes Auctioneers

SAT OCT 25 - 10 00 A.M. Public Sale of Antiques, Tools and Household, Estate of Walter J Miller, Rd 2, Airville, PA Anna Mary Miler Owner Robert L Sechrist Auctioneer

SAT OCT 25 - 9 00 A.M. Public Sale of Real Estate, Fine Antiques, Household Goods, Mechanical Banks, Brass and Iron Articles Located along Main St., Village of Conestoga, Conestoga Twp, Lancaster Co PA Sale by Paul C Trissler Estate Howard Shaub and Roy C Probst Auctioneers

SAT OCT 25 - 10 00 A.M. Public Sale of Farm Equip-

ment, Antiques & Collectibles and Personal Property Located in the Village of Fearnot, Hubley Twp, Schuylkill Co 2 miles west of Sacramento and Rt 25, 22 miles west of Pottsville, 45 miles NE of Harrisburg, PA Alvin A Herner Owner George and Mike Deibert Auctioneers

SAT OCT 25 - 10 00 A.M. Public Sale of 15 acre farm, Farm Equipment, Household Goods and Antiques Located South of Martindale, Lancaster Co, Terms by Mrs Clayton Zimmerman Auctioneers Paul W. Horst and Lamar Senseng

SUN OCT. 26 - 9 00 - 4 00 Red Caboose Railroadiana and Toy Train Show & Sale Lancaster, PA Held at the Guernsey Sales Pavilion, Rt 30 & 896, 5 miles east of Lancaster, PA Ron Funk Manager.

WED. OCT 29 - Show 9 00 A.M. Sale 12 00 P.M. Annual Dairy Show and Sale held at the New Holland Sales Stables, New Holland, PA

WED OCT 29 - Annual Dairy Show and Sale at the New Holland Sales Stables, Inc., 12 miles East of Lancaster, Pa just off Rt. 23 Show at 9 A.M. and show cows to sell at 12 Noon.

**SECOND ANNUAL
P.P.H.C.
PAINT HORSE SALE
SAT., OCT. 4, 1980**
Harrisburg, Pa.
(During the Keystone
International Livestock
Exposition)
For Information &
Consignment Forms
Write or Call
215-249-9345
**Windy Meadows
Farm**
1904 Broad St
Perkasie, Pa 18944

WED. OCT. 29 - Annual Cow Show and Sale, Judging at 9 A.M., Sale 12 Noon at New Holland Sales Stables

WED OCT 29 - 7 00 P.M. Feeder Sale at Four States', Hagerstown, MD

FRI. OCT. 31 - Clean-up sale, all kind of cattle (900 head). South Branch Stockyards, Inc., Moorefield, WV



Special Holstein Cow Sale

TUESDAY, SEPTEMBER 30
8 P.M. D.S.T.

To be held at Smoketown Quality Dairy Sales Co., Rt. 340, Smoketown, PA. 5 miles East of Lancaster & 5 miles West of Intercourse.

Two loads of Reg. & Grade cows and heifers out of New England States, Canada. Special mention of Reg. cows, heifers & bulls.

Reg. born 12-12-76 Willow-Farm Rockman Ivanhoe with a heifer calf by Milbrofar Elate Magician.

Reg. Wallcomsac Royal Aaron, with a heifer calf by Junell Ivan M Layton. Reg. born 7-21-76 Chapel Bank Worthy Spangler bred to Chue Farm Ludge Sunset. 2 yr. 2m. 287d 15,220m 3.6 442.

Reg. born 5-10-77 Cobble Farm Kilian. Dam's records - 2 over 17,000 - and 3 over 18,000. Up to 688 F.

Reg. born 12-19-74 - G.P. 82 - Jalco Gary. As 2 yr. old - 13,980m. 3.8 538F. Dams record over 16,000.

Reg. born 8-24-75 - Lemax Fury Tremor - G.P. 82. As 3 yr. over 12,000.

Reg. born 7-25-76 - Life-O-Riley Marquis King - G.P. 82. Bred to Country Home Astro King. 2 yr. 2m - 12,240 - Dams records from 14,000 to 16,000.

Reg. born 4-30-75 Sir Bergtor HF Andy Sam.

Reg. born 9-25-76 Jo-Shar-Da original Kenco.

Reg. born 9-28-76 - Tunkhannock Elevation.

Reg. born 1-5-73 - Stonetown Citation Gordon.

Grade heifer 2 yr. old just fresh - Vacc. - Sire Elevation son. Dams records - 3 yr. 305 12,000 4.0T; 4 yr. 305 15,100 3.9 T. Projected over 16,000-3.8T.

Reg. Bull, ready for service. Sire Mar-Clem-Bootmaker-Clem. Dam Penn-Octo-Kenny VG 86 pt. Dam's Records 2 yrs., 365d, 22,325M, 3.7T, 816F, 3 yrs. 9 mos. 365d, 30,020M, 4.0%, 1200F.

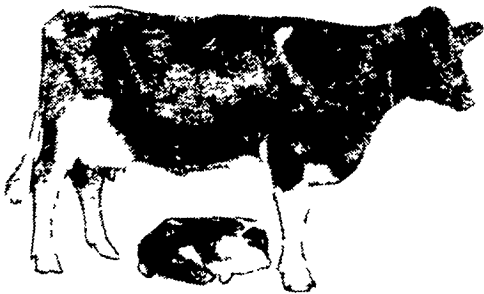
Reg. Bull - born 6-29-79 Diamond-Spietze Standout. Dams record - 305d. 14,310; 2 yr. 11m. 337-15,600. Granddam records 2-yr. 8 m. 14,000 - 4.0T to 7 yr. 1 m. - 18,110m. 4.1T.

Sale by
GORDON W. FRITZ
717-393-0930

Cows milked at regular time. Cash or good check night of sale.

Paul Snyder
Carl Diller, Auctioneers
Henry Kettering, Pedigrees

Lunch - Bird-in-Hand Auxiliary



SHADY LANE DAIRY SALES, INC.

Announces a new service
to the new breed of businessmen farmer.
TOTAL HERD LEASING

How it works:

You select the stock or herd from our inventory
You take the cattle home and let them pay for themselves plus giving you additional cash as well as the offspring
You are not bound by a set price per head as with conventional lending. Rather the quality sets the price

Here is an opportunity to acquire Registered and grade dairy cows carrying valuable calves without putting a large down payment down. Letting you use that money elsewhere to avoid high interest rates.

If you are looking for a hedge against inflation - Your set payments are made with tomorrows escalated dollars and income.

If you're looking for tax advantages - The rental payments are a direct deduction from your earned income and You may be eligible for investment tax credit.

Nothing is free in life, but for the qualified man willing to go to work, here's a way to avoid the fluctuating high interest rates you have been paying.

Lease agreements tailored for your special needs.

For more information contact us soon.

Shady Lane Dairy Sales, Inc.

- ★ Complete herd dispersals in our sales complex
- ★ Complete Sales Service
- ★ Top individual registered & grade on auction
- ★ Dairy private sales of individuals or herds
- ★ Total leasing for qualified dairymen.

5 GENERATIONS of experience and service striving to meet the needs of tomorrow's dairymen.

Owners
Glenn D. Fite
717-786-2750

David L. Fite
717-786-1725

SHADY LANE DAIRY SALES, INC.

Rd. #4 Box 463
Quarryville, Pa. 17566