

## 55th RENEWAL GUERNSEY SALE OCTOBER 9

At the Guernsey Sale Pavilion in Lancaster, Pa.  
Rankin Farms Golden Brown (89) - Reserved Jr. All American 1979, GRAND CHAMPION PA FARM SHOW 1980, TOP OF 1979 54th RENEWAL GUERNSEY SALE AT \$7500. Due at sale time to T.D. Rocky. If heifer calf is born, it will also be sold.

**JERRY BERNSTEIN**  
Box 10  
Davidsonville, MD 21035

## PUBLIC AUCTION LANDSCAPE EQUIPMENT WED. EVE., OCTOBER 15 7:00

To be held at the Lebanon Area Fairgrounds, corner of Cornwall and Evergreen Rds., southeast of Lebanon, 1/2 mile east of the Rocherty-Rt. 72 intersection.

**JOHN DEERE 1520  
GAS TRACTOR with 48 LOADER**  
1108 hours - diff. lock  
remote control foot throttle  
to be offered separately  
and as complete unit

6' BRILLION 3 pt. seeder (like new - used approx. 6 times); BANTON Sodmaster sod cutter - 12" - 4.5 HP engine; 6" OLSEN grading box with board float; 8' York rake with gauge wheels and grader blade; 14 HP HOWARD 3 speed rotavator and GMC 1973 truck with crew cab and chassis - no box.

**1976 FORD F350  
DUMP TRUCK**

42000 miles - licensed at 11000  
4 speed - new Michelin rear rubber

Note: This is not a going out of business sale, we are just selling some of our surplus equipment. Items can be inspected after 10:00 AM on sale day.

Terms: Cash or approved check. Phone sale day 274-9953. Few small items - be prompt

Conditions by  
**ROBERT A. SCHAEFFER**

Harry H. Bachman,  
Auctioneer 717-867-1809



## PUBLIC AUCTION VALUABLE 5.7 ACRES OF REAL ESTATE

(Approx. 5 ac. zoned commercial, balance residential)

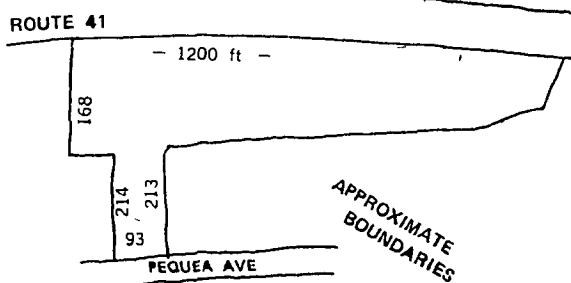
**SATURDAY, OCTOBER 25**  
at 2:00 P.M.

Located on the west side of Rt. 41, just 400 yds. south of the intersection of Rts. 30 & 41 in Gap, Pa.

Real Estate consists of approx. 5.7 acres of ground with approx. 1200 ft. frontage on Rt. 41 and approx. 93 ft. frontage on Pequea Ave. in Gap. Property also includes a small stream in the southeast corner.

Sale By:  
**JAMES & MARGARET KLONARIS**

Attorney:  
Samuel Musser  
Auctioneers:  
Ira Stoltzfus & Son  
(717) 442-4936 - 442-8254  
Jay Leary 354-0423



Inspection by appointment. Call (215) 593-6793.  
Terms: 10% down with balance at settlement.  
Note: Sale to be held on Pequea Ave. near Gap Fire Hall.

Not Responsible for Accidents  
"List Your Sale Today - - With Ira, Dale, or Jay"

# Grain marketing strategy for drought

NEWARK, Del. — Local farmers have been wondering how to adjust their grain marketing strategy in light of this summer's severe drought, which has affected soybean as well as corn yields.

As of September 1, the prediction is for the state's corn harvest to be around 12.036 million bushels — down nearly 30 percent from last year's bumper crop of 17.034 million bushels. Soybeans, at an estimated 7 020 million bushels, are expected to be down 12 percent from last year.

Growers should have taken advantage of good grain prices this summer by forward pricing part of their crop, says University of Delaware extension crops

marketing specialist Carl German.

They should now be making cash sales at harvest, have met any storage needs, and be planning ahead for marketing their 1981 crop.

By now the reason for caution in deciding how much of an anticipated crop to forward contract should be apparent. Growers who over-committed themselves in forward sales to delivery grain this fall before making sure of their yield may find themselves in a tight spot. But opportunities still exist for selling what you did produce at a good price.

A good rule of thumb is to sell at harvest during a short crop year and store at harvest during a huge one,

says German. Considering the situation locally, it would be very wise to sell at least enough of your grain at harvest this year to meet operating costs and other major financial commitments.

Because of the extent of the drought, further price gains may be forthcoming. But now that harvest is in full swing in the Midwest, analysts expect to see futures prices for November and December delivery level off or actually decline in the near term.

The national outlook is for a 6.5 billion bushel corn crop — still quite good, though somewhat down from last year's bumper yield.

Looking ahead to your 1981 crop, observers feel that hedgers would be wise to consider making initial sales at the \$3.75 level for December corn and \$8.90 and \$9 for November soybeans.

Hedging programs seemed to work well for corn producers this season, says German.



## GUN AUCTION WEDNESDAY, OCTOBER 8, 1980 1:00 P.M.

Located at "Lykens Valley Shop & Play Hall",  
Route 209, Lykens, Pennsylvania, approximately 40 miles north of Harrisburg.

### HAND GUNS

Persian Luger Made by Mauser, 1937, All Persian Script (Exact Gun Pictured in Luger's At Random Book), Walther Model PP; Colt Military Officer's 1902; Jap Papa Nambo Auto 8 mm. All Matched Numbers; Browning High Power Bi-Centennial Model with Matching Jade Knife and Model 92 Lever Action Rifle (New); Colt Auto. Grip Safety U.S. 32 Cal., Parkerized Finish (Gun belonged to General Stackpole of Harrisburg, Pa. with letter of authenticity from grandson); Carl Walther Mod. PP Sport; H.S. Crusader Cal. 44 Magnum; Walther P38, 9mm; Browning Sig-Sauer System Mod. DBA; Colt WWII Comm. Pacific Theater; Mauser Mod. HSC, American Eagle Edition; Browning 9mm Kurz Auto. with Grip Safety; Colt Government Mod. Mark IV, Series 7D; Colt 25 Auto. Grip Safety; Mauser Auto. Model HSC; 45 Government Mod. 1911 Made by Remington Rand; Jap Nambo Mod. 14, Made August 1943; P38 SVW45 French Manufacture; Astra 25 Auto.; Valor 25 Auto.; J.P. Sauer & Sohn 25 Cal.; German Made 25 Auto. Marked York Cultery Co., York, Pa.; Colt 25 Cal. Auto. Pocket Model Grip Safety; Bauer 25 Cal. Auto.; Mauser Banner 7.65mm; Walther Mod. 9 with Etching; Walther Mod. 8, Mod. 3 and Mod. 5; Browning Baby Pocket Model; Bayard Marked Depose; Astra Pocket Model; Mauser Banner Commemorative; Mann Made in Germany; Others Too Numerous To List.

THE MAJORITY OF THESE AUTOMATICS ARE NEW OR IN LIKE-NEW CONDITION.

### LONG RIFLES

M1 Grand Made by H&R Arms Co. (unfired); M1 Grand Mfd. by International Harvester (unfired); M1 Mfd. by Saginaw; Ruger Mini 14 (new); Antonio Zoli-Gardone 12 Ga. Over & Under; Weatherby Regency Trap Gun 12 Ga. Over & Under; Weatherby Mark V, Left Handed, Made in Germany, 300 Magnum, with Variable Leopard Scope (select wood, highly engraved in gold); ANTIQUE BLACK POWDER JOHN SCHULER, PERRY COUNTY, PENNSYLVANIA, OVER & UNDER, CAP & BALL (MINT); Hamilton Mod. 15; 1817 Springfield Cap & Ball with Bayonet; Savage Mod. 19; Savage Mod. 99; Stevens Favorite Mod 71; Savage Mod. 99 Take Down Model with Extra 410 Shotgun Barrel; Mauser Mod. 3000; Colt AR15; H&R Officer's Model Springfield Rifle; Japanese Army Rifle with Aviation Sights and Morn; Steyr 1900 6.5x53R Cal.; Mauser Banner Dated 1933; Etc.

TERMS: CASH Personal checks accepted only from persons having an established account with auctioneer

Federal licensed dealer on premises day of sale - Hilltop Sports Supply, Phone 717-365-3373 All Federal-State-Local firearms will be observed.

Guns on exhibit from 10:00 A.M. to 1:00 P.M., day of sale

For Complete Catalog Send Name, Address and Stamp to Auctioneer

**RICHARD E. BITTING, Owner**

Dockey & Dockey, Auctioneers  
Deppen, Apprentice

## PUBLIC SALE OF REAL ESTATE (22 ACRE FARM) MON., EVE., OCT. 20 at 7:00

Located along Highville Road, R.D. #2,  
Conestoga, Manor Twp., Lanc. Co., Pa. (1/4 mi east of Highville Fire Co.)

Real Estate: 2 1/2 story frame house w/gray brick asbestos siding, 8 rooms & 1 1/2 baths. 2 1/2 story frame bank barn w/cement floors & feeding troughs, steer pen & storage area, dbl. hay mow, grainery, attached 4 acre tobacco shed, lg. tobacco cellar & stripping room, 1 car garage. Separate 2 story frame hog pen & chicken houses. Separate 1 story frame equipt. shed. Separate 10' by 12' frame chicken house. House, barn & other buildings are in good condition. Total of 22.55 acres of land w/675' of road frontage along Highville Rd. & 570' of road frontage along River Rd. & 385' frontage along Pittsburg Valley Rd. Suitable for nice building lots. Property open for inspection Sat's., Oct. 4, 11 & 18 from 1 till 3.

Sale by  
**MR. & MRS. NORMAN B. BLEACHER**  
Thomas L. Goodman Atty.  
Howard Shaub Auctioneer 464-3541  
and Roy C. Probst 464-3190

## FARMERSVILLE AUCTION TUESDAY, SEPTEMBER 30, 1980 5:30 P.M.

In Farmersville, 3 mi. east of Brownstown,  
Lanc. Co., Pa.

Selling for Roy Stoner from Lancaster:

Cane seat 1 back rocker; cedar chest; blanket chest; mahogany server; single bedding; Coleman camp stove; round table & 4 chairs; 2 folding chairs w/arm rests; games; card table; step ladder; afghan; wicker fernery; portable heater; minnow bucket; green braided room size rug; elec. ice cream freezer; 80 pc. Dinner Set (pink & white Johnson Bros. England Old Britian Castles); Delft china bell; childs button shoes; old glassware; compote; balance scales; Ingraham mantle clock; Remington Fieldmaster 22 pump gun 121 model; books; movie screen; chord organ; Hamilton Beach blender; Old Linens; silver pieces; Wm. Rodgers silverware set; old red & green coverlet; records; portable TV; post cards; luggage; fish rods; picture frames; table lamps; blankets; tools, everyday dishes, etc

Also local furniture lot maple hutch; maple table & 4 chairs, sectional L.R.S.; Mahogany bookcase bedroom suite, blonde bedroom suite; box springs & mattresses; breakfast set; kneehole desk; etc. etc

We sell on commission

Call **JOHN J. RUTT**  
354-5095