

# Md. farmers can obtain drought aid

ANNAPOLIS, Md. — Maryland Secretary of Agriculture, Wayne A. Cawley, Jr., reminds all farmers who have suffered crop losses due to heat and drought that the full range of applicable USDA loan and low yield payment programs are now operational in Maryland.

"I have been informed by the regional office of the Farmers' Home Administration that seven Maryland counties have been declared disasters. These counties are Caroline, Talbot, Queen Annes, Somerset and Wicomico on the Eastern Shore, and Carroll and Frederick on the Western Shore.

"FmHA further has informed me that Dorchester County will be added to the list within a matter of days," he said.

"In addition, a number of other counties are now being considered and will likely be so designated. In particular, St. Marys, Calvert, Charles and Prince Georges in which assessments of actual losses are now being concluded as the tobacco and corn harvest seasons wind down. This information is not yet available.

"The programs of the Agricultural Stabilization and Conservation Service are now activated statewide as they do not depend on an entire county being declared a disaster area. The Maryland ASCS Office already has 1051 low yield claims being processed in regards to corn crops.

"They also are ready to process applications for emergency feed assistance from farmers, notably dairymen and cattlemen,

who have suffered heavy (greater than 40 percent) loss of hay, pasture and feed grain crops."

"Therefore, any farmer who has been hard hit this year by the heat and drought should contact his local FmHA and ASCS office to discuss his particular

situation and his eligibility for assistance.

"The paperwork wheels are turning smoothly and FmHA and ASCS are ready to go to work. So, farmers shouldn't hesitate to go in and talk to them as soon as possible," Cawley concluded.



**THE PENN-MAR SHROPSHIRE SHEEP ASSOCIATION**  
- SPONSORING THE TENTH ANNUAL -  
**REGISTERED SHROPSHIRE BRED EWE & EWE LAMB SALE**  
At The Keystone International Livestock Expo,  
Farm Show Building, Harrisburg, PA  
6 P.M.  
**SATURDAY, OCTOBER 4, 1980**  
For sale catalog write: Ted Kirby  
Box 258A, R.D. 2, Macungie, PA 17062

## Swine

(Continued from Page D21)

Located on a dairy farm owned by his father, Elam, Beiler's open front hog confinement building has an automatic feeding system and liquid manure storage. A panel ventilation system regulates the temperature of the fully insulated building, whose electrical wiring and plumbing were done by Beiler.

"I really enjoy it. I wouldn't want anything else," he said. "You can plan your own schedule and do things the way you want. Your success depends on you."

Beiler's schedule involves about an 18-hour work day when one batch of hogs is marketed and the building must be cleaned and disinfected for the next batch. About an hour a day is required to monitor the automatic feeding and watering system after the hogs have been placed in the building.

Beiler also does about 85 percent of the field work on his father's farm and last

year spent some 50 days traveling, speaking at banquets, and participating in leadership training conferences as the north-central vice president of the Pennsylvania FFA Association.

Active in his local FFA chapter, Beiler served as chapter treasurer and president of the SUN Area FFA organization.

Named the chapter's Star Greenhand and runner-up for the county Star Farmer Award, he is the first Mifflinburg member to advance to the National FFA Proficiency Awards Program. He is also a member of the Mifflinburg Young Farmers Association and the Pennsylvania Farmers Association.

The swine production award is one of 22 FFA proficiency awards provided through the National FFA Foundation, Inc., and the Pfizer Company. The winners of the national awards will receive a plaque and \$500 as well as the opportunity to participate in an expense-paid international study seminar.

**GAP AUCTION**  
FRIDAY EVE., OCT. 3  
5:30 P.M.

Located off Route 41 - Lancaster Avenue opposite Turkey Hill Minit Market - Cross RR Bridge

**ANTIQUES AND HOUSEHOLD GOODS SOLD AT EVERY AUCTION.**

CONSIGNMENTS ON MONDAYS FROM 8 00 A.M. TO 7 00 P.M. OTHER DAYS BY APPOINTMENT

Call us for pick up service

**IRA STOLTZFUS & SON, Auctioneers**

442-4936 or 442-8254

CONDUCTORS ALL TYPES PUBLIC SALES

**EQUIPMENT AUCTION**  
AT  
**BORNEMAN MOWER SERVICE**  
**SATURDAY, OCTOBER 4**  
10 A.M.

675 W. Ridge Pike, Limerick. 6 mi. east of Pottstown, Pa. on Rt. 422.

### SNOWMOBILES

1980 340 TXL Polaris - new; 1980 440 Polaris Galaxy Deluxe - new; 1980 440 Polaris Galaxy Standard - new; 1979 440 Polaris Cobra - new; 1979 250 Gemini, used; 1977 440 TX, used; 1973 295 Charger, used; 1971 399 Ski-Doo Olympic, used; 1973 TX Starfire, no engine; 1972 TX 650, as is; large Pack Sled, new; Small Pack Sled, new.

### TRAILERS

7 Northland 8' Snowmobile Trailers; 1 Magline Tillster dual axle, 5000 gross.

### USED LAWN & GARDEN EQUIP.

Farmall Cub Tractor with cult. & weights, plow & corn planter; 16 HP Wheelhorse Tractor & 36 in. mower; 10 HP Simplicity Tractor w/42 in mower & snowblower; 10 HP Allis Chalmers Tractor w/42 in. mower & snow blade; 5 HP Toro Rider & 25 in. mower; 16 HP Yazoo & 48 in. mower; 58 in. Toro Professional; RM-59 3 pt. Woods mower; Jacobsen 10 cu. ft. dump cart; Sears rear Bagger Rotary.

### NEW LAWN & GARDEN EQUIP.

C-145 Wheelhorse Tractor & 42 in. mower, 8 hp, new-demo; 30 in. Parker lawn sweeper; 31 in. Wheelhorse sweeper; Toro Rototiller; Ariens 5 hp Tiller; Ariens 6 hp Tiller; Ariens 5 hp rear tire Tiller; 3 pt. Kubota 4 ft. disc; 6 ft. Yorke Rake; Toro Rear Bagger SP 21 in.; Toro Mulching Mower SP 21 in.; 19 in. Toro Rotary; Assortment of new Disston & Weed Eater Trimmers. Used chain saws, & many other items not listed. Do not miss this sale of quality new & used equipment.

489-7127

948-2050

**HESS & MOYER**  
AUCTIONEERS

115 HESS ROAD • COLLEGEVILLE, PA 19426

## PUBLIC SALE

**REAL ESTATE, ANTIQUES & HOUSEHOLD ITEMS**  
**SATURDAY, OCTOBER 4**

Located 11 miles North of Willow Hill Interchange of the PA turnpike along Rt. 75 between Doylesburg & Concord in Franklin Co. Pa.

Real Estate (To be offered at 1 P.M.)

Lodge type dwelling containing large livingroom with fireplace, kitchen, 2 bedrooms, bath & pantry on the first floor. One large room on second floor. Also a basement. Lot contains 7 acres more or less with garage & storage shed. Fronting on Rt. 75 near village of Concord, Fannett Twp., Franklin Co. & is located in a beautiful woodland setting at the foot of the Conococheague Mountain near Big Round Top.

Terms - 10% of purchase price to be paid when property is struck down, balance in 30 days. Other terms will be given day of sale.

Seller reserves the right to reject any or all bids on Real Estate.

Inspection of Real Estate - Thursday, October 2 - 1-4 P.M.

Antiques, Household Items & Dishes will be sold starting at 10:30 A.M.

Owners

**HAROLD W. EVANS, JR. & KENNETH J. EVANS**

Auctioneers  
Speer & Harry  
717-349-2656

## PUBLIC SALE

**RARE & VALUABLE COINS, WATCHES & COLLECTORS' ITEMS**

**THURSDAY EVENING, OCTOBER 2, 1980**  
6:00 P.M.

Sale to be held within Winterstown Fire Hall. Located approx. 4 mi. south of Red Lion, PA along Rt. 24, in the village of Winterstown, PA

### GOLD COINS-

1905-\$1.00 Lewis & Clark Commemorative-VF; 1852-\$1.00-XF; 1908-\$2½ Indian-XF; 1906-\$2½ Liberty-AU; 1878-\$3.00-Rare-XF to AU; 1880-\$5.00 Liberty-VF; 1909-\$5.00 Indian-XF to AU; 1912-\$10.00 Indian-AU; 1897-\$10.00 Liberty-XF to AU; 1906S-\$20.00 Liberty-XF; 1879-\$20.00 Liberty-XF plus -

### SILVER DOLLARS

Over 100 pieces, mostly VG, AU & BU, including Morgans, Peace, 1878 Feather, Carson City in orig pack; etc

### HALF DOLLARS

Many fine pcs., such as 1928S Walking Lib; 1833 Liberty Cap, 1893 Columbia Comm; 1907-0 & 1908-S Barber, 1917-1946 Walking; etc; Many good Franklin pcs.

### QUARTERS

Many pcs such as 1898 Barber - VF; 1929 thru 1964; 1877-CC Seated - VG, and more

### DIMES

1858 - O Seated; 1912-S Barber, 1852 Seated, 1853 Half-Dime w/hole; 1902 thru 1902 Barber; and many more, plus many Mercury & Roosevelt pcs

### NICKELS

1882 Shield; 1898 - V; 1865 thru 1870 3-cent Nickels - all G & VG; 1876 Shield, 1897 & 1899-V - VF & XF, and many more

### CENTS

Indian Heads from 1859 thru 1900's including rare 1884, 1885, 1886, 1877 etc, 1800-1850 Large Cents; 1864 Bronze; and many more good pcs

### COLLECTORS' ITEMS

Antique Assayer's Balance Scale w/weights, Clear plastic commode seat w/coins sealed in the seat and currency sealed in the lid - very unusual - you'll like; 5 sets Las Vegas casino dice; 1929 \$20.00 National Currency - Boston, MA - nice, 5 sets of War Nickels - VF; Many Silver Certificates; 2 - 1935H Hawaiian \$1 00 - UNC, numerous sealed Mint Sets and Proof Sets; several belt buckles w/silver dollars; 1932 Washington medallion; 1738 Copper Coin, 20 pc Indian Cents in a plastic holder, and more, too numerous to sort; plus 9 watches - some gold, some running, some very nice There is approx 450 pcs in the sale Something for everyone Be sure to attend TERMS - Strictly cash, or approved check w/acceptable ID All buyers will register, and will receive their purchases after having paid their account

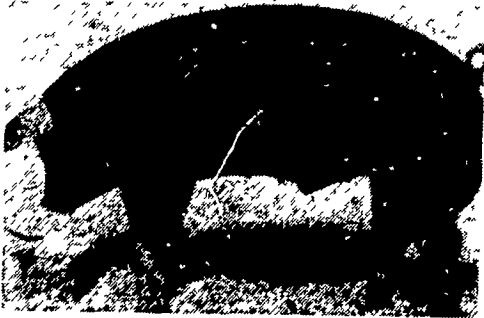
SALE BY SECHRIST AUCTION SERVICE

Auctioneers: Bob & Tom Sechrist  
Fantastic Food Available

**PA. DUROC BREEDERS**  
**'NORTH EASTERN**  
**INVITATIONAL SHOW & SALE**  
**FRIDAY, OCTOBER 24, 1980**

Show 3:00 P.M. Sale 7:00 P.M.

Held at the Lebanon Area Fairgrounds, Lebanon, PA



Selling:

Boars, Bred Gilts & Open Gilts

Animals negative to Brucellosis & Pseudorabies

Sale Sponsored by

**PA DUROC BREEDERS**

For catalog Write

Ken Fetterolf

Rd 2 Box 123

Centre Hall, PA 16828

Auctioneer Harry Bachman

Annaville, PA

Judge and Guest Consignor:

Roger Bentley

Sabina, Ohio