

Keystone Expo to open Thursday

Eight hitch sheep team to perform at show

HARRISBURG — The ewes are coming to Harrisburg, trailing a wagon behind them, October 3 and 4 during the Keystone International Livestock Exposition at the Harrisburg Farm Show Building.

It will be an event to make the Clydesdale teams a bit envious, as eight sheep will be hitched to a blue wagon and perform figure eights, change leads 90 degree turns and many other driving features — all without the use

of a bit in their mouths. The eight hitch pure-bred Hampshire sheep driving team is owned by the Edwin Etzler Family of Van Wert, Ohio. The team will perform on the State Capitol steps, Third Street side, Friday, October 3, at 8:30 a.m. with State Agriculture Secretary Penrose Hallowell at the helm.

The team will then proceed to the Harrisburg Farm Show Building for performances Friday af-

ternoon and all day Saturday. A special performance will be held Saturday at 2:30 p.m. in the large arena.

The unique hobby of the sheep, and idea belong to Edwin Etzler. Etzler drives either a two, four, six or eight sheep hitch.

"When I was on my father's farm," he said, "I liked driving horses and decided I would like to drive sheep. Everyone told me I was crazy, and that sheep

were too dumb to learn to drive."

(Turn to Page D9)



Edwin Etzler steers his eight hitch sheep driving team in a practice run on their home in Van Wert, Ohio. The Etzler's will be performing at the Keystone International Livestock Exposition at the Harrisburg Farm Show Complex October 3 and 4. The Exposition runs October 2 to 6.

HIGH PRESSURE WASHING

OF POULTRY HOUSES AND VEAL PENS

BARRY L. HERR

1744 Pioneer Road, Lancaster, Pa.
Phone: 717-464-2044

LIQUID GLASS

ITS WATERPROOF, ACID AND SALT PROOF

Apply like paint, when dry has a surface like porcelain.

Has lasted for 11 years in milk houses and still is in good shape

Some Uses:

- Poultry & Cattle water troughs
- Farrowing & Finishing Houses
- Water Proofing Basements
- Bunk Feeders
- Milking Parlors
- Mangers
- Use Instead of White wash

USDA APPROVED FOR MEAT PROCESSING ESTABLISHMENTS.

AT A FRACTION OF THE COST OF GLASSBOARD AND TILING!

ARMSTRONG CO.
GEORGE NUSSER
RD1, Box 268
New Bethlehem, PA
814-275-2774

LANCASTER CO.
J.B. ZIMMERMAN & SONS
Blue Ball & Strasburg, PA
717-354-4955

PERRY CO.
RONALD FAUTH
R.D. 1 Loysville, PA
717-438-3530

BEDFORD CO.
BENCE FARM EQ.
Bedford, PA
814-623-8601

BRANDT'S SUPPLY INC.
601 E. High St.
Elizabethtown, PA
717-367-1221

POTTER CO.
M & M BARN SALES
RD #1
Westfield, PA
814-334-5504

BERKS CO.
LONGACRE ELECTRICAL SERVICE, INC.
602 Main St.
Bally, PA
215-845-2261

LANCASTER & CHESTER CO.
LAPP'S HARDWARE & DAIRY SUPPLIES
RD 4, Box 96,
Loop Road
Quarryville, Pa. 17566
717-786-3970

SOMERSET CO.
MULTI SERVICE EQUIP. CORP.
RD 2, Box 114
Somerset, PA 15501
814-445-6842

BRADFORD CO.
HARLAN MARTIN'S SURGE SALES
Troy, PA
717-297-3972

LEBANON CO.
HUBER'S ANIMAL HEALTH SUPPLIES
810 Tulpehocken Road
Myerstown, PA 17067

YORK & ADAMS CO.
PARADISE FARM & HOME CENTER
RD 1, Box 265
Thomasville, PA
717-225-1064

CENTRE CO.
HENRY M. GLICK
Box 203C, RD2
Howard, PA 16841

TRI-COUNTY SWINE SYSTEMS
608 E. Evergreen Rd
Lebanon, PA 17042
717-274-3488

WESTERN MARYLAND
KINSINGER CENTRAL TRACTOR PARTS
RD2
Oakland, MD 21550
301-334-4129

DAUPHIN CO.
LANDIS LABOR SAVERS
RD1, Box 410
Millersburg, PA 17061
717-692-4647

MIFFLIN CO.
B.A. ROOK
Box 552
Milroy, PA 17063
814-364-1243
717-667-2115

MARYLAND
P & S EQUIPMENT INC.
3639 Grier Nursery Road
Street, MD 21154

FRANKLIN CO.
DOW UPPERMAN DAIRY EQ.
1126 N. Franklin St.
Chambersburg, PA
717-264-6007

ALLENVILLE
PLANNING MILL
E. Main St.
Allenville, PA 17002
717-483-6386

NORTHERN FRANKLIN & CUMBERLAND CO.
A. ARTHUR WITMER
RD1
Fayetteville, PA 17222
717-352-7910

MONTGOMERY CO.
LANDIS FARMSTEAD AUTOMATION
RD, Box 207
Milton, PA 17847
717-437-2375

TRI-STATE FARM AUTOMATION, INC.
Rt. 9, Box 338
Hagerstown, MD
21740

INDIANA CO.
CLAIR C. BEATTY
R.D. 4 Box 188A
Indiana, PA 13701
412-465-7368

NORTHAMPTON CO.
ARTHUR MILLER SURGE DAIRY SUPPLIES
Wind Gap, PA
215-863-9712

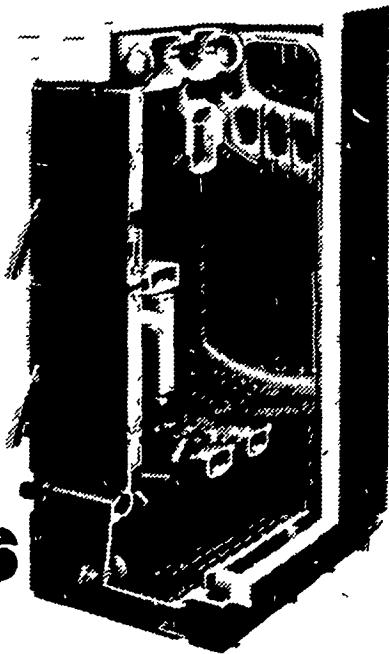
VIRGINIA
JOHN G. DALLAIN
RD 1 Box 113
Remington, VA 22734
703-439-3842

#1

WOOD OR COAL

Find out why we're #1 in the World!

- Adds on to your existing Hot Water Heating System.
- Cast Iron Construction.
- Wet Base.
- ASME Approved.
- Burns Wood or Coal.
- Converts to Oil or Gas.
- Automatic Control.



Buderus

HOWARD E. GROFF CO.

Fuel Oil, Gasoline, and Coal
111 E. State Street, Quarryville, PA 17566
Phone: 717-786-2166

Direct Dealership Inquires to:

HORACE E. HEINDEL & SONS FARMS

Eastern Region Distributor
P.O. Box 3146, York, PA 17402
Call Jeff -717-755-8062