

Livestock market and auction news

Lancaster Weekly

(Continued from Page A2)

steers 2.00-3.00 lower, instances 4.00 lower; slaughter heifers .50-1.50 lower; cows closed the week 1.00-2.00 lower, instances 3.00 lower; bullocks weak to 1.00 lower; bulls 1.00-2.00 lower. Supply included 48 per cent slaughter steers, 17 per cent cows, 10 per cent bulls, 4 per cent slaughter heifers with the balance mainly feeder steers, large share held for Friday's auction.

SLAUGHTER STEERS: High Choice and Prime 3-4 1100-1425 lbs. 69.75-72.50, few early part of week 73.00-75.25; Choice Grade 2 1100-1325 lbs. 71.50-74.00, few head early part of week 74.00-75.85; Choice 2-4 950-1350 lbs. 69.50-72.00, few 3-4 67.50-68.50, high Good and low Choice 2-3 65.75-68.50, Good 2-3 61.00-66.50; Good and Choice 1100-1550 lbs. holsteins 57.50-62.50, few mostly Choice 62.50-64.25, Standard 1-2 52.00-59.00.

SLAUGHTER HEIFERS: Choice 2-3 850-1050 lbs. 62.50-68.25, few Yield Grade 2 68.25-70.00; Good 2-3 825-1050 lbs. 60.00-62.50.

COWS: Utility and Commercial 1-3 47.00-50.00, few 50.50-52.85, Cutter 1-2 44.50-49.00, few 49.25-50.50, Canner and low Cutter 40.00-45.00.

BULLOCKS: Choice 1000-1350 lbs. 59.00-66.00, few 66.00-69.25; Good 1000-1300 lbs. 54.00-60.00.

BULLS: Yield Grade 1 1300-1900 lbs. 57.75-63.00, few mainly early part of week 63.00-66.00 with couple to 69.25; Yield Grade 2 1000-1350 lbs. 54.50-59.00, few 950-1000 lbs. 52.75-54.50.

VEAL CALVES: Vealers uneven, Choice and Prime steady to weak, instance 5.00 lower; Good and low Choice 80-120 lbs. closed the week mostly steady after some

sales early part of week being as much as 15.00 higher. Demand good for calves returned to farm.

VEALERS: Few Prime 210-320 lbs. 115.00-120.00; Choice 150-280 lbs. 95.00-108.00, few early part of week 108.00-114.00; high Good and low Choice 150-270 lbs. 76.00-95.00, 80-115 lbs. 60.00-72.00 with sales early part of week mainly 72.00-83.00, 60-80 lbs. 55.00-70.00.

RETURNED TO FARM: Bulk 80-115 lbs. holstein heifers 100.00-160.00, around 90 head 170.00-202.00; bulk 85-115 lbs. holstein bulls 75.00-99.00 with about 150 head 100-115 lbs. 99.00-106.00.

Chambersburg Auction

Thursday, September 25
Chambersburg, Pa.

Report supplied by FDA

CATTLE: 342. Compared with last Thursday's market: Slaughter steers 2.00 lower; Sl. cows weak-2.00 lower; Sl. bulls 1.00-2.00 lower, few low to average Choice No. 2-4 950-1150 lbs. 68.00-70.35; Good 60.50-64.75; few Standard 55.00-58.00; few Good & Choice 57.75-62.50; Sl. cows Utility & Commercial 46.85-51.86, few 52.85; Cutters 44.75-48.75; Canner & L. Cutter 40.00-45.00; Shells down 35.00. Sl. bullocks: few Good 54.75-57.00; Yield Grade No. 1 1100-1820 lbs. 53.25-59.75.

FEEDER CATTLE: Bulls Large Frame No. 2, 400-800 lbs. 51.50-58.00.

CALVES: 39. Vealers 5.00-12.00 higher, bulk of supply returned to farm. One Prime 113.00; Choice 85.00-105.00; Good 75.00-94.00; Standard & Good 70-95 lbs. 73.00-80.00; Utility 50-100 lbs. 55.00-70.00.

FARM CALVES: Hol. Bulls 80-130 lbs. 78.00-120.00, mostly 90.00-112.00; Hol. Heifers 80-190 lbs. 117.50-181.00.

HOGS: 135. Barrows and

gilts weak-.75 lower. US No. 1-2 200-230 lbs. 49.10-49.50; No. 1-3 200-240 lbs. 48.35-48.75, one lot No. 1-3 182 lbs. 44.25. US No. 1-3 275-525 lbs. 39.50-44.00. Boars 34.00-36.50.

FEEDER PIGS: 61. Few US No. 1-3 20-30 lbs. 8.50-12.00 per head; few No. 1-3 40-55 lbs. 15.50-24.00.

SHEEP: 27. Few Good to low Choice 60-100 lbs. 52.00-67.50.

Weekly Summary

Friday, September 26

Report supplied by FDA

CATTLE: 6240 Compared with 6029 head last week, and 6531 head a year ago. Compared with last week's market: Slaughter steers 1.00-3.00 lower; Sl. heifers steady-1.00 lower; Sl. cows mostly 1.00-2.00 lower; Sl. bullocks 1.00-2.00 lower; Sl. bulls steady-week, spots 2.00 lower. Sl. steers: High Choice & Prime No. 3-4, 70.50-72.75, few 74.25; Choice No. 2-4, 67.50-71.50, few 75.50, Good 62.00-67.50; Standard 56.00-60.85. Sl. heifers: Choice 60.00-68.25; Good 58.00-62.00; Standard 52.00-56.00. Sl. cows: Utility & Commercial 45.50-50.50; Cutters 43.00-47.50; Canner & L. Cutter 38.00-45.50; Shells

down to 30. Sl. bullocks: Choice 60.00-66.00; Good 57.00-62.00; Standard 53.00-60.00. Sl. bulls: Yield Grade No. 1, 1200-2400 lbs. 57.50-61.10; yield Grade No. 2, 1000-1400 lbs. 54.00-58.00.

FEEDER CATTLE: Steers Large Frame No. 1 350-850 lbs. 70.50-88.00; Medium Frame No. 1, 300-600 lbs. 60.00-69.00, few 77.00. Heifers Medium Frame No. 1 300-500 lbs. 52.00-63.50. Feeder Bulls Medium & Large Frame No. 1 500-800 lbs. 50.00-66.00.

CALVES: 4167 Compared with 4368 head last week and 4180 head a year ago. Vealers Grading Good & Choice mostly steady, Standard & Good steady-5.00 higher; Choice 90.00-110.00; Good 80.00-95.00, Standard & Good 90-115 lbs. 70.00-80.00; 65-90 lbs. 65.00-73.00; Utility 50-100 lbs. 50.00-65.00.

FARM CALVES: Active. Hol. Bulls 80-130 lbs. 75.00-130.00, mostly 85.00-105.00; Hol. Heifers 80-200 lbs. 80.00-203.00, mostly 130.00-200.00.

HOGS: 6790 Compared with 7441 head last week and 8126 head a year ago. Barrows and gilts 1.00-2.00 higher although price started to decline from

middle of week on. US No. 1-2 200-240 lbs. 50.00-53.00, few 55.00. No. 1-3 200-250 lbs. 49.00-52.10; No. 2-3 190-270 lbs. 47.00-51.00; No. 1-3 140-190 lbs. 42.00-47.50; Sows mostly steady. US No. 1-3 300-585 lbs. 39.00-45.00; No. 2-3 300-680 lbs. 36.00-40.00. Boars 30.00-38.00.

FEEDER PIGS: 1335 Compared with 1393 head last week and 1975 a year ago. Feeder Pigs unevenly steady. US No. 1-3 20-35 lbs. 8.50-18.00 per head; No. 1-3 35-50 lbs. 17.00-26.00; few No. 1-3 50-85 lbs. 24.00-36.00 per head.

GRADED FEEDER PIGS: 3336 Compared with 2931 head last week and 4650 head a year ago. All sales by CWT. Feeder Pigs mostly 3.00-9.00 higher. US No. 1-2 25-40 lbs. 79.00-99.00, 40-50 lbs. 72.00-90.00, 50-60 lbs. 67.00-78.00, 60-80 lbs. 58.00-72.00; US No. 2-3 25-40 lbs. 59.00-90.00, 40-55 lbs. 51.00-77.00, 55-65 lbs. 51.00-55.00.

SHEEP: 886 Compared with 822 head last week and 947 head a year ago. Spring/Wooled sl. lambs steady-2.00 higher, Choice 60-110 lbs. 60.00-69.00; Good 45-100 lbs. 49.00-60.00; Utility 40-85 lbs. 40.00-50.00. Sl. ewes: 15.00-28.00, few 40.00.

Lancaster Feeder Cattle

Friday, September 12
Report supplied by USDA

Today 363
Last Friday 755
Last Year 1146

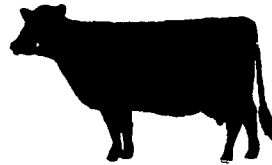
TREND: Compared to last Friday small supply feeder steers 1.00-3.00 higher to a good demand. Supply included about 160 head sold in lots of 4-15 head, with bulk of supply sold in lots of three or less.

FEEDER STEERS MEDIUM FRAME 1: Couple lots 350-355 lbs. 76.00-79.25; one lot 475 lbs. 74.75; 520-540 lbs. 71.25-73.25; one lot 6 lbs. 72.25; couple lots 800-830 lbs. 65.75-71.00.

SMALL AND MEDIUM FRAME 1: One lot 720 lbs. 69.10.

MEDIUM FRAME 1-2: One lot 435 lbs. 68.50; 540-620 lbs. 68.75-69.75; one lot 805 lbs. 67.00; one small lot 1040 lbs. 64.10.

MEDIUM FRAME 2: Couple lots 840-995 lbs. 60.00-62.50.



KATOLIGHT DEPENDABLE EMERGENCY POWER

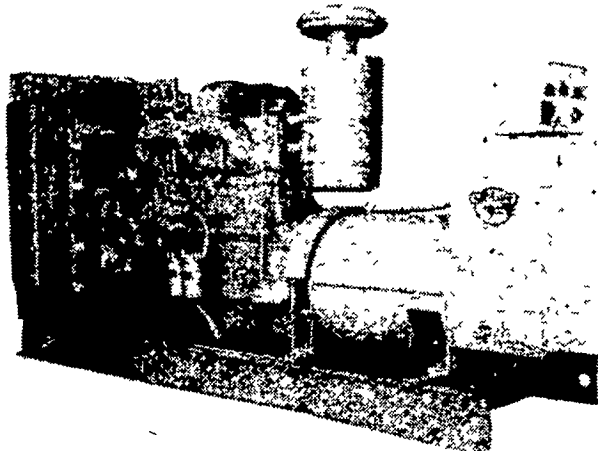
• Dairy

• Poultry

• Hog

for...

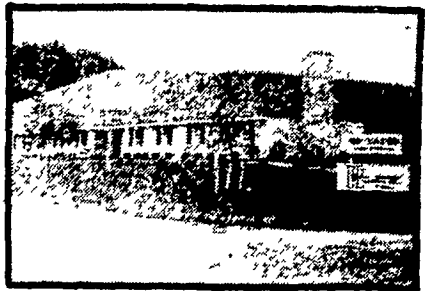
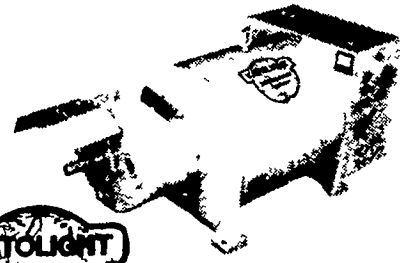
Controlled Environment,
Automated Feeding Operations



Low Cost Protection Agri-Alternator

Could pay for itself in one blackout. Can be run continuously until power is restored. PTO drive. Use for portable power, too. Sizes to 150 KW.

Katolight Standby Power Packages give you the finest in power outage protection. Wide choice of models in sizes to 250 KW. Automatic or push-button transfer; gasoline or diesel fuels. Extra overload capacity. Models for irrigation, also.



H SHEY EQUIPMENT
COMPANY, INC.

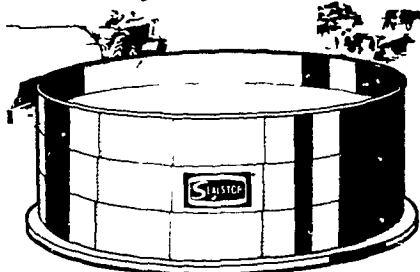
SYCAMORE IND. PARK
255 PLANE TREE DRIVE
LANCASTER, PA 17603
(717) 393-5807

Route 30 West At
The Centerville Exit



PLANNING LIQUID MANURE STORAGE?

We Will Custom Design
Your System to Meet Your Needs



Grain and
Forage
Structures
Available
For
Immediate
Erection

BUY AND BUILD NOW

Pay For In April, 1981

CALL US TODAY: 717-273-9324

PENN DUTCH FARM SYSTEMS, INC.

1730 Highway 72 North, Lebanon, PA 17042

OR MAIL COUPON

I AM INTERESTED IN _____ LF 9/27/80

- Forage Unit Grain Unit
 Liquid Manure Storage
 Replacing Another Bottom Unloader With A Laidig

NAME _____

ADDRESS _____

CITY _____ STATE _____ ZIP _____

TELEPHONE (includes area code) _____

NO. OF BEEF _____ DAIRY _____ HOGS _____