

## DEAD STOCK REMOVED PROMPTLY ANYTIME — ANYWHERE

We Charge For distant Pickups.

**A. F. BRANDT'S SONS**  
RENDERERS  
**ELIZABETHTOWN, PA**  
**(717) 367-6026**

## GRASSHOPPER THE MOWER THAT MAKES OTHER MOWERS OBSOLETE

### FALL SALE \$100 CASH REBATE

ON PURCHASE OF 1980 MODEL  
GRASSHOPPER MOWER

Offer Ends Sept. 30, 1980

Make Your Best Deal - Then Get  
\$100 Cash From Lawn Care Distributors



Independent dual lever  
directional control of drive  
wheels instantly positions the  
fully visible mower deck exactly  
where you want it

1. ELIMINATES HAND TRIMMING  
(Because your mower deck is out front)
2. HAS ZERO TURNING RADIUS
3. ALL HYDROSTATIC DRIVEN
4. MOWER P.T.O. SHAFT DRIVEN

12 or 16 H.P. Engine in 44", 52" &  
61" Mower Deck Widths

#### OPTIONAL ATTACHMENTS AVAILABLE

- Snowthrower or Snow Plow
- Vacuum grass catcher

AVAILABLE AT ANY OF THE FOLLOWING DEALERS:

#### PENNSYLVANIA

**A.F.M. EQUIPMENT CO.**  
Plainsville, Pa. Luzerne Co.  
717-824-7918

**BLUE MOUNTAIN ENTERPRISE**  
Jonestown, Pa., Lebanon Co.  
717-865-2994

**CHARLIE'S SALES & SERVICE**  
Brogue, Pa., York Co.  
717-927-6500

**NEIMAN EQUIPMENT**  
Dover, Pa., York Co.  
717-292-2101

**ROGLEN EQUIPMENT**  
Elverson, Pa., Chester Co.  
215-286-9648

**STOLTZFUS FARM SERVICE**  
Cochranville, Pa., Chester Co.  
215-593-2407

**THOMAS FARM EQUIP.**  
Avondale, Pa., Chester Co.  
215-268-2181

**LAWN CARE OF PA.**  
Martindale, Pa., Lancaster Co.  
215-445-4541

**JOHN McLURE JR.**  
Warriors Mark, Pa.,  
Huntingdon Co.  
814-632-5955

#### DELAWARE

**KEENER & SENSENIG CO.**  
Wilmington, Del.  
302-655-2790

FOR ADDITIONAL INFORMATION  
ON THE GRASSHOPPER MOWER  
(Unique In A Class Of It's Own)  
Call or Write

**LAWN CARE DISTRIBUTORS**  
Box 25, Martindale, Pa. 17549  
Phone: 215-445-4541  
Dealer Inquiries Invited

## Berks farmers urge mushroom quotas

TEMPLE — President Jimmy Carter is being urged this week by Berks County Farmers' Association President John K. Kooker, Jr. to approve a report of the International Trade Commission to place Quantitative Restrictions on canned mushroom imports.

Imports of canned or processed mushrooms have increased by 70 percent in the last five years.

"No segment of agriculture or of industry can withstand or absorb that amount without greatly depressing domestic markets," said Kooker, "and our growers contribute too much to Berks County's economy to let this happen without a fight."

Kooker made this request in a letter and is asking all member families to write to the President also.

Kooker's letter follows that of Pennsylvania Farmers' Association President, Eugene Thompson. The State Association represents over 22,500 farm families.

"I join with President Thompson in this most important effort to prevent

destruction of an important segment of agriculture," said Kooker.

Fifty percent of the nation's mushrooms are

produced in Berks and Chester county and in Berks is nearly 25 percent of the agriculture income.

"The quantitative limitations recommended by

the ITC may not be adequate, but is a step in the right direction," concluded Kooker, "and maybe it is about time that we in this country come first."

## Ag gets its own travel guide

LITITZ — The American Society of Agricultural Engineers has published a unique travel guide devoted to the history of farming in the United States and Canada. "Travel Historic Rural America", compiled and edited by Sam Rosenberg of the ASAE staff, will bring Americans and Canadians close to their farming heritage.

Surprisingly, the historic farming heritage of North America is well preserved. The 104-page book spans a panorama of living history farms, restored rural village, museums and annual events.

The emphasis of the travel guide is on farming techniques and farm machinery and equipment. The time frame stretches from Colonial America to a

farm in Michigan where time was "frozen" in 1950. In between, is the agriculture of 300 years spread from the Atlantic to the Pacific, from the Canadian provinces to the Rio Grande.

Directions, descriptions, hours, admission costs, and telephone numbers are listed for nearly a hundred living history farms and restored rural villages; over 500 museums with collections of farm machinery, tools and equipment; plus gristmills, woolen and cotton mills, and a few offbeat places as well

Well over a hundred annual events are listed with emphasis on annual threshing reunions and antique machinery shows. For annual events, a listing includes directions, hours, admission costs, telephone numbers and the name of a sponsor.

"Travel Historic Rural America," is available from the American Society of Agricultural Engineers, Box 410, St. Joseph, Michigan 49085. The price is \$5.95 per copy postpaid.

## Ag policy

(Continued from Page C24)

Join an organization with aims similar to your own. Become active in a political party and work for candidates who represent your views or run for office yourself.

Take advantage of opportunities to bring your views to the attention of the executive branch by working through the White House staff, the staff of the Council of Economic Advisors, the Office of Management and Budget, and the Department of Agriculture.

Attend legislative hearings and testify on issues about which you have informed opinions. Get acquainted with your Senators and Congressmen and contact them when you have concerns. Join in legal action affecting court

decisions on public policy.

Your concerns have an important influence on how your representatives in Congress will vote. They know that their reelection depends on pleasing their constituents.

However, they can't be expected to vote your way on every issue, since many constituents on both sides will have strong feelings. In the end, policymakers must weight all the conflicting views plus the dictates of conscience.

For more detailed information about influencing agricultural and food policies, write to Gerald F. Vaughn, Agricultural Hall, University of Delaware, Newark, De. 19711 and ask for the free fact sheet: "How Agricultural and Food Policies are Developed."

## MD PA FARMERS NJ DE SEWAGE SLUDGE

Is it worth it?

When used in a soundly managed, state permitted program, up to 100% of your crops N & P can be custom applied. For details write:

c/o Lancaster Farming  
PO Box 366 R-22  
Lititz, PA 17543

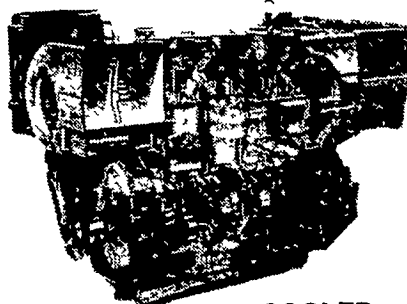
## REPOWER with VM DIESEL



Harvesters, Haybines,  
Tractors, Cornpickers,  
Balers, Hydraulic  
Systems, Corn Binders,  
Choppers

### All New HR SERIES - Air Cooled - Oil Cooled - Water Cooled

#### General Features:



OIL COOLED

#### USED DIESELS

- SR 2 Lister
- SR 3 Lister
- HRS 6 Lister
- 1 Cylinder Deutz
- DVA 2200 Stanzi

**471 DETROIT**  
Reasonably Priced

- Integrally cast cylinders with inserted and removable wet type cylinder liners
- Light hypereutectic alloy pistons
- Extra-resistant steel connecting rods alloyed with special alloy head bearings
- Surface hardened steel crankshaft
- Drop-forged, casehardened and tempered steel camshaft
- Anti-friction cast-iron tappets alloyed
- Cast-iron tunnel type crankcase
- Rotary injection pump with mechanical governor

- Force-feed lubrication with built-in circuit and lobe type pump
- Diaphragm pump feed
- Oil and fuel filters with integral type element.
- Special structure and patented engine with consequent increases in performance and easier operation with low weight/output ratio low smoke emissions.
- Engine based on a design "modulus" formula which allows a maximum parts standardization and interchangeability.

## QUEEN ROAD REFRIGERATION

Box 67, Intercourse, PA 17534  
Phone: John D. Weaver - 717-768-9006 or  
768-7111 or  
Answering Service - 717-354-4374

**24 HOUR  
SERVICE**