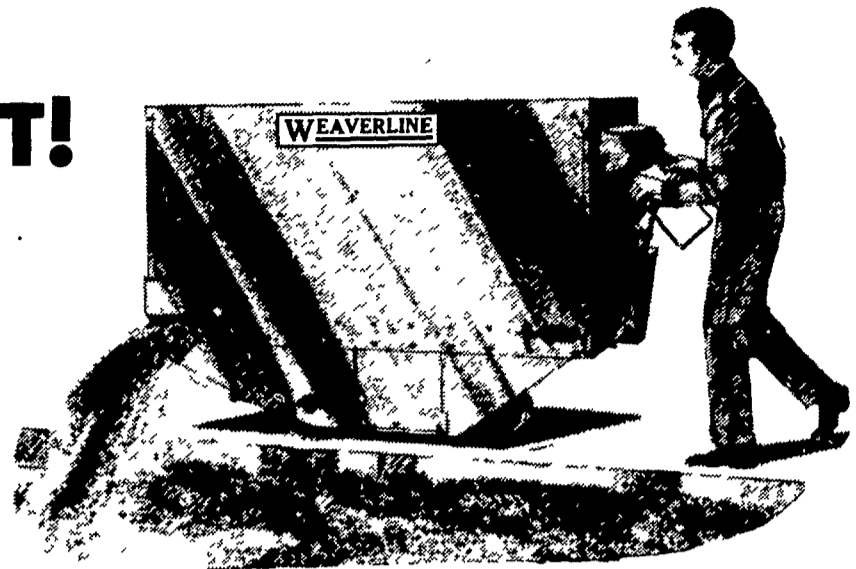


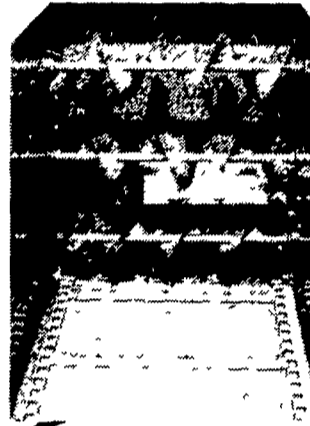
THE WEAVERLINE SERIES 300 BATTERY-POWERED FEED TRANSPORT CART!

**TWO SIZES: 24 BUSHEL MODEL 323
30 BUSHEL MODEL 330**

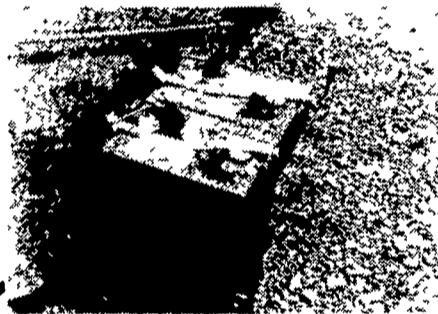
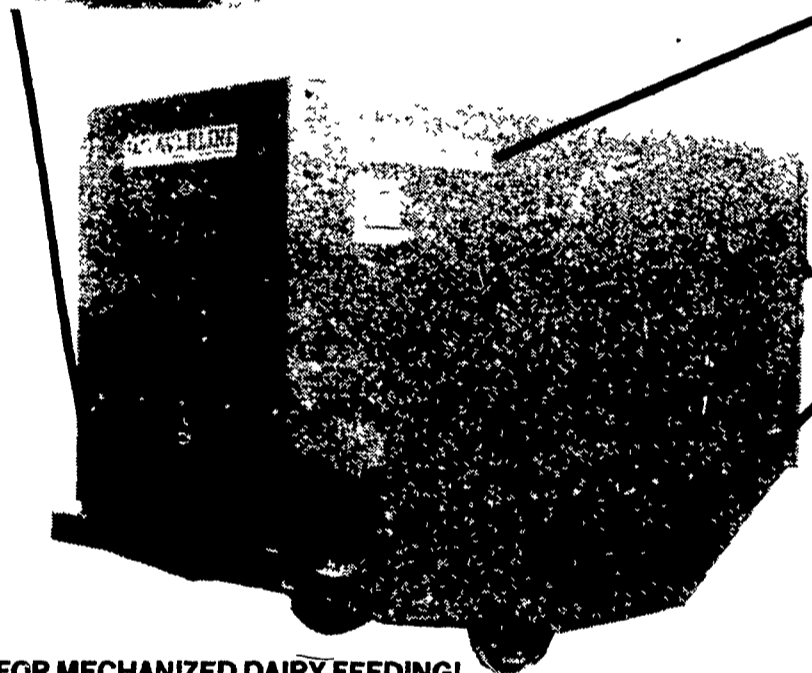
Check These Advanced-Engineering Features



**PROVEN UNLOADING-
DRIVE LINKAGE**
Smooth-running roller-chain and belt-drive combination provides 6 conveyor speeds plus individual on-and-off control of upper and lower sets of augers.

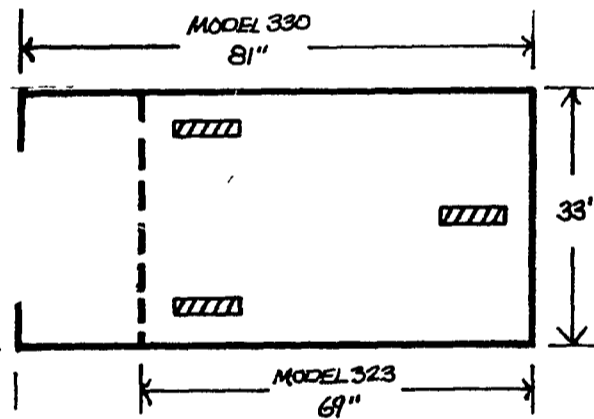


CONTROLLED UNLOADING
Apron conveyor and two pairs of augers can be controlled individually. Upper augers prevent bridging. Lower augers and conveyor control discharge flow.



CONVENIENT POWER PACK
Weaverline 4-unit battery pack provides plenty of transport and unloading power. Batteries roll out either side of quick servicing. To charge, just plug into charging receptacle from any 115 volt AC power source.

FOR MECHANIZED DAIRY FEEDING!
Cut your labor costs with this modern Weaverline material-handling system. Built to stand up to years of heavy loads, Weaverline Series 300 feed-transport carts are designed with larger discharge augers, more auger clearance, extra-heavy steel bottoms, stronger conveyor shafts and heavy-duty bumper guards. For a dairy feeding system that demands minimum maintenance and service, specify Weaverline. See these new Series 300 transport carts at your dealer. Or write Weaverline Corporation, Churchtown, Pennsylvania 17510. Telephone (215) 445-6724.



TWO MODELS
For maximum capacity, the larger Model 330 measures 81 inches long, 33 inches wide and holds 30 bushels. For tight corners, the compact Model 323 69 inches long and 33 inches wide. Holds 24 bushels. Tricycle running gear makes both units easy to turn—easy to guide.

**VISIT THE
RYDER
SUPPLY
EXHIBIT
AT THE
BLOOMSBURG
FAIR
SEPTEMBER
22 - 27**

CALL YOUR LOCAL DEALER AND GO THE WEAVERLINE WAY

- | | | | | |
|---|--|--|--|---|
| <p>BENCE'S FARM EQUIPMENT
Route 2, Dutch Corner
Bedford, PA 15522
Tel. 814-623-8601</p> | <p>TED HIRSCH COMMERCIAL &
FARM REFRIGERATION SERVICE
R.D. #1, Box 44
Montrose, Pa. 18801
Tel. 717-278-3607</p> | <p>GEORGE A. KELLER GARAGE
Dennis Keller
Rural Route 1
Tyrone, Pa. 16686
Tel. 814-684-3218
Attention: Dennis Keller</p> | <p>PEOPLES SALES & SERVICE
Oakland Mills
Pennsylvania 17076
Tel. 717-463-2735</p> | <p>TRI COUNTY FARM & HOME CENTER
Rural Route 1
Bloomsburg, Pa. 17815
Tel. 717-437-3440</p> |
| <p>BRANDT'S FARM SUPPLY, INC.
601 E. High St.
Elizabethtown, Pa. 17022
Tel. 717-367-1221</p> | <p>HISTAND'S FARM & HOME CENTER
R.D. #1, Box 231
Rome, Pa. 18837
Tel. 717-744-2371</p> | <p>M.R. CLAIR McMILLEN
Rural Route 1
Loysville, PA 17047
Tel. 717-789-3961</p> | <p>PETERMAN FARM EQUIPMENT, INC.
225 York Road
Carlisle, PA 17013
Tel. 717-249-5338</p> | <p>TROUT SPRING FARM
523 Willow Road
Lancaster, Pa. 17601
Tel. 717-299-2536</p> |
| <p>PAUL DOTTERER FARM EQUIPMENT
R.D. #2, Box 505
Mill Hall, Pa. 17751
Tel. 717-726-3471</p> | <p>KAUFFMAN FARM SUPPLY
Mt. Pleasant Mills
PA. 17853
Tel. 717-539-4571</p> | <p>M & M BARN SALES & SERVICE
Rural Route 1
Westfield, Pa. 16950
Tel. 814-334-5504</p> | <p>SWOPE & BASHORE
Rural Route 1
Myerstown, Pa. 17067
Tel. 717-299-2536</p> | <p>C. J. WONSIDLER BROS.
Rural Route 1
Quakertown, Pa. 18951
Tel. 215-536-7523</p> |
| <p>EDGEFIELD FARM
R.R. 2
Quarryville, Pa. 17566
Tel. 717-786-3897</p> | <p>ZIMMERMAN FARM SERVICE
Box 86
Bethel, Pa. 19507
Tel. 717-933-4114</p> | <p>KAUFFMAN FARM SUPPLY
East Main St.
Belleville, Pa. 17004
Tel. 717-935-2131</p> | <p>SYSTEMA FEED SERVICE
R.D. #3, Box 540N
Sussex, N.J. 07461
Tel. 201-875-5449</p> | <p>DONALD B. MARTIN
MARTIN EQUIPMENT CO.
537 Falling Spring Rd.
P.O. Box 219
Chambersburg, Pa. 17201
Tel. 717-263-3505</p> |

RYDER SUPPLY CO.

539 FALLING SPRING ROAD, P.O. BOX 219
CHAMBERSBURG, PENNSYLVANIA 17201
PHONE: 717-263-9111