

# Chris Shive shows top heifer in show

**YORK** — Continuing a season-long winning streak, Chris Shive, Seven Valleys, showed her Champion Angus heifer to Supreme Champion honors during the Open Beef competition here at the York Fair, Saturday.

The Supreme Champion Bull was a Champion Hereford owned by Frank Darcey, Spring Bottom Farm, president of the Pennsylvania Polled Hereford Association, and JV Farm.

Other placings during the competition were:

**SIMMENTAL**

Junior heifer calves - 1. George & Heather Snyder, Spring Grove, 2. Winter Spring Farm, Spring Grove, 3. Winter Spring Farm, 4. George & Heather Snyder.

Junior heifer calves - 1. Millard McCleary, New Freedom.

Late Senior heifer calves - 1. Winter Spring Farm, also Reserve Champion, 2. Millard McCleary.

Early Senior heifer calf - 1. Millard McCleary, also named Champion Heifer Calf, 2. Winter Spring Farm.

Early summer yearling - 1. Winter Spring Farm, Summer Champion

April Junior yearling - 1. Brenda Walter,

Arville, also Reserve Junior Champ, 2. Nancy Townsend, Brodbacks; 3. Jim Townsend, Brodbacks.

March Junior yearling - 1. Brenda Walter, Junior Champion

Reserve Grand Champion Female - Brenda Walter, March Yearling.

Reserve Grand Champion - Brenda Walter, April Yearling.

Cow-calf class - 1. Brenda Walter; 2. Millard McCleary; 3. Winter Spring Farm

Best bred & owned - 1. Winter Spring Farm

**HEREFORD**

Junior heifer calf - 1. JDH Herefords, Dover; 2. Blake McCleary, Biglerville, 3. David Shultz, Mechanicsburg; 4. Jeffrey Golden, Gardners.

Junior heifer calf - 1. Jacqueline Kirshner, Monogonia, also Reserve Champion Heifer Calf

Late senior heifer calf - 1. JP Hauser, Dover, Champion Heifer Calf; 2. Craig Peterson, Abbottstown

Early senior heifer calf - 1. Blake McCleary

Late summer yearling - 1. John Kirshner, Jr.

Early summer yearling - 1. Michael Cummings, Westminster, also Summer Champ, 2. JP Hauser, Reserve Summer Champion; 3. Craig Peterson, 4. Craig Peterson

April Junior yearling - 1. JDH Herefords, Reserve Junior Champion, 2. Spring Bottom Farm, Fairfield, 3. Michael Stull, 4. David Shultz.

March Junior Yearling - 1. Randy Becker, Dover, also Junior Champion, 2. JP Hauser, 3. Bob Livingston, Dover.

Early junior yearlings - 1. Spring Bottom Farm, 2. Laura Tasse; 3. Michael Cummings, 4. David Shultz

Grand Champion Female - Randy Becker, Reserve Grand Champion - JP Hauser

Bred & owned class - 1. JP Hauser; 2. Jacqueline Kirshner; 3. JDH Herefords, 4. David Shultz.

Junior bull calves - 1. Spring Bottom Farm, 2. Dave Shultz

Jr. bull calves - 1. John Kirshner, Jr., 2. David Shultz.

Late senior bull calves - 1. Craig Peterson, Reserve Champion Bull Calf; 2. Craig Peterson

Early senior bull calves - 1. JDH Herefords, Champion Bull Calf

Early summer yearlings - 1. Spring Bottom Farm, Summer Champion

April junior yearling - 1. Spring Bottom Farm, Junior Champion

Senior yearling bull - 1. David Shultz

Summer senior yearling bull - 1. Blake McCleary, Reserve Champion

Two year old bull - 1. Conowago Farms, Champion

Grand Champion Bull - Spring Bottom; April Jr. Yearling, Reserve Champion - Spring Bottom Farm, Summer Champion

Two bulls owned by one exhibitor - 1. Spring Bottom Farm, 2. David Shultz.

Cow-calf class - 1. Spring Bottom Farm, 2. JDH Herefords, 3. Blake McCleary, 4. David Shultz.

**CHAROLAIS**

Early summer yearling heifer - 1. Tim Caldwell, Windsor, also Summer Champion, 2. Doug Caldwell, Reserve Champion

April junior yearling - 1. Christine Davis, Reserve Junior Champion

March junior yearling - 1. Alice Davis, Junior Champion

Grand Champion Female - Alice Davis, Reserve Grand Champion - Christine Davis.

**ANGUS**

Junior heifer calf (After 3/1) - 1. Tammy Eisenhour, Wellsville, 2. Bill Wise, Spring Grove

Junior heifer calves - 1. Double H Farms, Seven Valleys, Champion Heifer calf; 2. Tammy Eisenhour, Reserve Champion Heifer

Early summer yearling - 1. Kathy Wise, Spring Grove, Summer Champion, 2. David Wise, Spring Grove, Reserve, 3. Ralph Dixon, Jr., York, 4. Walter Laird, Dover

April junior yearling - 1. Chris Shive, Seven Valleys, Jr. Champion, 2. Joann Rishel, 3. Erdenheim Farm, 4. Jim Eisenhour

March junior yearling - 1. South Branch Farm, Reserve Junior Champion, 2. Chris Knisley, York, 3. Tammy Eisenhour, 4. Walter Laird

Early Junior yearling - 1. South Branch Farm, 2. Tim Knisley; 3. South Branch Farm; 4. Chris Knisley

Grand Champion Female - Chris Shive, Reserve Grand Champion - South Branch Farm

Bred & owned class - 1. Chris Shive, 2. South Branch Farm, 3. Kathy Wise, 4. South Branch Farm

Junior bull calf - 1. Kathy Wise, Jr. bull calf - 1. South Branch Farm, Champion Bull Calf; 2. Chris Knisley, Reserve

Early summer yearling - 1. David Wise, Summer Champion.

April junior yearling - 1. Paul J. Hoffman, 2. Erdenheim Farm

March junior yearling - 1. South Branch Farm, Jr. Champion, 2. Erdenheim Farm, Reserve Jr. Champion, 3. Paul J. Hoffman

Two year old bull - 1. Erdenheim Farm, Sr. Champion

Grand Champion Bull - South Branch Farm, Jr. Champion, Reserve Grand Champion - Erdenheim Farm, Sr. Champion

Two bulls owned by one exhibitor - 1. South Branch Farm, 2. Erdenheim Farm, 3. Paul J. Hoffman

Get-of-sire - 1. South Branch Farm, 2. Bill Wise

Cow calf class - 1. Tammy Eisenhour, Chris Knisley; 3. Bill Wise, 4. Kathy Wise

**OTHER BREEDS**

Junior heifer calf - 1. Ken-Rose Farm, Oley, Reserve Champion Heifer; 2. Ken-Rose Farm

Late senior heifer calves - 1. Ken-Rose Farm, Champion Heifer Calf

Early summer yearling - 1. Jamie Kohr, York, Summer Champion; 2. Ken-Rose Farm, Reserve Summer Champion

April junior yearling - 1. Beth Holtzinger, Red Lion, 2. Ken-Rose Farm, 3. Ken-Rose Farm, 4. Annette Walter, Arville

March junior yearling - 1. Ken-Rose Farm, Jr. Champion

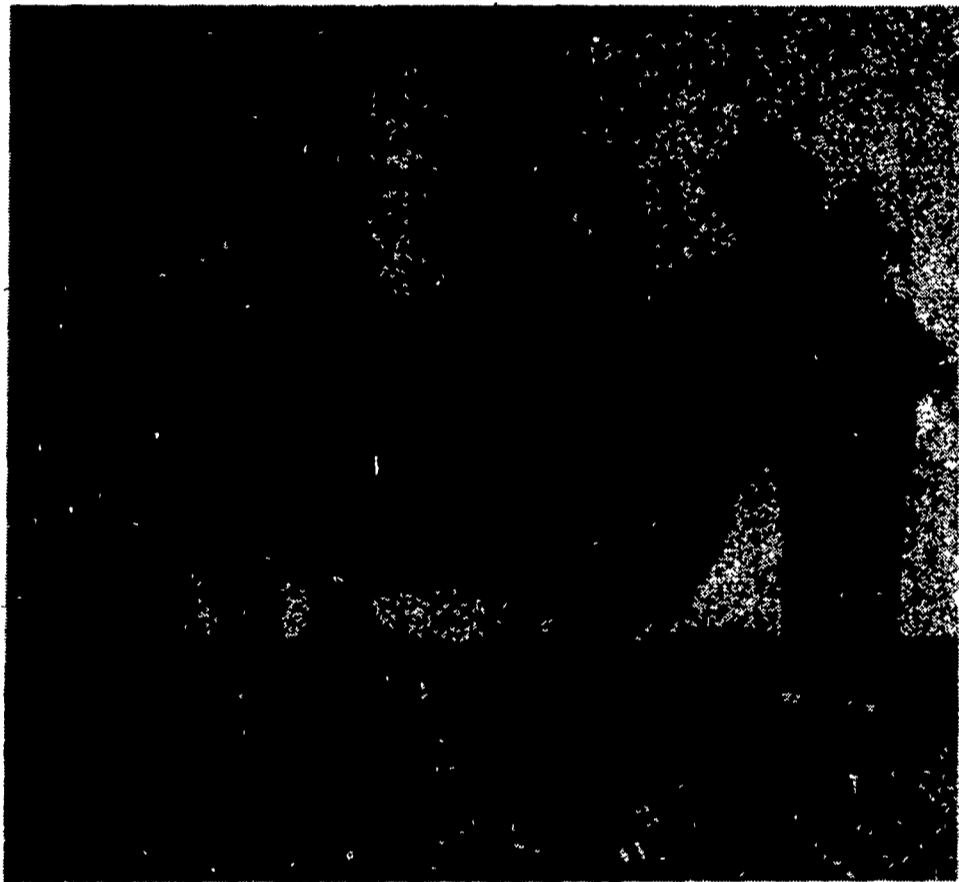
Early junior yearling - 1. Ken-Rose Farm, Reserve Jr. Champion

Grand Champion Female - Jamie Kohr, Summer Champion

Reserve Grand Champion - Ken-Rose Farm, Champion Heifer Calf


Supreme Champion Heifer - Chris Shive, Champion Angus Heifer

Supreme Champion Bull - Spring Bottom Farm, Champion Hereford Bull



Chris Shive is shown with her Supreme Champion Heifer in the open beef competition. The animal also topped the 4-H Angus show. Ron Bolze, center, the judge for the day looks on.

## FREE! "Facts of Life" about sliding doors!



If you're planning to build a new farm building or remodel an old one, you owe it to yourself to know the "Facts of Life" about long-lasting, easy-rolling sliding doors. Free booklet compares round Cannon Ball track to ordinary box track. Tells how famous Cannon Ball track and hangers team-up with new Cannon Grid-15 all-aluminum door grid to bring you years of smooth, quiet, easy sliding door operation.

**CANNON BALL**

SEND FOR FREE BOOKLET OR CALL RIGID-PLY RAFTERS FOR YOUR CLOSEST DEALER

OR CALL RIGID-PLY RAFTERS TO SEE THESE DOORS IN USE 717-866-6581

RICHLAND RD1, Pennsylvania 17087      OAKLAND RD2, Maryland 21550


Name \_\_\_\_\_

Address \_\_\_\_\_


Town \_\_\_\_\_ State \_\_\_\_\_ Zip \_\_\_\_\_

### FISHER AND STOLTZFUS TRAILER SALES

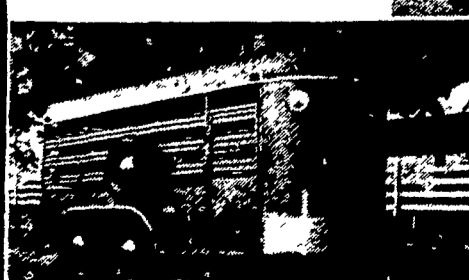

Call 717-768-3832 between 7 a.m. & 9 a.m.  
or call 717-354-0723 after 6 p.m. East of New Holland, Pa.  
Check Our Prices Before You Buy, We Have All Types Of Trailers.



Standard Livestock trailer with metal top sleeper van. Comes in 16,20,24,28 ft. lengths, brakes on all wheels.



16' long by 8' wide body has 40" sides, a grain door in rear, flotation tires for field work or 10,000 lbs., axles with dual wheels, electric hoist carrying capacity 300-350 bu.

### "Farm Alarm II™, MinAlert™, and Farm Sentry™ can keep you out of a heap o' trouble!"

*Joe Higgins*  
National Safety Sheriff




Sheriff Joe is right. No confinement building or farm is safe without these advanced farm monitoring systems. They warn against power failure, fan failure, temperature extremes,

unauthorized entry, fire and theft. Even alert you when strangers approach your farmstead. Better safe than sorry. Stop in and see us for full details.

Available From:

**FARMER BOY PRODUCTS**  
457 E. Main Ave.  
Myerstown, Pa. 17067  
717-866-5692

**S & S DISTRIBUTORS**  
Box 68  
Schickshinny, Pa. 18655

**NORTHEAST AG DIVISIONS INC.**  
208 E. Main Street  
Mt. Joy, PA 17552  
717-653-8001

**THOMAS FARM SYSTEMS, INC.**  
2025 Horseshoe Rd.  
Lancaster, Pa. 17601  
717-299-1706

**CREUTZBURG, INC.**  
Lincoln Hwy East  
Box 7  
Paradise, Pa. 17562  
717-768-7181

**LONGACRE ELECTRICAL SERVICES, INC.**  
602 Main St.  
Bally, Pa. 19503  
215-845-2261

**UMBERGER'S MILL**  
Fontana, Pa. 17042  
717-867-5161

**CUMMINGS & BRICKER**  
Batavia, NY  
716-343-5411

**CUMMINGS & BRICKER**  
Carlisle, PA  
717-249-6720

All AGWAY, INC. Stores