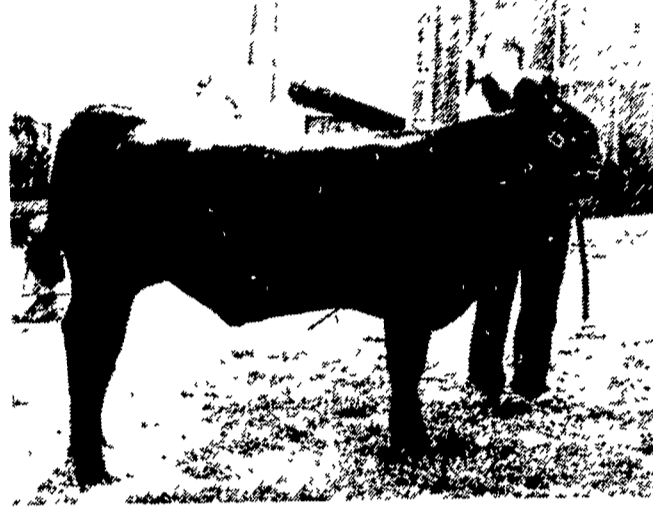


Gilmores

(Continued from Page C36)



Deborah Krause won the champion showman honors in the 13 and under class.



Chris Shive was the champion showman in the 14-16 age division.

- Class 6**
 1. Gorden Smith, reserve grand champion; 2. Diane Krause; 3. Seth Gruber; 4. Seth Gruber; 5. Dorene Eberly.
- Class 7**
 1. Joseph Messick; 2. Robert Miller; 3. Jonathan Kenney; 4. Virgil Baker; 5. Stan Novak.
- HEIFERS**
Class 1
 1. Dwayne Messick.
- Class 2**
 1. Brady Gilmore, grand champion; 2. Eugene Moore; 3. Joseph Messick; 4. Dwayne Messick; 5. Kenianna Rarick.
- Class 3**
 1., 2. Sherri Gilmore, reserve grand champion; 3. Jeff Kading; 4. Kenianna Rarick.
- Class 4**
 1. Robert Miller; 2. Beth Holtzinger; 3. Doug Moore; 4. Kurt Hess; 5. Annette Walter.
- Class 5**
 1. Brady Gilmore; 2. Dalene Myers; 3. Kurt Hess.

Upper Susquehanna

(Continued from Page C35)

OWNER NAME OR NO.	AGE AT CALVING	DAYS IN MILK	LBS. MILK	% FAT	LBS. FAT
Daniel Z Stoltzfus	RH	68 5	84 5	49 0	1 66
Roland Hackman & Son	RH	53 2	90 0	43 0	1 64
John M Stoltzfus	R&GrH	27 0	88.9	46 4	1 64
Dock View Dairy	GrH	111 4	88 7	44 7	1 62
Mervin B Nissley	R/GrH	119 4	94 7	45 0	1 59
Mervin K Stoltzfus	R&GrH	53 2	87 5	47 4	1 59
Ben Martin	R&GrH	30 0	83 4	40 0	1 59
Jonas R Zeiset	R&GrH	41 0	84 9	45 0	1 59
Eugene Spangler	R&GrH	69 8	89 8	42 2	1 58
R Dietrich & Son	R&GrH	23 0	84 9	42 6	1 58
Chris S Stoltzfus	RH	44 4	78 8	44 6	1 58
Kenneth T Shuck	R&GrH	44 5	86 1	42 5	1 56
Ben S Yoder	R&GrH	43 9	80 9	42 7	1 55
Peachy Bros Dairy	R&GrH	49 1	80 0	38 2	1 53
Alvin H Martin	GrH	52 4	85 4	47 2	1 52
L C Gotshall, Jr	R&GrH	30 2	94 5	43 3	1 51
Leory W Martin	R&GrH	31 3	90 4	39 3	1 50
Kore M Yoder	R&GrH	37 9	90 0	40 9	1 48
Daniel Z Stoltzfus	RH	68 0	80 3	43 8	1 48
Leon H Martin	R&GrH	41 6	78 0	39 2	1 47
Mervin B Nissley	R&GrH	118 1	93 6	42 6	1 47
Joe E Miller	R&GrH	57 6	86 9	41 4	1 47
Jerry L Moore	R&GrH	36 9	88 5	42 7	1 44
Mark M Wehr	R&GrH	79 2	78 4	39 6	1 43
Aaron R Zimmerman	R&GrH	38 6	84 6	35 6	1 42
Peach Bros Dairy	R&GrH	47 5	74 8	36 8	1 42
Wilmer E Zook	R&GrH	35 8	77 3	39 7	1 41
L C Gotshall, Jr	R&GrH	29 6	94 3	39 3	1 41
Roger M Shively	R&GrH	24 0	87 5	36 9	1 41
Dietrich Brothers	R&GrH	50 3	91 5	39 2	1 39
Donald B Spangler	R&GrH	54 0	92 0	37 6	1 37
Ben S Yoder	R&GrH	46 2	82 2	38 3	1 35

OWNER NAME OR NO.	AGE AT CALVING	DAYS IN MILK	LBS. MILK	% FAT	LBS. FAT
Montour					
Danville State Hospital					
419	8-3	305	19,312	5 1	993
S 34	5-9	305	20,516	4 0	818
968	4 9	305	18,856	4 5	847
3430	4 10	305	21,357	4 8	1025
947	4-11	302	16,476	4 6	765
103	3-7	305	24,322	3 6	875
129	3-3	305	21,948	3 7	807
Mar-Ja Farm					
Marion 2	8-2	265	17,696	3 9	687
Boss	5-1	305	20,496	4 1	845
Twiggy	3-4	305	17,140	4 7	798
Prisila	3-3	305	17,208	4 1	707
Jeckle	3-3	305	16,490	4 3	713
April	3-4	299	19,095	3 8	732
Sandra	2-2	305	14,993	4 4	666
Clifford A LeVan					
Topsy	6-5	305	14,711	4 4	652
Dusty	5-7	305	17,181	4 0	682
Topper	5-11	305	18,597	3 9	729
Carl R Slater & Son					
Adel	3-3	305	16,689	4 5	749
Daisy	3-3	305	21,716	3 4	728
Northumberland					
Jerry Smith					
Lin	7-0	305	19,466	3 7	717
Stan	4-3	305	18,947	3 6	680
Linda	2-4	305	16,626	4 0	673
Robert Truckenmiller					
13	3-1	305	20,690	4 1	846
36	2-2	305	19,246	3 6	692
Paul Wolfe & Sons					
Cherry	4-3	305	17,342	4 4	755
Betty	6-0	305	16,101	4 3	689
Tina	3-11	305	21,866	3 8	825
Juha	4-0	305	16,326	4 0	655
Leon Epler Farms, Inc					
41B683	8 4	305	16,071	4 2	672
Ernest L Wolfe					
Shiny	3-6	305	20,155	3 9	776
86	8-11	305	16,298	4 0	657
Frank S Prutzman					
Charm	6-6	305	16,914	4 2	707
William R Landis					
Happy	5-1	271	13,923	4 8	675
Ernest Klinger					
71	5-11	305	20,543	3 7	751
78	5-10	305	14,425	4 7	683
5	4 4	294	16,196	4 1	664

(Turn to Page C38)

STOLTZFUS MEAT MARKET

RETAIL MEAT MARKET

CORN FED BEEF

- FRESH CUT BEEF & PORK
- FRESH EGGS RIGHT FROM THE FARM

★ OUR OWN COUNTRY CURED HAMS, BACON AND SWEET BOLOGNA

Orders Taken For Beef Sides; Wrapped And Ready For Your Freezer.

Attention Farmers:
 We Do Custom
 Beef Slaughtering

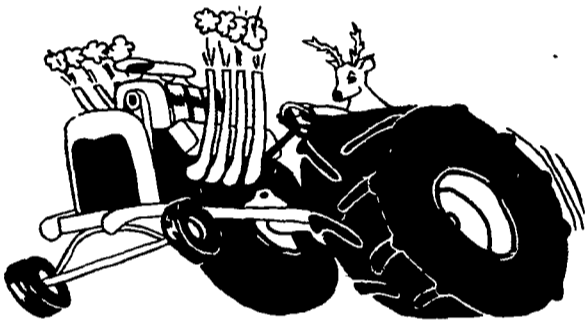
PH: 768-7166

Directions: 1 block east of Intercourse on Rt. 772
 Reg. Hours: Thurs. 9-5; Fri. 9-8; Sat. 8-5

BUCK TRACTOR PULLS

EVERY SATURDAY NIGHT AT 7 P.M.

Featuring...
 8 Classes of Super Stock and Modified Tractors and 4-Wheel Drive Trucks

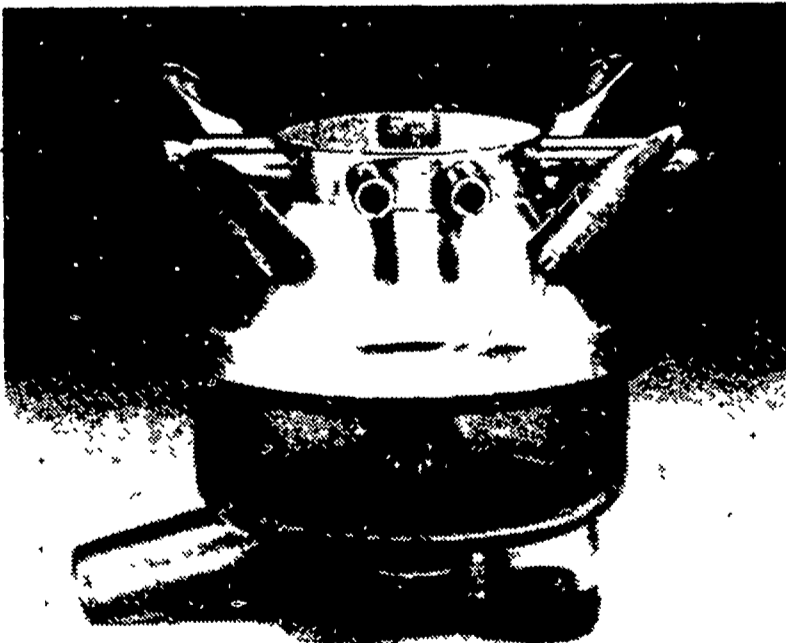


REGULAR ADMISSION ☆ Loc: 10 Miles south of Lancaster on Rt. 272
 Adults - \$4.75
 6 to 12 yrs. - \$1.50
 5 and under - FREE
 ☆ Does not include special events.

SEE YOU AT THE BUCK!

DE LAVAL® SUPER FLO-VU™ CLAW

High Capacity Milker Claw



WE SELL AND INSTALL
 PARLORS & PIPELINES

SERVICE WHEN
 YOU NEED IT!

- Trained Installation and Service Personnel
- Planning Service
- Competitive Price
- Hundreds of Satisfied Users
- Radio Dispatched Trucks

J.B. ZIMMERMAN & SONS

West of Blue Ball, PA on Rt. 23

Phone (717) 354-4955
 Ask For Ralph Stoltzfus

Features and benefits:

- Larger Volume
- Larger milk inlets and outlets
- Improved automatic shut-off
- Wider nipple spread
- Improved air valve design
- Larger air nipples
- Improved thread design
- New rubber bumper
- Manual lock feature
- Clear visibility

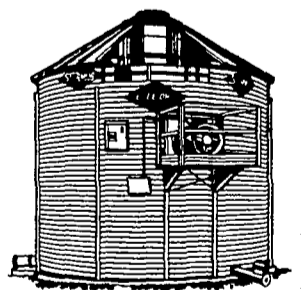
The De Laval Super Flo-Vu Claw can be used with all De Laval and most competitive milkers.

The new Super Flo-Vu Claw has been tested on our research farm and on working farms all over the world. Now it's time for you to try it. See the Super Flo-Vu Claw at your authorized De Laval Dealer.



The De Laval Separator Company
 Agricultural Drv Poughkeepsie, N Y 12602

Dry it. Cool it. Hold it. Profit.



The Stormor EZEE-DRY does it all in one bin.

The Stormor EZEE-DRY with its unique overhead drying floor dries up, to keep your costs Down With 5 diameters and 6 eave heights to choose from, there is a model to match your harvesting demands Lower drying costs, quality grain, and ease of operation are just a few of the benefits you'll find with the EZEE DRY See your Stormor dealer today for complete details and a free, on the farm estimate



NEW & USED
 TRANSPORT AUGERS
 IN STOCK

HENRY FORMAN

Box 96, R.D. 1, Turbotville, Pa. 17772
 Ph: 717-649-5579