

FARM EQUIPMENT



New John Deere Model 143 Loader with 60" hyd bucket Frits JD utility trailers \$1500
Used John Deere 3800 forage harvester, no interest until May 1, 1981 wide or narrow 2 row head
John Deere 35 Harvester w/1 or 2 row head
New John Deere Model 6500 Blower, \$1750

EDWARDS & COX

RD #1
Orford, Pa 19363
Phone 215-932-2929



NEW EQUIPMENT WHITE TRACTORS
2-105 Demo, 20.8x38, Air 8700 Combine
9700 Combine, (Axial)

NEW HARVESTERS
Fox 6654 SP
Fox 3310
NI 708 Uni
NI 709 Uni
Hesston 7650 Side Dumps
2000-100 Pull Type
2000-150 Pull Type
Farmhand Recutter Blower

* Artway Dion Wagons
* McCurdy Bin Wagons
* Speedy Corn Cribbs
* 324 N.I. Picker at old price

USED EQUIPMENT
7600 Field Queen 700 hrs.

FQ Side Dump Wagon
Oliver 1855 Tractor
Oliver 1850 Tractor
Oliver 77 Tractor
IH 460 Tractor
8C & 12C Hydromac Skid Loaders
White 5400 6R Planter
7' Brady Chisel Plow
Athens 9' Chisel Plow
Oliver 5-16" Plow
Fox 2300 Harvester w/Snapper Head
Fox 3000 Harvester
Hesston 2000-150, 3R Harvester
14' Brady Shredder-Windrower
JD 216 Fg. Wagon
Brady 12' Shredder
Bush Hog 14' Rotary Mower
JD 237 Mounted Picker
NI 324 2RW Picker
IH 715 Combine, 13' header, 3 row N Corn Head

NI 710 Combine
IH 56 Blower
Fox Blower
JD 12' Cultmulcher
Artsway 750 Silo-Mix
NI 730 4-Row Head
NI 711 Head
NI 713 Head
Kools KB2000 Recutter
NI 729 Sheller
Hawk Bilt 180 Spreader
Starline 3200 gal Super Tanker w/chisel injector
Hesston Stack Hand 10
Short Block GM 478 for 705 Uni

Better-Bilt Hi-pressure Vac. Pump

STOLTZFUS FARM SERVICE

Cochranville, Pa.
215-593-2407

FARM EQUIPMENT

**HYDRAULIC REPAIRS
CYLINDERS • JACKS
PUMPS • CAB JACKS**

BEARTOWN HYDRAULICS
New and Used Equipment
Narvon, PA
Rt. 322 Midway
between Honey Brook & Blue Ball
Phone 717-354-5649

FARM EQUIPMENT

FARM EQUIPMENT

**HEAVY DUTY AG.
FLOTATION WHEELS**

without tires
15" dia. x 6" wide 5 hole hub @ \$19.85
15" dia. x 6" wide 6 hole hub @ \$21.35
15" dia. x 8" wide 6 hole hub @ \$25.75
15" dia. x 10" wide 6 hole hub @ \$30.00
20" dia. x 6" wide 6 hole hub for truck tires @ \$35.00

Ask about tractor wheels and duals.
Dealer discounts available.

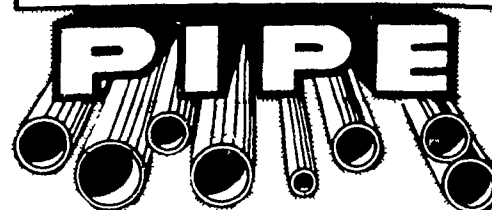
WEAVER'S FARM SERVICE

RD #5 Box 177-B Shippensburg, Pa 17257
Off Rt 533 midway between Shippensburg and Newville along Duncan Road

FARM EQUIPMENT

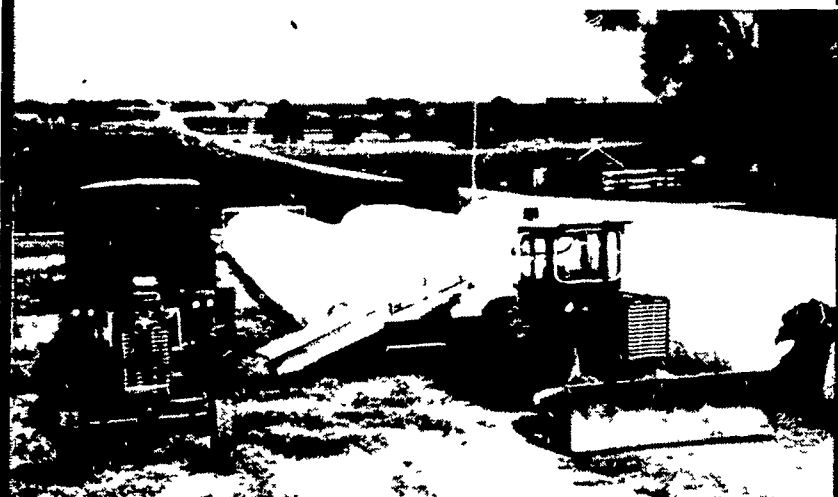
H. SCHWARTZ & SONS, INC.

NOW SERVING THE STATE OF DELAWARE DIRECTLY FROM WILMINGTON!



NEW, USED and RECONDITIONED PIPE
STANDARD EXTRA & DOUBLE EXTRA HEAVY ALL SCHEDULES ALL TYPES FABRICATION THREADING CUTTING - WELDING
121 SO. MARKET ST. - WILMINGTON 19801
302-656-0276 or 215-DE1-4240

AG-BAG



**THE AFFORDABLE SYSTEM
DESIGNED FOR THE 80's
HIGH MOISTURE STORAGE
WHEN & WHERE YOU WANT IT**

FEATURES

- ALL HYDRAULIC OPERATION
- EASILY TRANSPORTABLE
- UNLIMITED SEALED STORAGE

**STRETCH YOUR FORAGE
DOLLAR - THROUGH
PREVENTION OF
SHRINKAGE
AND SPOilage**

Exclusive Dealer For
Pennsylvania, New Jersey, Maryland
Delaware, Virginia, West Virginia

Note: We Need Part Time & Full Time Salesmen for These Areas



AG-BAG CORPORATION

AG-BAG DEMONSTRATION

MONDAY, SEPTEMBER 22, 1980
AT THE FARM OF RALPH HOOVER
RD#2, PORT ROYAL, PA.
717-527-4865

Bank Financing - Short and Long Term Leasing Available.

FIELD QUEEN
FORAGE HARVESTERS

**SALE OR LEASING
ON ALL NEW EQUIPMENT**

HESSTON
FARM EQUIPMENT

"SPECIAL"
FOX SUPER D w/3 ROW NARROW CORN HEAD,
HAY PICKUP AND SNAPPER HEAD
\$14,900.00

GOOD USED EQUIPMENT

- | | | |
|------------------------------------|--|------------------------------|
| (2) Super D Fox w/corn & hay heads | White 4R Aire Planter | Hesston 1520 Slurry Spreader |
| NH 818 SP w/corn head | Hesston 110 SP win drower excep tional cond must see | Case 655 SP Win drower |
| (2) Hyd side Dump Wagons | Hesston 1520 Slurry Spreader w/loading impeller 1 yr old | NH 850 Round Baler |
| (2) Forage Dumping Stations | | MM G1000 Tractor Ex Cond |

FARMERS EQUIPMENT EXCHANGE INC.

We Want To Be YOUR Farm Equip. Co.
1188 Enterprise Road/East Pottersburg, PA 17520
Lancaster County

Telephone 717-569-8756 717-392-7795

- | | | |
|---|--|---|
| Sales Frank Walters
717-733-3665 (Res) | Sales Ralph Benner
717-786-1384 | Sales Dennis Shenk
717-872-8376 |
| Sales Bob McElroy | Sales Robert Kreider
717-569-1011 (Res) | Parts & Service
Frank Brosemer
717-859-2775 (Res) |
| Sales Skip Geiter
717-397-6306 | Sales Bud Simpson
Palm Pa | |
| Sales Phil Leininger
215-267-7876 | | |

**INTERNATIONAL
AGRICULTURAL
EQUIPMENT**

PARTS SPECIAL THRU SEPTEMBER 30

Plow Shares	List	Sale	Savings
463236R1	\$11.86	\$ 8.91	\$ 2.95
463239R2	7.74	5.81	1.93
463240R2	8.04	6.04	2.00
463251R1	11.86	8.91	2.95
463252R1	11.86	8.91	2.95
463253R1	11.93	8.96	2.97
Shins			
522325R1	10.21	7.67	2.54

NEW EQUIPMENT SPECIALS

Kewanee 36' flight elevator w/corn hopper, \$1980
Kewanee 41' 8" auger elevator w/PTO drive, \$1675

USED TRACTORS

- | | |
|----------------------------------|--------------|
| IH 806 D, recond | 10,500 |
| Farmall 350 w/loader | 2,100 |
| Gehl 2500 uni loader w/3 buckets | 3,950, 3,600 |
| F-460 G, engine good needs TA | 1,975 |
| Farmall 300 | 1,750 |
| Farmall M | 1,350 |
| Farmall M | 1,500 |
| Farmall 300 gas | as is 1,100 |
| Farmall H | 800 |

USED SPREADERS & MISCELLANEOUS

- | | |
|---------------------------|-----------|
| IH 155 Spreader | 800 |
| Starline 710 tub Spreader | 750 |
| Ford 170 bu Spreader | 750 |
| Hawk Bilt 257 Tandem axle | 2,350 |
| Hawk Bilt 207 | as is 250 |
| Hawk Bilt 155 | as is 300 |
| Grove 7' blade | 150 |

PLOWS & TILLAGE

- | | |
|----------------------------|-------|
| IH 540 4-16" plow, semi mt | 1,250 |
| IH 540 4x14 plow | 900 |
| IH 531 3-14" | 550 |
| MF 3 pt 10' disc | 450 |
| MF 520 14' disc | 1,350 |
| JD 12' drag harrow, nice | 450 |
| JD 12' harrow | 175 |
| IH 60 3-14" rope trip | 300 |
| JD Model KBA 10' disc | 450 |

USED HAY EQUIPMENT

- | | |
|-----------------------------------|--------------|
| NH 469 9' haybine | 2,250 |
| NH 479 9' haybine as is | 1,850 |
| (2) IH 990 9' mower conditioner | choice 2,600 |
| Hesston PT10 9' mower conditioner | 1,950 |
| IH 120 7' mower, 3 pt | 650 |
| Case 7' mower, 3 pt | 175 |
| IH 27 baler w/thrower | 1,875 |
| IH 430 baler w/thrower | 3,850 |
| IH 47 baler w/thrower | 2,250 |
| IH 420 baler w/thrower | 2,150 |

USED CORN PICKERS

- | | |
|---------------------------|----------------|
| NI 7 corn picker, 1-row | 600 |
| IH 6A cornpicker 2-row | 1,200 |
| IH 1 PR corn picker 1-row | 600 |
| IH 234 w/sheller | Priced to Sell |
| NI 731 4-row wide head | Priced to Sell |
| IH Sheller unit for 234 | Priced to Sell |

USED FORAGE EQUIPMENT

- | | |
|--|-------|
| JD 25 1 R harvester, mtd | 1,400 |
| IH 650 harv, 2 hds | 2,000 |
| Fox 546 harv w/1-row & pickup | 1,650 |
| IH 350 harvester w/1-row & pickup | 1,350 |
| NH 818 harv, 2 hds as is | 650 |
| Gehl pickup hd. for CB600400 head for CB 600 | 600 |
| NH forage box w/chassis 1,500 | |
| IH 61 forage box w/chassis | 1,800 |
| Hopper for 650 harv | 95 |
| IH 5 Flail chopper | 350 |

USED COMBINES

- | | |
|---------------------------------|-------|
| Oliver 525 w/11' plat, 2-row hd | 7,000 |
| MH 82 w/13' plat | 2,600 |
| MH 92 | 2,600 |
| AC C w/12' plat | 8,500 |

MIFFLINBURG FARM SUPPLY, INC.

East Chestnut St., Mifflinburg, PA 17844
Phone: (717) 966-3114