

Public Sales Register

Closing Date - Monday, 5:00 P.M.
of each week's publication

SAT SEPT 20 - 12 30 P.M.
Public Sale of Farm Machinery, Cattle, Tools, Household and 43 Acre Farm Take Route 34 approximately 4 miles North of Gettysburg, Pa. turn right or East onto Legislative Route 01007 (at VanDyke's corner) continue 1/2 mile to sale site Calvin D. Manahan Estate C. David Redding, Auctioneer

SAT SEPT 20 - 9 00 A.M.
Public Sale of Steam Engines, Saw Mill Parts, Antiques, Automobile, and Household Goods Located at 867 Broad Street, Chambersburg, Franklin Co., Pa. Mrs. John D. Farmer, Owner Edgar J. Stull, Auctioneer

SAT SEPT 20 - 9 30 A.M.
Public Sale of Valuable Antiques, Guns, Rare Civil War Items located Southwest of Elizabethtown, Pa. along Bossler Road From Rt 283

take Rheems Exit, go south to Rt 230 at Farm Diner, take Colebrook Road to Bossler Road Look for Signs Sale by Al and Bonnie Sorace C.H. and Bob Wolgemuth, Auctioneers

SAT SEPT 20 - 10 00 A.M.
Eastern Lancaster Co. All Day Sertoma Auction of Household Goods, Antiques, Groceries, Tools Located at Locust Grove Mennonite School, along Rt 340 Donations and Consignments accepted Ron Funk Auctioneer

SAT SEPT 20 - Show 10 00 A.M. Sale 1 30 P.M. Dairy Show and Sale at G.M. Livestock Market, Duncansville, PA (Take Rt 220 north from Bedford Exit off PA Turnpike)

SAT SEPT 20 - 10 A.M. Public Sale of Gun Collection Located at 4375 County Line Rd., Col-

mar, Pa Bucks Co 1 mile South of Line Lexington Bob Covelens Auctioneer

SAT SEPT 20 - 1 00 P.M.
Public Sale of Real Estate Located approx 2 miles east of Collomsville, PA on Rt 44, Bob, Chuck and Rich Roan, Inc Auctioneers

SAT SEPT 20 - 12 30 P.M.
Penna State Jersey Sale at the Guernsey Sale Pavilion Rt 30 east of Lancaster, PA

SEPT 22 26 - Pennsylvania All-American Dairy Show, Farm Show Building, Harrisburg, PA
MON SEPT 22 - 11 00 A.M.
Public Auction of Farm

Machinery and Household Goods Located in Kentmore Park, take Rt 213 South from Galena, Md to Rt 444 before Kennedyville, Md Dan Quinn, Jr - Owner H Rudnick & Sons, Inc - Auctioneers

TUES SEPT 23 - 12 30 P.M.
Public Sale of Home Raised Holstein Dairy Cattle, Milk Cans, Dairy Supplies Located 15 miles north of Danville, PA, 1 1/2 miles NW of Bloomsburg, 1 1/2 miles west of White Hall along Exchange - White Hall Rt 44 Highway, Montour Co Benuel S. and Annie Stoltzfus Owners Max Fraley and Son Auctioneers

PUBLIC SALE

OF 119 ACRE STEER & HOG FARM
FRIDAY, OCTOBER 3

2:00 P.M.

Located between Millmont and Gleniron, 8 miles west of Mifflinburg, 3 miles south of Hartleton, Hartley Twp., Union County, Pa.

119 ACRE LIMESTONE FARM

Consisting of 100 acres in high state of cultivation, balance in pasture with stream. Farm borders the Penn's Creek and has eight tenth mile of road frontage.

Erected thereon the following improvements:
2 1/2 STORY EIGHT ROOM FRAME FARM DWELLING

with asbestos siding. Storm windows. Oil hot water baseboard heating system, one year old. Shade trees. Large lawn. Smoke house. Never failing well with pressure system.

44'x84' FRAME BANK STEER BARN

with cement feedlot for app. 125 head

20'x68' Star Poured Cement Silo with unloader and 80' bunk feeder, built 1971.

26'x100' 24 crate farrowing and nursing hog house, one year old. 30'x75' hog finishing house with manure pit.

30'x48' Equipment Shed, built 1975. 16'x16' Round wire corn crib. Butler 1700 bu. grain bin.

OPEN HOUSE: Saturdays, Sept. 20-27 all day or call 717-922-1410 for appointment.

Terms: 10% down day of sale, balance on or before December 31, 1980.

Sale by
**IVAN M. AND
ARLENE W. MARTIN**

Atty., Thomas Boop
Aucts.
Nevin Z. Martin
Lewis B. Groff

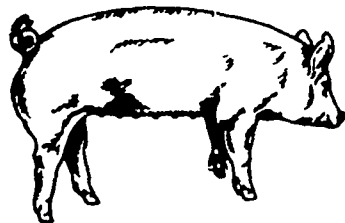
Not Responsible for Accidents

MINI ACRES

3RD PUREBRED YORKSHIRE
PRODUCTION SALE
FRIDAY, SEPTEMBER 26

AT 6:30 P.M.

AT LEBANON FAIR GROUNDS
Cornwall & Evergreen Rds., 1 1/2 miles south of Lebanon, Pa.



SELLING:

60 — HEAD — 60

BRED GILTS - OPEN GILTS - SERVICE BOARS
Footnote: Our Offering Also Includes 20 Feeder Pigs.

Our New Boar From The ARNOLDS In Lebanon, Introducing BARON, A Typey Boar.

Some Gilts bred to TOP NOTCH

A new bloodline out of the Ohio Michaels' herd.
An exceptional boar

EXCELLENT BLOODLINES BEING OFFERED.

Attending This Sale Will Be Worth Your While.

FREE LUNCH

AUCT. - Our dear friend Ralph W. Zettlemoyer
AYC FIELD MAN - Dan Frobose

RINGMAN - Harry Gruber

Russell Henry

MAIL FOR CATALOG TO: EDWARD H. OSWALD

R.D. #2 Box 396
Slatington, Pa. 18080
Tele. — (215) 767-4789
Sale Barn - (717) 274-9953

BROOKS END AND PAR-KAY FARM

FIFTY-EIGHTH ANNUAL FALL SALE

FRIDAY, OCTOBER 3

1:00 P.M.

At the Farm • Beavertown, Pa.

**260 head of SCOTCH & IRISH
and other foreign bloodlines**

• Many Imported from Scotland

YORKSHIRE — LANDRACE

Born and raised on our farms from our parent imported stock.

100 ★ BRED GILTS - most of which carry Scotch or Foreign Blood Litters.

50 ★ YORKSHIRE - Many carry Scotch litters.

50 ★ LANDRACE - All carry Scotch or Foreign Blood Litters.

50 ★ BOARS

30 ★ YORKSHIRE - New Scotch Bloodlines as well as Irish and American Bloodlines.

20 ★ LANDRACE - All 100% SCOTCH, IRISH or other foreign blood.

100 ★ Commercial Open Gilts - Mostly Irish & Scotch blood. Scan-O-Probe Loin Eye & Back fat figures. Production tested - Certified Meat Proven & Show Ring Champion Stock. Certified brucellosis free & pseudorabies free. Health charts sale day for entry into any state.

1980 SETS NEW RECORDS

NEW FIRST PLACE TEST STATION WINNERS

Our breeding wins at both Penna. and Delaware Test Stations Richard Miller, York County was the Penna. winner with 4 boars sired by Alpine

Leon Arnold, Lebanon County, was the Delaware Station winner. His boars were sired by Explorer. Each of these sires were purchased from Brooks End Farm. Feed conversion on the Alpine pigs was 2.4 Feed conversion on the Explorer pigs was 2.2. A perfect example of how it works for others when they buy tested stock from us.



IRISH BOARS and GILTS of this great Dam will sell. Greenback 3044, one of our foundation Irish Yorkshire Sows.

Owners:

**RENO & PARK THOMAS
& MARK STEHR**

RENO PARK MARK
717-658-5821 717-658-6544 717-658-7007
717-658-7304 717-658-6702

Catalogs Available

Mark Pickle, Wingate, IN - Auct.



RUNNYMEDE FARM PUBLIC AUCTION

Complete Liquidation Dispersal
Valuable Real Estate:

Lancaster County:

**100 Acre Hog and Steer Farm
Full Line of Modern Farm Machinery
61 Acres of Standing Field Corn
300 Ton Corn Silage**

FRIDAY, SEPTEMBER 26

Starting 9:00 A.M.

Real Estate to be sold at 10:00 A.M.

Located Along: Breneman Road, 4 1/2 miles southwest of Manheim, PA. 2 Miles North of Manheim, Mount Joy Interchange off Rte. 283.

Real Estate Features:

House — 2 1/2 story frame house with large concrete porch; dining and living rooms with hardwood floors, large open fireplace, modern kitchen, study or den, open staircase, 4 large bedrooms with wide pine boards, oil baseboard heat, full bath, full attic, full basement. All rooms are nicely decorated.

Nebraska Modified Open Front Hog Building — 27'x320' building for growing and finishing hogs. This facility is 1 1/2 years old and is fully insulated. 2 10 Ton Fed Bins 2 12 ton feed bins. Complete with large office and 6 month manure storage pit under slates plus outside earth and bank storage.

Barn — Frame bank barn 50'x115', slate roof, 4 barn floors, 2 large hay mows. 24'x100' Star silo with Jamesway Unloader, 12'x50' Title silo with unloader. This setup is situated to feed and handle 230 head of steers with 6 month manure storage pit.

Other Buildings: 2 car garage, 2 large wire corn cribs, 14'x30' open front livestock building. Approx. 1655' road frontage along Breneman Road.

Conditions of Sale: 10% down sale day, balance by December 12, 1980. There is an assumable FHA mortgage to qualified buyers.

If looking for outstanding farm in high state of cultivation, ready to move into and farm, don't miss this farm.

To inspect farm, call 717-665-7071

Attorneys: Alspach and Ryder

Henry S. Kenderdine

To Follow Selling of Real Estate

61 Acres of standing corn, 300 ton corn silage

Full line of modern farm machinery

10-15 tons mixed hay

4 Farm Tractors

4020 John Deere Diesel Tractor wide front end, side console, large tires w/weights

2520 John Deere diesel tractor wide front end

2020 John Deere gas tractor wide front end

John Deere H Tractor with cultivators

5' Model M5 Woods Dixie cutter, J.D. Model 110 chuck wagon, 36' New Holland Farm Ec elevator, Gehl grinder-mixer 120 bushel, portable cattle scales w/head gate w/Paul scales, McCurdy gravity bin wagon, Model 327 New Idea Drawn 2 row corn picker w/12 rolling husking bed, 9' Brady heavy duty chisel plow, 8' Ontario grain drill w7" spacings, J.D. Model 110 chuck wagon, J.D. hay wagon w/high sides, Win power hay wagon, 26' bale elevator, Model 3200 12' Brady field cultivator w/3 pt., Allis Chalmers 4 row no title corn planter w/auger, F845 J.D. 2 bottom 2 way plow, 400 gal. portable trailer sprayer w/35' spraying blooms, J.D. 3 PT 7' 9W grass mower, New Holland Model 970 spready w/dual axel w/tailgate 350 bushel, J.D. 10' fertilizer spreader, 14' McCurdy corn drag elevator, J.D. #48 loader w/6' bucket, J.D. 8' KBA transport disc, 10' brilliant cultipacker, 8' 3 PT Little Rhino scraper, #271 New Holland baler w/kicker, Fidelity elec. 25KVA portable generator P.T.O. on trailer, Model 2600 gal. Better-Bilt Augermatic tank spreader with dual wheels, 800 gal. per minute Better-Bilt manure pump on trailer, 50'4" suction hose, 4" loading stand, J.D. hay rake, J.D. spring harrow, 2 hyd. cylinders, 4" plastic pipe, barn fan, iron troughs, 2 hole corn sheller, snow fence, thousand of board feed of lumber, old barn siding, planks, etc. New Holland farm wagon, 2-3000 gal. tanks, feed carts, platform scales, misc. gates, 3-110 galv. water tanks, 2 fuel tanks, one with diesel fuel, 1/2"x4"x10" welding table, 2 1/2"x6 1/2" steel table, 45 gal. SAE-30 Valvoline Oil, fence posts, tons of hog and cattle manure, large steel feed bin, many other items.

All Farm Equipment in Excellent Condition

Food served:

Sale by:

**RUNNYMEDE FARM
JOHN A. HACKMAN
MARGARET S. HACKMAN
717-665-7071**

Sale Conducted by the:

J. Omar Landis Auction Service

J. Omar Landis and Jay M. Witman

Box 501, Ephrata, PA

717-733-7917 or 717-665-5735

Special Note: Terms of this Public Auction are cash, certified check, bank letter of credit. Auction firm will only accept personal checks if advanced credit is given prior to auction.