

## South Mountain

(Continued from Page D22)



The Grand Champion Rambouillet ewe was shown by Bob Leib. She was the first place Spring lamb.

### ESTATE SALE

FRI. EVE., SEPTEMBER 26

6:00 P.M.

Located 3 miles south east of Honey Grove, along route 850. Sale sign at Honey Grove.

**SAWMILL SELLING - 6:00 P.M.**

00 Frick Mill, 20 ft carriage, 56" saw, good cond; 1947 mod 403-4 AMM gas power unit; 10" endless belt.

**MACHINERY, TRUCK & CAR**

**7:00 P.M.**

Massey Ferguson, 50 tractor, Oliver cat w/saw buck; 1937 Dodge flat bed truck, good cond, antique license

This only partial listing

**TERMS: CASH OR GOOD CHECK. LUNCH.**

**LONG BROS., AUCTS.**

717-527-4458

### PUBLIC SALE

6:30 P.M.

FRIDAY, SEPTEMBER 19

The undersigned will offer for sale valuable items at Varner's Sales and Service, Oakland Mills, PA.

**Selling:**

JD Spitfire snowmobile (like new); Skidoo snowmobile; 8 ft. picnic table (new); 24" marble top vanity; new auto. dishwasher; auto. repair ramps; new electric fence; 6 new picnic tables; new 5'11" x 8'3" shag carpet; hedge trimmers; 50 lb. laundry detergent; several cases motor oil; girls bicycle; walk behind rototiller; several chain saws, glass door for fireplace; fireplace insert w/blower; new 12 volt 4 yr. warranty battery; new 1/3 elec. hp. motor; 1 pr. tires, like new, reg. tread; used wheels; 1 pr. winter tread tires; 6 bundles slab wood; 4 forage wagon loads sawdust; firewood by the pile; wood splitting mill; 50' elec. cord; Simoniz wax, 2 sets tire chain tightners; 4 pr. front fender mud guards; fire extinguisher; bag dog food.

**ANTIQUÉ 12 GAUGE SHOT GUN**

Maytag wringer washer; several sheets marlite; RCA console stereo; 25 lb. lawn fertilizer; 2 pkg. blank cassettes; roll new plastic pipe; 31 pc. ovenware set; other cookware & utensils; Hamburg makers; cake pan; country cured ham; apples by the 1/2 bu; baked goods - cakes, pies, etc. Toys, many, many items too numerous to mention. This is a clean sale. All items are donated, many are new.

Sponsored by,

**CEDAR GROVE MEN'S FELLOWSHIP**

ALL PROCEEDS GO TO BUY CATTLE FOR THE MEAT CANING PROJECT FOR WORLD HUNGER.

Owner & Auctioneer not responsible for accidents.

Auctioneer - William Landis

At The Same Time The Youth Are Offering Themselves - 5 Hr Labor SLAVE AUCTION BLOCK

Who: The Youth of Cedar Grove - Christ Crusaders. The Qualifications: Described individually as auctions

Time: 8:00 P.M.

Purpose: Raise funds for Volunteer Service Trip to Pharr, Texas, July 1981.

Buy a Slave for an odd job.

## How stress hurts corn

LITITZ - Although modern corn hybrids are more drought tolerant than those available several years ago, 1980 proved that heat and dry weather can still be serious yield reducing factors.

There are several ways that stress hurts corn. Some are discussed here.

**One is reduced nutrient availability.**

Plants just can't extract sufficient food from a dry soil regardless of how much there is. Since soils dry from the top, nutrients at lower soil levels remain available longer, provided the roots reach deep enough to feed there.

This is a reason for en-

couraging deep placement of at least part of the fertilizer; also for planting early and following tillage practices that conserve moisture and encourage deep rooting when plants are young.

**A second is retarded plant growth functions.**

Water is essential for the transport of nutrients, manufactured products (carbohydrates, etc.), and waste inside the plant. Moisture deficit slows these vital activities and causes wilting, which constricts passageways needed for movement of materials within a plant.

High temperatures increase water demand in plants.

**Time between pollen shed and silking can be extended.**

Under favorable conditions, corn tassels start shedding pollen one to three days before silks emerge on the same plant and pollen continues to fall for three or four days after silking.

Under stress, the period of pollen production may be shortened. Also, stress delays silk emergence and, if severe enough, prevents it entirely. Pollen shed may be completed by the time silking occurs. Ears with poor or no seed set are the result.

Stress, especially heat, may prevent germination of a pollen grain, even if it reaches a silk.

Or, it may stop growth of the pollen tube somewhere along the length of the silk.

In either case, fertilization is not accomplished, and no kernel can develop at that particular spot. This results in scattered kernels or empty cobs.

Full development of kernels requires that large quantities of sugars, amino acids, and other products of photosynthesis be transported from leaves to grain for storage as starch,

protein, etc.

This means any deficiencies in either nutrition or movement of materials within the plant will retard kernel development - this results in small, poorly developed, light-weight grain.

Prolonged drought reduces overall vigor of plants, regardless of how strong and stress tolerant they are inherently.

Continued stress eventually weakens individual plants so that invasion by bacteria, fungi, or other disease-producing organisms may occur. When in this condition, plants can't ward off diseases. This permits build-up of organisms causing such diseases as smut, stalk rot, and ear rot.

It should be pointed out that stalk rot is more likely to be a problem when drought stress is followed by warm, wet weather, also wind storms intensify the lodging attributed to stalk rot.

**BUTTER & EGGS**

**Martin Limestone**

**Apply lime early**

Take advantage of early results by liming in the late Summer and Fall. Get ground ready for the first Spring shoots by allowing the lime all winter to condition the soil.

**MARTIN LIMESTONE, INC.**

Blue Ball, Pa 354 4125  
Gap, Pa 442 4148

### PUBLIC SALE OF REAL ESTATE 60 ACRE FARM TUESDAY, OCTOBER 14

2:00 P.M.

Located in Providence Twp., 13 miles south of Lancaster off 272 at Rawlinsville Ave. or 1 mile north of Buck, between Truce & New Providence along Hopkins Mill Rd.

2½ story brick home with slate roof, 2 porches, 1st floor kitchen, living room, dining room, and powder room. 2nd floor kitchen upstairs, 4 bedroom with closets, full bath, large entrance hall and attic, hot air furnace and hot water heater, good well and nice lawn.

Barn - large barn with tin roof, milk house and silo. Also holds 5 acres of tobacco, stripping room and cellar. Corn barn, hog barn, implement shed, storage shed and 3 car garage.

Land - 60 acres of land more or less, approx. 1500' road frontage.

Terms - 10% down day of sale, balance upon settlement. Inspection Sat., Sept. 27, Oct. 4 10-4.

Real Estate will be offered at 2:00 P.M.

Sale by,

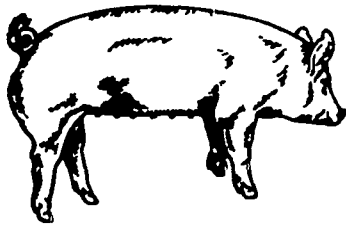
**IVAN J. & ROSA F. CLARK**

K. L. Shirk Jr., Atty.

**KREIDER & KLINE AUCTION SERVICE**

Phone (717) 786-3394

### CALVIN H. LAZARUS & SONS 6TH PRODUCTION HOG SALE DUROC, YORKSHIRE, SPOTTED



FRIDAY, SEPTEMBER 19

6:00 P.M.

Sale held at the farm of Calvin H. Lazarus & Sons, 4290 Bridge Street, Whitehall, PA., Lehigh County. 4 miles North of Allentown on Route 145 to Columbia Street, make a left, second black top to right, 1st farm on left.

**Selling:**

19 Yorkshire Bred Bilgs  
17 Spot Bred Gilts  
11 Duroc Bred Gilts  
12 Yorkshire Boars  
12 Spotted Boars  
12 Duroc Boars  
10 Yorkshire Open Gilts  
10 Spotted Open Gilts  
10 Duroc Open Gilts  
4 Duroc-Spot Cross Open Gilts  
3 York-Hamp Cross Open Gilts  
6 Pig Guarantee on bred gilts  
All Stock guaranteed to be breeders  
Brucellosis Free herd #26  
Pseudorabies Free herd #18

For Catalog Write or Call

**CALVIN H. LAZARUS & SONS**  
4290 Bridge Street Whitehall PA 18052  
215 799 3375  
Auctioneer Ralph W. Zettlemoyer

**LE-ANN YORKSHIRE FARM** wishes to thank the buyer of our highest indexing Delaware Test Station Boar which was sold for \$1000 to David Glass Birdsboro, Pa.

We also wish to thank the contending bidder, Clyde Betts & Son Milton, Delaware

This top boar had daily gain of 2.57 and feed efficiency of 2.24.

Our boars in the 1980 Penn State Test Station had 2.49 feed efficiency, 68 back fat (leanest pen), 152 days to 230 lbs Sire - BV7 Charlie Hustle. At the Delaware Test Station, the pen feed efficiency was 2.24, the back fat 73 Grand Sire-BV7 Charlie Hustle.

We have 3 boars ready for immediate service \$275 and up 10 boars for late September and October 40 boars at our November 7 Production Sale

Write or Call

**Leon Arnold**  
RD 7 Box 705  
Lebanon, PA 17042  
717-273-5880