

Need . . .

**HAY - STRAW - EAR CORN
PEANUT HULLS**

Buy Now and Save!

More and more farmers are buying from us for better value and all around satisfaction.

DELIVERED — ANY QUANTITY
Phone Area Code 717-687-7631

ESBENSHADE TURKEY FARM
PARADISE, PA.

**Simmental sire summary
available soon**

BOZEMAN, MT. — The 1980-81 edition of the National Simmental Sire Summary is expected to roll off the presses in early November, according to Executive Secretary Earl B. Peterson of the American Simmental Association.

"The cut-off for data collection was the first week in August," Peterson said. "We expect to have the new Sire Summary in the hands

of our membership in ample time for them to formulate their breeding season plans."

"Because we are collecting more data, and because additional bulls are becoming eligible for listing in the Sire Summary, we have made some format changes this year," Peterson explained. "We think that the new format will encourage even greater

use of this publication."

The Sire Summary, which was the first breed-wide sire analysis in the entire beef industry, emphasizes progeny performance and index rankings for fourteen economic traits. Every purebred bull is evaluated but only a small percentage of these are recognized as trait leaders. Performance data is a mandatory requirement for ASA registration.

The new NSSS contains 411,341 performance records from 38,315 management units...an increase or more than 15% from the previous year.

To be eligible, a bull must have a minimum of twenty reported progeny that have been compared to a reference sire in at least two different management units

or herds. There are 11,830 purebred bulls in the ASA Herdbook, and 1,038 have the required number of records to qualify for NSSS inclusion.

"ASA performance measurement programs are free to members, even if the animal is not being registered," Peterson went on. "Our members collect and submit records on heifers, steers, and bulls, expanding the volume of records available and increasing the reliability of the results."

The Sire Summary is mailed free of charge to all active ASA members. Nonmembers may obtain copies by mailing a check in the amount of \$5 for each copy requested to: American Simmental Association, One Simmental Way, Bozeman, MT 59715.

**New Case
ONE-TWO
Farm Tractor
Offer**

1. PLUS 2.

**CASH REBATES
up to
\$3200**

If you buy one of our new Case farm tractors listed in this ad, between Aug 1, 1980 and Oct 31, 1980, Case will send you a check for the dollar amount shown opposite the Case model you buy, or you can apply the rebate towards your down payment. NOTE: Government Agencies/Departments do not qualify for rebate.

Eligible Models	Cash Rebate	Eligible Models	Cash Rebate
885	\$ 500	2290	\$1900
990	\$ 700	2390	\$2100
995	\$ 700	2590	\$2200
1210	\$ 800	4490	\$2300
1410	\$ 900	4690	\$3000
2090	\$1500	4890	\$3200

**WAIVER
OF FINANCE
CHARGES
UNTIL
MARCH 1,
1981**

If you buy any of our new Case farm tractors or one of our used farm tractors of any make between Aug 1, 1980 and Aug 31, 1980 and finance it through J I Case Credit Corporation finance charges will be waived from date of purchase until March 1, 1981.

*Purchase date extended
thru October 31, 1980!
See us now and save!*

- CONVENIENT FINANCING
- LEASING
- RENTALS
- PARTS SERVICE
- RECONDITIONED TRACTORS

See or call us now



A. L. HERR & BRO.
312 Park Ave
Quarryville PA
(717) 786 3521

EDWARDS FARM EQUIP.
291 West Moorestown Road
(Rt 512 Clearfield)
Nazareth PA
(215) 759 0240

**E. W. BILEWICZ
EQUIP., INC.**
Elmer Rd Richwood NJ
(609) 881 2692

C. H. WALTZ SONS, INC.
RD1 Cogan Station PA
(717) 435-2921

STOUFFER BROS., INC.
1066 Lincoln Way West
Chambersburg PA
(717) 263 8424

PEOPLES SALES & SERVICE
Oakland Mills PA
(717) 463 2735

BINKLEY & HURST BROS.
133 Rothsville Station Rd
Lititz, PA
(717) 626 4705

PAUL SHOVER'S, INC.
35 East Willow St
Carlisle PA
(717) 243 2686

**ZIMMERMAN'S
FARM SERVICE**
Bethel PA
(717) 933 4114

C. & P. FULTZ EQUIP.
RD 1
Spring Mills PA
(814) 422 8805

CLAIR J. MYERS
Lake Road R1
Thomasville PA
(717) 259-0453

T & T SUPPLY, INC.
RD5 Danville PA
(717) 275 0927
2 mi S off Rte 54



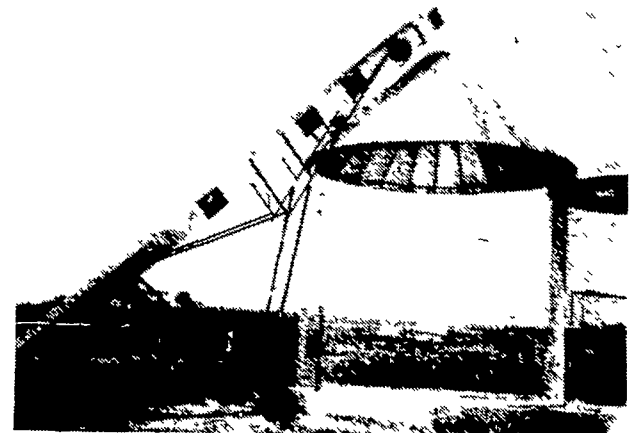
**READ
LANCASTER FARMING
FOR COMPLETE
AND UP-TO-DATE
MARKET REPORTS**

SALES & SERVICE
MILLER'S REPAIR
1 Mile North of Bird-in-Hand
8 Miles East of Lancaster
RD1, Bird-in-Hand, PA PH: 717-656-9013

WISCONSIN

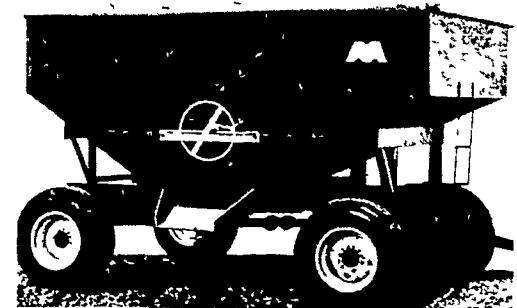


SALES & SERVICE



**ZIMMERMAN
PORTABLE ELEVATORS**
Will Carry Your Corn & Hay
28 ft. . . \$1050
32 ft. . . \$1095
* 36 ft. and 40 ft.
also available

**BEHLEN
CORN CRIBS**
1200 Bu. . . \$839
1600 Bu. . . \$1059



165 Bushel Gravity Box \$425
6 Ton Wagon \$395
Combination - \$800
Less Tires