

Livestock market and auction news

Lancaster Farming, Saturday, September 13, 1980—A13

Indiana Auction

Thursday, September 11
Homer City, Pa.

Report supplied by PDA

CATTLE: 80. Compared with last Thurs. market: Sl. cows 50-1.00 lower. Sl. steers: few Standard 56.25-57.00; one Good 57.50; few Standard 54.00-55.50. Sl. cows: Utility & Commercial 46.00-49.75; Cutters 43.50-47.00; Canner & L. Cutter 38.00-44.50. Sl. bullocks: few Good 58.25-60.50; few Standard 53.00-57.75. Sl. bulls: Yield Grade No. 1, 1400 lbs. 58.00.

FEEDER CATTLE: Steers, Heifers, few Medium & Large Frame No. 1, 350-650 lbs. 51.00-65.00.

CALVES: 136. Vealers gr. g Standard & Good mostly 2.00 lower. few Choice 93.00-104.00; Good & Choice 190-280 lbs. 65.00-75.00; few Good 79.00-92.50; Standard & Good 90-120 lbs. 68.00-78.00; 70-90 lbs. 65.00-

70.00; few Utility 55-130 lbs. 50.00-65.00.

FARM CALVES: Hol. Bulls 85-125 lbs. 80.00-120.00; Hol. Heifers 85-125 lbs. 85.00-127.50. Beef Cross Bulls & Heifers 70-90 lbs. 67.00-85.00.

HOGS: 82. Barrows and gilts 1.00-1.50 higher. US No. 1-2 200-235 lbs. 52.00-53.00; few No. 1-3 195-280 lbs. 46.00-47.75; few No. 2-3 280-290 lbs. 44.00-46.00; few No. 1-3 160-170 lbs. 43.25; Sows US No. 1-3 300-500 lbs. 43.00-45.25, one at 47.25.

FEEDER PIGS: 52. US No. 1-3 20-30 lbs. 8.00-9.00 per head; No. 1-3 40-55 lbs. 12.50-13.00; one lot of 100 lbs. 25.00.

SHEEP: 9. Sl. ewes: 13.50-16.50.

Belleville Auction

Wednesday, September 10

Report supplied by PDA

CATTLE: 123. Compared with last Wednesday's market, slaughter cows \$3 to \$5 lower. Few Standard

slaughter steers 53.10-54.10. Utility & Commercial slaughter cows 45.50-49.10. Cutters 43.25-47.00, Canner & Low Cutter 40.25-43.00, Shells down to 35.00. Few Yield Grade #1 800-1550 lbs. slaughter bulls 48.75-56.25.

CALVES: 135. Bulk of supply returned to the farm. Few Good & Choice vealers 78.00-95.00, Standard & Good 70-95 lbs. 50.00-65.00. Farm calves, holstein bulls 80-125 lbs. 70.00-117.00, mostly 90.00-110.00; few holstein heifers 80-100 lbs. 117.00-125.00.

HOGS: 204. Barrows & gilts \$2.50 to \$3 higher. US No. 1-2 200-240 lbs. barrows & gilts 49.00-50.25, No. 1-3 200-245 lbs. 47.00-48.60, few lots No. 2-3 250-275 lbs. 40.10-45.50. US No. 1-3 300-525 lbs. sows 37.75-41.25, few No. 2-3 250-500 lbs. 32.00-35.75. Few Boars 32.50-34.25.

FEEDER PIGS: 465. US No. 1-3 20-35 lbs. feeder pigs 8.00-16.00 per head, No. 1-3 35-50 lbs. 14.00-21.00, No. 1-3

60-70 lbs. 23.00-27.50 per head.

SHEEP: 80. Choice 65-100 lbs. spring slaughter lambs 54.00-59.50, Good 45-100 lbs. 50.00-55.00. Slaughter ewes 15.00-31.50.

New Holland Dairy

New Holland, Pa.

Wednesday, September 10

Report supplied by auction

Reported receipts of 106 cows and 84 heifers and 9 bulls. Market stronger.

Load of NY purebred & grade fresh cows, 1375.00-1800.00, springers 1525.00-1800.00; Load of Pa. springers, 1025.00-1550.00; Load of Pa. fresh cows, 1025.00-1325.00; Load of N.Y. & Susquehanna Co. fresh cows, 1300.00-1750.00; Load of Wisconsin fresh cows, 1125.00-1950.00. Locally consigned cows 650.00-1475.00; Springing heifers 1000.00-1350.00; Open Heifers 390.00-750.00; Bulls 380.00-610.00.

Lancaster Feeder Cattle

Friday, September 5

Report supplied by USDA

Today 552
Last Friday 728
Last Year 502

TREND: Compared to last Friday feeder steers 2.00-3.00 lower; feeder bulls 5.00-6.00 lower. Supply included few lots in six to 20; although large share of supply sold in lots of three or less.

FEEDER STEERS: MEDIUM FRAME 1-2: 580-810 lbs. 67.75-72.00; one lot 320 lbs. 80.00.

MEDIUM FRAME 2: 520-765 lbs. 62.25-68.00.

FEEDER BULLS: MEDIUM AND LARGE FRAME 2: One lot 515 lbs. 71.25.

MEDIUM FRAME 2: Couple lots 530-695 lbs. 53.25-61.10.

MEDIUM FRAME 2 (HOLSTEINS): Couple lots 555-755 lbs. 43.75-47.75.

Special Slaughter Cattle Sale

Harrisonburg, Va.

Thursday, September 4

Report supplied by VDA

There were 214 head sold.

All cattle were graded by Representatives of the VDACS's Division of Markets, Livestock Section on USDA standards and sold by the hundredweight.

Choice Steers: 925-1280 lbs. 67.20-69.30.

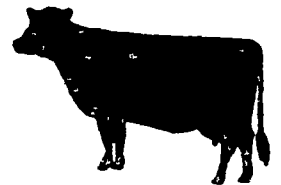
Singles: 910-1310 lbs. 64.00-76.75.

Good Steers: 975-1200 lbs. 64.00-68.30.

Singles: 1000-1350 lbs. 60.00-67.25.

Good Holsteins: 1340-1500 lbs. 53.90-57.50.

Choice Heifers: 800-1000 lbs. 62.80-68.00.



SEE US
AT THE

GRATZ FAIR

SEPTEMBER 14 - 20, 1980

★ ★ ALL THESE ITEMS ON DISPLAY! ★ ★

SAME

THE FOUR WHEEL
DRIVE



What Makes
SAME Tractors
Better?
The SAME
Air-Cooled
Diesel Engine!

2, 3, 4, 5, or 6 cylinder inline diesels provide 35 to 140 h p for the 21 models of SAME 4 WD and 2 WD tractors

These fuel efficient engines have double (air and oil) cooling systems and have direct fuel injection from camshaft operated pumps for easier starts, reliable performance and lower fuel consumption (up to 40%)

Being air-cooled, there is no radiator, hoses, thermostats, water filters no water pump, no anti-freeze no boiling, no freezing so about 40% of the down-time problems connected with liquid cooled engines are eliminated You benefit by lower original cost, lower operating and maintenance costs, faster warm-up to most efficient operating temperature, and longer engine life to name a few

Cylinders and heads are individually replaceable and all vertical parts are interchangeable This means faster, easier servicing and maintenance as well as fewer parts to stock

Of course, the engine is only part of the story see your SAME dealer to check out, test drive and learn about all the special features that SAME offers including a limited 2 yr./3000 hrs warranty and a surprisingly low price tag.

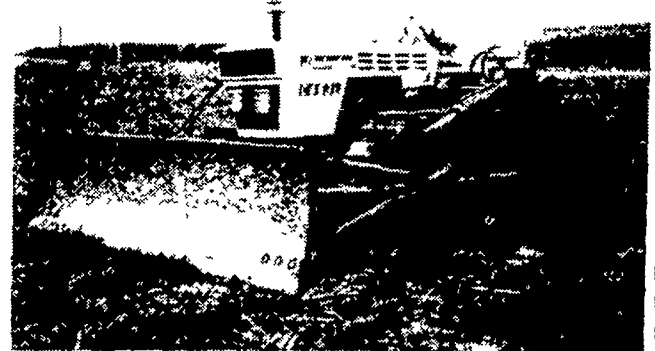
LAMBORGHINI...
the trouble-free Ag Type CRAWLER
with lower initial, operating and
maintenance costs

★ 3 models - 59, 69 and 75 engine h.p. — both with dependable air-cooled diesel engines.

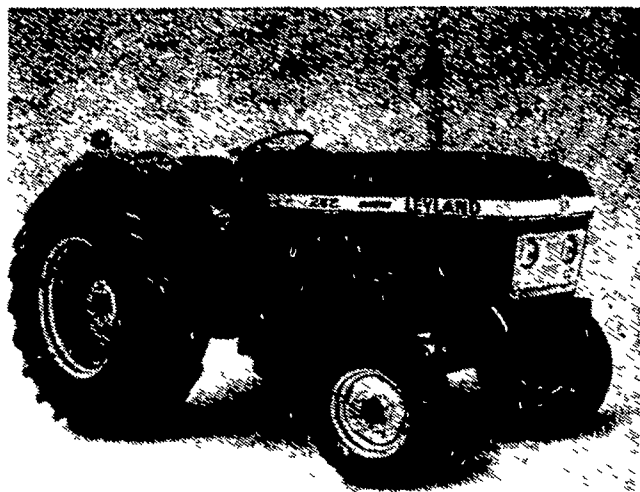
★ Lamborghini crawlers have independent (540) p.t.o., 8 speeds forward, 4 speeds reverse, 14" pads, 66" overall width, cold weather starting and heavy duty starter, as standard.

★ 3 pt. hitch, remote hydraulics

★ Lamborghini crawlers are manufactured by one of the oldest crawler mfrs. in Europe. Complete crawler and parts will be available at Jonestown, Pa.



DOZER BLADES AVAILABLE



NEW LEYLAND SYNCHRO SHUTTLE

★ Greater Productivity ★ Forwards & Backwards
LEYLAND IS HERE WITH A NEW LINE OF TRACTORS

SYNCHRO SHUTTLE — Shift straight from first to reverse and back, no stopping to change gears. Shuttle back and forth; pre-use control and efficiency is at your finger tips. It's the fastest loader-tractor you can buy. Smooth, on the move shifting within the 9 forward and 3 reverse speeds. LEYLAND: engineered to wring more work from today's more costly fuel.

UP TO \$600 FACTORY REBATE

A
REAL CHANGE
FOR THE
BETTER!

FOR SALE
Used Deutz Tractor
8006, 4 W.D., 95 P.T.O.
H.P. 1675 hours, steel
wheels, excellent cond.
\$12,000

HEISEY FARM EQUIPMENT, INC.

SALES, SERVICE and PARTS

- GT Dryers
- Landoll • Dion
- Leyland & Same Tractors
- Taylor-Way - Dunham
- New Idea

RD 1, Box 2294, Jonestown, PA 17038

Phone: 717-865-4526

Located 1/2 Mile South of Fredericksburg off Rt. 343 in Shirksville

Business Hours: 7 A.M. to 5 P.M. Daily, Sat. till noon, Evenings by Appt.

★ Financing &
Leasing
Available