

Gruber shows top Lehigh County hog

EMMAUS — The Lehigh County 4-H Swine Club held its annual round-up and sale at the Quakertown Livestock Market recently.

The 74 hogs sold for a total of \$12,878.40. The average price was \$.80 per pound with the Grand Champion and the Reserve Grand Champion; \$.73 per pound without the champions. Judge for the show was Gary

Dean, Strasburg. The results of the show and sale follow:

The Grand Champion was exhibited by Seth Gruber, R2 New Tripoli and sold to Hatfield Packing, Hatfield for \$4 a pound.

The Reserve Grand Champion was exhibited by Todd Bennecoff, R2 Kutztown, and sold to Hatfield

Packing Hatfield, for \$1.95 a pound.

The Lightweight Champion was exhibited by Bonnie Wessner, R2 New Tripoli, and sold to Sterling Zimmerman, New Tripoli, for .76 a pound.

And the Reserve Lightweight Champion was exhibited by Tim Wessner, R2 New Tripoli, was sold to Sterling Zimmerman, for 78

cents a pound. Reserve Middleweight Champion exhibited by Scott Lazarus, R1 Germansville, was sold to George's Foodliner, Bethlehem, PA, for 74 cents a pound.

And the Reserve Heavyweight Champion was exhibited by Scott Lazarus, R1 Germansville, and sold to Leidy's Inc., Souderton, for 71 cents per pound.

Fitting
Senior Division - 1. Dave Brannan, Emmaus, 2. Tim Wessner, R2 New Tripoli; 3. Cheryl Wessner, R2 New Tripoli; 4. Ronald Haas, R2 Orefield; 5. Donald Haas, R2 Orefield.

Intermediate Division - 1. Willi Wilson, R2 Mertztown; 2. Todd Bennecoff, R2 Kutztown; 3. Leslie Lazarus, Whitehall; 4. Seth Gruber, R2 New Tripoli; 5. James McCauley, R2 New Tripoli.

Junior Division - 1. Scott Lazarus, R1 Germansville; 2. Mike Capozzella, R1 New Tripoli; 3. Andrew McCauley, R2 New Tripoli; 4. Ben Gruber, R1 New Tripoli; 5. Taylor Rauch, R1 New Tripoli.

First-Year Member Division - 1. Amanda Gruber, R1 New Tripoli; 2. Jason Moyer, R1 New Tripoli; 2. Chris Wenhold, R1 New Tripoli; 4. Greg

French, R1 New Tripoli; 5. Russell Drissel, R2 Coopersburg.

Showmanship
Senior - 1. Ronald Haas; 2. Tim Wessner; 3. Dave Brannan; 4. Cheryl Wessner; 5. Donald Haas.

Intermediate - 1. Bonnie Wessner; 2. Leslie Lazarus; 3. Todd Bennecoff; 4. Seth Gruber; 5. Willi Wilson.

Junior - 1. Andrew McCauley; 2. Scott Lazarus; 3. Ben Gruber; 4. Taylor Rauch; 5. Mike Capozzella.

First-Year Member Division - 1. Greg French; 2. Jason Moyer; 3. Chris Wenhold; 4. Russell Drissel; 5. Amanda Gruber.



The Grand Champion at the Lehigh County 4-H Hog Roundup is shown with his exhibitor, Seth Gruber, R2 New Tripoli, left and Doug Clemens, Hatfield Packing Company, the buyer at \$4 per pound.



The Reserve Grand Champion animal at the Lehigh Hog Roundup was shown by Todd Bennecott, right, and sold for \$1.95 per pound to Hatfield Packing Co. represented by Doug Clemens.

Food festival held in Havre de Grace

HAVRE de GRACE, Md. — An Old-fashioned cooking demonstrations will highlight Steppingstone Museum's Fall Food Festival to be held on Sunday, September 28, 1:00 to 5:00 p.m. on the museum grounds, Quaker Bottom Road, near Havre de Grace, Maryland.

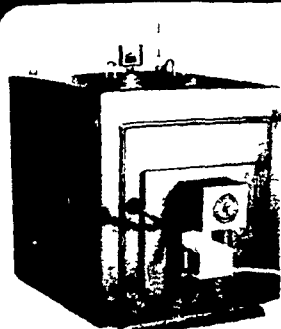
Cider-pressing, applebutter-making, and baking on the wood stove are among the demonstrations planned. Visitors will have a chance to sample homemade baked goods to be sold during the afternoon event.

The festival marks the end of the 1980 season. It is a last opportunity to also see the 1880-1910 collection of rural arts and crafts and the farm home furnished in that same period - until the museum re-opens again in May, 1981.

To reach the museum, take US Route 1 south, left on MD Route 161, left on MD Route 155 and left on Earlton Road (just before Exit 6 on I-95), then follow the signs to "Steppingstone"

Admission donation is \$1 for adults and 25 cents for schoolchildren

An Automatic COAL-WOOD FURNACE with ROTARY GRATE? GREAT!



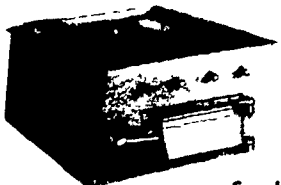
AN ESHLAND INNOVATION WORKING FOR YOU! These units are designed for burning both Coal and Wood with maximum efficiency and convenience

The conditions for burning these two fuels are considerably different and Eshland designers met the challenge

The AUTOMATIC DUAL DRAFT system and unique ROTARY GRATE make it extremely convenient and easy to switch from one fuel to the other and THERE'S MORE like

- Large Capacity 40 & 55 Gal Models
- Aquastat Controls
- Available in two parts for easy handling and installation
- Economical source of domestic Hot Water

See Us TODAY For All The Details!



Visit Us at the Solanco Fair September 17-19

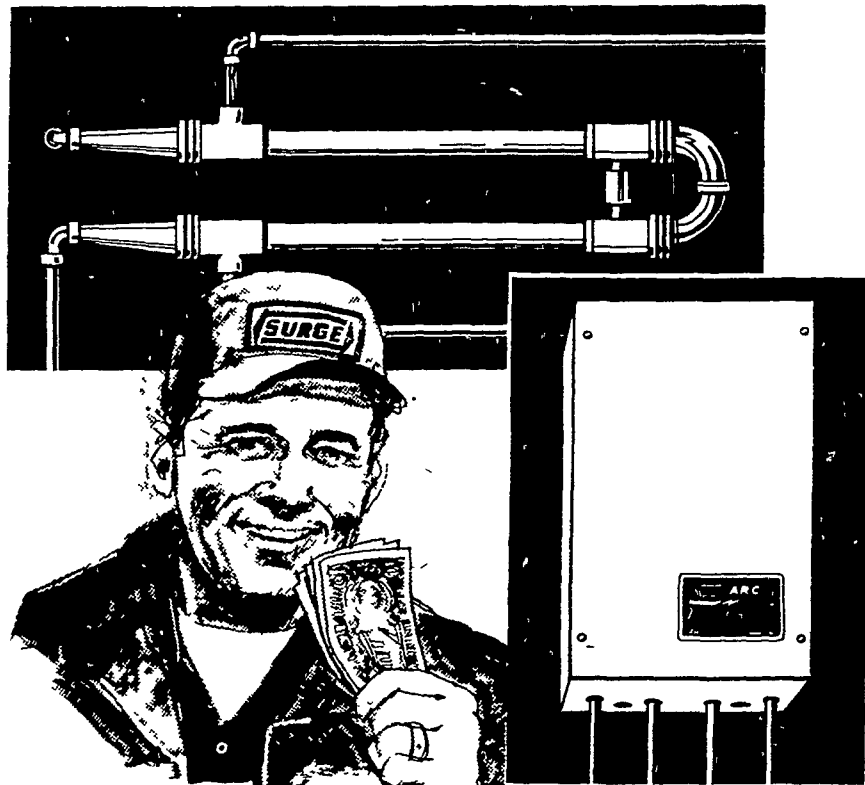
ALTERNATIVE ENERGY SYSTEMS

Allen W. Lawver
381 E. Jackson Street
New Holland Pa 17557

FOR FREE HEATING SURVEY & ESTIMATE CALL 717 354 0412

Dealer for Multi Fuel Central Heaters Wood & Coal Stoves Solar Panels & Wind Generators

Cool your milk and your utility bills, too.



Looking for ways to improve the efficiency of your present milk cooling system? Check into the Surge Tube Cooler and the new Surge ARC Energy Converter

The Surge Tube Cooler is a high efficiency heat exchanger that pre-chills your milk on its way to your tank. If your present tank can handle the volume but not the heat load, here's a way to guard milk quality and save up to 30% on your annual utility bill, too

The new Surge ARC Energy Converter can be easily added to your present system, increases milk tank efficiency, can lower your operating costs as much as 20%, and can reduce energy needed to heat water as much as 50%

Let us figure how much a Surge Tube Cooler and ARC Energy Converter could save you. Call us today

VISIT US AT THE SOLANCO FAIR SEPTEMBER 17-19

★ Covering So. Lanc. Co., So. Eastern York Co. and Chester Co. Areas.
★ 24 Hour Service - 7 Days A Week.

JAMES LEFEVER
Bus. Phone: 717-786-1533
Home Phone: 717-529-2618

SALES & INSTALLATION

- Milking Parlors
- Pipelines
- Bulk Tanks

All the Equipment and Supplies Needed To Satisfy the Modern Dairy Farmer.

SERVICEMEN:

Charles Wagner 717-786-1553
Michael Mellinger 717-529-2285

SERVICEMAN & ROUTE SALESMAN
Ralph McLaughlin 717-786-4430

ROUTE SALESMAN
Ken Hiatt 717-593-6207

JIM'S SURGE SALES & SERVICE

P.O. Box 37, Oak Bottom Rd.,
Quarryville, PA 17566
1/4 Mile West of Quarryville

