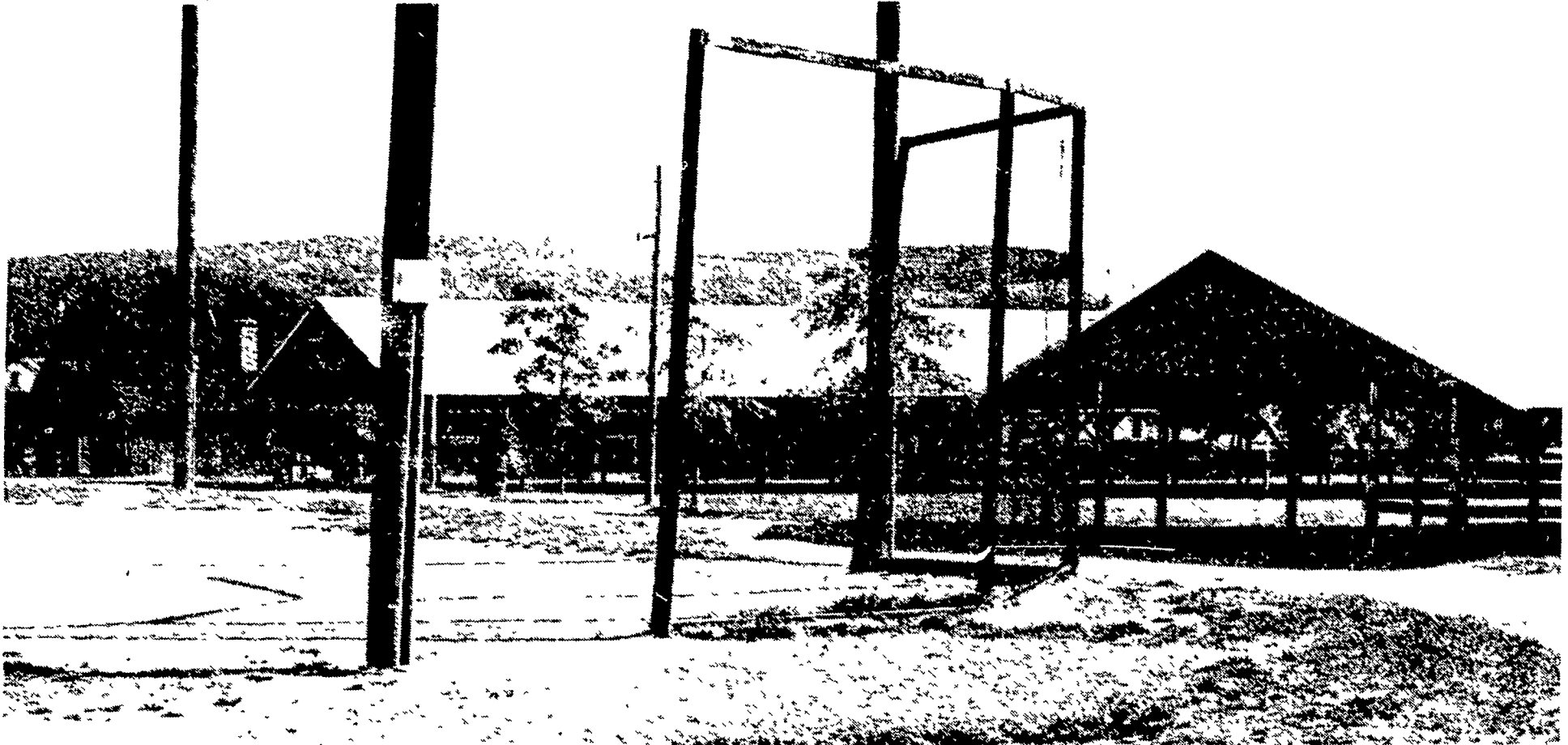


People are the fair — see you at Solanco



For sure, a fair is a fair because of the participation of the people and animals in it. If anyone has doubts about that, let them spend some time wandering an abandoned fairgrounds. While the sparrows which sit in the quiet rafters are a pleasant diversion, and the breeze which ripples the distinctive smell of sawdust

through the buildings is refreshing, the potential the grounds hold forth for next week's fair causes a quickened tempo in one's mind and pulse. For soon the aromas of french fries and the lowing of cattle will command the air currents. And friends and neighbors will smile around each corner. Such is a fair.

Home produce shine, at Solanco Fair

QUARRYVILLE — Judging and displays of vegetables, flowers, arts and handicrafts, farm products and baked goods are a popular portion of the annual Solanco Fair.

The folks in Southern Lancaster County will get their opportunity to pit their entries against those of their neighbors while enjoying plenty of tantalizing food.

For three days starting Wednesday, September 17, and ending on Friday, September 19, the Solanco Fair will open its doors to judging competitions, rural athletic contests and the produce of the area.

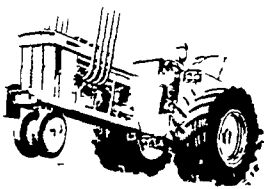
Entries will be accepted

Tuesday from 3 p.m. - 10 p.m. and Wednesday until 10 a.m. and will be judged Wednesday afternoon during which time the buildings except the livestock buildings and kitchen will be closed to the public.

Exhibits must be picked up after 10 p.m. on Friday and prior to 8:30 a.m. on Saturday. Premium checks should be picked up by 10 p.m. Friday at the Fair office.

Commercial displays and livestock on display will round out this 31st edition of the fair.

Tractor Pull Tally



Buck Tractor Pull
September 6, 1980
5000 SS

1. Jim Brubaker, Quarryville, PA AC 180 235 9; 2. Dale Smoke, Cochranville, PA AC 180 229 9; 3. Bert Stauffer, Ephrata, PA Deutz 8006 226 3

5000 Mod

1 Curt Stoltz, Myerstown, PA Hmde/468 Chev FP/249 6; 2 Charles Brommer, Columbia, PA Hmde/tank FP/247 11; 3 Gary Mills, Fallston, MD JD Skidder/427 Chev 295 3.

7000 SS

1 Tony Stauffer, New Holland, PA Deutz 9006 282 6; Bert Stauffer, Ephrata, PA Deutz 8006 255.9; 3. Dan Greenleaf, Martinsburg, Pa JD 4010 253 7.

5500 FWD

1 Robert Smith, Winchester, VA 1970 Chevy 294.9; 2 Dan Fellenbaum, Lititz, PA 1969 Chevy 261 2;

3 Michael Omps, Winchester, VA 1970 Ford 258.8. 7000 Mod.

1. Elwood Funk, Lititz, PA Allison 272 2; 2. Stanley Groner, Pequea, PA 454 Chevy, 267 11; 3 L & Z Pulling Team, Mt. Joy, PA 267 10.

9000 SS

1 Coleman Wheatley, Bethel, DE JD 4240 252.4; 2 Harry Greist, Coatesville, PA IH 1456 241 6; 3 Dan Greenleaf, Martinsburg, PA JD 4010 236 11

9000 Open

1 Willard Will, Central City, PA Hmde/Allison, 271 10; 2. Richard Zimmerman, Mt Joy, PA Case 800/3-440 Dodges, 264 10; 3 Elwood Funk, Lititz, PA Hmde/Allison 261.5

6500 FWD

1 Robert Smith, Winchester, VA 1970 Chev 300 0; 2 Michael Omps, Winchester, VA 1978 Ford, 286 10; 3. Willard Cahall, Townsend, DE Ford 282 7

CORRAL

THE HIGHEST BANK INTEREST RATES ALLOWED BY LAW



Drive in the best deal on the range! You can wrangle sky high interest with one of our many savings plans. Just stop in and see us for all the info!

THE FARMERS NATIONAL BANK OF QUARRYVILLE

SMALL ENOUGH TO KNOW YOU

LARGE ENOUGH TO SERVE YOU

TWO CONVENIENT SOUTHERN LANCASTER COUNTY LOCATIONS
★ QUARRYVILLE Phone: (717) 786-7337 ★ PENN HILL

An Equal Opportunity Lender • Member F.D.I.C. • Each Account Insured To \$40,000