

Garrett County Production Sale held



Ezra Yoder leads Betsy My Elevation Elaine who sold for \$5200 during the recent Holstein Production Sale. Pictured left to right are Oren Bender, Tim Rau, Charles Haugerud, who purchased the cow; a representative from Briar Hill Farms, and Eli Yoder, from Grantsville, who consigned the cow.



Walter Brown purchased Cove-Run Astro Grace Inn at the Garrett County Holstein Production Sale held at the McHenry Fairgrounds for \$10,500. Pictured in front are Bob Bender at the halter with younger brother Brian. Left to right top selling cow are Doug Bender, Kevin Bender, Chester Yoder, Clayton Smith, Patty Yoder, Walter Brown, Alice Bender, Tim Rau, Sheila Bender, Charles L. Haugerud, Fanny Bender and Oren Bender, the founder of Cove Run Farms in Accident.



Miss Welcome Inn Jane Blackie is displayed by Olen Yoder. She was sold at the Garrett County Holstein Club's annual Production Sale for \$3400. Pictured in the background are Oren Bender who read the pedigrees, Clark Yoder, the auctioneer; Robert H. Miller, sale chairman and consignor, and Mr. Kore J. Peachy who purchased the animal. Forty-three animals averaged \$2,258.14 for a total sale revenue of \$97,100.00 which went to consignors in Garrett and Somerset counties.



Olen Yoder displays CH-LO-MA Elevation Gerty, a five year old cow which sold for \$3100 at the Garrett Holstein Production Sale. Pictured left to right are Oren Bender who read the pedigrees; Clark Yoder, auctioneer; Charles Mason, the consignor; and Kore J. Peachy who purchased the cow. During the sale 39 bred heifers and cows averaged \$2,340.79 while four yearlings averaged \$1,437.50 each.



ALPINE PLANT FOOD

OFFERS A TOP QUALITY LIQUID PLANT FOOD AT ROCK BOTTOM PRICES.

- ★ Alpine minimizes expensive handling costs by utilizing farmer distributors.
- ★ Alpine eliminates expensive computer billing costs with cash accounts.
- ★ Alpine uses food grade ingredients for maximum availability and safety to plants.
- ★ Alpine in a neutral PH chlorine free plant food that will not rust equipment, freeze or settle out.

★ Alpine will guarantee the following prices for orders received until Sept. 30, 1980 for delivery and payment by:

Nov. 30.....	\$2.60	Jan. 31.....	\$2.70	Mar. 31.....	\$2.80
Dec. 31.....	\$2.65	Feb. 28.....	\$2.75	Apr. 30.....	\$2.90

— Pennsylvania Distributors —

HAROLD WOLF
Centre Hall
814-364-1349

GARY REPLOGLE
Bedford
814-847-2851

JAMES LANDIS
East Greenville
215-679-2682

CLYDE BARTHOLOMEW
Orangeville
717-784-1779

RICHARD WILSON
Stewartstown
717-993-6101

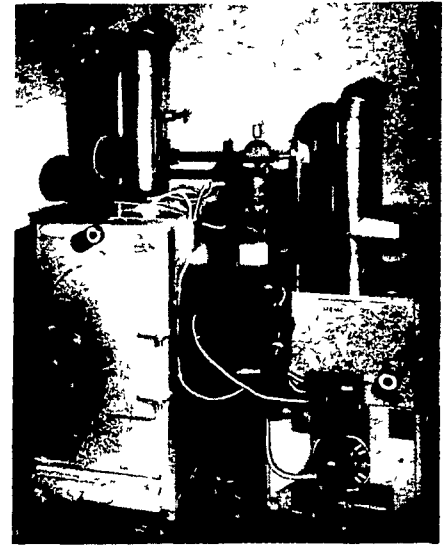
MEMCO® MW100 "THE TRUE DUAL SOLID FUEL BOILER"

First, Leading The Way

Patent #3,177,827 Tested & Approved E T L M

- 1 50-gallon water volume for safety and efficiency
- 2 Large fill door "17x22"
- 3 DUAL SOLID FUEL SHAKER GRATE (control front burn separate from rear), two separate shaking actions give maximum efficiency for wood, coal, or wood-coal combination burning
- 4 Removable ash pan, entire length of MW100
- 5 Wet leg design, water surrounds combustion chamber plus wet flue baffle
- 6 6GPM domestic hot water coil optional

- May be used separately or manifold to existing boiler
- Combination systems available in Oil-Gas-Electric Boilers as back up for maximum safety and efficiency



PENDEL HEARTH & HOME

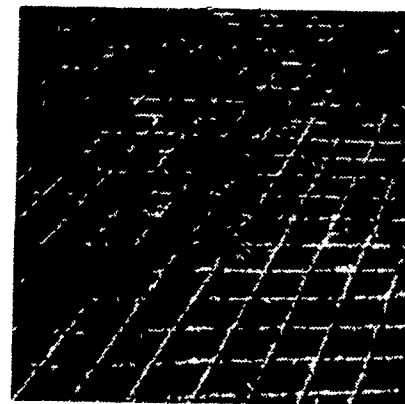
123 Pennsylvania Avenue
Avondale, Pa. 19311
Telephone: 215-268-8222
Hours: Tuesday thru Friday 12 - 5 and 7 - 9
Saturday 10 - 5
Dealer Inquiries Invited



Slick Problem Areas?

DAIRYMEN: CONCRETE-GROOVING Cuts Grooves in Concrete Floors

- PREVENT SPLITS
- INSTALL IN HOLDING AREAS
- IMPROVE HEAT DETECTION
- INSTALL IN FEEDING AREAS



Grooves 1/2" wide x 1/4" deep - 4" apart

- PREVENT BROKEN LEGS
- ELIMINATE COWS SKIDDING
- PREVENT CRACKED CONCRETE
- INSTALL IN ALLEYS

Why not join the increasing number of dairymen throughout the Eastern states who now receive profitable benefits from this service.

CONTACT US TODAY!

CONCRETE GROOVING, INC.

MERLE BECKER

399 S. Reading Rd., Ephrata, PA 17522
PHONE (717) 733-7589