

70 head Standard and Good 100 lbs. 30.00-53.00.

SLAUGHTER CALVES: Choice 320-400 lbs. 65.00-72.00; Good 300-420 lbs. 55.00-64.00, few 400-480 lbs.

RETURNED TO FARM: Bulk 90-115 lbs. holstein heifers 140.00-200.00, with around 50 head at 207.00-224.00, several 80-100 lbs. 90.00-140.00; bulk 90-115 lbs. holstein bulls 88.00-103.00, around 160 head 100-115 lbs. 105.00-110.00, several 80-100 lbs. 70.00-90.00.

Chambersburg Auction

Thursday, September 4
Report supplied by PDA

CATTLE: 355. Compared with last Thursday market: Slaughter steers steady; Sl. steers: High Choice & Prime No. 1, 72.60; Good 63.50-68.25; Standard 56.50-63.10; few Choice heifers 61.00-65.85; few Good 60.00-61.25; few Standard 57.00-59.00; Sl. cows: Utility & Commercial

46.50-52.50, few 54.85; Cutters 46.00-51.50; Canner & L. Cutter 43.00-47.00; Shells down to 38.00. Sl. bullocks: few Choice 63.00-65.25; few Good 53.00-55.00; Sl. bulls: Yield Grade No. 1, 1000-1875 lbs. 55.85-61.85, 1 at 63.75.

FEEDER CATTLE: Large Frame No. 2, 430-690 lbs. 60.00-70.00.

CALVES: 582. Vealers steady. Bulk of supply returned to farm. Choice 92.00-97.00 with few to 99.00;

Good 73.00-85.00; Standard & Good 65-90 lbs. 61.00-71.00 with few to 75.00.

FARM CALVES: Hol. Bulls 85-130 lbs. 90.00-123.00, mostly 100.00-120.00; Hol. Heifers 80-150 lbs. 125.00-208.00, mostly 155.00-195.00.

HOGS: 108. 5.00 lower. No. 1-3 200-230 lbs. 44.35-44.75. Sows 300-550 lbs. 36.50-39.75. Boars 30.00-34.50.

FEEDER PIGS 116. few US No. 1-3 25-55 lbs. 14.00-17.00 per head.

SHEEP: 22. 1 lot of Choice 75 lbs. 59.00; few Good 50-70 lbs. 53.50-55.50; few Sl. ewes; 12.50-21.00.

New Holland Horse

Monday, September 1

New Holland Sales Stables
Report supplied by auction
Reported receipts of 327 head of horses, mules, and ponies. Market steady.

Load of driving NY 700.00-1575.00; Better horses 550.00-850.00; Driving Horses 375.00-1300.00; Riding horses 375.00-500.00; Lightweight killers 350.00-475.00; Heavyweight killers 525.00-700.00; Mares 30.00-75.00; Colts 15.00-50.00; Geldings 30.00-75.00; Larger ponies 125.00-325.00.

Indiana Auction

Homer City, Pa.

Thursday, September 4

Report supplied by PDA
CATTLE: 106. Compared with last Thursday market: Slaughter steers unevenly

steady to weak; Sl. cows steady - 2.00 higher; Sl. bulls steady - 1.00 lower. Sl. steers: High Choice & Prime 73.00-77.50, few 68.50-77.00; Good 63.00-69.00; Standard 54.00-63.00. Sl. heifers: Choice 61.00-70.00; Good 56.00-62.00; few Standard 52.00-60.00. Sl. cows: Utility & Commercial 46.50-52.50; Cutters 43.50-51.00; Canner & L. Cutter 40.00-47.00; Shells down to 31.00. Sl. bullocks: (few) Choice 60.50-67.00; few Good 56.00-62.00. Sl. bulls: Yield Grade No. 1, 1200-2200 lbs. 56.00-64.00; Grade No. 2, 900-1500 lbs. 50.00-59.00.

FEEDER CATTLE: Steers, Medium Frame No. 1 300-600 lbs. 65.00-80.00; few Large Frame No. 2 450-700 lbs. 60.00-70.00. Heifers, Medium Frame No. 1 300-600 lbs. 58.00-73.00.

CALVES: 3243. Compared with 4207 head last week and 2500 head a year ago. Supply incl. 97 percent farm calves. Vealers Grading Good & Choice mostly steady. Standard & low Good steady - 5.00 lower. few Prime 112.00-120.00; Choice 90.00-106.00; Good 77.00-90.00; Standard & Good 90-110 lbs. 60.00-75.00; 70-90 lbs. 50.00-70.00.

FARM CALVES: Hol. Bulls 90-125 lbs. 80.00-115.00; Hol. Heifers 90-130 lbs. 110.00-215.00.

HOGS: 4725. Compared with 8176 head last week and 5851 head a year ago. Barrows and gilts 3.00-5.00 lower. US No. 1-2 200-240 lbs. 46.00-48.60 few to 50.00. No. 1-3 195-250 lbs. 44.50-47.00; No. 2-3 190-270 lbs. 42.00-46.00; No. 1-3 130-185 lbs. 35.00-45.00; Sows 1.50-4.00 lower. US No. 1-3 300-600 lbs. 36.50-43.00; No. 2-3 400-700 lbs. 30.00-37.00. Boars 30.00-36.50.

FEEDER PIGS 1513. Compared with 1962 head last week and 1410 a year ago. Feeder pigs steady to weak. US No. 1-3 20-35 lbs. 7.00-20.00 per head; No. 1-3 35-50 lbs. 14.00-31.00.

steady; Sl. steers few Good 59.75-60.25; few Utility 48.25-50.25; Sl. heifers few Choice 63.50-64.50; few Good 58.00-59.75; few Standard 52.00-55.00; few Utility 48.00-48.50; Sl. cows Utility & Commercial 46.50-50.75; with 1 at 52.00; Cutters 43.75-47.00; Canner & L. Cutter 40.50-45.50. Sl. bullocks: 1 Standard 53.25; Sl. bulls: few Yield Grade No. 1 1200-1525 lbs. 58.75.

FEEDER CATTLE: Heifers, Medium & Large Frame No. 1, 500-680 lbs. 50.50-58.00.

CALVES 133. Vealers Grading Standard unevenly steady. Good & Choice 200-300 lbs. 65.00-80.00 heavy weights. few Good 80.00-96.00; Standard & Good 90-120 lbs. 70.00-80.00; 65-85 lbs. 65.00-72.00; Utility 55-130 lbs. 50.00-65.00.

FARM CALVES: Hol. Bulls 85-125 lbs. 80.00-115.00; Hol. Heifers 75-120 lbs. 80.00-122.50; Beef cross bulls & heifers 75-110 lbs. 70.00-105.00.

HOGS: 74. No. 1-3 few lots 200-235 lbs. 45.00-46.25; No. 2-3 190-300 lbs. 42.00-44.00; No. 1-3 130-175 lbs. 35.00-42.00; Sows US No. 1-3 300-350 lbs. 36.50-43.00. Boars 36.00-36.25.

FEEDER PIGS 30. US No. 1-3 20-30 lbs. 7.00-10.00 per head; No. 1-3 35-40 lbs. 11.50-12.50; 1 lot No. 1-3 130 lbs. 52.00 per hundredweight.

SHEEP: 35. Few Choice 70-75 lbs. 61.50-62.00; Good 65-75 lbs. 52.00-59.00; Utility 35-45 lbs. 36.00-48.00.

Pa. Auction Summary

Friday, Sept. 5

Report supplied by PDA
CATTLE: 4976. Compared with 6812 head last week, and 5273 head a year ago. Compared with last week's market: Slaughter steers unevenly steady; Sl. heifers

12TH ANNUAL HARVEST FAIR CRAFT SHOW AND 10TH ANNUAL HORSE PLOWING CONTEST

Sat. & Sun., September 13 & 14
10 A.M.
Historic Schaefferstown, PA

September Sale On Insulation

FIBERGLASS INSULATION
1 Roll 3 1/2"x15" (88.12 sq. ft.) **\$12.00**
1 roll 3 1/2"x23" (135.12 sq. ft.) **\$18.00**

We also blow insulation and handle spouting

FETTERVILLE SALES
RD2, East Earl, PA
(Rt. 322 & Corner of Fetterville Rd.)
717-354-7561

ON SALE NO BETTER TIME TO BUY THAN NOW! STIHL MODEL SG-17 MISTBLOWER

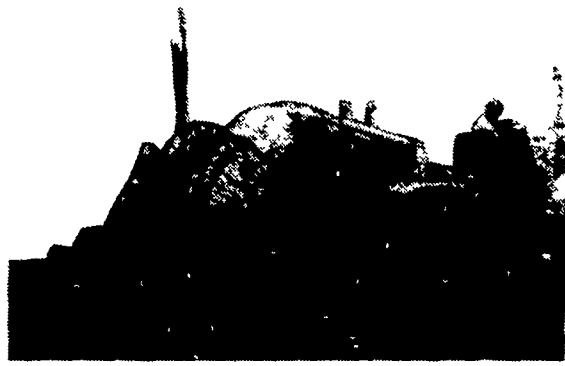
A multi-purpose power tool which Blows, Dusts, & Sprays liquids and dry chemicals, to control and eliminate weeds. Complete tobacco, worm and sucker control - covers total leaf over and under. Complete fly and insect control in and around barns.



OUTLASTS THEM ALL YOUR FULL SERVICE DEALER WES STAUFFER SMALL ENGINES

R.D. 3, Ephrata, Pa.
717-733-9174 - 717-733-0809
1/4 mi. S. of Rt. 322 on Pleasant Valley Rd., Ephrata Exit, new Rt. 222.

DRAINAGE PROBLEMS?



COCALICO EQUIPMENT HAS THE TWO MACHINES TO HANDLE YOUR DRAINAGE PROBLEMS.

★ Both Machines Equipped with Laser Beam Grade Control

Drainage Pays High Returns

Investment	Typical Annual Return
Land Drainage.....	21-46%
Farm Buildings.....	3-23%
Farm Land.....	11%
Stocks.....	7.4%
Bonds.....	6.1%

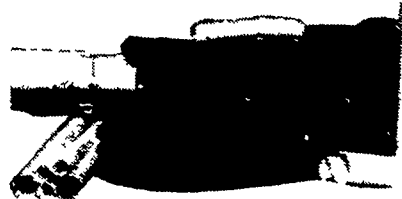
COMPARE

Even with the conservative figures shown here, it's obvious that land drainage should top farmers' lists of investment priorities.

★ We Stock Heavy Grade Tubing which Exceeds SCS Specifications. In sizes 4", 6", 8", 10" and 12".

NOW AVAILABLE 15" & 18" Tubing

★ Also Pipe And Fittings For Tile Outlet Terraces.



COCALICO EQUIPMENT CO.

DRAINAGE & EXCAVATING

RD #3, DENVER, PA 17517

PH: 215-267-3808