

**+2200 P.D. Milk**

**99% Repeatability**

**Plus on Type**

The only Holstein Bull Ever Over +2,200 P.D. Milk, at 99% Repeatability and Plus on Type

Highest Rated Holstein Bull, over +1500 P.D.M. on Solids Not Fat and Protein Percentage Improvement!

from



Member Cooperatives  
 Northeastern Breeders Association  
 Md Artificial Breeding Coop, Inc  
 W Va Artificial Breeders Coop, Inc

9H107  
**JET STREAM**



**9H107 Arlinda JET STREAM-Twin (VG-87)**  
 USDA 7/80 RIP 43% Rpt 99%  
 6102 Dtrs, 1792 Herds 18,431m 3 5% 637f  
 P D ('74) +2,200m -23% +43f +\$203  
 HFA Type Summary (7/80)  
 PDT +0.01 99% Rpt.

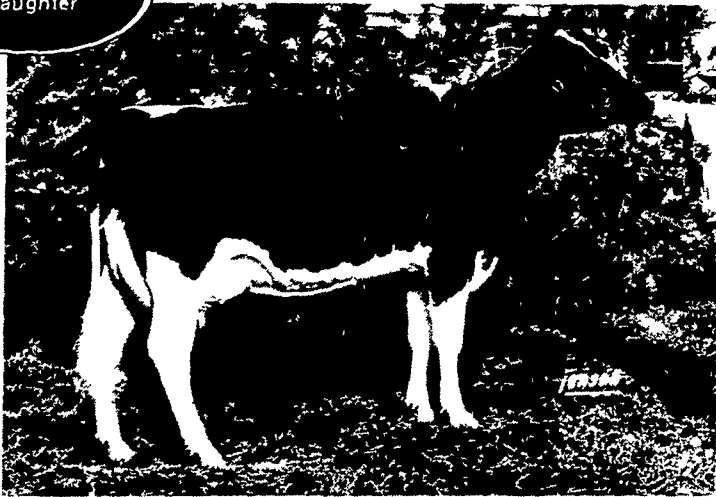
A good cross for  
 Elevation &  
 Astronaut dtrs

JET STREAM  
 Daughter



**GRUBBY-NECK HARMONY JS LEONA (VG-88)**  
**EX MAMMARY**  
 2y5m 345d 2X 21,690m 3 5% 762f  
 Owner Harmony Farm, Federalsburg, MD

JET STREAM  
 Daughter



**KEYSTONE JET STREAM MAUREEN (VG-87)**  
 1y11m 303d 2X 14,471m 3 9% 558f  
 2y10m 310d 2X 18,153m 3 9% 703f  
 Owner Keystone Farm, Easton, PA

JET STREAM  
 Daughter



**TODD ACRES JET STREAM PHYLLIS (VG-88)**  
 2y6m 345d 2X 19,890m 4 1% 826f  
 3y6m 338d 2X 25,915m 4 0% 1014f  
 Owner Owen Martin, Hagerstown, MD

**JET STREAM** ties together many desirable qualifications - a strong pedigree, an outstanding predicted difference, and an exceptional type transmitting pattern

**JET STREAM** daughters have real dairy quality with flat, clean bone and well-attached high quality udders. Look for him to be an improver of center support, teat size and shape, and fore and rear udders

His flatbone characteristics set to the leg, width of rump and width of pelvic and thigh area along with his dairy strength makes him a fine mating for **ELEVATION** and **ASTRONAUT**

daughters. A cross that should produce outstanding results

**JET STREAM's** second crop daughters are outstanding. The number of daughters in his production proof now totals 6102 and his daughters classified more than tripled. The dairymen milking **JET STREAM's** are very pleased with some two year olds milking over 90 lbs of milk per day. You can see why they are using him, again! You should too!

Contact your **NEBA—Sire Power** Professional Representative today! Phone 717-836-3168 or 3127



R.D. 2, TUNKHANNOCK, PA 18657

PHONE 717-836-3127