

FARM EQUIPMENT



JOHN DEERE 38 HARVESTER w/2 row wide corn head and pickup head, good condition \$2500.00
NEW IDEA 702 UNI SYSTEM, fully equipped.

C. & P. FULTZ EQUIPMENT

RD 1 Spring Mills, PA (814) 422-8807, Ask for Paul

USED EQUIPMENT

TRACTORS

- Ford 641 w/snow blade, 550 hrs
- Case 1175, Cab & Air
- Case 930 Tractor "CK"
- Case 430
- David Brown 990 w/Loader
- JD 3020 w/Loader
- JD "B" - As Is
- Farmall "A"
- White 2-135 Tractor, 150 Hours
- Leyland 154 with Loader, 800 hours w/manure bucket, \$3200

LOADERS

- Case 1537 Skid Loader
- Case 1830 Uni-Loader
- Case 450 Crawler Loader

TILLAGE

- Case Disc Harrows, 9' & 10'
- Case 2 Bot Plow
- Case 400 18"-20" Auto Reset 4-Bot Plow
- MF 4-Bot Plow, Semi
- Oliver 2 Bot Trailer Plows
- Used Cultivator

HARVESTING EQUIPMENT

- Gehl 600 Harvester, 2 Row Cornhead and Pickup Head
- NI Unisystem - 702 Tractor, 710 Combine & 760 Harvester
- Int Mtd Picker, 2 Row
- MF No 61 1-Row Picker
- JD No 25 Harvester
- Case 300 Harvester
- Case V-12 Shredder
- Hesston 2000 100 Harvester

- NI Forage Blower
- MF Chopper
- MC Chopper

HAY EQUIPMENT

- Hesston 1014 12' & 14' Windrowers
- Hesston PT 10
- New Idea Trailer Mower
- Mott Mower
- 3 pt Hookup Mower

MISCELLANEOUS

- Ford 4 Row Corn Planter
- JD 2-Row Planter
- JD 494 Corn Planter 4-row
- 10 Used Spreaders
- 3000 Gal Husky Tank Spreader
- NI 224 10-ton Spreader

Special On 1200 Bu. CORN CRIBS \$775

NEW IDEA

Kasten Self Unloading Wagon...New...Special!



ZIMMERMAN'S FARM SERVICE
 Bethel, PA
 Phone 717-933-4114

FARM EQUIPMENT

Int 1066 dual & cab, Int Moutmic 2340 loader, Int 205 combine both heads, pulley attach 706, roll bar 1066, 801 Ford 4 wheel drive & winch 814-672-8196

NI 319-322 12 roll Mounted Picker
 NI 737 Husking Unit
 NI 744 N-row Head
 NI 705 Um Power Unit
 NI 717 Combine
 NI 213 Spreader
 NH 479 Haybine

ROY H. BUCH INC.
 Ephrata
 717-859-2441

FOR SALE

NI PTO manure spreader, 195 bu \$2850
 Mayrath auger, 52'x6" w/transport wheels \$1000
 Brillion crow foot plow packer w/transport wheels, 4 plow width \$325
 Brillion stalk chopper, 15' width, hyd lift \$2000
 Badger barn cleaner, complete w/300' chain, 14" drag, 5 hp motor and ramp \$2700
 Trulock continuous flow grain dryer, 300 bu capacity \$2500
 All items in excellent condition

DON L. SNYDER
 Rt 1, Box 19
 Montoursville, Pa 17754
 717-433-3182



USED EQUIPMENT
 Farmall Super C with Loader
 MH 33 Tractor
 MF 65 Tractor
 MF 85 Tractor
 MF 1105 Tractor
 Used Balers
 MF 81 Hay Tender

NEW EQUIPMENT
 MF 205 Tractor
 MF 245 Tractor
 MF 265 Tractor
 MF 275 Tractor
 MF 285 Tractor
 MF 2675 Tractor
 MF 30B Tractor Loader

MF Plows
 MF 620 Disk
 MF 1050 Grander Mixer
 MF Rakes
 MF 750 Combine
 MF Grain Drills
 MF 22 Bale Throwers
 MF 124 Balers
 MF 128 Baler
 NI Manure Spreaders
 NI Fertilizer Spreaders
 NI 636 Wagons
 Century Sprayer
 Caldwell Shredder
 Bearcat For. Harvester
 Snapper Lawn Equip.

N.H. FLICKER & SONS, INC.

Box 68
 Maxatawny, PA 19538
 215-683-7252

NEW EQUIPMENT
 WHITE - 2-155 Tractor w/cab
 2-85 Tractor
 2-45 Tractor
 598 Plow
 (2) 5100 4 Row Corn Planters

NEW IDEA-
 299 Mowditcher
 323 Corn Picker

KAWANEE-
 46 ft. 8" Auger Elevator

BRILLION-
 12 ft. Pulveriser

GEHL-
 7200 Flail Chopper
 1400 Round Baler
 135 Grinder Mixer
 940 Metal Forage Box
 940 Wood Forage Box
 FB99 Forage Blower

KELLY-
 36" Log Splitter

USED EQUIPMENT

Int. 350 Harvester with 1 Row Cornhead and Hay Pickup Head.
 Oliver 3242 Mtd. 3-Bot. 14" Plow
 Oliver 1850 Gas
 (2) White 5400 4-Row Cornplanter, 1 w/ Liquid and 1 w/ Dry Fert.
 FB88 Gehl Forage Blower
 NI No. 606 Forage Wagon
 NI 324 Gathering Unit w/314 sheller

MILLER EQUIPMENT CO.

RD 1 Bechtelsville, PA
 215-845-2911

NEW EQUIPMENT PRICED TO SELL



NEW HOLLAND Forage	List	SALE PRICE
1-890 Forage Harvester 2 row head wide or narrow	\$13,400	\$8,950.00
1-782 Forage Harvester 2 row head	\$10,850	\$7,650.00
1-8 Forage Wagon w/234 running gear 31-1350-15 tires	\$6,076	\$4,900.00
2-30 Forage Blowers	\$2,364	\$1,750.00

JOHN DEERE

2-JD 1050 4 wheel drive Tractors (Waiver)	List \$9,880	\$8,395.00
JD 317 Lawn Tractor, 48" Mower Deck (Waiver)	List \$4,070	\$3,400.00
1-790 JD Trank Spreader 145 Bushel		\$2,500.00
1-HD 336-12 ft. Spring Tooth Harrow		\$575.00
JD 440 Liquifire Snow Mobiles	List \$3,350	\$2,650.00

USED EQUIPMENT

1-B 6000 Kubota 4 wheel drive Implements available		\$3,000.00
1-JD 1520 Gas, 14.9x28 rear, 650x16 front	List \$6,200	\$6,000.00
1-JD 7700 S.P. Combine 1977 used 2 yrs., cab. air. new 4 row head - wide		\$32,700.00
1-MF 760 S.P. Combine Super Charge Engine 6 row head - 15 ft. platform		\$39,500.00
1-Fox S.P. Forage Harvester Super "D" w/3 row narrow head 471 Diesel Engine		\$5,500.00

Many used Lawn & Garden Tractors in stock.
 Above in very good condition.
 Waiver on most equipment. Financing available.

M.S. YEARSLEY & SONS, INC.

110-120 E. Market Street
 West Chester, Pa. 19380
 215-696-2990

FARM EQUIPMENT

FARM EQUIPMENT

FARM EQUIPMENT

FISHER ENGINE SERVICE
 3161 Old Phila. Pike 717-768-3729 Bird-in-Hand, PA 17805
AUTHORIZED SERVICE CENTER



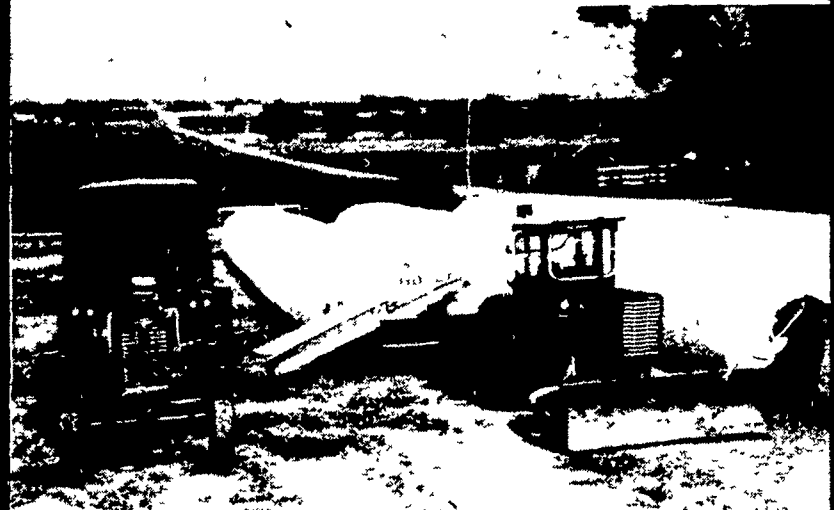
WISCONSIN HEAVY-DUTY ENGINES
 Industrial, Gas and Diesel

NEW SURPLUS ENGINES

SPECIAL V H4D for BOBCAT \$1325.00

WISC. VH4D 30 HP w/Clutch Reduction \$1475 to \$1695

AG-BAG



THE AFFORDABLE SYSTEM DESIGNED FOR THE 80's HIGH MOISTURE STORAGE WHEN & WHERE YOU WANT IT

FEATURES

- ALL HYDRAULIC OPERATION
- EASILY TRANSPORTABLE
- UNLIMITED SEALED STORAGE

STRETCH YOUR FORAGE DOLLAR — THROUGH PREVENTION OF SHRINKAGE AND SPOilage

Exclusive Dealer For Pennsylvania, New Jersey, Maryland Delaware, Virginia, West Virginia

Note: We Need Part Time & Full Time Salesmen for These Areas



AG-BAG DEMONSTRATION

CALL FOR DETAILS



SALE OR LEASING ON ALL NEW EQUIPMENT



"SPECIAL"
 FOX SUPER D w/3 ROW NARROW CORN HEAD, HAY PICKUP AND SNAPPER HEAD
 \$14,900.00

GOOD USED EQUIPMENT

- | | | |
|------------------------------------|---|------------------------------|
| (2) Super D Fox w/corn & hay heads | White 4R Aire Planter | Hesston 1520 Slurry Spreader |
| NH 818 SP w/corn head | Hesston 110 SP win drower excep tional cond must see | Case 655 SP Win drower |
| (2) Hyd side Dump Wagons | Hesston 1520 Slurry S p r e a d e r w/loading impeller 1 yr old | NH 850 Round Baler |
| (2) Forage Dumping Stations | | MM G1000 Tractor Ex Cond |

TRACTORS



SLURRY SYSTEMS

IRRIGATION SYSTEMS

GRAIN STORAGE

• Sales • Service • Parts

BANK FINANCING
 Short and Long Term Leasing Available

FARMERS EQUIPMENT EXCHANGE INC.

We Want To Be YOUR Farm Equip. Co.
 1180 Enterprise Road/East Petersburg, PA 17520
 Lancaster County

Telephone 717-569-8756 717-392-7795

- | | | |
|--|---|--|
| Sales: Frank Walters 717-733-3665 (Res.) | Sales: Ralph Benner 717-786-1384 | Sales: Dennis Shenk 717-872-8376 |
| Sales: Bob McElroy | Sales: Robert Kreider 717-569-1011 (Res.) | Parts & Service Frank Brosemer 717-859-2775 (Res.) |
| Sales: "Skip" Genter 717-397-6306 | | |