

Morton Buildings announces trip winners

GETTYSBURG — Morton Buildings, Inc. recently announced the winners of free Hawaiian trips which were awarded during Ag Progress Days. The winners

are; Cheryl Brenner, R.D. #2, Spartansburg, Pa.; Helen Fogel, R.D. #2, Fombell, Pa.; Donald Macbeth, R.D. #1, Biglerville, Pa

Beef show

(Continued from Page B4)

Cow Calf Pair

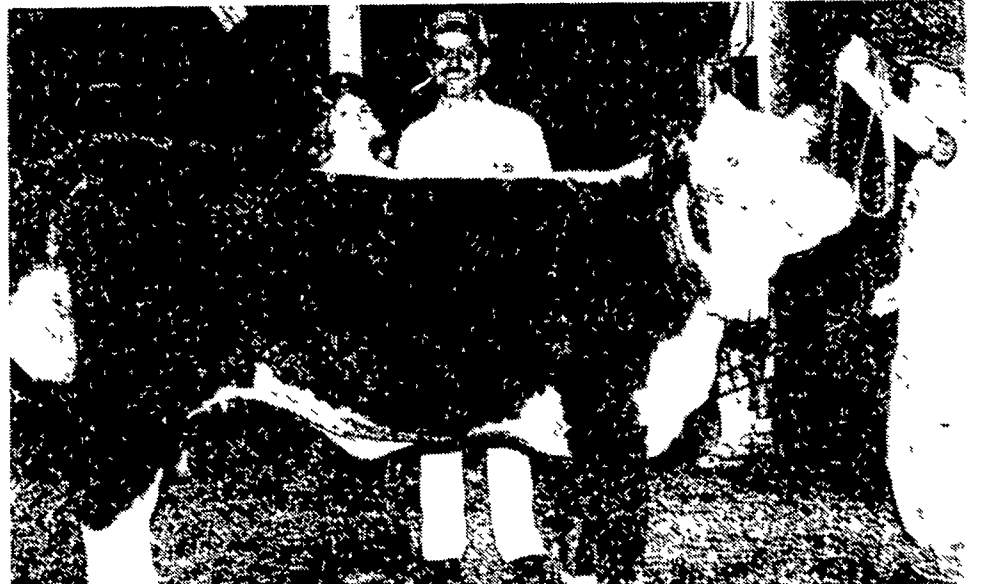
1. Spring Bottom Farm; 2. & 4. Gles Brook Farm; 3. David Shultz.

Jr. Get of Sire

1. Spring Run Farm; 2. David Shultz.



The Grand Champion Female at the Polled Hereford Show held Tuesday evening at the South Mountain Fair went to Spring Bottom Farm's "Westy". She was the first grand champion in the state to be shown with calf at side. Pictured with the champion are Judy Long, showman; Randy Becker, herdsman; Karen Reichart, Adams County Beef Queen; and Becky and Frank Darcey, owners.



The Reserve Grand Champion female was exhibited by Michael Cummings, Westminster, Md. Standing behind GS Beef Builder 68L are Anna and Michael Cummings, parents.

**A BAD HOT WATER HEATER
IN YOUR MILK HOUSE
CAN BE VERY COSTLY**

No Need
For Two
Units —
State
Approved

DARI-KOOL
COOLING SYSTEM

**WE HAVE THE HEAT
RECOVERY SYSTEM FOR YOU
DARI-KOOL THERMA•STOR III
IS A HOT WATER HEATER AND
THERMA•STOR COMBINATION**

It is a Heat Exchanger and an Electric Hot Water Heater Combination

The Therma•Stor Section takes the heat from the bulk tank

compressor. Instead of blowing heat into the air, it goes first to the Therma•Stor and transfers the heat over into the water.

The Hot Water Section is an electric element in the top section which heats your hot water all the time when compressor is not running

• PLANNING LAYOUTS • SALES • INSTALLATION • SERVICE

SHENK'S FARM SERVICE

501 E. Woods Drive Lititz, Pa. 17543 Phone 717-626-1151
Paul Repine - 717-626-2837 Mervin Nissley 717-872-4565
Our Service Trucks Are Radio Dispatched 24 HR. SERVICE OFFERED

Congratulations

TO THE

WAYNE PEFFER FAMILY

RD 5, BOX 454
CARLISLE, PA 17013

On Their All new
51 By 102 FOOT

DAIRY UNIT

Covered With
REYNOLDS ALUMINUM



Featuring

- ★ 67 Free Stalls (4 Rows)
- ★ Double 4 Milking Parlor
- ★ Cornell Gravity Flow Manure System



AGRI-INC.

DESIGNERS & BUILDERS of SYSTEMS

RD 4 EPHRATA, PA 17522
Located In Farmersville
Phone 717-354-4271