

Beef show biggest ever, Spring Bottom Farm takes grands



Spring Bottom Farm exhibited the Grand Champion Polled Hereford bull, Hilger Special 415, a junior yearling. Pictured, from left, are Terry Shearer, judge; State Representative Ken Cole; Randall Becker, herdsman; and Frank Darcey, owner.



The Reserve Grand Champion bull was shown by Blake McCleary, at halter. Also pictured is Blake's father, Bill, with Judge Shearer.

BY SHEILA MILLER
 ARENDSVILLE — The largest Open Breeding Beef Show ever was held at the South Mountain Fair on Tuesday evening. Over 50 entries of the dominating Polled Hereford breed competed, along with several Santa Gertrudis entries.

Spring Bottom Farm, Fairfield, captured the Grand Champion honors in the Polled Hereford Show in both the female and bull divisions.

The number one bull was Hilger Special 415, an April 7, 1979 junior yearling. Judge

Terry Shearer, from Pigeon Hills Farm, Abbottstown, tagged this bull as Junior Champion before selecting him over the two-year-old Senior Champion for the Grand.

Judge Shearer followed the Spring Bottom Farm champion with the Senior Champion, SBF Royal Rancher, owned by Blake McCleary, Biglerville, for the Reserve Grand Champion ribbon.

"Rancher", calved May 1978, was bred by Spring Bottom Farm. He is the sire of the Reserve Bull Calf Champion, SBF Ryl Ran-

cher, exhibited by Spring Bottom Farm.

The reserve calf champion, born May 10, 1980, teamed up with his dam, VH Westy Hilger, and together the pair walked off with the Grand Champion honors in the female division.

This was the first time a cow and calf pair class was held at a Pennsylvania Polled Hereford show, according to Association President Frank Darcey.

"Westy", owned and shown by Spring Bottom Farm, adds the South

(Turn to Page B4)



The Santa Gertrudis champions at the South Mountain Fair were exhibited by Erik Quanbeck (wearing hat). His brother Paul is holding the Bull Calf Champion while father Jim is at the halter of the Grand Champion female.

The New **Zero** CONCORD MILKER



Improve herd health, save time and labor, produce cleaner, better tasting milk and make more money

STABLE VACUUM Allows inflations to massage teats, prevents ballooning, crawling up, choking teats and injuring udder.

NO AIR IN THE MILK LINE because one vacuum milks, other vacuum moves the milk from teat to tank without injecting air at the claw.

TOTAL AUTOMATIC WASH with push button control. Completely automated self cleaning and sanitizes your entire system without disassembling.

Together these three advantages — available only with ZERO's new Concord Twin Vac Milking System — offer you the quickest and surest way to modernize your milking operation for improved herd health, cleaner milk and better profits. For more information, see your nearby Zero Dealer.



Zero Manufacturing Company
 Washington, Missouri 63090
 U.S.A.
 TEL 314 239 6721
 Telex 34 2475

Regional Sales Manager

Ray Kuhns
 67 Roland Ave
 Chambersburg, PA 17201
 717-264-3814

Distributors

Pennsylvania
Donald Everitt
 Mifflintown
 717-436-2561

W.F. Garing Co.
 Honesdale
 717-253-0187

Marvin J. Horst
 Lebanon
 717-272-0871

W & J Dairy Sales
 Oxford
 717-529-2569

New Jersey

Hockenbury Electric
 Ringoes
 201 782-5950

Delaware

Hlott Refrigeration
 Wyoming
 302-697-3050

Maryland

Laurel Run Farm Supply
 Grantsville
 301-895-5567

Roop & Sons
 Linwood
 301-775-2127

Warfield's Refrigeration
 Frederick
 301-663-0088



TERRE HILL SILO CO. INC.

Serving The Farm Community For Over One-Half Century
 TERRE HILL, PA. 17581

AUTHORIZED DEALER

Patz

- Manure Spreaders
- Manure Stackers
- Slurry Manure Pump
- Gutter Cleaners
- Circular Feeders
- Material Movers & Conveyors
- Silo Unloaders
- Cattle Feeder & Conveyors
- Overhead Cattle Feeders

Fiberdome



FIBERGLASS BULK STORAGE BINS



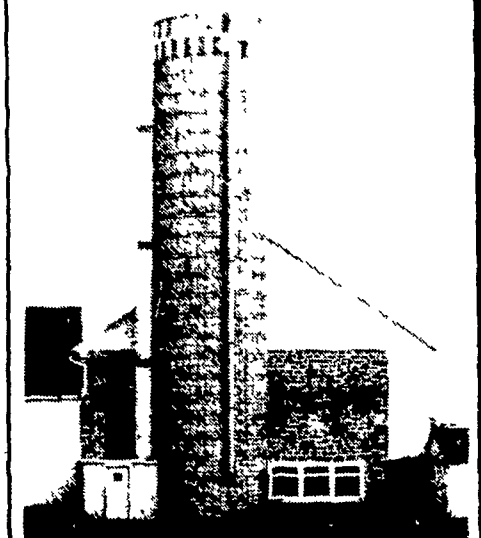
FORAGE FUNNEL



FIBERGLASS CALF HUTCH

ALSO — FARM SILO ROOFS & ACCESSORIES

Manufacturers and Erectors of Terre Hill TRI-RIB STAVE SILO



FOR OLD FASHIONED PRIDE OF WORKMANSHIP
 ★ SEE AND COMPARE THE PROVEN INTERIOR SILO FINISHES

CALL - TERRE HILL (215) 445-6736 OR SALESMAN - JAMES ESBENSHADE - 717-464-2090