

Public Sales Register

Closing Date - Monday, 5:00 P.M.
of each week's publication

SAT, SEPT 20 - 9.00 A.M.
Public Sale - 3rd Annual Fall
Machinery and Tool Sale
Located at Stewartstown Rd
1, Pa near New Park, PA.
Robert L. Sechrist.

FRI SEPT 19 - 6:30 P.M. Con-
signment of Feeder Cattle &
Feeder Pigs at Keister's Mid-
dleburg Auction Sales, Inc., Rt
522, 3 miles East of Mid-
dleburg, 5 miles West of Selin-
grove, Pa. Don & Walt Keister,
Owners Ray Long & Dave Innes
Auctioneers.

FRI SEPT 19 & SEPT. 20
Public Estate Sale of Fine Anti-

ques, Corner Cupboards,
Decorated Furniture, Quilts and
Household Goods Sale for
G.H. Thrush, Houtzdale, PA
Clearfield Co

FRI & SAT SEPT 19 & 20 -
9.00 A.M. Public Auction of
Farm Equipment and Antiques
I-80 Exit 37 - Mifflinville, Pa.
Come into town go to Market
Street, watch for SALE signs &
Arrows, turn toward Hettler-
ville, Sale is 1 1/4 miles out of
town, Sale held under large
tent Donald R. McMurtree &
Arlo McMurtree, Sellers Nevius
Auction Service, Auctioneer

FRI. & SAT SEPT 19 & 20 -
9:00 A.M. 2 Day Public Auction
of Farm Equipment, Office
Equipment and Shop Equip-
ment Located in Mifflin Co,
along Route 322, at Milroy, Pa
Aumiller Sales and Service,

Owner. Mark Glick, Auc-
tioneer.

SAT SEPT 20 - 9.30 A.M.
Towne Tractor Fall Auction
Sale Freehold, NJ, Rt 33,
Monmouth Co Consignments
Wanted

PUBLIC SALE

OF RUTT'S KITCHEN CABINETS,
QUILTS, NEW TOOLS AND
HARDWARE, GROCERIES,
NEW LAWN, GARDEN EQUIPMENT
SATURDAY, SEPTEMBER 20

9:30 A.M.

Goodville Community Fire Co. Sale
Sale held at the fire hall, along Rt. 23, two
miles east of Blue Ball, East Earl Twp., Lan-
caster Co., PA.

Hahn 19" 3 1/2 H.P. Mower; Lawn Lion 20" 3 H.P.;
Hahn Tillers 3 1/2 H.P.; 4 - Black Boards, 54" x 68"; 6'
Sliding Glass Door with track; Wall Counter 20" deep x
41" high x 5' long; Old Beams 10" x 10" and 4" x 6"; 9'
Overhead Garage Door; 13 1/2' Fire Escape Steps;
Glass Counter 26" deep x 38" high x 10' long with Glass
Shelves; Heavy Oak Counter 25" deep x 37" high x
15 1/2' long with drawers; Bedroom Suite; Metal Sink
with top; Electric Space Heater; English Saddle;
School Desk; Old Trunk; Artificial Fireplace; An-
drons and Logs; New Rug Remnants; Vinyl Flooring;
Carpet Samples.

Rutt's Cabinets, Drawers, Doors and Hardware.

QUILTS

Trip Around the World, Star, Applique, Counter Pane;
Several Crib Quilts and Comforters.

NEW TOOLS

Farm, Garden, Carpenter, Mechanic Tools such as
S.K., Lufkun, Stanley, True Temper.

App. 5 hrs. of selling Misc. Groceries, Canned Goods,
Houseware.

NOTE: This is only a part listing. Come early and en-
joy the day with us.

Items sold on commission. Donations appreciated.
Please bring items evenings week of sale or Friday,
Sept. 19 all day. For pick up service call: Menno
445-4450 or Walt 763-3657.

SALE ORDER: Starting time 9:30; Groceries 9:45;
Tools 10:15; Mowers 1:00; Quilts 2:00; Cabinets 2:30.

Sale By
GOODVILLE FIRE CO.

Local Auctioneers

Lunch Served by Ladies Aux.
Not Responsible for Accidents

PUBLIC SALE

ANTIQUES, FURNITURE, & GUNS

SAT., SEPT. 13, 1980

9:30 A.M.

3056 W. Chestnut St. Lebanon, Pa. rear of the
Dairy Queen

Krakauer upright piano, 2 piano stools w/claw feet,
Harmony oak table model phonograph, book shelves,
oak buffet, 4 dr. desk, chest of drawers, oak wash
stand, oak chairs, table dresser, china closet, waterfall
vanity dresser, pine blanket chest, wood chest, oak
pedestal, steamer trunk, saddler's bench, wooden
kegs, plank seat rocker, mirror w/oak frame, jelly
cupboard, paper roll stand, parlor stand w/brass trim,
wooden barrel stands, wooden butter churn, butcher
bench, gammeling sticks, pig scrapers & bench, iron
kettle w/stand, ladles, 2 meat grinders, wooden hand-
operated sausage stuffer, old meat chopper w/knives,
tin flour bin, wooden lard press, Hershey milk can, old
gas cans, wooden wagon jack, desk chair, wooden
child's crib, porch rockers, lg. dinner bell, 8 day clock
w/weights (cherry case), iron shelf alarm clock, an-
niversary clock, 1858 Muller 31 day regulator wall
clock, four 8 day shelf clocks, 2 mantle clocks, banjo
clock, cuckoo clock, elec. ship clock, alarm clocks, 5
flow blue plates (Holland), 1902 Montgomery Ward
catalogue no. 70, 4 German almanacs, 5 key wind
pocket watches, 3 pocket watches, tin type picture &
frame, railroad lanterns, kerosene lanterns, Gone
w/the Wind lamp (no shade), old deeds, German
baptismal certificate (1817), reverse painting (US
Captial), two 15 gal. crocks, sm. crocks, 4 red ware
crocks, iron tea kettle, trivets, sad irons, waffle irons,
copper bottom tea kettle & boiler, 2 broad axes, 1 adze,
pick axe, cherry seeder, apple peeler, porcelain wash
bowl, homemade soap, chamber pots 3'x4' display
case, archery equip., 2 air rifles, German bayonet &
swords.

GUNS: 2 Stevens single shot target pistol, four 32 cal.
6 shot pistols, four 38 cal. pistols, J.E. Randal 16 ga.
double barrel P-38, 5 single shot 22 rifles, M-1 Army
rifle w/bayonet, 12 ga. single barrel lever action
hammer gun, Parker double barrel 12 gal. hammer
gun, Ideal 12 ga. single barrel hammer gun.
Many more items too numerous to mention.

Refreshments available - not responsible for accidents.

ROY C. KILLINGER
273-7479 after 3 P.M.

Ralph B. Heisey, auctioneer
838-5083

For W. Frank & Grace Simmers
OUTSTANDING BUSINESS PROPERTY
1± In High-traffic Pa. Dutch Country

ABSOLUTE AUCTION

No Minimum Price
"GUERNSEY FARM RESTAURANT"
FULLY-EQUIPPED - IN OPERATION

Plus Superb 3-Bedroom Apt./Residence.
Paved Parking

656 E. MAIN ST., (Rt. 23)
New Holland, Lancaster County

Approx. 3 Mi. W. of Rts. 23 & 322. 7 Mi. E. of
Lancaster. Opp. Garden Spot HS. Just W. of
Earland Indus'l. Park. STRATEGIC LOCATION.
Adj. new Yoder's Country market (under const.)

Well-maintained. Air-cond. Dining Room (seats
approx. 70). Bright, modern kitchen. Exceptional 3-
Bedroom Apt./Residence: 2 Baths; modern Kitchen;
paneled Office.

INSPECT DURING BUSINESS HRS.

9 AM to 10 PM DAILY

SALE on Premises: WED., SEPT. 10 at 12 Noon

10% DEPOSIT AT SALE

REQUEST ILLUSTRATED BROCHURE

Louis Traiman
AUCTION COMPANY

BROKERS - AUCTIONEERS

1519 Spruce St. Philadelphia, Pa 19102
(215) 545-4500

PUBLIC SALE

OF REAL ESTATE
AND FARM MACHINERY.

The undersigned, David C. Cleaver and
Kenneth F. Lee, court appointed trustees for
Lee Roy Beck and M. Chloe Beck, will sell at
public sale real estate and farm machinery
located in Montgomery Township, Franklin
County, Pennsylvania, situated 1.5 miles west
of the Village of Claylick on the Blair Valley-
Kaiseyville Road on:

SATURDAY, SEPTEMBER 13
at 10:00 A.M.

112.75 acre farm with recently remodeled two
bedroom farm house, barn, and several out buildings.
Real estate will be offered for sale at 10:00 A.M., with
sale of the following farm machinery to follow:

John Deere Tractor, John Deere two row cultivator,
John Deere two row corn planter, John Deere three
bottom plow, manure spreader, Disc, Harrow, grain
drill, New Holland hay baler, John Deere Hay mower,
Flat wagon, corn picker, hay rake, scalding trough.

Inspection of the real estate and farm machinery will
be held on Saturday, August 30, 1980, from 1:00 p.m. to
4:00 p.m.

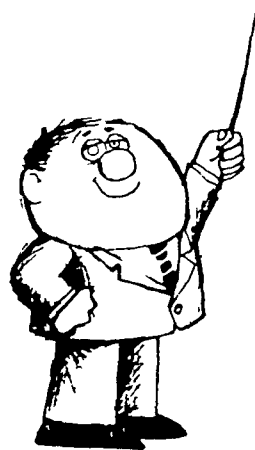
Terms of Sale of Real Estate: Upset price:
\$95,000.00. Down payment of \$10,000.00 to be paid by
cash, certified, or treasurers check at time of sale.
Balance of purchase price to be paid and final set-
tlement to be held within 45 days of sale

For location map or additional information, call or
write Kenneth F. Lee, 37 W. Queen St., Chambersburg,
Pa. 17201. Phone 717-264-3290.

LEE ROY & M. CHLOE BECK

Trustees
David C. Cleaver and
Kenneth F. Lee

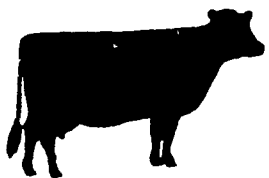
J. Robert Meyers, Auct.
Lee Smith, And Leon Alleman, Clerks



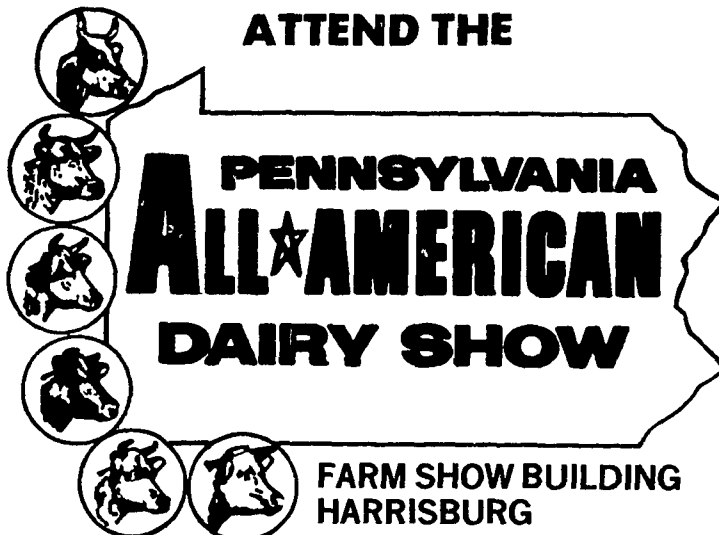
**A LESSON
WELL
LEARNED...**

**LANCASTER
FARMING'S
CLASSIFIED
ADS
GET RESULTS!**

Phone:
717-394-3047
or
717-626-1164



ATTEND THE



**PENNSYLVANIA
ALL-AMERICAN
DAIRY SHOW**

FARM SHOW BUILDING
HARRISBURG

SEPTEMBER 22 - 26, 1980

SCHEDULE OF EVENTS

Wednesday, September 24

9:00 A.M. - National Milking Shorthorn
Show

9:00 A.M. - Eastern National Ayrshire
Show

6:00 P.M. - PAA/Dairy Shrine Hospitality
Hour - Penn Harris Motor Inn

7:00 P.M. - PAA Recognition and Dairy
Shrine Honors Banquet - Penn Harris
Motor Inn

Thursday, September 25

9:00 A.M. - PAA Jersey Show

9:00 P.M. - All-American Holstein Show
"Eastern National" (through dry cow
classes)

3:30 P.M. - International Visitors Recep-
tion and Dinner-Schmidler's Restaurant
Camp Hill

7:00 P.M. - All-American Holstein Sale

Friday, September 26

8:00 A.M. - All-American Holstein Show
"Eastern National" (milking classes
and groups)

Monday, September 22

8:00 A.M. - Invitational Youth Judging
Contest (4-H, FFA, and Intercollegiate)

9:00 A.M. - Pennsylvania Junior Dairy
Show

7:00 P.M. - PAA Invitational Brown Swiss
Sale

7:00 P.M. - National Milking Shorthorn
Junior Show

Tuesday, September 23

9:00 A.M. - All-American Brown Swiss
Show "Eastern National Brown Swiss
Junior Show"

9:00 A.M. - All-American Guernsey Show

10:00 A.M. - Pennsylvania 4-H & FFA
Dairy Judging Forum

6:30 P.M. - Pennsylvania Dairy Princess
Coronation - Penn Harris Motor Inn

Plan To Be Present