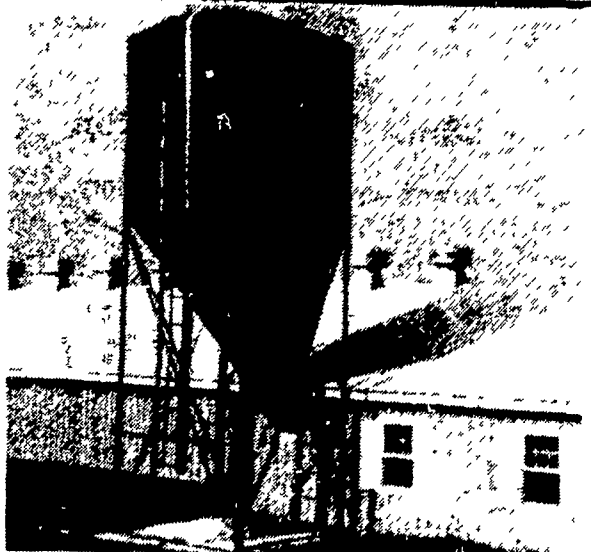


# Adams Co. DHIA

(Continued from Page D14)

Stoner Bros Dairy					
Flip	3	8-0	305	17,400	39 670
Lynet	3	8-7	296	19,988	32 649
Quinta	3	4-0	305	22,953	32 739
Megs	3	4-5	290	21,497	37 794
Fannie	3	3-10	287	15,222	46 703



## CUSTOM MADE FEED BINS

- Made of 14 Gauge Steel
- Longer Taper for Easier Flow
- All welded seams which make it water proof and rodent proof
- Can be installed inside or outside building
- Most installations can be made without auger.

**WILL DELIVER AND INSTALL ANYWHERE**

FOR FREE ESTIMATE CALL

**STOLTZFUS WELDING**

717-345-4854

We Sell, Service & Install

Bucket Elevators, Grain Augers, M-C Grain Dryers, Distributors, Pipes & Accessories.

Joy	3	3-7	305	17,196	36 624
Lilac	3	3-8	278	19,428	39 757
19	3	2-10	305	18,138	41 740
10	3	2-7	305	15,861	44 691
Brown Valley Farm					
Value	3	3-5	305	20,200	35 709
OLinda	3	2-0	305	15,310	42 643
Piney Lane Guernseys					
Preambl	2	7-8	305	13,992	56 789
Mgaldie	2	7-2	305	13,387	52 702
Honest	2	6-4	305	14,247	46 652
Pod	2	5-6	305	14,320	50 716
Ada	2	4-2	305	14,578	53 771
Gloria	2	3-10	305	13,129	52 678
Nedra	2	3-1	305	13,883	47 651
Kitty	2	12-4	305	12,546	53 661
M J Starner & Sons					
203	3	6-10	268	18,768	37 701
81	3	4-0	305	15,592	43 674
205	3	4-2	305	18,296	37 684
148	3	3-9	305	17,635	46 803
121	3	3-1	305	17,476	43 747
Frank Ludwig					
Bea 153	3	4-9	305	12,886	50 648
Donald Todt					
Sandy	3	10-8	305	17,090	36 615
5	3	4-0	291	18,242	34 628
Kraybill Miller					
Amy	3	3-2	305	17,939	37 658
Kling Ayr Farms					
Dorothy	3	8-1	292	20,465	37 751
Happy	3	4-5	305	15,730	39 618
Buttonwood Farms					
113	3	4-7	275	17,427	37 651
Lazie	3	7-6	305	15,597	44 689
Supreme	3	3-1	304	15,558	41 642
James E Miller					
Nelly	2	3-4	302	12,738	51 650
Roy A Weaner, Jr					
64	3	5-11	297	18,577	41 762
53	3	3-8	305	13,108	47 615
Lagging Stream Farm					
Dainty	3	9-3	305	17,168	39 663
Jewel	3	7-5	305	17,670	37 662
Eileen	3	3-1	305	14,904	40 602
John J Hess					
70 R	3	8-4	289	15,483	39 610
37 R	3	5-8	279	17,181	37 643
117	3	4-9	305	16,091	38 615
26R	3	6-2	305	17,689	38 669
William G Inskip					
71	3	4-0	278	14,327	46 659
27	3	3-0	305	18,113	39 713
45	3	2-5	305	14,866	43 634
72	3	2-5	305	12,490	49 615

## Lancaster Farming, Saturday, September 6, 1980—D15

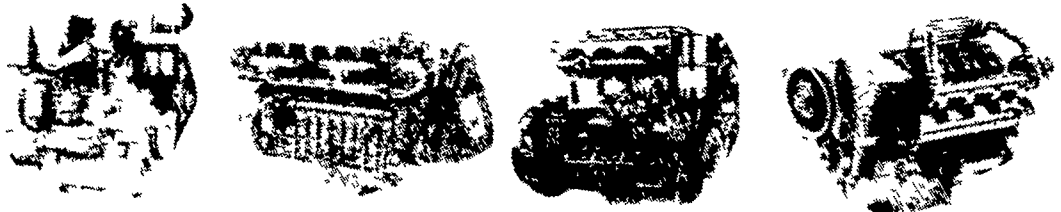
Glenn & Janet Lippy					
Gerry	3	9-1	305	18,506	35 645
Ray Dutterer					
Liz	3	4-2	305	21,294	33 708
Blackie	3	5-2	285	18,663	33 619
Shamrock Farm					
9	3	5-8	305	21,493	37 798
63	3	5-0	305	16,995	36 613
71	8	3-2	305	19,704	33 645
35	3	2-8	305	15,093	40 601
El Rho Farm					
Whity	3	7-4	305	19,292	44 841
Ann	3	8-11	305	20,166	36 729
Jackie	3	6-9	303	20,428	36 729
Paula	3	8-8	305	17,727	39 686
Melissa	3	3-4	305	17,270	35 606
Starlit	3	6-2	305	16,496	41 682
Robert & Linda Meyers					
98	3	6-4	305	18,461	34 625
Wayne H Rodgers					
Ella	3	8-4	305	18,718	34 633
Roger L Sprague					
Diani	3	4-4	305	18,031	37 666
Pleasant Acres					
44	3	8-2	305	17,125	40 682
48	3	8-1	302	14,786	41 604
Jonas M Beiler					
Bessie	3	7-1	305	15,016	41 621
Weim Sharr Farms					
51	3	5-2	305	19,188	34 644
Grove Bros					
22	3	7-3	305	17,575	35 608
34	3	6-8	286	18,629	35 652
78	3	3-8	305	20,286	32 648
17	3	3-2	305	16,335	39 633
25	3	3-2	304	16,071	40 639
Eugene Witter					
Lorna	3	6-11	305	15,138	40 603
Sylvia	3	4-11	305	20,320	35 704
Tina	3	3-2	305	14,764	41 609
Oscar E Mehring					
Kate	3	4-10	305	17,206	41 698
Leroy Deputy					
Cheryl	3	5-8	305	18,564	39 715
Janice	3	5-9	305	18,284	38 696
Maude	3	9-3	305	22,969	38 870
Betsy	3	4-11	305	26,534	34 899
Lynn	3	2-8	305	19,777	39 764
Rita	3	2-11	305	19,122	35 678
Ruby	3	2-0	305	19,240	33 632
Phobe	3	2-8	305	20,111	32 653
Marion	3	2-10	305	22,352	28 627
Claude Holmes Jr					
Tidy	3	5-6	305	14,915	53 784

(Turn to Page D16)



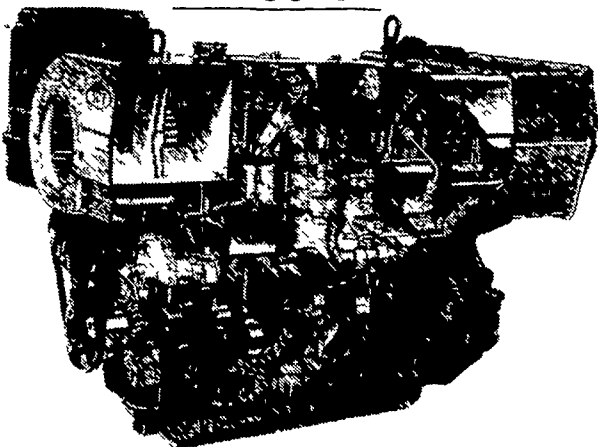
## REPOWER With VM DIESEL

Harvesters, Haybines,  
Tractors, Cornpickers,  
Balers, Hydraulic  
Systems, Corn Binders  
Choppers

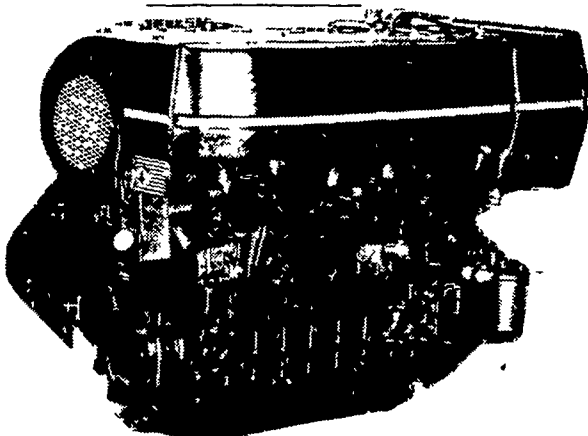


## All New HR Series

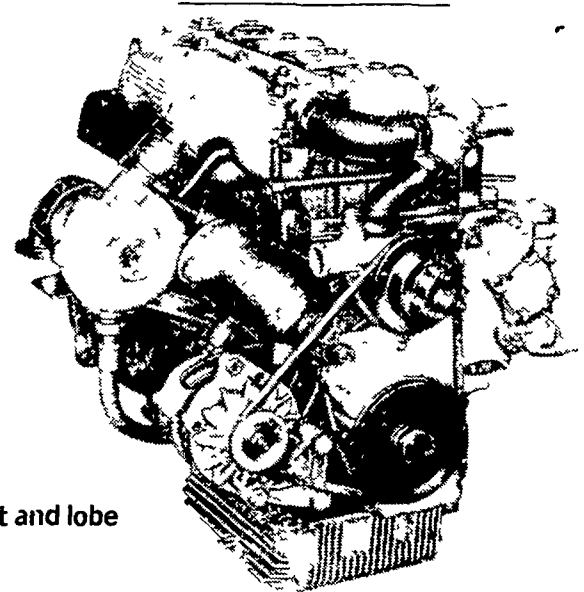
OIL COOLED



AIR COOLED



WATER COOLED



### General Features:

- Integrally cast cylinders with inserted and removable wet type cylinder liners
- Light hypereutectic alloy pistons
- Extra-resistant steel connecting rods alloyed with special alloy head bearings
- Surface hardened steel crankshaft
- Drop-forged, casehardened and tempered steel camshaft
- Anti-friction cast-iron tappets alloyed
- Cast-iron tunnel type crankcase
- Rotary injection pump with mechanical governor
- Force-feed lubrication with built-in circuit and lobe type pump
- Diaphragm pump feed
- Oil and fuel filters with integral type element.

Special structure and patented engine with consequent increases in performance and easier operation with low weight/output ratio low smoke emissions.

Engine based on a design "modulus" formula which allows a maximum parts standardization and interchangeability.

### USED DIESELS

- SR 2 Lister
- SR 3 Lister
- HRS 6 Lister
- 1 Cylinder Deutz
- DVA 2200 Stanzi

VM 1306 V SERIES

## QUEEN ROAD REFRIGERATION

Box 67, Intercourse, PA 17534  
Phone: John D. Weaver - 717-768-9006 or 768-7111  
or Answering Service - 717-354-4374

**24 HOUR  
SERVICE**