

# Bradford Co. DHIA

(Continued from Page D10)

Satin	3	5	302	21,363	763
Brandy	3	4	305	19,426	729
Trudy	3	4	297	18,163	746
Junket	3	2	305	17,446	641
Alfred Sparling					
Bugs	3	5	305	19,315	843
Lyle Harkness					
85	3	4	305	18,016	752
90	3	3	305	16,300	720
Roof Farms					
Cornia	3	2	305	15,103	670
Braund Valley Farms					
Mimi	3	5	305	21,574	907
Toni B	3	3	305	18,394	715
Missy	3	2	305	15,857	610
Eileen	3	2	305	15,660	641
Vernalder Farm					
Wilma	3	6	305	17,715	735
Ariyn Wilbur					
Bon Jr	3	3	305	18,282	710
Allen S Andrews					
507	3	8	305	22,104	727
Leona Holsteins					
Barb	3	2	304	18,546	673
Smart	3	2	303	15,883	630
Earl Browning Farm 2					
Merry	3	5	305	20,230	704
Kenneth Walters & Sons					
12	3	5	305	16,247	703
27	3	4	305	21,269	713
24	3	4	305	18,785	837
74	3	2	305	13,892	666
79	3	2	305	14,983	633
52	3	2	305	18,905	681
Hopps Hill Farm					
42	3	9	305	19,206	849
Ronald P Davis					
Reina	3	7	305	18,129	761
Willard Fassett					
34	3	5	305	17,680	788
Ponder Hill Farms					
Imperial	3	3	305	14,702	721
Chief	3	3	305	13,618	708
Hugh & Russell Andrus					
192	3	6	305	18,693	775
92	3	4	305	15,771	713
Donald Jennings Sr					
49	3	3	305	18,510	747
08	2	2	305	16,978	735
26	2	2	305	19,776	662
47	3	2	305	18,951	753
Donald Jennings Jr					
69	3	7	305	16,378	740
11	3	2	305	18,612	677
146	3	2	305	16,336	661
147	3	2	305	17,974	670

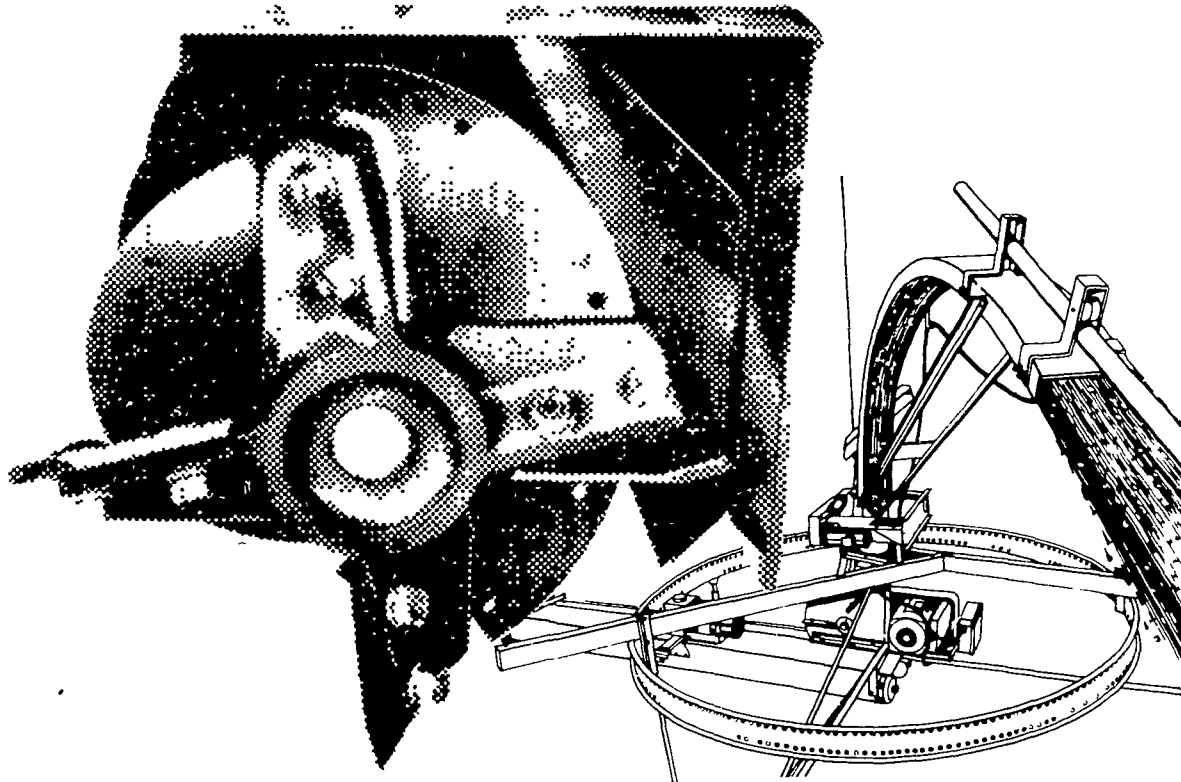
## Lancaster Farming, Saturday, September 6, 1980—D11

3	3	2	305	18,681	759
2	3	2	305	18,771	650
Snowcrest Farm					
Jeanie	3	6	305	22,045	877
Lewis & Lois Alderson					
Cupcake	3	4	305	27,823	1042
Gerald W Twigg					
131	3	2	288	14,322	653
Shores Brothers					
Connie	3	4	298	20,625	718
Mary	3	4	305	17,681	720
Leslie Freeman					
9170	3	4	305	17,387	744
Frank Purcell					
Ruby	1	6	305	16,461	705
Layton Calkins					
Pam	3	2	286	16,177	666
Kevin L Ferris					
Hope	3	4	305	20,386	787
Calvin & Rick Shaffer					
16	3	6	258	19,599	761
Fred Shaffer					
Gurtie	3	4	305	19,181	730
Lewstone Farms					
Fern	3	3	294	14,547	720
Parks Knoll Farms					
32	3	6	305	17,723	719
Raymond A Scrivens					
2	3	8	305	19,140	777
R Brown & R Ely					
Polly	3	2	305	14,997	619

# Volumatic<sup>®</sup> III

## silage distributor-unloader

### by JAMESWAY<sup>®</sup>



## Cold weather performer

Another reason why all ring-drive silo unloaders are not alike: New four-blade chipper wheel easily removes hard-packed or frozen silage from the silo wall. Blades can be reversed to double their cutting life. Wheel cast of rugged ductile iron to take the daily shock of cutting through stubborn silage.

See us for systems and service that help make the good life better.

### AGRI-EQUIP.

RD4, Farmersville, Ephrata, PA  
717-354-4271

### DEPENDABLE MOTORS

Honey Brook, PA  
215-273-3131  
215-273-3737

### ROVENDALE SUPPLY

RD 2, Watsonstown, PA 17777  
717-538-5521

### I. G. SALES

Rt. 113, Box 200  
Silverdale, PA  
215-257-5135

### HENRY S. LAPP

RD1, Cains, Gap, PA 17527  
717-442-8134

### SOLLENBERGER SILOS

RFD 2, Chambersburg, PA  
717-264-9588

### G. HIRAM BUCHMAN, INC.

Rte 519 - N. off Rte 46  
P O Box 185  
Belvidere, NJ 07823

### HARRY L. TROOP

Rt 1 Cochranville, PA 19330  
215-593-6731

### J. A. SWOPE

Box 121, RD1  
Myerstown, PA  
717-933-4758

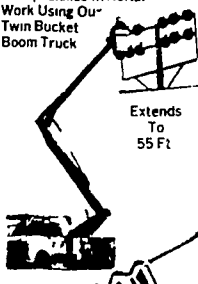
### ERB & HENRY EQUIP., INC.

22-26 Henry Avenue  
New Berlinville, PA  
215-367-2169

### DETWILER SILO REPAIR

Rt 2, Newville, PA  
717-776-7533

We Specialize In Aerial Work Using Our Twin Bucket Boom Truck



Extends To 55 Ft

**ELECTRICAL CONTRACTING**

Specializing In

**AGRICULTURAL WIRING**

Also Residential, Industrial And Commercial Work  
Free Estimates

**C. M. HIGH CO.**  
320 King St  
Myerstown, PA 17067  
Phone 717-866-7544

We Have Poles In Stock  
25 30  
35 & 45



SALES & SERVICE

## MILLER'S REPAIR

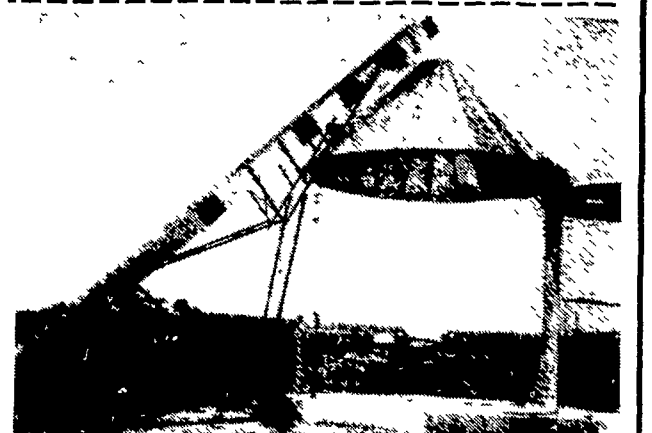
1 Mile North of Bird-in-Hand  
8 Miles East of Lancaster

RD1, Bird-in-Hand, PA      PH: 717-656-9013

WISCONSIN

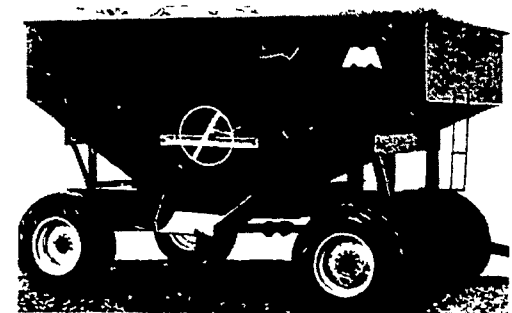



**SALES & SERVICE**



**ZIMMERMAN PORTABLE ELEVATORS**  
Will Carry Your Corn & Hay  
28 ft. . . \$1050  
32 ft. . . \$1095  
★ 36 ft. and 40 ft. also available

**BEHLEN CORN CRIBS**  
1200 Bu. . . \$839  
1600 Bu. \$1059



**165 Bushel Gravity Box \$425**  
**6 Ton Wagon \$395**  
**Combination - \$800**  
Less Tires