

## Bradford Co. DHIA


(Continued from Page D9)

Merle Bacon					
Julie	3	4	305	17,071	755
Veara	3	2	305	18,466	683
Elwin Roberts					
59	3	2	305	16,212	651
Jeff & Karen Hale					
Moon	3	6	305	19,548	713
Lucy	3	2	305	16,203	659
Glen & Arlen Landis					
Vickie	3	9	305	17,661	709
Jenifer	3	5	305	21,688	705
William Brown					
Orbata	3	8	263	19,135	834
Della	3	2	305	15,608	680
Angel	3	3	305	20,561	710
Flop	3	2	305	20,261	730
Sprite	3	2	297	17,723	666
Glenda	3	2	305	15,022	637
Stanley Saxton					
Darlene	3	6	305	21,705	760
Eleanor	3	4	305	20,948	747
Dawn	3	2	305	16,936	675
Alma	3	2	305	15,995	702
Lou	3	2	305	17,395	647
Ford Ridge Farm					
Misty	3	4	279	17,477	739
Yorky	3	7	305	16,912	729
AB	3	5	274	18,610	701
Clarence & Keith Crain					
Gigi55	3	8	289	19,094	722
Bouquet	3	4	305	18,931	701
Richard Bristol					
Dolly	3	7	301	21,437	752
Henreta	3	3	305	13,987	700
Loretta	3	2	305	12,742	638
Leonard-Robert Cole					
Specks	3	7	302	16,869	722
Donald E. Harkness					
Dicky	3	4	305	21,312	989
Lucinda	3	2	305	16,929	644
Milford Kinsman & Son					
Ava	3	3	305	20,875	792
Bess	3	2	305	17,655	708
Lyle D. Monroe					
50	3	7	305	18,829	714
14	3	5	305	19,786	728
31	3	4	305	22,127	786
33	3	3	305	18,805	753
Gerald Stethers					
21	3	6	305	23,681	867
16	3	4	305	20,040	831
28	3	2	305	16,367	707
John Culver					
Nora	3	4	305	20,094	754
Oar	3	4	305	20,494	827
Jesse M. Gardner					
Dorie	3	3	305	16,698	729
Marinus DeBruin					
Patsy	3	4	305	20,858	917
Festina	3	3	303	19,518	757
Buffy	3	2	305	15,567	615
Mia	3	3	299	16,161	751
Richard H. Packard					
Bo Bo	3	8	305	20,323	715
Missy	3	5	305	19,625	779
Beckee	3	4	305	20,992	752

Billow	3	3	305	19,380	820
Bea	3	3	305	23,059	928
Bolero	3	2	305	14,598	641
Fivebrooks Farm					
Luella	3	6	305	19,915	854
Alvina	3	6	305	19,451	782
Elinor	3	4	305	19,376	866
Peggie	3	3	305	23,612	814
Marbeth	3	2	305	17,625	634
Melissa	3	2	305	17,723	678
Robert H. Whipple					
Marvel	3	6	305	23,634	914
Jude	3	2	305	18,344	645
Ralph Tewksburg					
168	3	6	305	17,576	739
Ray Keeney					
223	3	5	305	20,009	735
Richard B. Reagan					
Misty	3	6	305	19,129	751
Alsi	3	2	305	18,504	620
Frank Herman Jr					
Samanth	3	5	305	18,667	787
Richard D. Wheeler					
Trill	3	7	305	20,598	788
William J. Smith					
Lena	3	4	305	23,189	768
Lady	3	2	305	14,609	620
Sheldon L. Millard					
162	3	8	305	20,333	722
Paul D. McCoy					
109	3	4	300	19,643	706
Harvey Hennip					
Judy	3	3	305	20,439	776
Art & Clay Harkness					
Emma	3	5	233	16,810	762
Garry & Nancy Johnson					
49	3	9	305	19,944	747
30	3	4	305	22,202	923
Kenneth L. Prince					
5203	3	9	305	20,693	1020
Claude W. Arnold					
49	3	4	305	17,532	726
George M. Shell					
Bonnie 7	3	2	298	18,019	667
Tabbyr 1	3	2	305	16,605	631
Terrisw	3	2	305	14,718	630
Lennir2	3	2	305	15,563	677
Jolyw10	3	2	305	15,391	670
R. Allen Rightmire					
Betsey	3	7	305	16,846	736
Raymond Hopppaugh					
Ann	3	5	305	22,724	713

(Turn to Page D11)

**FRESH COWS**      **EVERY WEDNESDAY IS**      **SPRINGERS**



# DAIRY DAY

**AT NEW HOLLAND SALES STABLES, INC.**  
New Holland, PA

If you need 1 cow or a truck load, we have from 100 to 200 cows to sell every week at your price. Mostly fresh and close springing holsteins.

Cows from local farmers and our regular shippers include Marvin Eshleman, Glenn Fite, Kelly Bowser, Bill Lang, Blaine Hoffer, Dale Hostetter, H.D. Matz, and Jerry Miller.

**SALE STARTS - 12:00 SHARP**  
Also Every Wednesday,  
**Hay, Straw & Ear Corn Sale - 12:00 Noon**  
All Dairy & Heifers must be eligible for Pennsylvania Health Charts.

For arrangements for special sales or herd dispersals at our barn or on your farm, contact  
**Abram Diffenbach, Mgr.**  
717-354-4341  
OR  
**Norman Kolb**  
717-397-5538

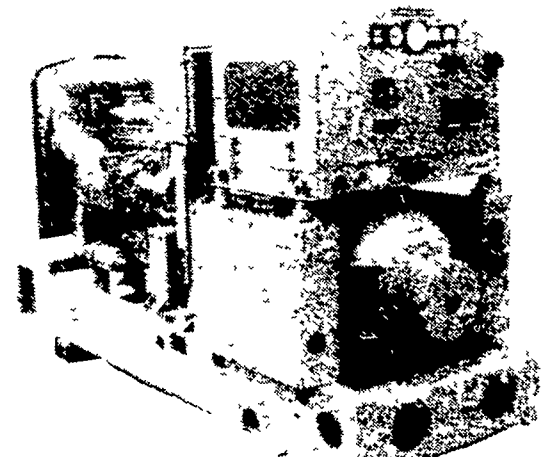
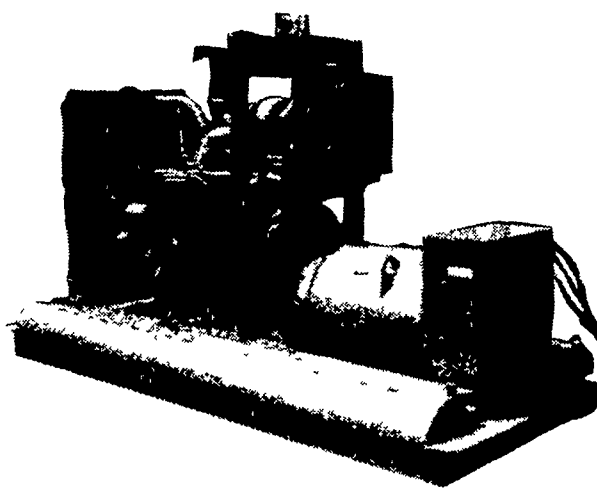
**HEIFERS**      **BULLS**

## BALANCED DESIGN ELECTRIC POWER SYSTEM

### Designed and Manufactured by, MARTIN MACHINERY

**For Emergency or Prime Power 1 to 1000 KW**  
**BALANCED DESIGN to Give You Peak Performance**  
**for Your Application:**

• FARM • INDUSTRIAL • COMMERCIAL • RESIDENTIAL



• Choice of the Following:

- \* **Governors:** Mechanical, hydraulic, or electronic to 3/4% regulation
- \* **Windings:** Single phase only or combination multiphase windings
- \* **Voltage Regulators:** Transformer or Solid State regulation to 2%
- \* **Engines:** New or Rebuilt
- \* **Engine Brand:** White, Detroit, Cummins, Ford, Chrysler, Cat, Perkins, Allis Chalmers, John Deere, & others.
- \* **Fuel:** L.P. Gas, gasoline, or diesel
- \* **Starting:** Automatic or "Turn the Key"

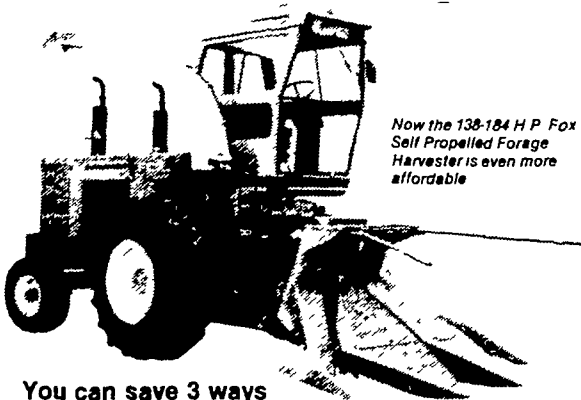
**We Also Have Special Designed Switch Gears**  
Manufactured by Westinghouse to Our Specifications

**MARTIN MACHINERY**

P.O. BOX 306, MARTINDALE, PA 17546  
Bus. Ph: 215-445-4801      Res. Ph: 215-267-7121

# SAVE UP TO \$5,500

on a brand-new Fox SPF



*Now the 138-184 H.P. Fox Self-Propelled Forage Harvester is even more affordable.*

**You can save 3 ways**

Save cash Or save interest And save the time and expense of fixing up your old chopper

**Get up to a \$3,000 rebate**

We'll give you up to a \$3,000 refund on the cash purchase of a Fox SPF. Just like that! No ifs or buts.

**Or pay no interest until April 1, 1981.**

Get into a Fox SPF this harvest and enjoy the savings later. Zero interest cost until April 1, 1981 — plus the investment credit you can claim this year.

**Plus, a \$2,500 cash retail incentive**

We'll give you a special \$2,500 cash retail incentive for purchasing a Fox 6200, 6244, 6250, 6254, 6350 or 6354 Fox SPF (Offer good through December 31, 1980). That can cut your cost by as much as \$5,500. Now, that's smart chopping!

We reserve the right to cancel this program without notice.

**FOX** strong on performance

1000 22nd St  
Lancaster, PA 17602  
Tel: 717-393-2407