

## N.Y. dairy, beef cattle said tuberculosis free

SYRACUSE, N.Y. — Secretary of Agriculture Bob Bergland presented a certificate officially designating New York as "Accredited free of Tuberculosis in Cattle" in special ceremonies in Syracuse last Wednesday.

The certificate honoring New York dairy and beef cattle producers for this achievement was presented to J. Roger Barber, Commissioner of the N.Y. Department of Agriculture and Markets, following a dinner sponsored by the Syracuse Chamber of Commerce at the Hotel Syracuse.

"The eradication of tuberculosis in cattle has been a cooperative effort of state and federal animal health officials — made possible through the dedicated work of the dairy and beef producers of New York," Bergland reports.

According to Dr. Harold E. Nadler, Director of the Division of Animal Industry in New York, over 17 million cattle have been tuberculin

tested in the state since 1919. This testing disclosed over 900,000 reactor animals. No infected animals have been found in New York herds since 1971, however.

To be accredited free of bovine tuberculosis a state must fulfill standards of the cooperative state-federal eradication program including:

No infected cattle found in the state for at least five years;

State enforced laws and regulations governing livestock dealers;

Continued surveillance of all cattle in market channels by animal health officials; and

Record keeping that enables state officials to trace infected animals found in market channels back to their herd of origin.

Other states designated by USDA as accredited free of bovine tuberculosis are Colorado, Connecticut, Maine, Maryland, Michigan, Minnesota, Montana, New Hampshire, New Jersey, New Mexico, North Carolina, North Dakota,

Rhode Island, Utah, Vermont and Wyoming.

Four herds in the continental United States have been found infected with

bovine tuberculosis during this fiscal year — compared with 17 herds in fiscal 1979. Veterinary officials with USDA's Animal and Plant

Health Inspection Service urge dairy and beef cattle producers to buy replacement cattle from herds free of the disease.

## Identifying diseases

(Continued from Page D5)

that permits us to monitor seed quality much more accurately than present methods do," explains the plant pathologist.

"There are easily 70,000 seeds in a pound. Right now one contaminated seed in 10,000 is the maximum allowable rate if a grower or seed company sends seeds to Georgia to start transplants for peppers to be grown in Delaware. But the current assay procedure is so inefficient it could be missing 98 percent of the bacteria present in a seed lot. By contrast, the selective media we've developed for a screening bacterial disease should be totally effective."

So far the research team has developed selective media which identify bacterial diseases in cucumbers and melons; cabbage, radishes, broccoli and other

crucifers; tomatoes and peppers; snap beans, soybeans, corn, wheat, peaches and citrus crops, as well as some ornamentals.

Delaware is the only research station in the U.S. doing such comprehensive work with selective media for the screening of bacterial disease. The work is being funded by a grant from the U.S. Department of Agriculture and is part of a cooperative regional project on the "Detection and Elimination of Bacterial Contaminants of Seeds and Plant Parts" which involves almost every major plant pathologist in the U.S.

"This kind of research costs a lot of money," says Sasser. "It will take at least three years to produce conclusive results. Though not splashy, these will have a tremendous impact on agricultural production."



## Pole Shed & Barn Material Center

### PRESSURE TREATED LUMBER

- |        |        |           |   |
|--------|--------|-----------|---|
| SIZES: | • 2x4  | • 4x4     | Excellent For:<br>★ FARM BUILDING ★ PATIO<br>★ FENCE ★ POLE SHEDS<br>★ SUNDECK ★ OTHERS |
|        | • 2x6  | • 4x6     |   |
|        | • 2x8  | • 6x6     |   |
|        | • 2x10 | • 2x6 T&G |   |
|        |        |           |   |

### Treated Landscape Timbers

3 1/2" x 5" x 8" **\$3.99**

■ 1x8 Barn Siding 6' to 16'

■ 2x8 T&G Yellow Pine Barn Flooring



For Low Prices on Roof Trusses  
Check with Musselman

### Large Selection of LAWRENCE HARDWARE

- Door Hangers
- Bumpers
- Brackets
- Stay Rollers
- Track
- Latches

1 x 6 Rough Cypress Boards  
for Fence & Gates



Put a roof over your roof.

Cover your old shingled or built up roof with

### Onduline

Corrugated asphalt panels warranted 25 years against leaks.

- USE THE ASPHALT ROOFING SIDING THAT
- insulates like cork
  - offers a choice of built in colors
  - installs easily on foot centers
  - requires no special tools
  - will not rust
  - is lightweight and flexible
  - will not corrode from fertilizers or chemicals

Stocking Dealer  
Silver, Red, Green & Brown

**FREE DELIVERY**

## MUSSELMAN LUMBER INC.

200 BRIMMER AVENUE, NEW HOLLAND, PA

Phone 717-354-4321



Hours: Daily 7 AM to 5 PM, Saturday 7 AM to 12 PM

## FRYS' RENDERING WORKS INC.

Dealers In:

- Hides • Bones • Tallow
- Restaurant Grease

For Further Information Call  
**717-464-2631**

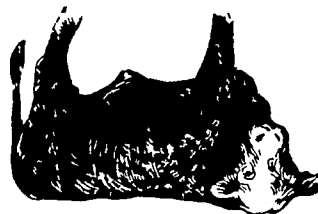
or Write:

2114 Hollinger Rd., Lancaster, PA 17602

Dead Animals Removed  
Promptly

No charge within a 15 mile  
radius of Lancaster

717-464-2631



**GOOD NEWS!**  
**SAVE ON ALL**  
**MORTON BUILDINGS**  
**WATCH THIS SPACE FOR**  
**THE NEXT FEW WEEKS FOR**  
**EXAMPLES OF THE HUGE**  
**SAVINGS:**

## 27' x 36' Livestock Shelter

5 ROWS OF PENTA TREATED BOARD, 2" x 6" BUMPER BOARD, RUB IRONS ON EXPOSED POST. OPEN ON 36' SIDE

**\$3840.**

NO TAX  
NEED BE  
ADDED

To take advantage of this offer, we ask the following: Provide a level building site; furnish unloading help; participate in our 3 payment plan; accept delivery and erection at Morton Buildings' convenience. Note: travel expenses will be added if your building site is more than 40 miles from the sales office. Offer subject to change without notice.

**FREE WEATHER VANE WITH EACH BUILDING PURCHASED**

CALL COLLECT  
OR WRITE  
TODAY

Serving Central PA  
and Maryland  
RD 4, Box 34A  
Gettysburg, PA 17325  
Ph 717-334-2168

Serving North  
Central PA Area  
P O Box 937  
State College, PA 16801  
Ph 814-383-4355

Serving Eastern PA  
and New Jersey  
Box 126  
Phillipsburg, NJ 08865  
PH 201-454-7900

Serving Virginia  
P O Box 529, 133 W Davis St  
Culpepper, VA 22701  
Ph 703-825-3633

