



## The Milk Check

**TOM JURCHAK**  
County Agent

### Lookin' Good

A 56 cent jump in the uniform price to producers for July milk shipped to Order 2 handlers will be looking good on your milk check. But don't jump to the conclusion that you're out of the (marketing) woods already.

First of all, look where the 56 cents came from last month. The biggest part was the 40 cent Louisville Plan payment you made in June but not in July. Your Class II price jumped 19 cents over last month, but 14 cents of that was the season adjustment going from minus three cents in June to plus 11 cents in July.

So, between the Louisville Plan payment and the seasonable adjustment you got 54 cents out of the 56 cent

increase and all you can take credit for is two cents. You got that mostly from a 4.8 percent drop in production and a 1.7 percent increase in Class I sales over last month. This raised your utilization to 40.4 percent compared to last month's very low 37.7 percent.

Then there was a 2 cent increase in your Class I price and 5 cents on Class II (without the seasonal differential) which also helped a little.

I think it's important for you to know what is the "real" milk price when the announced price is stripped of all the "extras." This way you can more accurately evaluate changes in the marketing situation and not be misled by taking the figures at face value and

### Washed lamb competition

**TIMONIUM** — After a one-year break, the 4-H and FFA lamb fitting and showing contest returned to the Maryland State Fair last week with a new set of rules. It is now a washed lamb event, instead of the unwashed lamb competition of earlier years.

Jeffrey Hagerty, 13, of Clarksburg, was the junior champion in this year's contest, and Hughy F. Salfner, Jr., 17, of Rossville was the senior champion.

Hughy's sister, Patricia Salfner, won the same honor in 1978. Hughy belongs to the Sparks 4-H club, and was

showing his Montadale ewe.

Other contestants in the senior contest were Stuart Hoover, 15, of Mount Airy, placing second, and Joe Hagerty, 17, of Clarksburg third. Joe is a brother of the junior winner.

The washed lamb fitting and showing competition consists of two parts. Contestants must supply their own lambs which have been washed, dried and in full fleece prior to entering the show ring. The contestants are given one hour to fit their sheep. They then show the sheep before a panel of three judges.

making the wrong conclusions.

Oh yes, I forgot to tell you that the uniform price for July was \$12.48 for 3.5 milk at the 201-210 mile zone and that was 88 cents more than last year.

### Compared to What

That 4.8 percent drop in milk production for Order 2 from June to July was a pretty hefty cut, but compared to what?

June's production was the highest for that month in Order 2 since 1971. But July — even with a 4.8 percent drop — was the highest since 1966.

Even the 1.7 percent increase in Class I sales was no big deal since it was still the third lowest for the month in the last 13 years.

The Order 2 production for July, as well as the first seven months of this year, is running more than four percent over last year in spite of the mid-summer seasonal declines usually expected.

Next month you'll be getting your first 25 percent pay back under the Louisville Plan that will add 35 to 40 cents a hundred to your milk check.

Again, don't confuse this increase with changes in the marketing picture. It's only your share of what you contributed to the Plan from March to June.

So, remember, figures don't lie but they can be misleading to the unformed and I certainly hope you aren't one of them.

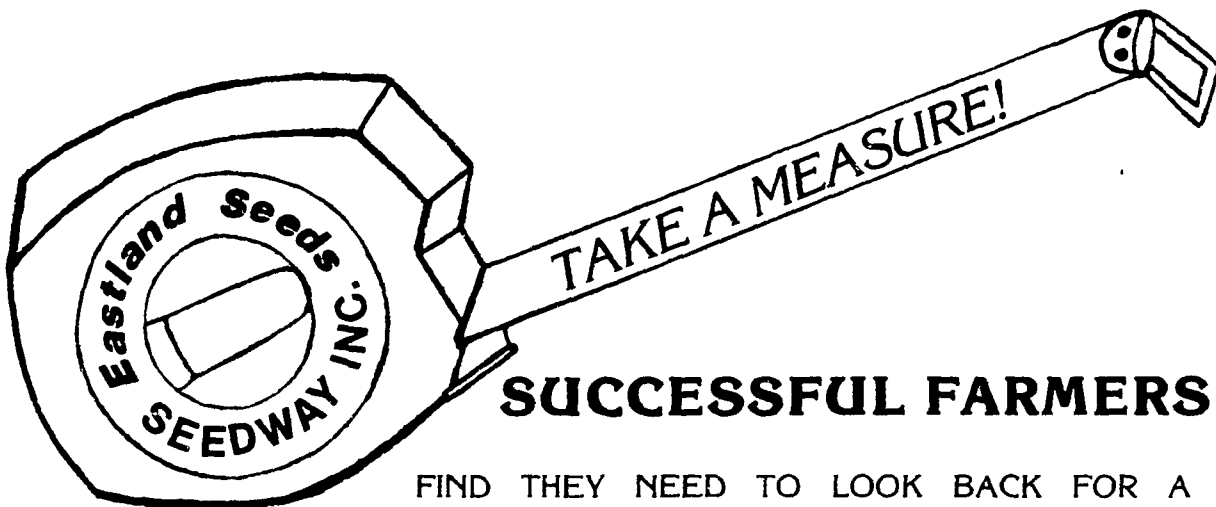
# DEAD STOCK REMOVED PROMPTLY

ANYTIME — ANYWHERE

We Charge For distant Pickups.

**A. F. BRANDT'S SONS**  
RENDERERS

**ELIZABETHTOWN, PA**  
**(717) 367-6026**



## SUCCESSFUL FARMERS

FIND THEY NEED TO LOOK BACK FOR A MOMENT ON THE PROGRESS THEY'VE MADE. IT'S AN IMPORTANT PART OF THEIR SUCCESS. WE HOPE YOU WILL MEASURE YOUR CROP PROGRAMS CLOSELY THIS FALL TO INSURE A BUMPER HARVEST FOR NEXT SEASON. IN FACT, WE'RE SO SURE YOU WILL BE AHEAD IN THE END, THAT WE'LL HELP YOU MAKE THOSE MEASUREMENTS.



**ORDER FIVE OR MORE UNITS OF EASTLAND SEED CORN THAN YOU HAD LAST YEAR AND GET A BUMPER CROP FROM YOUR INVESTMENT!**

### YOU GET:

- 1) A FREE 50' TAPE MEASURE WITH WHICH TO MAKE THOSE MEASUREMENTS
- 2) ONE FREE UNIT FOR EACH TEN PURCHASED
- 3) AN OPTION TO SAVE AN ADDITIONAL 5% ON SEED PAID FOR BY JAN. 15, 1981
- 4) THE FIRST CHANCE AT VARIETIES AND GRADE SIZES
- 5) PROVEN EASTLAND VARIETIES DEVELOPED RIGHT HERE IN OUR NORTHEASTERN ENVIRONMENT
- 6) SEED CORN AT REALISTIC PRICES IN TODAY'S FARM ECONOMY

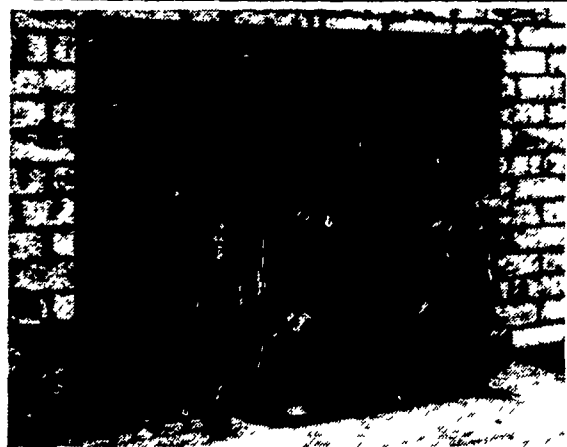


**AT EASTLAND SEEDS WE MEAN BUSINESS—  
HYBRID CORN BUSINESS—LET OUR NEW  
GENERATION HYBRIDS SHOW YOU.**

Distributed By:

**Eastland**™ **SEEDWAY, INC.**  
Seeds  
Emmaus, Pa.  
215-965-5072

## ALASKA KODIAK WOODBURNERS



### FIREPLACE INSERT

- Fits into your existing fireplace complete with all parts, including blower and instructions for easy installation
- Specifications (Large)  
Burning time 10 to 12 hours Heating capacity with blower, 2,500 Sq. ft., without blower 2,000 Sq. ft.  
Fireplace minimum opening 23½" high x 32¼" wide x 15¼" deep

Effective Now Factory Authorized  
Super Sale of 1980

MANY OTHER MODELS AVAILABLE



**CHESTER B. NOLT**  
30 S. Hershey Ave., Bareville  
Leola, Pa. 17540  
717-656-6898

### STORE HOURS:

Closed Mon & Tues., Open Wed, Thurs, Fri 10 to 8,  
Sat 10 to 4 Other hours by appointment