

HOG PRODUCERS!

Get Top Price for
Your Hogs at
New Holland



Sold in sorted lots the auction way. See them weighed and sold and pick up your check.

SALE EVERY MONDAY - 8:00 A.M.

NEW HOLLAND SALES STABLES, INC.

Phone 717-354-4341
Daily market Report - Phone 717-354-7288
Abe Diffenbach, Manager

Dairy official sees moderate price rise

ALLENTOWN — Dairy farmers can expect farm milk prices to rise moderately for the next 12 months. The increase is likely to be much less than occurred during the same period a year ago.

Meanwhile, farm costs will follow the general trend of inflation. Consequently, farm milk prices in the Northeast are likely to fall short of rising costs. The basic reason is because the formula for establishing farm milk prices has not shown much increase, says Lehigh Valley Farmers Vice President, John C. York.

The basic formula (Minnesota/Wisconsin price) for the past four months, April through July, has risen by five cents per hundredweight, while in 1979, for the same period, the M/W price increased by 24 cents per hundredweight.

Moreover, the M/W price has not kept pace with the level of support prices, York says.

For example, in April, the M/W price was 39 cents below support prices; May 41 cents below; June, 35 cents below; and July 34 cents below. It is the first time in the past 27 months or a period of about two and a half years that the M/W price has been below the level of support prices.

This situation is likely to continue into the future for another year, he says.

Support prices can be expected to go up about 70 cents to about \$12.75 per hundredweight on October 1. The possibility of the M/W price increasing to equal the level of the support price is not foreseen.

In an effort to give dairymen some price guidelines through June 1981, estimates have been computed for the following markets. The estimates are based upon a support price increase in October of this year and no change in support prices on April 1, 1981.

Order 4

Estimated Prices F.O.B. Mkt., 3.5% Fat

Month	Base	Excess	Blend	Last Year Act. Blend
1980				
July	13.14	11.66	13.12	12.10
Aug.	13.21	11.95	13.18	12.38
Sept.	13.33	12.06	13.26	12.55
Oct.	13.57	12.16	13.44	12.75
Nov.	13.72	12.26	13.59	12.91
Dec.	13.69	12.31	13.56	12.76
AVG.	13.44	12.07	13.36	12.58
1981				
Jan.	13.81	12.31	13.64	12.84
Feb.	13.89	12.37	13.67	12.83
March	13.72	12.31	13.57	12.85
April	13.71	12.31	13.54	12.82
May	13.70	12.18	13.48	12.87

June	13.69	12.29	13.51	12.90
AVG.	13.75	12.30	13.57	12.85

Order 2

Estimated Prices - 201-210 Zone (3.5% Fat)

Month	Blend	(Last Year) Actual Blend
1980		
July	12.48	11.60
August	13.00	12.23
September	13.19	12.51
October	13.36	12.64
November	13.37	12.62
December	13.09	12.25

AVG.	13.08	12.31
------	-------	-------

	1981	
--	------	--

January	13.12	12.25
February	13.15	12.24
March	12.88	12.06
April	12.67	11.96
May	12.54	11.90
June	12.58	11.92

AVG.	12.82	12.06
------	-------	-------

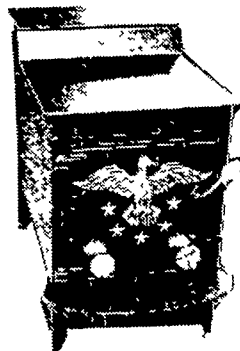
The Order 4 blend does not reflect hauling costs from farm to market which ranges between 35 cents and 75 cents.

The Order 2 blend does not reflect 15 cents permissible hauling deductions by proprietary handlers not hauling and stop charges deducted by cooperatives, nor an increase in hauling or pool credit deductions likely to occur in the near future occasioned by the June, 1980 hearing.



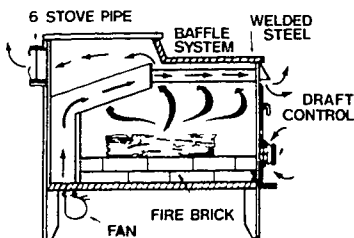
SILVER EAGLE

Gives You More Heat
With Less Wood



Patent Pending

The Baker "Silver Eagle" is engineered for peak efficiency. Not only do you have the fastest cold to hot time, but also the longest burning. Constructed from heavy-welded steel plates, cast iron door and hinges, and fire brick lining. Tastefully finished in early American tradition, the Baker "Silver Eagle" will add warmth, beauty and charm to your home, shop and place of business. We re-invented the wood burning stove, circulatory and radiant heat.



J & A STOVES

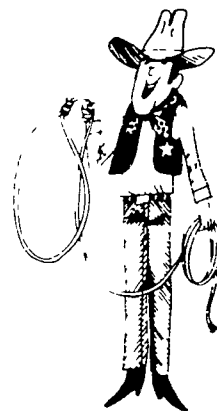
3752 East Newport Rd
Gordonville, PA 17529
Along 772 1/2 Mile East
of Intercourse
PH 717-768-8913

Baker Wood Burning Stoves the patented system for warmer living

ROPE IN SOME EXTRA CASH!

Advertise With A
Lancaster Farming
CLASSIFIED AD...

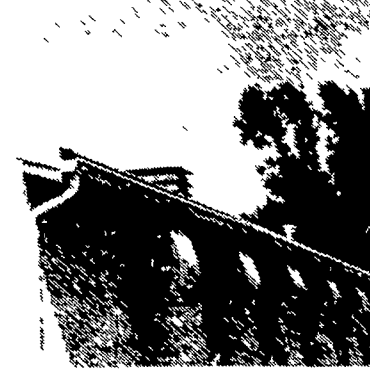
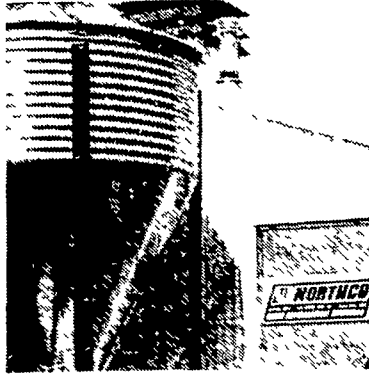
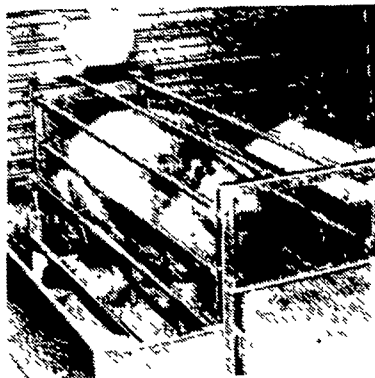
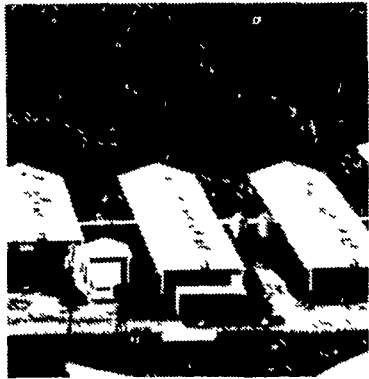
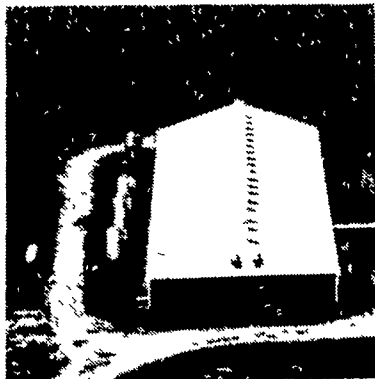
Phone: 717-394-3047
or 717-626-1164



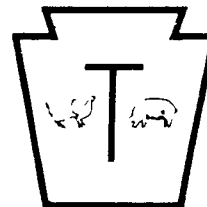
NORTHCO SYSTEMS

Controlled Systems

EXPERIENCE YOU CAN TRUST



- FARROWING CRATE
- STAINLESS STEEL FENCING
- FEED CONVEYING
- CONTROLLED FLOOR FEEDING
- VENTILATION
- ZONE HEATING



THOMAS FARM SYSTEMS, INC.

Phone (717) 299-1706

For more information, complete this coupon & return to
THOMAS FARM SYSTEMS, INC.
2025 Horseshoe Road, Lancaster, PA 17601

NAME _____
ADDRESS _____
CITY _____
STATE _____ ZIP _____
PHONE _____