

Lancaster 4-H pigs

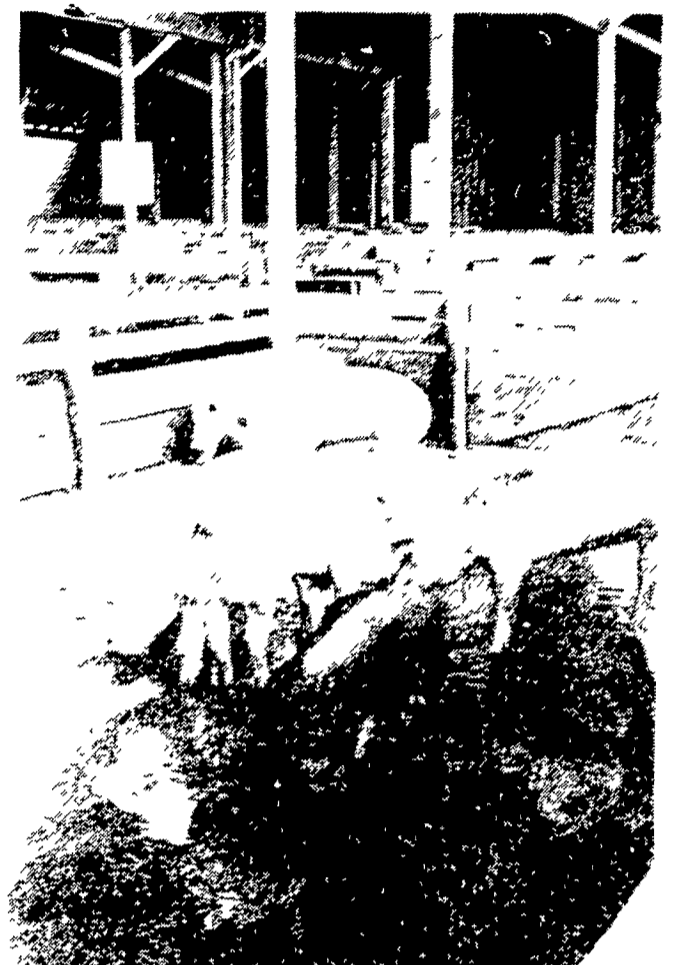
(Continued from Page A1)

Class II, 185 pounds, Darwin Myer, 52 cents.
 Class III, 190 pounds, Tiffany Rohrer, 50 cents.
 Class VI, 205 pounds, Janet Wagner, 67 cents.
 Class XII, 245 pounds, Sarah Brubaker, 70 cents.

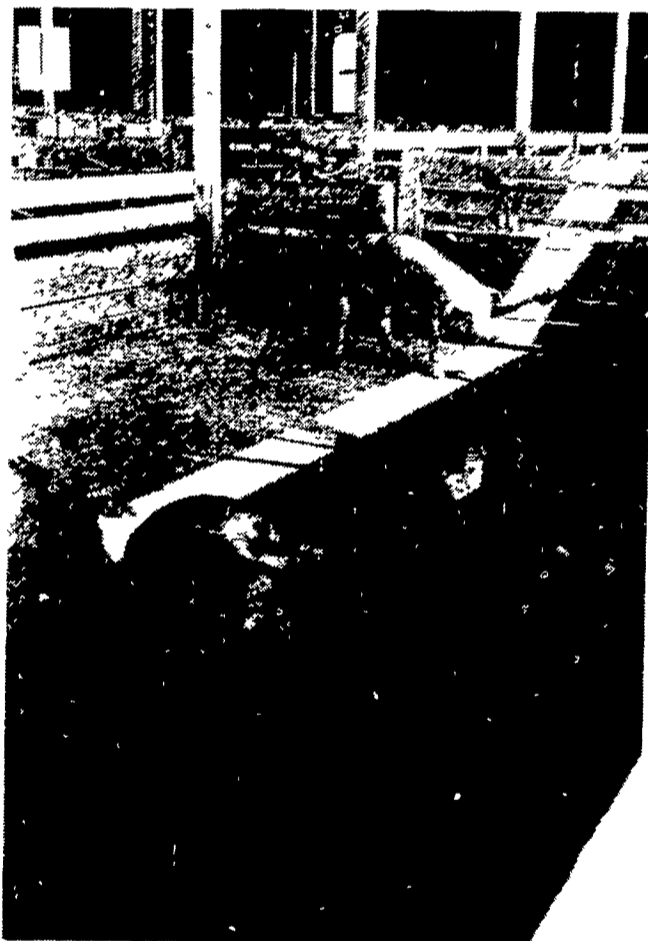
Is this any way for a champ to act?



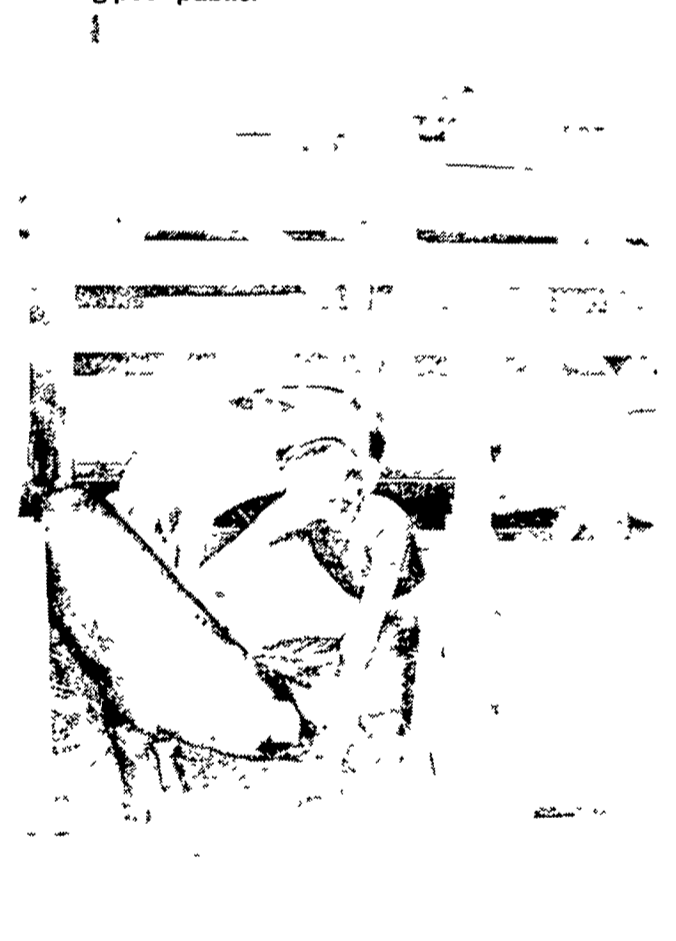
First, all alone at the top of the heap rooting for a snack.



Then, flopping down to cool off amidst an admiring peer public.



Finally, just sacking out completely after a tough day of grooming and in the ring.



While, the owner, Judy Zimmerman, continues to groom other entries.

Wednesday is deadline for All-American

HARRISBURG — Pennsylvania's Agriculture Secretary Penrose Hallowell Friday reminded dairy farmers that September 3 is the last day to enter the 17th Pennsylvania All-American Dairy Show to be held September 22 to 26 at the Farm Show Complex in Harrisburg.

Hallowell challenged dairymen in the commonwealth to bring their best cattle to the All-American and "compete with the best in the East. Competition is one of the greatest incentives for the improvement and advancement of a farmer's herd."

This year's show will feature six "All-American" breed shows, two breed sales, the Pennsylvania Dairy Princess Coronation, the Dairy Shrine Annual Meeting and Honors Banquet, and many commercial exhibits.

The six dairy breeds — Ayrshire, Brown Swiss, Holstein, Milking Shorthorn, Guernsey and Jersey — will be competing for more than \$66,000 in premiums.

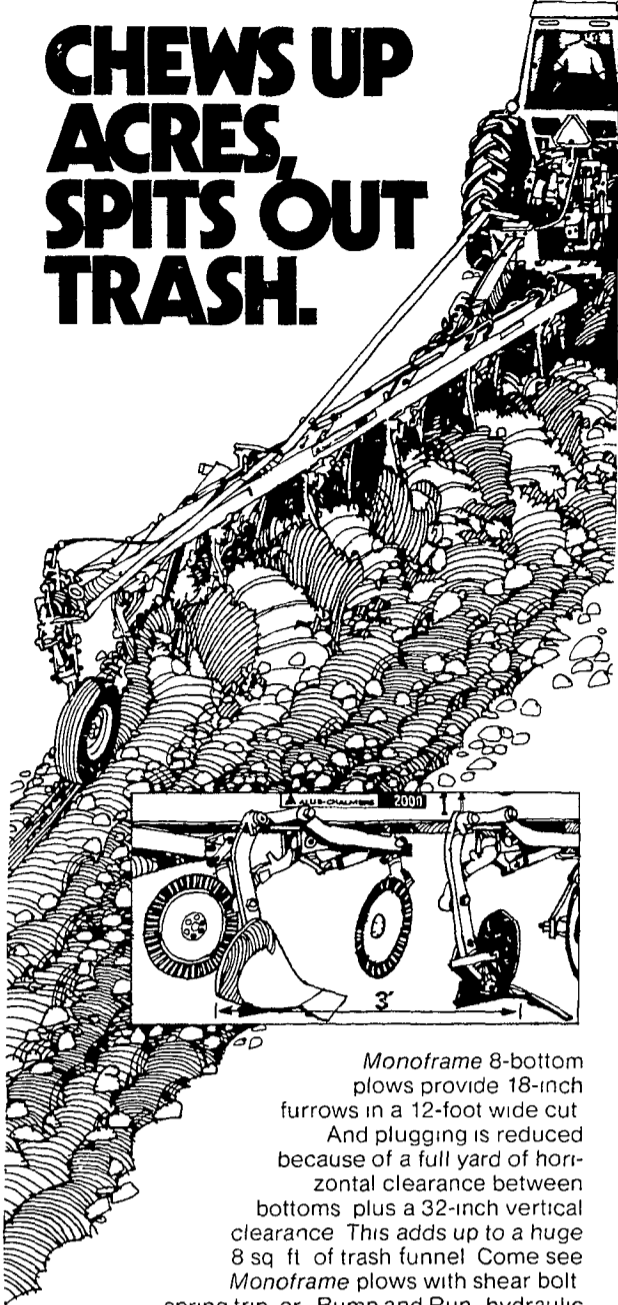
The two breed sales will feature Brown Swiss and Holstein.

The Pennsylvania All-American Dairy Show is sponsored by the Pennsylvania Dairy and Allied

Industries Association in cooperation with the Pennsylvania Farm Show Commission and the Pennsylvania Department of Agriculture

For additional information contact the Pennsylvania All-American Dairy Show, Farm Show Complex, Box 3362, Harrisburg, PA 17105, or call 717/787-2905.

CHEWS UP ACRES, SPITS OUT TRASH.



Monoframe 8-bottom plows provide 18-inch furrows in a 12-foot wide cut. And plugging is reduced because of a full yard of horizontal clearance between bottoms plus a 32-inch vertical clearance. This adds up to a huge 8 sq ft of trash funnel. Come see Monoframe plows with shear bolt spring trip or Bump and Run hydraulic reset bottoms which lift over buried objects and reset automatically. Plow more acres per day in less time with plows that eat acres and pass trash.

Monoframe is a registered Allis Chalmers trademark.

The
in Farming
ALLIS-CHALMERS

ROY H. BUCH, INC.
Ephrata, RD 2, PA
717-859-2441

WERTZ GARAGE
Lineboro, MD
301-374-2672

BEN H. WALTER
R D 1, Beavertown, PA
717-658-7024

AGRONOMICS INC.
Box 64, R D 2
Factoryville, PA
717-945-3933

**PAUL DOTTERER
FARM EQUIPMENT**
R D 2, Mill Hall, PA
717-726-3471

NICHOLS FARM EQUIPMENT
R D 1, Bloomsburg, PA
717-784-7731

MARSHALL MACHINERY
R D 4, Honesdale, PA
717-729-7117

L. H. BRUBAKER, INC.
Lancaster, PA
717-397-5179

**PETERMAN FARM
EQUIPMENT, INC.**
225 York Road
Carlisle, PA
717-249-5338

**SHARTLESVILLE
FARM SERVICE**
Shartlesville, PA
215-488-1025
H. Daniel Wenger, Prop

**MECKLEY'S LIMESTONE
PRODUCTS INC.**
R D 1, Herndon, PA
717-758-3915

C. J. WONSIDLER BROS.
Rt 309 & 100
R2 New Tripoli, PA
215-767-7611

B. EQUIP., INC.
8422 Wayne Hwy
Waynesboro, PA
717-762-3193

GRUMELLI FARM SERVICE
Quarryville, PA
717-786-7318

**BHM FARM
EQUIPMENT, INC.**
Annville, RD1, PA
717-867-2211

C. J. WONSIDLER BROS.
RD 1, Quakertown, PA
215-536-1935
215-536-7523

AG. - INDUSTRIAL EQUIPMENT
R2, Rising Sun, MD
301-658-5568

AIRVILLE FARM SERVICE
Hwy 74, Airville, PA
717-862-3358

A. J. NOSS & SON, INC.
RD2, Oley, PA
215-987-6257

CANYON IMPLEMENTS, INC.
RD1, Mansfield, PA
717-724-2731



**GIGANTIC
SELECTION
IN
Lancaster
Farming's
CLASSIFIEDS**