

## Central dairy show

(Continued from Page A1)

1979 Lebanon County Dairy Princess from R1 Jonestown.

Maulfair's intermediate calf entry was tagged the Reserve Junior Champion, adding still another win to her record.

The Reserve Grand Champion Ayrshire trophy will also be travelling to Lebanon County. Ann L. Weaver, R1 Fredericksburg, exhibited her 3-year-old

Sycamore Meade Brave's Alert to the second place slot overall and followed the Maulfair entry as the Reserve Senior Champion.

The Junior Champion was nine-year-old Sherry Keefer's junior yearling "Bobbi". This heifer was the grand champion at the Dauphin County Roundup held two weeks earlier at the Farm Show Complex.

Once again David Feidt of Dauphin County stood at the

halter of the Grand Champion Brown Swiss. The Millersburg youth's aged cow, "Rainy", was tagged Senior Champion by Judge Seidel. She was the grand champion at the County Roundup this year.

Lebanon County's Patti Heilinger showed her two-year-old, Marty L. Princess, to the Reserve Grand Champion honors after taking the Reserve Senior Champion trophy.

Lancaster County's Lucinda C. Trimble exhibited her senior calf, Arnola Lois Amanda, and



The Grand Champion Holstein at this year's Southcentral District 4-H Dairy Show was exhibited by Tammy Yost, R1 Hershey. "Etta" was the 1979 State champ.



Diane Maulfair, from Jonestown, Lebanon County, and her two-year-old Ayrshire "Milkdud" once again captured a purple ribbon and the Grand Champion's trophy.

captured the Junior Champion title. She stood over a senior yearling owned and shown by David Krone, York County. Krone's entry was tagged Reserve Junior Champion.

Another Lancaster County youth and his senior yearling Jersey brought home a Grand Championship trophy.

Matthew Arrowsmith, Peach Bottom, exhibited Pine Mountain Fashionable Anita to Senior Champion and then on to the top.

Next in line was Karen Hobaugh's junior yearling

which captured the Junior Champion title before taking the Reserve Grand Champion honor. Hobaugh hails from R3 Hanover, Adams County.

The Reserve Junior Champion of the Jersey show was exhibited by Garry Martin, Shippensburg, Franklin County.

One of the stablemates in the well-known Rutter Brothers barns in York County was named Grand Champion Guernsey

Exhibited by Tina Rutter, the aged cow, Rutter Bros. Pals Faith, was also the

Senior Champion.

Another Rutter recruit captured the Junior Champion slot. This was Tina's senior yearling, Rutter Bros. Pals Wendy.

The reserve champion honors in the Guernsey show went to two Lancaster County 4-H'ers. Mary Ann Witmer, of Willow Street, Lancaster, exhibited her four-year-old to the Reserve Senior Champion title before being tagged Reserve Grand Champion of the show.

The Reserve Junior Champion went to Mike (Turn to Page A21)

Dau  
the Gr

(Cont  
Rohrer  
Road,  
interme  
Alto  
from  
Cumbe  
Frankl  
York  
before  
year's  
4-H Dau  
Type  
shure a  
was Wil  
Spring,  
Raymor  
judged  
and Bro

## Butler Formated Buildings

## BUTLER'S FIGHTING REDUCED PRICES

LESS THAN **\$4200\***

**30'x50'x11'**  
with 16'x10' D/S Door

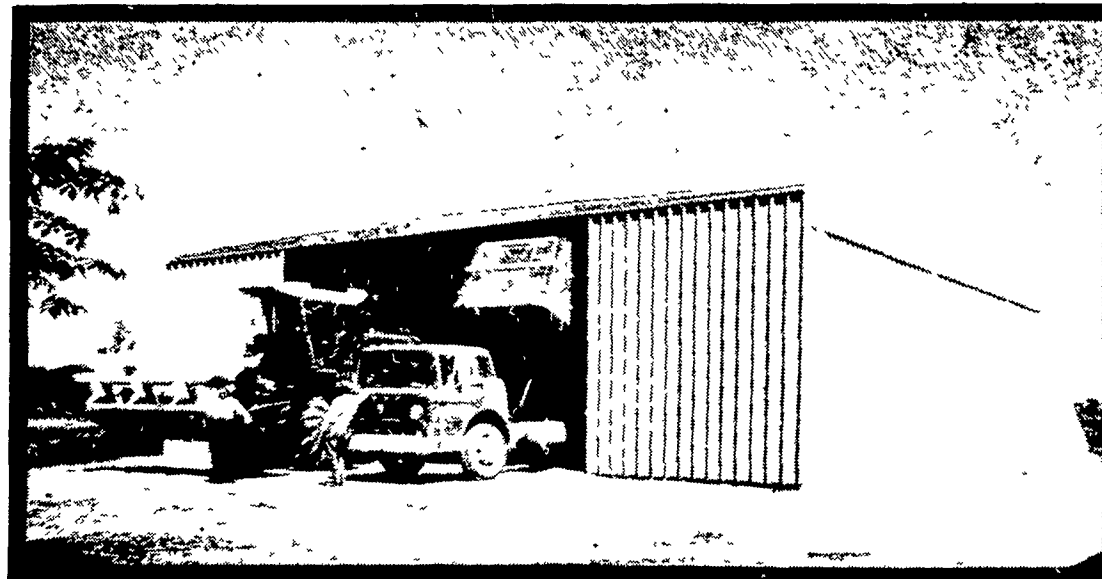
**FARMSTED I**  
Galvanized Walls and Galvanized Roof

LESS THAN **\$5300\***

**40'x50'x14'**  
with 20'x13' D/S Door

**FARMSTED I**  
Galvanized Walls and Galvanized Roof

Those Buildings Engineered for Self-Erection  
(Butler will furnish Erection and Foundation Drawings)



FARMSTED® I



IDEAL  
FOR  
GRAIN  
OR  
MACHINERY  
STORAGE

LESS THAN **\$7**

**50'x50'**  
with 24'x15'7"

**FARMS I**  
Galvanized Walls and G

LESS THAN **\$8**

**60'x50'**  
with 30'x15'3"

**FARMS I**  
Galvanized Walls and Ga

\* All Building F O B Annville Pa  
\* (Buildings not equipped as shown)  
\* Prices Based on Independent Survey of Agri-  
\* Prices Could Vary With Each Agri-Builder

P. E. HESS, BUTLER MFG. CO.  
Box 337, Oxford, PA 19363



Dealer Inquiries Available in Pennsylvania Counties Arm  
strong Beaver Butler Cameron Centre Clearfield  
Clinton Crawford Elk Erie Indiana Mercer McKean  
Warren Maryland Counties - Baltimore Harford New  
Jersey Counties Sussex Somerset Morris Passaic  
Atlantic Cape May No Dealer Fees

Name \_\_\_\_\_  
Address \_\_\_\_\_  
County \_\_\_\_\_ Zip \_\_\_\_\_  
City \_\_\_\_\_ State \_\_\_\_\_  
Phone \_\_\_\_\_  
(Include area code) LF

## ★ BUTLER AND AGRI-BUILDERS ARE FIGHTING

C & M SALES INC.  
R D #1  
Honesdale, Pa 18431  
PH 717-253-1612

KNOXVILLE  
CONSTRUCTION  
Knoxville, Pa. 16928  
PH 814-326-4188

B.T. CONTRACTOR  
P O Box 535  
Biglerville, Pa 17303  
PH 717-677-6121

LEROY E. MYERS, INC.  
Route #1, Box 163  
Clear Spring, Md 21722  
PH 301-582-1552

W. R. MOODY,  
CONTRACTOR  
113 Walnut Lane  
West Newton, Pa 15089  
PH 412-872-6804

A. E. ENGEL, INC.  
P O Box 216  
Marlton, N J 08053  
PH 609-983-4404

SUNNY MEAD SALES  
RD #3, Box 409  
Altoona, PA 16601  
PH. 814-944-6045

ORVILLE MACK  
P O. Box 47  
Nazareth, Pa. 18064  
PH. 215-759-1331

BRIDGEWATER  
BUILDING SYSTEMS INC.  
R D. #2  
Thompson, Pa. 18465  
PH 717-727-2868

D. E. SMITH, INC.  
Mifflintown, Pa. 17059  
PH. 717-436-2151

O. A. NEV  
& SON  
Bridgeville, Dela  
PH: 302-33