



Kurt Brown, Klingerstown, showed the Grand Champion 4-H Hog purchased by Hatfield Packing Company at \$5.05 per pound.

Record price set in Central District show

DANVILLE — Hatfield Packing Company sets record by purchasing the Grand Champion Central District 4-H Market hog shown by Kurt Brown, Klingerstown for \$5.05 per pound.

Kurt's Yorkshire weighed 265 pounds. It won the Junior division champion placing last Monday, at the Danville Cattle Company sales barn.

Mel Lehman and Richard Baumert of Danville Cattle Company purchased both the reserve Senior Champion of Brad Smith, Milton and the reserve Junior Champion of Elsie Hower, R1, Catawissa at \$1.25 and \$1.05 per pound respectively.

Shamokin Packing Company, Shamokin bid in the Senior Champion shown by Stephen Fetterman of R2, Catawissa at \$1.90 per pound.

County Agent Leonard G. Yearick of Northumberland County, said the average for the sale was \$1.04 per pound. The sale average without the champions was 73 cents which was about 20 cents above market.



Elsie Hower, Catawissa, showed the Reserve Junior Champion purchased by Danville Cattle Company. Richard Baumert buyer.

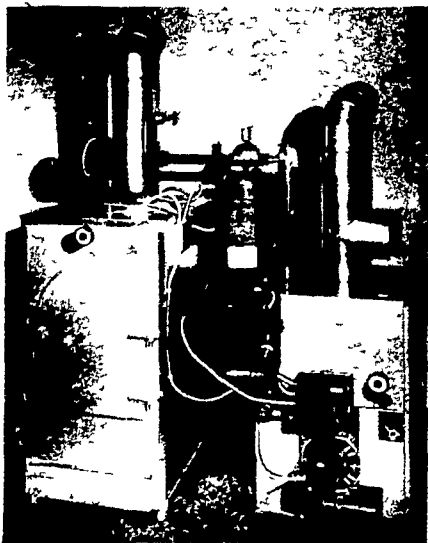
MEMCO® MW100 "THE TRUE DUAL SOLID FUEL BOILER"

First, Leading The Way

Patent #3,177,827 Tested & Approved. E T L M

- 1 50-gallon water volume for safety and efficiency
- 2 Large fill door "17x22"
- 3 DUAL SOLID FUEL SHAKER GRATE (control front burn separate from rear), two separate shaking actions give maximum efficiency for wood, coal, or wood-coal combination burning
- 4 Removable ash pan, entire length of MW100
- 5 Wet leg design, water surrounds combustion chamber plus wet flue baffle
- 6 6GPM domestic hot water coil optional

- May be used separately or manifold to existing boiler
- Combination systems available in Oil-Gas-Electric Boilers as back up for maximum safety and efficiency



MEMCO
MELVIN MCG CO. ®

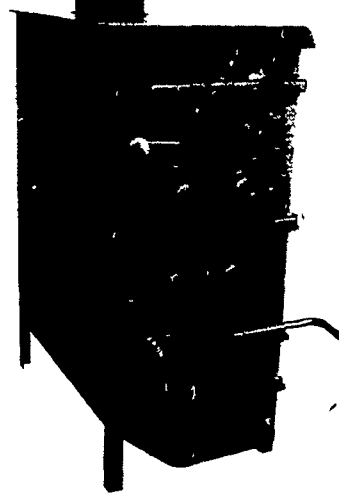
PENDEL HEARTH & HOME

123 Pennsylvania Avenue
Avondale, Pa. 19311
Telephone: 215-268-8222
Hours: Tuesday thru Friday 12 - 5 and 7 - 9
Saturday 10 - 5
Dealer Inquiries Invited

ALASKA KODIAK WOODSTOVES

Design inspired by America
and most unforgiving climates

INTRODUCING TWO NEW WOOD/COAL



FURNACE MODEL

- Heavy duty 5/16" & 1/4" steel plate
- Cast iron doors
- Cast iron shaker grate
- Steel plate baffle

COAL TYPE: Nut or Stove

BURNING TIME: Wood 14-16 hrs.
Coal 24+ hrs.

HEATING CAPACITY: 2500-3000 Sq. ft.

PARTIAL MODEL

- Heavy duty 5/16" & 1/4" steel plate
- Cast iron doors w/ tempered glass
- Cast iron shaker grate
- Steel plate baffle

COAL TYPE: Nut or Stove

BURNING TIME: Wood 14-16 hrs.
Coal 24+ hrs.

HEATING CAPACITY: 2500-3000 Sq. ft.

Convert Your Fireplace to Full Efficient Woodstove Heat!

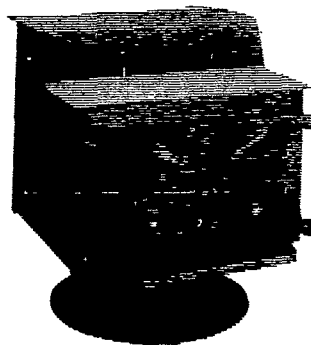
FIREPLACE INSERT

Designed to fit easily into your existing fireplace! The fireplace insert comes complete with blower for even greater efficiency. Available in two sizes; large size heats up to 2500 sq. ft. for *10-12 hours while the small size heats up to 2000 sq. ft. for *8-10 hours.

*Safety screen included

*Easy installation directions included

* Approximate average



PEDESTAL FIREPLACE

Distinctive in design, the Pedestal Fireplace will handle wood up to 20" long! Heavy-duty 1/4" - 5/16" steel construction and air tight cast iron door!

- Large size heats up to 2500 sq. ft. for up to *14 hours

- Small size heats up to 1800 sq. ft. for up to *10 hours

* Approximate average single load burn time

A rugged stove! The wood up to medium size size heats up medium size

Dual level cooling The Stove a partner helper!



ALASKA KODIAK WOODSTOVES

Woodstove Heat
By the people who know

Many Other Models Available

CHESTER B. NOLT

30 S. Hershey Ave., Bareville, PA 175

STORE HOURS — Mon. & Tues. by appointment, Open Wednesday 10 to 4. Other hours by appointment