

SILAGE AND FEED CARTS



34" Wide, 62" Long,
53" high, capacity (to feed
35 to 40 Cows)
16" Ball Bearing wheels
For very easy handling

28" wide, 60" long,
35" high, capacity 600 lbs
Choice of 10" pneumatic
or semi-pneumatic wheels

Many Other Sizes Available

We Also Manufacture Swivel Casters for
16", 12" and 10" wheels
MANUFACTURED AND DISTRIBUTED BY
SCENIC ROAD FARM SUPPLY
3539 Scenic Road
Gordonville, Pa 17529
2 1/2 Mi. Southwest of New Holland,
1 1/2 Mi. N. of Intercourse

— AUTHORIZED DEALERS —

AARON S. GROFF & SON IRVIN J. PEACHEY
RD #3, Ephrata, PA 17522 Star Route, Box 35
Belleville, Pa. 17004
Phone: (717) 354-4631 Phone: (717) 483-6714

ATLEE F. REBERT
RD 2 Littlestown, PA 17057
Phone: (717) 359-5863

LAPP SHARPENING SERVICE
Gibble Road,
Route 2, Box 276
Myerstown, Pa 17067

— DELIVERIES AVAILABLE —

Eastern National lists steer show prizes

TIMONIUM, Md. — Cash prizes totaling \$1800 and equipment valued at \$500 will be awarded in the Eastern National Production Tested Steer Show, a 10-month judging contest which begins November 8.

The contest, designed to measure feed efficiency and give livestock breeders an idea of which type steer puts on the most poundage at the least cost, is sponsored by the Eastern National Livestock Show.

The Eastern National conducts a number of educational programs in addition to its annual Fall Show to be held at the Maryland State Fairgrounds here September 26 - October 1.

Entry in the Production Tested Steer Show is open to steers of beef breeding, purebred, grade or crossbred, sired by a registered beef bull and born after January 1, 1980. Each

farm, firm or family may enter three steers. The entry fee is \$25 per animal.

The steers must be delivered on November 7 or 8 to the central test site in Maryland where they will begin the roughage test under the supervision of the Eastern National management. During the first week of April, the steers will be delivered to the Devereux Soleil Farm, Downingtown, Pa. where supervised feeding of the cattle on a computerized system that measures feed consumption will begin.

While on the test, each steer will be officially weighed a total of eight times before being slaughtered and the carcasses judged for cutability, yield and grade.

The exhibitor of the grand champion steer in the contest will receive the top prize of \$500 in cash and \$500 in equipment and supplies

donated by Harry Landis, of Cruetzburg, Inc., Paradise, Pa.

The exhibitor of the reserve champion will win \$250 and other cash prizes will be awarded.

For further information on the contest rules and regulations, and to obtain an entry form, contact the Eastern National Livestock Show, Maryland State Fair Grounds Timonium, Md.

Blair Co. DHIA

(Continued from Page D11)

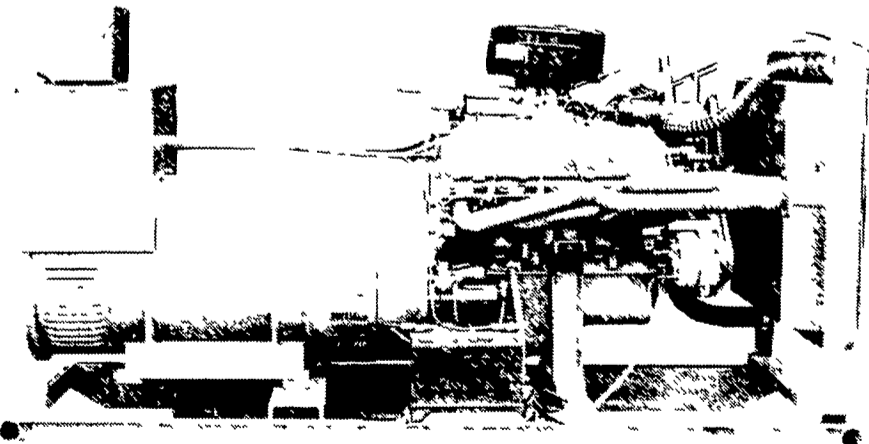
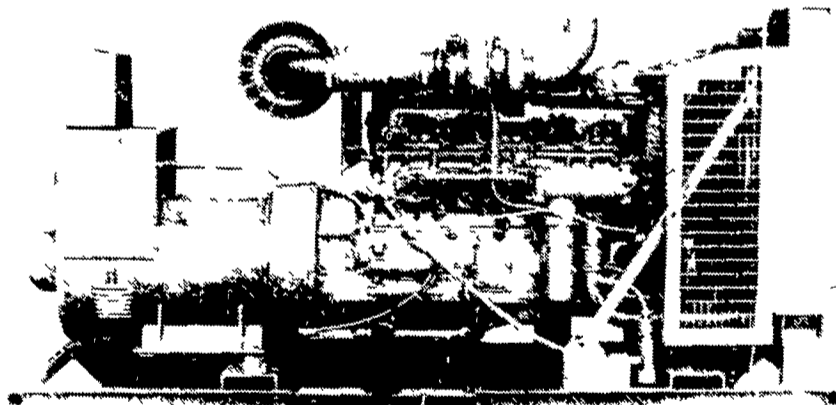
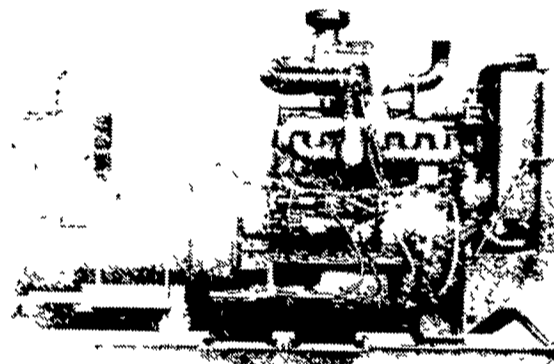
9121	GH	5-9	24,479	3 4	829
5929	RH	4-11	20,900	3 9	813
C Eugene Smith					
Grace 61	GH	5-5	17,064	4 4	752
W Dean Stern					
Y 67	GH	3-7	16,833	4 2	708
William R England					
59A	RH	6-1	17,514	4 0	708
55B	GH	3-10	19,701	3 6	704
Donald G Hoover					
Apple	RH	8-0	15,984	4 6	740
Ann	RH	3-3	16,369	4 3	702
George D Smith					
75	GH	4-1	20,073	3 9	788
Dawn Baker					
337	GH	2-6	19,945	3 7	736
Harry Brubaker					
Shelly	GH	4-7	16,380	4 4	723
Sue	GH	4-7	19,645	3 7	734
Rodney L Metzler					
86	GH	7-5	18,902	4 5	853
35	GH	4-7	20,081	4 6	915
176	GH	4-3	15,271	4 8	730
42	GH	6-0	16,827	4 8	806
Rodney Baby					
119	GH	7-6	21,374	3 9	838
Thomas W Kelly					
Jo	RH	6-3	18,667	3 8	702
Beautif	RH	6-11	19,351	3 9	747
Cora	RH	4-7	18,506	4 5	840
R Ernest Keninger					
2	GH	3-10	17,063	4 2	711
Noah S Zimmerman					
Comet	GH	4-1	19,833	3 7	729
Raymond Diebold					
Clover	RH	2-8	19,091	4 4	836
Cross County Farms					
100	RH	3-5	17,239	4 5	768
Mark Slagenweit, Jr					
Ann	RH	5-5	17,717	4 4	782
County Line Farm					
Honey	GH	6-0	21,811	3 6	794
Charles & Mike Hoover					
Joanne	RH	4-9	23,221	3 7	859
Sparkling Springs Farm					
177	GH	4-10	23,837	2 9	701
204	GH	4-10	19,518	3 8	739
Bradley Sollenberger					
Kathy H	GH	6-2	18,057	5 0	908

AUTOMATIC GENERATORS

— All Sizes and Shapes —

When the Electric
Goes Off . . .
And Things Get All
Mixed Up . . .

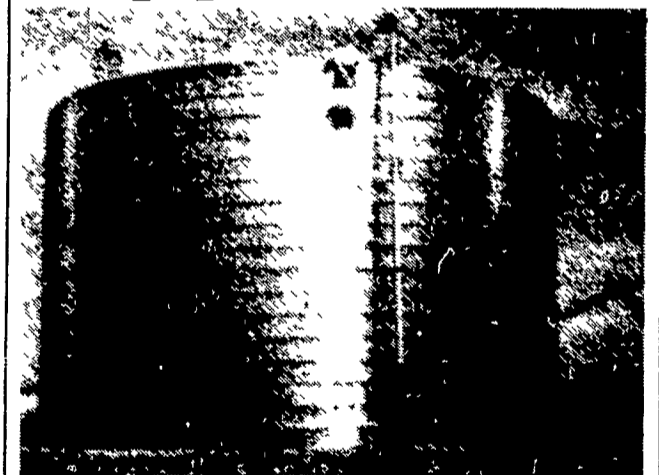
Call 717-274-1483
For A Generator
To Turn You On



— THE ORIGINATOR OF AGRICULTURE SWITCH GEAR —
MAXI-POWER GENERATORS
330 FONDERWHITE RD., LEBANON, PA 17042
LEONARD MARTIN CO 717-274-1483
★ RADIO DISPATCHED TRUCKS ★ 24 HOUR SERVICE



Lipp.



For Liquid Manure Storage.

Unique construction methods mean Lipp builds unique manure tanks—in fact, the strongest tank on the market today

We roll our tanks upward on location from coils of steel and seal the coil edges with a unique double fold lock seam. The result is a boltless, smooth inner wall tank in 12 to 90 foot diameters and up to 900,000 gallon capacities. Interiors can be epoxy or Black-Klad with aluminized or galvanized exteriors. And construction is quick.

We're Lipp. We're different and we're better. Storage is our specialty. Call or write today and get more details on the strongest manure tank available.

Lipp

CHESTER STOLTZFUS
Sales Representative
Route 2 Watsonstown, PA 17777
717-649-5321