

Livestock market and auction news

Pa. Auction Summary

Friday, August 29

Report supplied by PDA

CATTLE: 5812. Compared with 6475 head last week, and 6558 head a year ago. Compared with last weeks market: Slaughter steers grading choice through high Choice & Prime .50-1.00 higher, standard & good mostly 1.00 lower; SI. heifers steady to 1.00 higher; SI. cows .50-1.00 lower; SI. bullocks .50-2.00 higher; SI. bulls steady to weak. SI. steers: High Choice & Prime No. 3-4 73.00-78.10; Choice No. 2-4 70.00-76.25; Good 62.00-69.00; Standard 55.00-62.00; SI. heifers: Choice 63.00-68.75; Good 60.00-65.00; Standard 55.00-58.00. SI. cows Utility & Commercial 46.50-51.50, few 53.00. Cutters 44.00-49.00; Canner & L. Cutter 39.50-45.00; Shells down to 30. SI. bullocks: Choice 63.00-65.50; Good 58.00-62.50; Standard 54.00-58.00; SI. bulls Yield Grade No. 1, 1000-2300 lbs. 57.00-64.00, few 68; Yield Grade No. 2, 900-1700 lbs. 55.00-60.00.

FEEDER CATTLE: Steers, Medium Frame No. 1, 300-700 lbs. 66.00-83.00; Large Frame No. 2 600-900 lbs. 59.00-68.00. Heifers, Medium Frame No. 1 300-600 lbs. 51.00-66.00; Bull Medium & Large Frame No. 1 500-850 lbs. 55.00-66.00.

CALVES: 4207. Compared with 3902 head last week and 3962 head a year ago. Vealers steady to \$5 lower. Few Prime 112.00-117.00; Choice 90.00-108.00; Good 75.00-90.00; Standard & Good 90-120 lbs. 70.00-80.00; 65-90 lbs. 60.00-70.00; Utility 50-110 lbs. 40.00-60.00.

FARM CALVES: Hol. Bulls 80-130 lbs. 70.00-131.00, mostly 90.00-115.00; Hol. Heifers 80-175 lbs. 85.00-194.00, mostly 100.00-185.00.

HOGS: 8176. Compared with 7009 head last week and 8869 head a year ago. Barrows and gilts steady to 1.00 lower. US No. 1-2 200-240 lbs. 51.00-52.30. No. 1-3 200-250 lbs. 48.50-51.00; No. 2-3 195-270 lbs. 46.00-48.50; No. 1-3 140-190 lbs. 38.00-46.00; Sows mostly 1.00 lower. US No. 1-3 300-585 lbs. 38.00-47.00; No. 2-3 300-650 lbs. 36.00-39.00. Boars 33.00-37.00.

FEEDER PIGS: 1962. Compared with 1528 head last week and 2152 a year ago. 1.00-2.00 higher. US No. 1-3 20-35 lbs. 12.00-20.00 per head; No. 1-3 35-50 lbs. 18.00-30.00; No. 1-3 50-85 lbs. 26.00-40.00; Utility 40-85 lbs. 19.50-25.00.

GRADED FEEDER PIGS: 2673. Compared to 3741 head last week, and 2285 head a year ago. All sales by CWT. Feeder Pigs highly uneven extremes \$11 higher to \$17 lower, US No. 1-2 30-40

lbs. 69.00-87.00, mostly \$6-10 lower, 40-50 lbs. 69.00-83.50, 50-60 lbs. 60.00-81.00, 65-85 lbs. 41.00-43.00, US No. 2-3 20-40 lbs. 43.00-63.00, 40-50 lbs. 40.00-60.00, 50-65 lbs. 35.00-43.00.

SHEEP: 827. Compared with 748 head last week and 769 head a year ago. Spring sl. lambs steady to strong. Choice 60-115 lbs. 59.00-65.50 few to 75.00; Good 50-100 lbs 55.00-62.00; SI. ewes 15.00-28.00.

Chambersburg Auction

Thursday, August 28

Report supplied by PDA

CATTLE: 376. Compared with last Thursday's market: SI. cows \$1.50-2 lower; SI. steers: few High Choice & Prime 72.75-74.00; Choice 67.00-72.00; Good 61.00-66.25; Standard 56.50-61.75; S. heifer: few High Choice & Prime 68.00-69.50; Choice 63.50-67.50; 735-820 lbs. 60.25-64.50; few Good 60.00-63.00; few Standard 55.00-56.75; SI. cows: Utility & Commercial 45.50-49.35; Cutters 44.50-48.10; Canner & L. Cutter 39.60-45.00; Shells down to 33.50; SI. bullocks: Good 57.50-62.50; Standard 53.50-58.00; SI. bulls: Yield Grade No. 1 & 2 1060-1870 lbs. 55.50-62.75.

FEEDER CATTLE: Steers, Medium & Large Frame No. 1, 380-700 lbs. 55.00-68.00; Few Medium & Large Frame No. 1, 300-400 lbs. 70.00-80.00.

CALVES: 553. Vealers grading Good & Choice mostly \$5 higher, Standard & Good steady, bulk of supply returned to farm. Choice 85.00-101.00; Good 74.00-88.00; (Standard 60.00-73.00); Standard & Good 90-110 lbs. 63.00-73.00; 65-85 lbs. 55.00-66.50; Utility 50-90 lbs. 35.00-57.00.

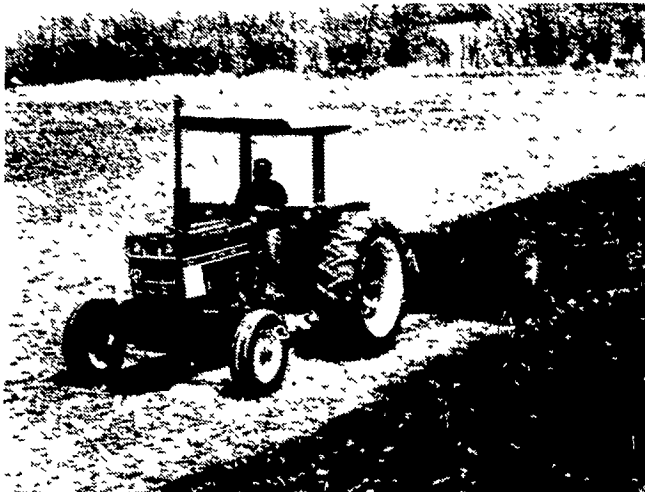
FARM CALVES: Hol. Bulls 90-130 lbs. 90.00-131.00, few 75.00-90.00; Hol. Heifers 80-130 lbs. 100.00-185.00; 65-85 lbs. 71.00-107.50. Beef cross bulls and heifers 60-100 lbs. 70.00-105.00.

HOGS: 93. Barrows and gilts \$2 lower. No. 1-3 200-235 lbs. 49.25-49.75; 1 lot 95.00-44.25; 1 lot No. 2-3 295 lbs. 43.75; No. 1-3 140-150 lbs. 35.50-40.50; Sows mostly \$2 lower; US no. 1-3 310-660 lbs. 37.50-43.75; one at 45.25. Few Boars 36.00-36.75.

FEEDER PIGS: 47. 1 lot US No. 1-3 50 lbs. 23.50 per head.

SHEEP: 16. Spring sl. lambs Choice 110 lbs. 65.00; 1 lot Good & Choice 80 lbs. 57.50; few SI. ewes: 21.00-26.00.

WHAT'S NEW



IH's new 884 tractor is powered by a 268 cu. in. diesel engine producing 72.5 PTO horsepower. A torque amplifier transmission providing 16 forward and eight reverse speeds is standard.

Offers new row-crop tractor

CHICAGO, Ill. — International Harvester has announced availability of its new 884 tractor in row-crop and utility versions for the over-70 PTO horsepower class. A low-profile model also is available for special applications.

The 884 is powered by a four-cylinder, direct injection 268 cu. in. diesel engine producing 72.5 PTO horsepower. The dual speed 540/1000 rpm independent PTO is hydraulically actuated to reduce shock loads and for "feathering" in and out of operation.

A torque amplifier transmission providing 16 forward and eight reverse speeds is standard on the new tractor. With this transmission, the operator can shift from direct drive into torque amplifier or vice versa on the go without clutching or throttling. Pulling back on the torque amplifier lever increases drawbar pull 22 percent, while decreasing speed 17

(Continued from Page A10)
Maryland State Fair continues through September 2.

Sunday, August 31

Deadline for Keystone International Livestock Exposition entries.

Monday, September 1
Happy Labor Day

Cambria County Fair, continues through September 6; Ebensburg.

South Mountain Community Fair, continues through September 6; Arendtsville.

Ox Hill Fair, continues through September 6; Home.

Spartansburg Community Fair, continues through September 6; Spartansburg.

Waterford Community Fair, continues through September 6; Waterford.

N.J. Flemington Fair.

Tuesday, September 2

Pymatuning Community Fair, continues through September 6; Jamestown.

Wednesday, September 3
Standardbred Yearling Sale, continues through Thursday; Farm Show Complex, Harrisburg.

Hunterdon County N.J. Ag Board Monthly Meeting; 8 p.m.; Extension Center. Thursday, September 4

Pequea Twp., Lancaster County Ag Zoning Hearing, Pequea Township Bldg., 7:30 p.m.

Friday, September 5
Dallas Area Fair, Dallas, Continues through Sept. 8.

York Inter-State Fair, York, Continues through Sept. 13.

Land Use, Act 442, meeting, Lancaster County Courthouse, Commissioners Room, 5th floor, 10 a.m.

Saturday, September 6
District 4-H Horse Show, Lancaster Riding Club.

Woodburners Expo, Kutztown Fairgrounds, Continues through Sept. 7.

Murphy, Au Series, Model 850 CT
300 KW generator set, 240/480V,
3 ph., 330 KW Max., Rebuilt engine, with enclosure.

\$28,000⁰⁰

Murphy, MP Series, Model MP22,
175 H.P. @ 1200 R.P.M., Used,
has flex coupling only, no clutch.

\$10,000⁰⁰

For Details, Contact:

DIESEL SERVICE, INC.

(215) 375-8572

WIN!

An International 2+2
or one of 5 other IH tractor prizes.

Sign up at our Red Power Showdown Day.

Grand Prize
—A 150 hp 3588
International 2+2
tractor

Four 2nd Prizes
—42 hp Series
84 484 utility tractors

1st Prize
—A 131 hp Series
86 1086 tractor



See Page B44 For Complete Details

R.S. HOLLINGER & SON INC.

113 W. Main St., Mountville
PHONE: 717-285-4538

INTERNATIONAL QUALITY PARTS
FACTORY TRAINED SERVICEMEN

Mon. thru Thurs. 7 to 8
Fri. 7 to 5:30; Sat. 7 to 3

In York County call Our Salesman:
CHARLES M. LEHMAN — 717-755-6486

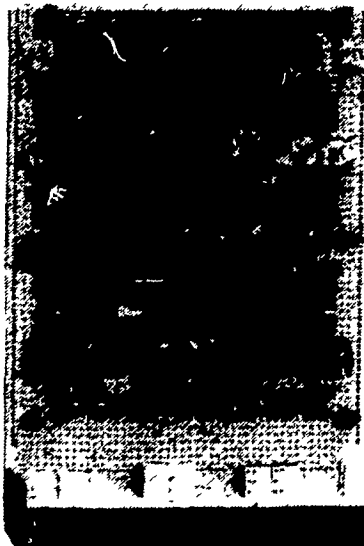
**MEMO
HAY,
STRAW &
EAR CORN
SALE**

EVERY MONDAY
At 11 A.M.

NEW HOLLAND SALES
STABLES, INC.

Phone 717-354-4341
Lloyd H Kreider, Auct

20% OFF PTO Parts



**PTO
PARTS
&
SERVICE**

SCENIC ROAD FARM SUPPLY

3539 Scenic Rd., Gordonville, PA 17529

2½ Miles S.W. of New Holland

1½ Miles N. of Intercourse

We Ship U.P.S.