

PATTERSON SEED SERVICE

Stanford Seed Co. - Northrup King Seeds

We Are Now Taking Orders
For The Following:

Wheat

- Hart
- Redcoat
- Abe
- Arthur
- Potomac
- Pennoll
- Logan

Barley

- Pennrad
- Henry
- Barsoy
- Maury

We Also Have

- Vetch
- Timothy
- Alfalfa
- Pasture Mixes
- Clover
- Rye

Get your order in early so you can be assured of varieties you need. You can pickup or we'll deliver when you're ready to plant.

Call Collect - 302-239-3233

Carole Dum captures double champion honors

NEWPORT — Carole Elaine Dum, showed the Grand Champion Holstein of both the Open and 4-H shows at the Perry County Fair at Newport. Her Senior Two-Year-Old Cow, Ben-Lov Fury Ivan Lua, is owned by Carole.

She is also the breeder, which won her a special trophy. As a senior showman she also showed the first-place aged cow in both shows. Carole has completed the 4-H Dairy Project eight years with outstanding achievements during this

period. Other successful 4-H members included Reserve Grand Champion, Dan Albright; Junior Champion, Richard Kriebel; Reserve Junior Champion, Irene Benner; Senior Champion, Carole Dum; Reserve Senior Champion, Dan Albright; 1st Junior Calf, Nancy Ann Dum; second place, Rodney Albright; 1st Intermediate Calf, Darla Bratton; second place, Julie Sheibley; 1st, Senior Calf, Jennifer Kriebel; second place, Daniel Albright; 1st Jr.



Grand champion open and 4-H Holstein at Perry County Fair is shown with owner, Carole Dum.

A building with almost unlimited possibilities . . .

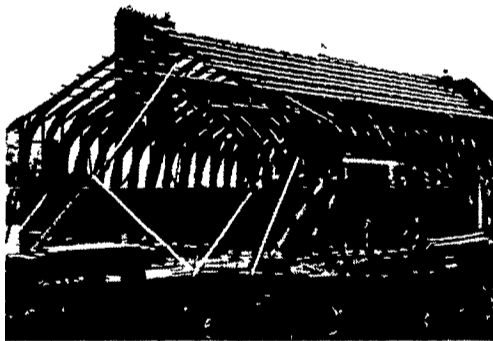
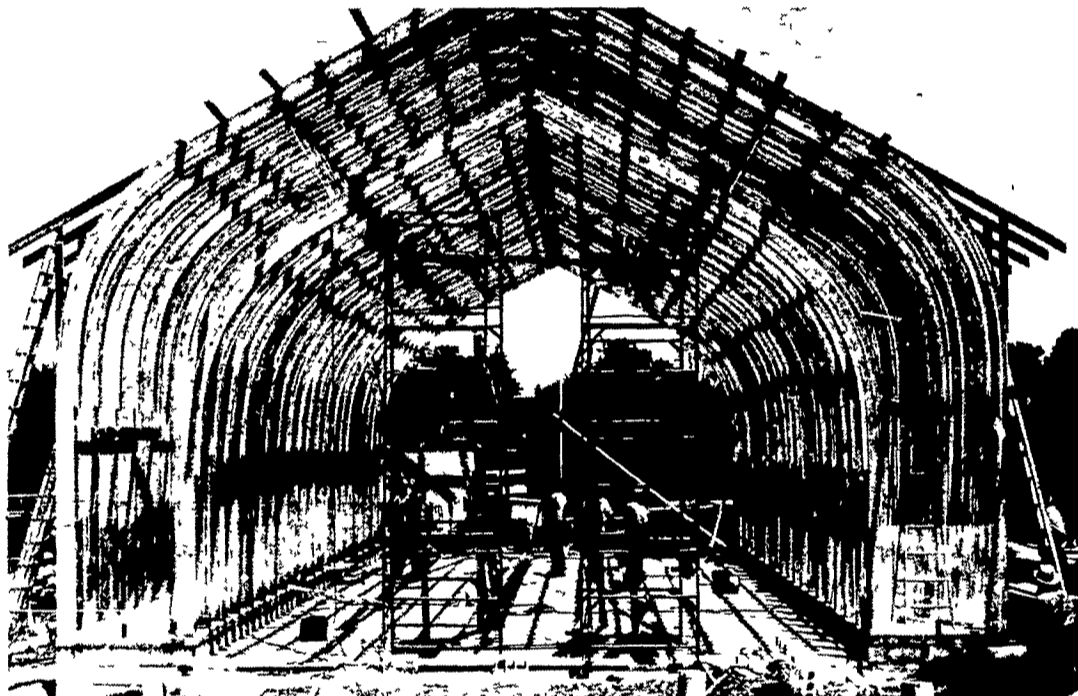


The Evolution of the American Corncrib 1977

Laminated Uni-arch design makes all inside space useful — even close to walls, and permits economical installation of roofing and siding materials

ARCHES IN STOCK

Large Volume Grain and Storage Implement Building



Beginning with the earliest American farms, corn on the cob was seasoned and dried by allowing air to flow around it; this kept away mold. From simple, square cribs of alternately piled logs, covered by a sloping roof, the corncrib evolved to the drive-in crib. The sidewalls always slanted outward at the eaves. On a great many mountain farms this was the beginning of barn architecture, for by adding doors in the driveway wall, you have the simplest American barn.

Today, a much more efficient structure for the storage of corn — along with large farm implement storage — is provided by the imaginative use of the Laminated Rafter. The exceptional strength of this aesthetically pleasing arch may be readily combined with simple construction, requiring a minimum amount of materials and erection time. It is a structure that permits great flexibility, because all inside space is useable, offering so many possibilities for a variety of farming needs.

Rigidply Rafters, Inc.
Structural Imagination for Today's Farming

Telephone: (717) 866-6581

RIGIDPLY RAFTERS N.C.

MANUFACTURERS of LAMINATED RAFTERS and WOOD ROOF TRUSSES

RICHLAND RD1, Pennsylvania 17087
OAKLAND RD2, Maryland 21550



A building with almost unlimited possibilities:

- ▶ Over 5,000 bushels ear corn storage
- ▶ Sheltered area to load and unload
- ▶ To hold against price fluctuations
- ▶ Convenient feed-preparation space
- ▶ Large equipment storage flexibility
- ▶ Up to 1,440 sq. ft. for other crops

Yearling, Richard Kriebel; second place, Steve Morrow; 1st Senior Yearling, Irene Benner; second place, Kimberly Kriebel.

1st Dry Cow, Juanita Trout; 1st Jr. 2 Year Old Cow, Jon Reapsome; second place, Nancy Stephens; 1st Sr. 2 Year Old Cow, Carole Dum; second place, Daniel Albright; 1st 3 Year Old Cow, Jennifer Kriebel; second place, Irene Benner; 1st 4 Year Old Cow, Kimberly Kriebel; 1st 5 Year Old Cow, Carole Dum; Best Udder Cow, Daniel Albright; Owner-Breeder Class Type, Carole Dum.

Senior Showmanship winners were Jon Reapsome, Nancy Stephens and Brian Rock, while the Junior Division was won by Jennifer Kriebel, Irene Benner and Richard Kriebel. Brian Rock won Senior Fitting

recognition and Marcia Gray and Steve Morrow captured the younger group honors.

The successful Jersey 4-H'ers were Junior Champion Jersey, Jeffery Holman; Reserve Junior Champion, Henry Holman III. Senior Champion, Clifton Brubaker and Reserve Senior Champion, Brian Rock. The Grand Champion was shown by Clifton Brubaker and Reserve Grand Champion by Brian Rock.

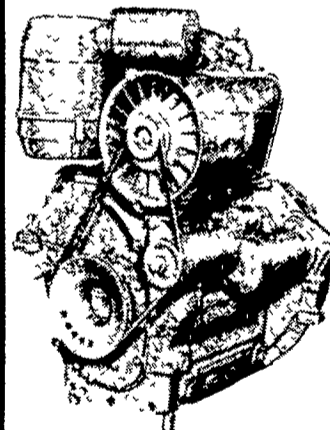
A record 110 entries participated in the Open, 4-H and FFA Shows.

PENNSYLVANIA AGRICULTURE



WE'RE GROWING BETTER

NO. 1 DAIRYING DIESEL



Since 1968 F2L-912 diesels have earned the reputation as the most reliable diesel. Don't settle for less.

2 Cyl. F2L-912 (New Style)

EASIER STARTING: Heavy flywheel provides easy starting. No electric heater plugs.

QUIETER: Runs quieter than most water cooled diesels. Very quiet exhaust.

F2L-912 SPECS: 22 Hp @ 1500 RPM
27 Hp @ 1800 RPM
34 Hp @ 2300 RPM

It has direct injection, lube oil cooling, and oil cooled pistons. This engine has proven to survive the extreme heat of a heavy load in a small engine house better than any other engine.

PLUS - FAMOUS DEUTZ FUEL ECONOMY

ASK ABOUT STAUFFER'S
5-YEAR ENGINE HEAD
& BLOCK WARRANTY

Stauffer Diesel Inc.

312 W. Main St. New Holland, PA
Ph: 717-354-4181