



**THE OLD FARMER'S ALMANAC**

**AUGUST 25-31, 1980**

Beat the heat with a hasty retreat.

Oysters in season now Brigham Young died Aug 29, 1877  
Full moon Aug 25 (a partial eclipse of the moon on Aug 25 will be visible from most of the country) Average length of days for the week, 13 hours, 17 minutes First combination gas-electric auto delivered Aug 30, 1929 First *deserve*, then *desire*



Ask the Old Farmer: Folks in Maine would threaten to give a child a "tin ear" if he didn't behave. What's the origin of the expression? K.L., Kennebunk, Maine  
There is more or less reason for supposing that the word was originally "tinge" relating to color and, maybe a burning sensation

Home Hints: A handful of flour bound on a cut stops bleeding

**OLD FARMER'S WEATHER FORECASTS**

**New England:** Thundershowers, heavy south, and cool most of week, weekend brings rain

**Greater New York-New Jersey:** Beginning of week brings thundershowers, cooling temperatures, then rain coast and south, seasonal, by weekend

**Middle Atlantic Coastal:** Heavy rain, cool temperatures all week, weekend is clear and hot

**Piedmont & Southeast Coastal:** Rain central and west, showers east, and hot through midweek, then heavy thundershowers, seasonal temperatures

(All Rights Reserved Yankee Inc Dublin N H 03444)

**Oklahoma Cattle**

Thursday, August 21  
Report supplied by USDA

**CATTLE AND CALVES:** 10,000 Same day last week: \$166.

**CATTLE AUCTION:** Feeder Steers over 500 lb. steady to 1.00 higher, heifers over 500 lb. steady; Steer and Heifer calves under 500 lbs. 1.00-3.00 higher. Trading active. Bulk of the supply medium frame No. 1 500-800 lb. Steers and 400-600 lb. Heifers. Actual unloads falling short of early est. by nearly 200 head. Good buyer attendance.

**FEEDER STEERS:** Medium Frame No. 1: 375-500 lb. 80.25-85.00; lot 420 lb 87.00; 500-600 lb. 76.00-80.50; 600-700 lb. 74.00-75.50; load 655 lb. 78.00; 700-800 lb. 71.75-75.50, bulk 72.75-75.50; load 715 lb. 76.25; 800-900 lb. 70.75-72.75. Medium Frame No 1-2: Part load 485 lb. 78.00; 500-600 lb. 72.25-75.00; load thin guant 560 lb. 78.00; 650-825 lb 69.25-70.75. Large Frame No 1: Lot 495 lb 80.50; lot 650 lb 75.50; lot 825 lb. 71.00. Large Frame No. 1-3: 600-700 lb 70.50-72.75; lot 735 lb 72.75; 800-900 lb. 67.00-69.00 Large Frame No. 2: 600-700 lb

68.00-71.00. Large Frame No. 2 Holsteins: Lot 765 lb. 61.00; lot 940 lb. 57.50.

**FEEDER HEIFERS:** Medium Frame No. 1: 400-500 lb. 68.75-75.25; lot 400 lb. 77.50; 500-600 lb. 67.00-68.75; 600-650 lb. 65.50-67.25. Medium Frame No. 1-2; lot 465 lb. 66.50. Medium Frame No. 2: Lot 615 lb. 64.75.

**FOR THE WEEK:** Feeder Steers 1.00-3.00 higher; Heifers under 500 lb. 1.00-3.00 higher. Heifers over 500 lb. steady. Slaughter cows steady to 1.00 lower; late sales included Utility and Commercial 2-4 42.00-45.75; Cutter 1-2 39.50-44.25, Canner and Low Cutter 38.25-40.00. Slaughter Bulls closed the week steady to 1.00 higher. YG 1-2 1375-1700 lb. 51.00-56.25. Saleable receipts this week near 40,800 compared with 29,186 last week Feeder Steers and Heifers comprised 93% of week's receipts Cows and Bulls 7%



**Omaha Cattle**

Thursday, August 21  
Report supplied by USDA  
Midweek prices on slaughter steers ranged unevenly 50-1.25 lower. Heifers were mostly 1.00 lower. Cows closed 50-1.00 lower and bulls were firm. Four day receipts this week 10,800; last week 14,000; year ago 15,200.

Slaughter steers and heifers sold at firm prices on the initial session under a good demand. Sharp price declines were enforced on Tuesday, however, in reflection of a downward plunging carcass trade, and most buying interests were competitive only for minimum numbers. This was the greatest weekly downturn in nearly three months. Best demand continues to center on Choice and Prime 1150-1300 lbs. Steers and same grade 950-1050 lbs. heifers. Feeder buyers were only mildly active on two-way steers suitable for a short turn in the feedlot. Slaughter steers made up approximately 46 pct of the week's total and heifers 34 pct; much of the supply was Good to Average-Choice. Cows made up 12 pct and feeders 6 pct.

**STEERS:** On Monday, load Choice 3 1283 lbs. 76.25. At midweek, load Choice with end Prime predominantly 3 1250 lbs. At midweek 72.50-73.50; Choice 2-3 1000-1125 lbs. 71.50-73.00. Mixed Good and Choice 2-3 1000-1250 lbs. closed 70.50-72.00. Good 2-3 66.00-70.00. Few consignments Good and Choice 2-3 1200-1350 lbs. holsteins 63.00-65.50.

Average of LS-214 detailed quotations for Choice 900-1100 lbs. steers this week 72.52, Choice 1100-1300 lbs. 73.38. Average cost slaughter steers this week 72.53, average weight 1137 lbs. as compared 72.91 and 1132 lbs. a week ago. Average cost heifers 67.82, average weight 963 lbs. as compared 68.55 and 969 lbs. a week ago.

**HEIFERS:** Early, part load Choice 3 1025 lbs. 70.75, several loads Choice and Prime 3-4 962-1074 lbs. 70.00-70.50. At midweek, load Choice and Prime 3-4 991 lbs. 69.75; part load same grade 1000 lbs. 69.00. Choice 2-4 900-1050 lbs. 67.00-68.50. Mixed

Good and Choice 2-3 850-1050 lbs. 65.00-67.00. Good 2-3 62.00-65.00

**COWS:** Utility and Commercial cows 43.50-46.50, some high-dressing 47.00-48.00. Cutter 42.00-44.00. Canner and Low-Cutter 41.00-42.50.

**BULLS:** 1-2 1200-2100 lbs. 52.00-58.00, individual 1 59.00-60.00.

**Joliet Cattle**

Thursday, August 21  
Report supplied by USDA

**CATTLE:** Friday through Wednesday's saleable receipts 3,300; 5 days last week 4,225, same period a year ago 6,200. Trading moderate on Monday; slow on Wednesday. Slaughter steers ended the week 75 to 2.00 lower than Wednesday of last week. Slaughter Heifer ended the week 1.00 lower. Cows ended the week steady to weak.

**SLAUGHTER STEERS:** Mixed High Choice and Prime 3-4 1150-1300 lbs. 73.50-74.50 Monday; 72.50-73.00 Wednesday. Load Choice mostly 3 1180 lbs. 75.00 Monday. Choice 2-4 1000-1250 lbs. 72.00-74.00, mostly 72.50-73.50 Monday; 71.00-73.00, mostly 71.50-72.75 Wednesday. Mixed Good and Choice 2-3 1000-1250 lbs. 70.00-72.00 Monday; 71.00-71.50 Wednesday. Choice Holsteins 1350-1500 lbs. 63.50-64.50 Monday.

**SLAUGHTER HEIFERS:** Mixed Choice and Prime 3-4 950-1050 lbs. 69.50, Load 69.75 Monday; 68.50 Wednesday. Choice 2-4 900-1050 lbs. 68.25-69.50 Monday; 67.00-68.25 Wednesday. Mixed Good and Choice 2-3 800-1000 lbs. 66.50-

68.00 Monday; 65.50-67.00 Wednesday.

**COWS:** Utility & Commercial 1-3 45.00-48.00 Monday & Wednesday; 44.00-47.00 Thursday.

**Dewart Auction**

Monday, August 18  
Report supplied by PDA

**CATTLE** 185. Compared with last week's market, slaughter cows \$1-\$1.50 lower. Choice 2-4, 1100-1300 lbs. slaughter steers 67.75-73.75, Good 63.00-67.00, few Standard 59.75-62.50. Few Standard and Good slaughter heifers 58.75-63.50. Utility & Commercial slaughter cows 45.75-50.75, couple to 51.60, Cutters 44.50-47.85, Canner & Low Cutters 42.85-44.50, Shells down to 40.00. Few Yield Grade #1, 800-1550 lbs. slaughter bulls 55.50-64.00. Few Large Frame #1, 300-400 lbs. feeder heifers 80.00-88.00. Few Large Frame #1, 300-425 lbs. feeder bulls 98.00-102.00.

**CALVES** 206. Vealers steady to strong. (Bulk of supply returned to farm). Individual Prime vealer at 107.00, Choice 91.00-103.00, few Good 80.00-85.00, Standard & Good 70-95 lbs. 65.00-77.00. Farm Calves: Hol. Bulls 90-130 lbs. 90.00-103.00, few 110.00; Hol. Heifers (few) 90-135 lbs. 145.00-172.50.

**HOGS** 476. Barrows and gilts 75 cents-\$1 higher. US No. 1-2 200-230 lbs. barrows and gilts 51.00-51.70, No. 1-3 200-240 lbs. 49.75-51.00, few lots No. 2-3 220-300 lbs. 44.00-48.00, No. 1-3 170-190 lbs. 42.00-46.00. US No. 1-3 300-700 lbs. sows 39.50-44.00, No. 2-3 300-600 lbs. 37.00-40.00. Boars 27.00-33.00.

**FEEDER PIGS** 187. US No. 1-3 20-35 lbs. feeder 16.00-23.50 per head, No. 1-3 35-50 lbs. 21.00-26.50. No. 1-3 55-70 lbs. 29.00-36.00 per head. Utility 10-25 lbs. 13.00-16.50 per head.

**SHEEP** 15. Few Choice 90-110 lbs. spring slaughter lambs 58.00-61.00. Slaughter ewes 20.50-23.50.

**Valley Livestock**

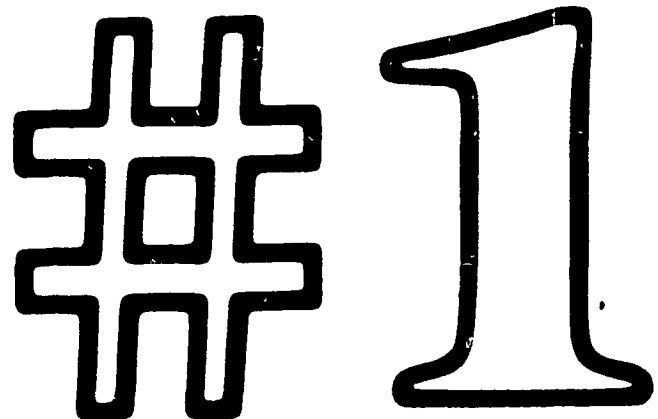
Valley Stockyards  
Athens, Pa.

Monday, August 18

Report supplied by auction  
Reported receipts of 140 cows, 17 bulls, 426 calves, 25 heifers, 10 steers, 61 hogs, 22 lambs, 12 sheep. Cattle market reported steady, calf market reported steady.

Holstein Heifer Calves to 190.00; Veal Calves to 85.00; Bobs, 90-110 lbs. 75.00-90.00; Bobs, 80 and down lbs. 60.00-68.00; Grassers & Feeders 45.00-90.00; Lambs 50.00-67.00; Sheep 22.00-36.00; Hogs, 200-250 lbs. 42.00-49.50; Sows 34.00-43.50; Boars 24.00-29.00; Pigs 8.00-24.50; Heifers 48.50-54.50; Steers, hol. 50.00-54.50; Steers, feeder 55.00-58.50; Bulls 50.00-55.00; Cows, utility 48.00-52.25; Cows, fat 45.00-47.50; Cows, medium 42.00-44.50; Cows, poor or small 36.00-41.00; Horses to 570.00; Ponies to 70.00; Goats 12.00-53.00.

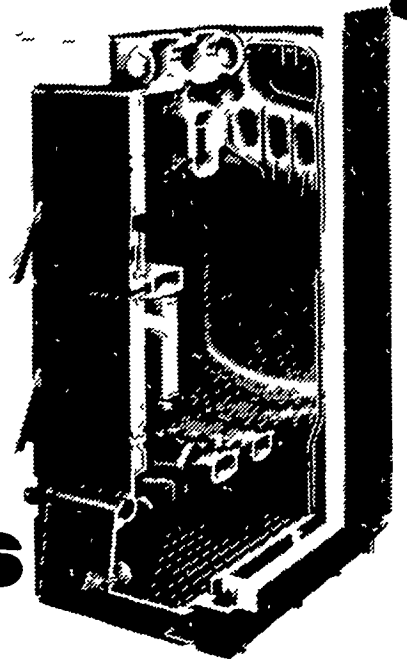
One hundred and 25 million dollars is spent each year to dredge sediment from harbors and waterways across the country.



**WOOD OR COAL**

Find out why we're #1 in the World!

- Adds on to your existing Hot Water Heating System.
- Cast Iron Construction.
- Wet Base.
- ASME Approved.
- Burns Wood or Coal.
- Converts to Oil or Gas.
- Automatic Control.



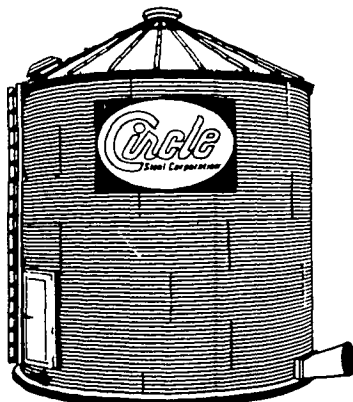
**Buderus**

**HOWARD E. GROFF CO.**

Fuel Oil, Gasoline, and Coal  
111 E. State Street, Quarryville, PA 17566  
Phone: 717-786-2166

Years from now ...

**YOU'LL BE GLAD YOU HAVE A CIRCLE**



When the rust starts to eat away when the bolts start to pop when doors won't open on the bin that your neighbor bragged about as being so cheap — then you'll be glad you bought the Circle Steel Bin with deeper galvanizing, alloy bolts, firm foundation

Look into the Circle, at



PHONE 717-538-2591