

Livestock market and auction news

Indiana Auction

Thursday, August 21
Report supplied by PDA

CATTLE 88: Compared with last Thursday's market. Sl. steers; Individual Good 65.50; few Standard 54.00-56.75; few Good 56.00-58.00; few Standard 43.75-44.25; Sl. cows: Utility & Commercial 46.00-49.75; Cutters 43.00-47.00; Canner & L. Cutter 39.00-45.50. Sl. bulls; few Yield Grade No. 1-2 1100-1550 lbs. 48.00-58.00.

FEEDER CATTLE: Steers Medium & Large Frame No. 1, 500-775 lbs. 55.00-65.50; Medium & Large Frame No. 2, 300-675 lbs. 53.00-58.00.

CALVES 117: Vealers grading standard & good unevenly steady; few Choice 90.00-100.00; few Good 80.00-90.00; Standard & Good 90-120 lbs. 70.00-80.00; 70-90 lbs. 64.00-72.00; few Utility 55-120 lbs. 50.00-65.00.

FARM CALVES: Hol. Bulls 85-120 lbs. 80.00-95.00; Hol. Heifers 85-120 lbs. 90.00-142.50. Beef cross Steers and Heifers 75-100 lbs. 70.00-110.00.

HOGS 75: Barrows and gilts 50-100 lbs. No. 1-3 200-240 lbs. 48.50-50.50; No. 2-3 195-270 lbs. 45.50-48.00, few No. 1-3 160-170 lbs. 31.25-40.00; Sows US No. 1-3 300-510 lbs. 38.00-43.75; few to 45.00. Boars 25.00-31.50.

FEEDER PIGS 62: US No. 1-3 30-40 lbs. 13.00-16.00 per head; No. 1-3 55-65 lbs. 18.00-22.00; No. 1-3 80-120 lbs. 22.50-26.00.

SHEEP 52: Lot Choice 85 lbs. 59.50; Good 60-80 lbs. 50.00-56.00; Sl. ewes 12.00-23.00.

Pa. Auction Summary

Friday, August 22

Report supplied by PDA
CATTLE: 6475. Compared with 6607 head last week, and 7254 head a year ago. Compared with last week's market: Slaughter steers grading high Choice & Prime steady to \$1 lower; Standard

& Good \$1-2 higher; Sl. heifers steady to \$1 lower; Sl. cows 50 cents-\$2 lower; Sl. bullocks fully \$2 lower; Sl. bulls mostly \$1 lower. Sl. steers: High Choice & Prime No. 3-4 72.00-76.25; Choice No. 2-4 69.35-75.75; Good 63.00-70.00; Standard 57.00-63.00; Sl. heifers: Choice 62.00-67.00; Good 59.00-65.00; Standard 52.00-60.00; Sl. cows: Utility & Commercial 47.00-52.00, few 53.50; Cutters 45.00-49.75; Canner & L. Cutter 40.00-46.50; Shells down to 35.00. Sl. bullocks: Choice 59.00-65.00; Good 56.00-62.00; few Standard 53.00-57.00; Sl. bulls: Yield Grade No. 1 1000-2300 lbs. 56.00-65.50; Yield Grade No. 2, 1000-1700 lbs. 55.00-60.00.

FEEDER PIGS 1528. Compared with 1613 head last week and 1641 a year ago. Steady to \$2 lower. US No. 1-3 20-35 lbs. 10.00-21.00 per head; No. 1-3 35-50 lbs. 17.00-28.00; No. 1-3 50-80 lbs. 27.00-36.00.

GRADED FEEDER PIGS: 3741. Compared with 2922 head last week and 2369 head a year ago. All sales by CWT. Feeder Pigs weak to \$7.00 lower. US No. 1-2 25-40 lbs. 64.00-93.00, 40-50 lbs. 62.00-86.00, 50-60 lbs. 49.00-77.00; 60-75 lbs. 47.00-76.00, US No. 2-3 25-40 lbs. 60.00-76.00; 40-50 lbs. 47.00-70.00; 50-70 lbs. 43.00-64.00.

SHEEP: 748. Compared with 731 head last week and 601 head a year ago. Spring sl. lambs uneven. Choice 65-100 lbs. 58.00-71.25; Good 60-90 lbs. 48.00-60.00; Sl. ewes: 15.00-30.00.

FARM CALVES: Active. Hol. Bulls 80-125 lbs. 70.00-123.00, mostly 90.00-110.00; Hol. Heifers 85-150 lbs. 80.00-

Northampton youth compete at 4-H Fair

BY VIVIAN PAUL
Staff Correspondent

BUSHKILL CENTER — Youngsters throughout Northampton County showed their skills and interests at the three day 4H Fair held last week.

The horse show, always a popular event, attracted 36 entries in 29 classes. Dairy, beef and sheep shows were added highlights.

Grooming and showmanship trophies went to John Lehr in the junior class and Rebecca Lehr in the senior class.

Other class winners were. Junior stock seat equitation - Kristi Cochios; senior saddle seat equitation - Sue LaBarre; junior hunter seat equitation - Kristen Herschman; senior stock seat equitation - Kathy Lorah; senior hunter seat equitation - Rebecca Lehr; pole bending, 13.2 hands and under - Wendy Lynn Fink; pole bending, over 13.2 hands - Kathy Kozero; walk trot - Jennifer Getz; pair class - Linda Bartell and Nannette Gosnell.

Hunter under saddle, ponies - Laurie Levine; hunter under saddle, horses - Marcel Cramsey; open trail,

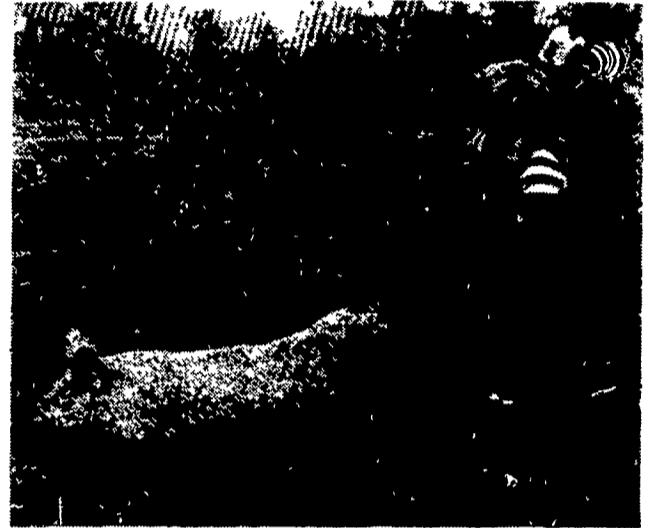
13.2 hands and under - Christina Bundy; open trail, over 13.2 hands - Brenda Remaly; cloverleaf barrel race, 13.2 hands and under - Wendy Lynn Fink; cloverleaf barrel race, over 13.2 hands - Sheila Brewer.

Hunter seat equitation over jumps, junior - Jo Ann Rhulbright; hunter seat equitation over jumps, senior - Ahsa Malavolta; working hunter ponies, 14.2 hands and under - Jo Ann Rhulbright; working hunter

horses, over 14.2 hand s - Angie Kay Schleicher; western pleasure ponies, 12.2 hands and under - Christina Bundy; western pleasure ponies, over 12.2 and not over 14 hands - Marie Manniotta; western pleasure horses, over 14 hands - Sue Kostenbader.

Western riding contest - Denise Welsch; pleasure pony driving - Sue Bailey; saddle seat pleasure - Sue

(Turn to Page A27)



The greased pig competition had four legged and two legged winners.



SOMETHING
TO
CROW
ABOUT...

Lancaster Farming has over
37,000 subscribers



THINKING OF THE FUTURE — OR MAYBE NOW.



ABOUT:

- Milking Parlors
- Round-the-Barn Pipelines
- Trigon
- Polygon
- Side Open Stalls

WE AT SHENK'S FARM SERVICE ARE ABLE TO GIVE YOU THE COMPLETE

- LAYOUT
- SALES
- INSTALLATION
- SERVICE

AND THE PROFIT IS YOURS

SHENK'S FARM SERVICE

501 E. WOODS DRIVE, LITITZ, PA 17543
PH: 717-626-1151

★ OUR SERVICE TRUCKS ARE RADIO DISPATCHED ★ 24 HOUR SERVICE

After Business Hours Phone: Paul Reppin - 717-626-2837
Morvin Nissley - 717-472-4565



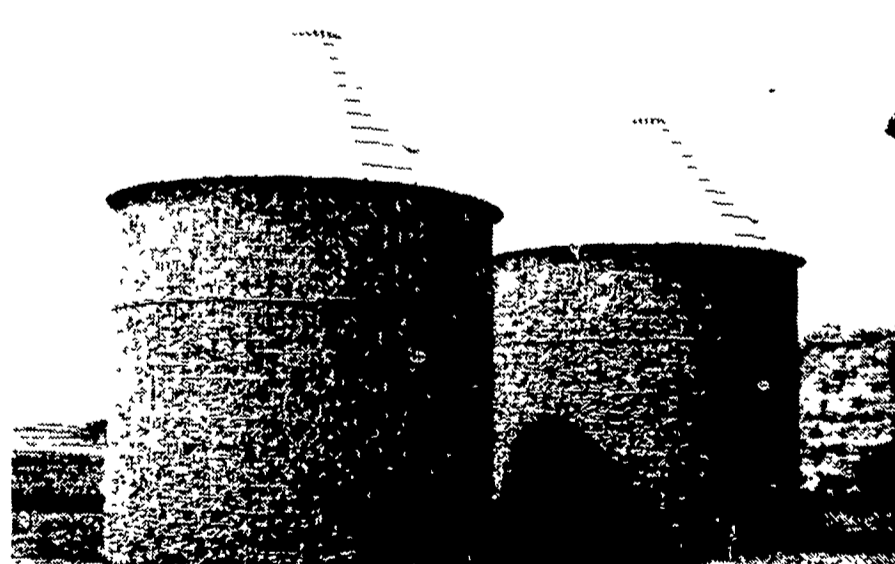
Demonstration of Good Milking will convince you that you should have Bou-Matic




AGWAY

Come See the Crib that
"OUTLAWS" RUST...
BEHLEN "STEEP PITCH" CORN CRIBS

Built for a Lifetime of Rugged Service. Every Behlen Corn Crib is Hot-Dip Galvanized after welding...completely covering all surfaces (including weld spots) with up to 6 times the amount of zinc found on ordinary cribs.

You'll Never See a Stronger Crib. The Behlen Crib is made of No. 4-gauge Bar Mesh Steel. Weathertight "Steep Pitch" roof fills to the peak without hand leveling. Extra-wide crib doors. In sizes from 611 to 1940 bushels.



	<p style="font-weight: bold;">CHAMBERSBURG</p> <p style="font-size: 0.8em;">717-263-4197</p>	<p style="font-weight: bold;">CARLISLE</p> <p style="font-size: 0.8em;">717-243-4312</p>
	<p style="font-weight: bold;">TEMPLE</p> <p style="font-size: 0.8em;">215-929-5264</p>	<p style="font-weight: bold;">LANCASTER</p> <p style="font-size: 0.8em;">717-394-0541</p>
<p style="font-weight: bold;">YORK</p> <p style="font-size: 0.8em;">717-792-2674</p>	<p style="font-weight: bold;">AVONDALE</p> <p style="font-size: 0.8em;">215-268-2043</p>	<p style="font-weight: bold;">DUBLIN</p> <p style="font-size: 0.8em;">215-249-3556</p>
 <p style="font-weight: bold;">TANEYTOWN.</p> <p style="font-size: 0.8em;">301-751-1130</p>	<p style="font-weight: bold;">CHAPMAN</p> <p style="font-size: 0.8em;">215-395-3381</p>	

Or Call: Agway Inc., Harrisburg, Pa. 717/564-0181