

# Livestock market and auction news

## East Coast Carlot

**Wednesday, August 13**  
**Report supplied by PDA**  
 Compared to Tuesday's close: Prime special fed veal no sales reported. Good and Choice boning veal steady to 4.00 lower than Monday's last adequate test. Boneless beef 90 chem lean firm compared to last week on limited test. Lamb and spring lamb carcass mixed weight loads compared to last week mostly 5.00 higher.

**VEAL CARCASS**  
**HIDE ON**  
 Prime (Special Fed): 180-240 lbs. no sales reported.  
**BONING TYPE**  
 Good and Choice  
 Northeastern Suppliers. 65-75 lbs. 104.00-108.00, all steady to 4.00 lower on Monday, bulk 108.00; 55-64 lbs. 102.00-106.00, bulk 106.00; 45-54 lbs. 100.00-104.00, bulk 104.00; 35-44 lbs. 104.00-105.00; 35-44 lbs. 98.00-102.00, bulk 102.00; 34 lbs. down 96.00-100.00, bulk 100.00.

Inshipped: No sales reported.

**SPRING LAMB CARCASS**  
**Choice & Prime 3-4**  
 1 Load  
 55-75 lbs. 142.00, few 143.00, mostly 5.00 higher.  
**SPRING LAMB CARCASS**  
**Choice & Prime 3-4**  
 6 Loads  
 55 lbs. down 142.00, mostly 5.00 higher, few 143.00-144.00; 55-65 lbs. 142.00, mostly 5.00 higher, few 143.00.

**BONELESS BEEF**  
 3 Loads  
 90 pct chem lean, fresh 138.00-140.00 firm.  
 75 pct chem lean, fresh 112.00.  
**BEEF TRIMMINGS**  
 2 Loads  
 50 pct chem lean, fresh 75.00 FOB East.

**CURED AND PROCESSED MEATS**  
 1 1/2 Loads  
 Skinned Hams. 16-20 lbs. 86.00-88.00  
 Semi-boneless Hams: 14-17 lbs. 112.00 weak.  
 Semi-boneless Hams: 17-20 lbs. 110.00 steady.

**Boneless Hams:** 13-17 lbs. 136.00 steady.  
**Picnics:** 5-7 lbs. 68.00.  
**No. 1 Sliced Bacon:** Vacuum Pack, 1 lb. pkg 112.00 firm.  
**Franks, 70 Beef, 30 Pork 1 Lb. Pack:** 80.00-88.50 steady to firm.

## Western Maryland Market

**Hagerstown, Md.**  
**Tuesday, August 5**  
**Report supplied by auction**  
**BUTCHER COWS:** Good run, 1.50 higher! High Yield 49.00-51.50; Standard & Utility 44.00-49.00; Canners 42.00-46.00; Shelly 43.00 Down. Bulls Good 1300-1500 lbs. 57.50-59.00; Med. 53.00-57.00; Steers Standard to 60.00; Heifers Standard to 58.00.

**BUTCHER HOGS:** Good demand, \$3 higher! US #1 & 3 215-240 lbs. 46.10-46.50; #1 & 3 240-260 lbs. 45.75-46.10; #1 & 3 195-210 lbs. 44.00-46.00.  
**SOWS:** 350-600 lbs. 39.25-42.00. **BOARS** 250-500 lbs. 32.50-33.25.  
**VEAL CALVES:** \$3 to \$5 higher. Good & Choice 85.00-93.00; Standard 75.00-85.00; Stocky & Thin 65.00-75.00; Killers 80-100 lbs. 70.00-80.00;

Weak & Rough 70.00 down.

**CALVES RETURNED TO FARM:** Heifers lower, Bull steady. Holstein Heifers 90-105 lbs. 100.00-127.00; Holstein Bulls 90-115 lbs. 90.00-114.00; Beef Type 80-100 lbs. 80.00-110.00.

**LAMBS:** Good & Choice 80-95 lbs. 52.00-60.00.  
**STOCK CATTLE:** Larger run, bidding active. Steers Choice 400-550 lbs. 75.00-80.00; Good 500-800 lbs. 53.00-69.00. Heifers Holsteins to 77.00. Beef type 50.00-60.00. Bulls Med. & Good 650-800 lbs. 50.00-54.00.

**PIGS AND SHOATS:** \$3 to \$6 lower! By the Head 15-30 lbs. 7.00-13.00; 30-50 lbs. 15.00-22.00; By the Lb. 100-165 lbs. 36.50.

## Dewart Auction

**Dewart, Pa.**  
**Monday, August 11**  
**Report supplied by PDA**  
**CATTLE** 148. Compared with last Monday's market, slaughter cows steady to \$1.50 higher. Choice No. 2-4 1050-1400 lbs. slaughter steers 67.25-70.00, Good 61.25-65.25, few Standard 57.00-61.60. Few Choice slaughter heifers 63.50-71.25. Utility & Commercial slaughter cows 47.00-51.85, couple to 53.85, Cutters 45.50-51.00, few Canner & Low Cutter 43.50-45.50, Shells down to 40.00. One Choice slaughter bullock at 66.10, few Good 60.00-64.50. Yield Grade #1 and #2 1180-2080 lbs. slaughter bulls 58.60-63.60.

**CALVES** 194. Vealers \$5 to \$8 lower; bulk of supply returned to farm. Choice & Prime vealers 90.00-100.00, Good 82.00-90.00, Standard & Good 70-95 lbs. 65.00-78.00. Farm calves, holstein bulls 85-120 lbs. 90.00-116.00; holstein heifers 95-130 lbs. 130.00-180.00.

**HOGS** 820. Barrows & gilts \$1.75 to \$3 higher. US No. 1-2 195-270 lbs. barrows & gilts 50.20-51.00, No. 1-3 185-250 lbs. 48.10-50.30, No. 2-3 240-270 lbs. 45.00-47.25, few lots No. 1-3 155-175 lbs. 35.00-45.00. US No. 1-3 300-550 lbs. sows 39.00-44.50, No. 2-3 300-600 lbs. 37.00-40.00. Boars 27.00-32.50.

**FEEDER PIGS** 224. US No. 1-3 20-35 lbs. feeder pigs 14.00-23.00 per head, No. 1-3 35-50 lbs. 21.00-32.00, No. 1-3 60-75 lbs. 29.50-36.50, Utility 10-20 lbs. 8.50-13.00 per head.  
**SHEEP** 36. Choice 80-115 lbs. spring slaughter lambs 56.00-60.00, one at 63.00, Good 50-80 lbs. 40.00-55.00. Few Slaughter ewes 21.50-46.00.

## Middleburg Auction

**Middleburg, Pa.**  
**Tuesday, August 12**  
**Report supplied by auction**  
**CATTLE** 288. High Choice & Prime slaughter steers 72.00-76.50, Choice 70.00-75.85, Good 65.00-70.00, Standard 60.00-65.00, Utility 56.00-60.00. Choice slaughter heifers 65.00-67.75, Good 60.00-65.00, Standard 55.00-60.00, Utility 52.00-55.00. Utility & Commercial slaughter cows 46.00-48.75, few to 50.50, Cutters 45.00-47.75, Canner & Low Cutter 42.00-45.00, Shells down to 40.00. Choice slaughter bullocks 65.00-68.00, Good 60.00-65.00. Yield Grade #1 slaughter bulls 58.00-67.50; yield grade #2 53.00-58.00.

**CALVES** 165. Prime vealers 92.00-98.00, Choice 85.00-92.00, Standard & Good 90-110 lbs. 65.00-85.00, 70-90 lbs. 60.00-65.00. Farm calves, holstein bulls 90-120 lbs. 75.00-110.00; holstein heifers 80-175 lbs. 100.00-167.50

**HOGS** 786. US No. 1-2 210-235 lbs barrows & gilts 50.50-51.35, No. 1-3 190-250 lbs. 50.00-50.50, No. 2-3 190-270 lbs. 48.00-50.00. US No. 1-3 340-620 lbs. sows 40.00-42.75, No. 2-3 275-400 lbs. 54.00-39.25. Boars 31.00-34.25

**FEEDER PIGS** 236. US No. 1-3 10-20 lbs. feeder pigs 10.00-20.00 per head, No. 1-3 20-40 lbs 20.00-30.00, Utility 40-60 lbs. 30.00-36.00 per head.

**SHEEP** 20. Choice spring slaughter lambs 63.00-68.00, Good 58.00-63.00

## Hunter's Auction

**Monday, August 11**  
**Rising Sun, Md.**  
**Report supplied by auction**  
**BULLS:** 1000-1400 lbs. 58.00-64.00.  
**COWS:** High Choice to Prime 51.50-53.25; Good to Standard 50.00-51.25; Utility 48.75-49.50; Cutters 46.50-47.75; Canners 40.50-44.00.  
**CALVES:** Prime 200-280 lbs. 89.00-94.00; High to Choice 140-180 lbs. 82.00-93.00; Good to Choice 120-140 lbs. 86.00-97.00; Standard to Good 90-110 lbs. 80.00-91.00; Utility 75-85 lbs. 65.00-83.00; Low Utility 65-75 lbs. 50.00-71.00.

**FEEDER PIGS:** 25-30 lbs. \$12 to \$16 by hd.; 30-40 lbs. \$16 to \$24 by hd.  
**HOGS:** 80-120 lbs. 22.00-38.00; 180-220 lbs. 46.00-48.50.  
**SOWS:** 38.50-40.00.  
**BOARS:** 33.00-37.50.  
**GOATS:** Nannies \$28 to \$43 by hd.; Kids \$18 to \$24 by hd.; Bilbes \$31 to \$39 by hd.

## Valley Livestock

**Valley Stockyards**  
**Athens, Pa.**  
**Monday, August 11**  
**Report supplied by auction**  
 Reported receipts of 98 cows, 20 bulls, 397 calves, 16 heifers, 3 steers, 92 hogs, 5 lambs, 8 sheep. Cattle market reported strong, calf market reported about steady.

Holstein Heifer Calves to 200.00, Veal Calves 68.00-85.50; Bobs, 90-110 lbs. 70.00-94.00; Bobs, 80 and down lbs 52.50-67.00; Grassers & Feeders 62.00-98.50; Lambs 55.00-61.00; Sheep 18.00-32.00; Hogs, 200-250 lbs. 43.50-48.50; Sows 27.00-39.50; Boars 27.00; Pigs each 6.50-16.00; Heifers 43.00-56.75; Steers none; Steers, feeder 54.50-59.50; Bulls 50.00-60.50; Cows, utility 48.00-54.00; Cows, fat 46.75-49.00, Cows, medium 42.00-47.75; Cows, poor or small 30.00-43.00; Horses per head 130.00-560.00; Ponies to 70.00; Goats 20.00-44.00.

## NEW HAY AUCTION

EVERY FRIDAY - 1:30 P.M.  
 Straw, Grain, Firewood, etc.  
 HORSE AUCTION - 7:30 P.M.  
**BEIL'S SALES**

1 Mi. North of York Springs on Route 15  
 Hay - 717-334-7724, David W. Martin, Auct./Mgr.  
 Horse - 717-528-8218, Wm. Artrip, Auct.

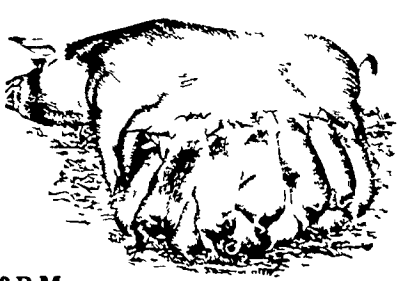
## PIGS

STATE GRADED SALE  
**FRI., AUG. 22**  
 1:30 P.M.  
 AT  
**WESTMINSTER LIVESTOCK AUCTION**  
 Westminster, Md  
 Phone (301) 848-9820

## NEW HOLLAND SALES STABLES, Inc.

12 Miles East of Lancaster  
 on Route 23, New Holland, Penna.

## WEEKLY FEEDER PIG SALE EVERY WEDNESDAY



Sale to Start at 1:30 P.M.

**SPECIAL SALES**  
 Tuesday, Evening, Aug. 26 6:30 P.M.  
 20 Bred Gilts  
 15 Registered Hampshire Boars  
 4 Registered Spotted Boars and Open Gilts  
 Consigned by Lee Bixler  
 Saturday, September 6, 1:00 P.M.  
 Registered Boars and Registered Gilts  
 Consigned by Franklin Feeser

We Will Receive Your Pigs Anytime  
 From 7 A.M. Wed. Morning  
 State Graded Until 12 Noon.  
 All pigs inspected by State Approved Veterinarian.  
 State tags available at our office for you to tag pigs at home to save 25 cents tagging charge.  
 Tags delivered if you call 717-354-4341 our office in advance.  
 Calf Sale To Be Held  
 Every Thursday At 3:30 P.M.

**NORMAN KOLB** 717-397-5538  
**ABE DIFFENBACH** 717-393-4464

## J. B. KELLER & BRO. DAIRY COWS



Mount Joy, PA 17552

**REGISTERED HOLSTEIN COWS & HEIFERS**  
**PACLAMAR ASTRONAUT**, 1st calf, due 10/13/80 to Jet Stream Dam 83 pt Design Ivanhoe 6-5, 348, 22,172, 845, 3 8  
**ROUND OAK RAG APPLE ELEVATION**, 1st calf due 1/25/81 to Willow Dam 83 pt Transmitter, 5-0, 305, 19,908, 702, 3 4  
**TUSKAHO CRISS LEADER**, 3rd calf due 8/30/80 to Conductor Matt 3-6, 326, 18,503, 652, 3 5  
**CITATION R MAPLE** 3rd calf due 10/22/80 to Ideal Superior Dam 80 pt Apollo  
**LIME-HOLLOW ADMIRAL D KOL**, 1st calf due 10/13/80 to Persuader  
**WESTMORELAND BRIGADIER**, 1st calf due 10/22/80 to Willow  
**BROOKFIELD LAMPLIGHTER-TWIN**, 1st calf due 11/21/80 to Timothy Dam Whirlhill Kingpin  
**VIGO CHARMCROSS**, 3rd calf due 11/27/80 to Jemini 3-6, 301, 14,522, 668, 4-6.  
**EXRANCO L TORO**, 3rd calf due 9/2/80 to Tippy

**REGISTERED HOLSTEIN BULLS**  
**RIPPCHEN BOOT-NICK**, born 8/23/79 Dam 85 pt Astronaut 7-3, 305, 21,219, 878, 4 1  
**WESTMORELAND BRIGADIER**, born 7/4/79 Dam 84 pt Ivanhoe Star 4-6, 305, 20,298, 743, 3 7  
**RIPPCHEN BOOT-NICK**, born 8/14/79 Dam 87 pt Astronaut 4-9, 305, 19,240, 778, 4 1  
 Also High Quality Grade Cows and Heifers.  
 Transportation and financing available.

**STEVE KELLER** 717-653-2284  
**BOB KELLER** 717-653-1523  
 Office: 717-653-4851

## ATTENTION FARMERS!!

**SPRAY MATERIALS**  
**IM-PRUV-ALL**  
**MEDINA SOIL ACTIVATOR**

Check Our Prices Before You Buy.  
**MELVIN R. WEAVER**  
 2213 Leabrook Road, Lancaster, PA 17601  
 Ph: 717-898-8354 or 569-6576