

BUY, SELL, TRADE OR RENT THROUGH THE

CLASSIFIED ADS

PHONE: 717-626-1164 or 717-394-3047

The following categories are available for your classified advertising

- Farm Equipment
- Silos & Unloaders
- Buildings & Supplies
- Grain Equipment
- Dairy Equipment
- Livestock Equipment & Supplies
- Cattle
- Horses & Mules
- Sheep & Goats
- Swine
- Artificial Breeding
- Hog Equipment & Supplies
- Poultry & Supplies
- Feed & Seed
- Fertilizer
- Plants
- Fruits & Vegetables
- Nursery
- Lawn & Garden
- Services Offered
- Custom Work
- Help Wanted
- Situations Wanted
- Business Opportunity
- Trucks & Trailers
- Autos
- Notice
- Lost
- Found
- Pets
- Household
- Miscellaneous
- Real Estate

LOCAL CLASSIFIED ADVERTISING RATES

16c per word
2 00 minimum charge
Use This Handy Chart To Figure Your Cost

Words	1 Issue	3 Issues
12 or Less	2 00	4 80
13	2 08	4 99
14	2 24	5 38
15	2 40	5 76
16	2 56	6 14
17	2 72	6 53
18	2 88	6 91
19	3 04	7 30
20	3 20	7 68

KEYED ADS (ads with answer coming to a Box Number, c/o Lancaster Farming) 50 cents additional

Ads running 3 or more consecutive times with no change billed at 20 per cent discount

Deadline Thursday morning at 9 of each week's publication

Lancaster Farming
P O Box 366
Littitz, PA 17543
717-394-3047
or Littitz
717 626 1164

FARM EQUIPMENT

IH Mounted Corn picker, Model 234, with shelling and husking unit. Excellent condition, \$2800. Ralph Weaver, Muncy, Pa 17756 (717)584 2389

For Sale NH 852 round baler Also NH 90 bale handler, used very little 301-842 2997 Wash Co., MD

For Sale 5200 ft 4" irrigation pipe, Chrysler V8 pump \$5000 Franklin Co 717-328-5520

NEW LEADER Lime & Fertilizer Spreaders

Annville Body Co
RD #3
Annville, Pa 17003
Phone 717-867-4631

For Sale - Case 4' bottom auto reset plow, semi mtd JD 4-row 994 corn planter, dry or liquid Graham chisel plow 5 tooth on rubber 717 367-2638

Metal shear 12"x1/4" cut, value \$17,000 using every day, must see in operating, heavy 11 ga 10' apron brake, 15 ton mechanical punch with motor, 215-286-5146

JF 440 gas wheel loader with 3 pt. & PTO, \$3500

DENNIS M. MILLER EQUIPMENT
Rt 22 Grantville, PA 717 838 1888 anytime 717-469-0937 daily

For Sale NH 36 & 24' elevators

NH Super 68 baler, good for corn fodder, MC 7D 7 ft rotary scythe (sharp), Nicholson hay tedder, ground driven & PTO 717-687 6553

Platform scales, 15 ton, new deck, working, good condition, \$400 215-932-2153

For Sale Farmall Super C with fast hitch, cultivators, 2 bottom plow, new paint

Farmall cub, w/hyd dirt plow, belly mower, and/or Snow Blade sickle bar mower

7 ft BN tractor mower Ford & IHC 3 pt hitch 2 row cultivator 717 687 6553

For Sale 503 Int combine with cab, 4 row wide, gas, good condition, best offer, Verneer high lift bale carrier, 215 670 3584

FARM EQUIPMENT

Crawler Tractor Parts.

New and Used Parts Available for Cat, Allis Chalmers, IHC, Case, John Deere and others

Rubber tired construction equipment parts available for Hough, Michigan, Galion and Cat Road Graders

VILSMEIER EQUIPMENT INC

Route 309
Montgomeryville, Pa, 18936
Phone 215-699-3533

For Sale - Ford 618 silage blower 4 wheel mounted Lily hay rake, like new 7' scraper blade with 3 pt hookup Stump Acres 717-792-3216 York Co

Hay wagon, heavy gear, flatbed, \$250 215-932 2153

For Sale - Chisholm-Ryder snapbean harvesters with hydraulic dump wagons, reconditioned & painted 609-769-3183

Asplundh 9" portable chipper, runs ok but needs clutch & PTO shift, \$1500

Wisconsin VH4 with clutch & pulley, electric start, good condition, \$650

VILSMEIER EQUIPMENT INC.

Rt 309
Montgomeryville, PA 18936
Phone 215 699-3533

Int 3414 gas wheel loader backhoe with cab, \$4500

DENNIS M. MILLER EQUIPMENT
Rt 22 Grantville, PA 717-838-1888 anytime 717-469-0937 daily

For Sale - New bale thrower wagons, flat bed wagons with 6, 8, 10 ton gears, also Zimmerman elevators 28, 32, 26, 40 ft lengths, Also plywood feed bins, will deliver and install, Stoltzfus Wood work, Rd 2 Box 2280, Gap, PA 17527, 717 442 8972, 1 mile north of Gap along 897

For Sale NH 55 rake NI 752 crusher (sharp) Pix Stone stone picker 717-687 6553

Hay elevator, 28', good condition, Caster wheels with motor, \$250 215-932 2153

FARM EQUIPMENT

For Sale - Fox 2000 corn chopper, 2 row head, 30" centers, elec sharpener, excellent condition \$3500, 717-529-6670

MF 35 tractor with loader, 3 pt hitch, live PTO, drawbar, chains, exc cond \$2850 Oliver 2 bottom 14 inch trip-back plows, 3 pt hitch, \$275 Howard County 301 854-6149

For Sale - JD 4620 Excellent condition, dual wheels, roll guard, power shift, 3000 hrs \$17,800 Call after 5 P M 717-837 0724 or 837 3214

For Sale - JD 10' KBA transport disc, Acorn barn cleaner with 20' elevator, 1 yr old, 8 hole hog feeder 717 365-3562

For Sale - Oliver Model 200 12' transport field cultivator with folding wings, good condition, Asking \$600 Call after 8 P M 215 562 4220

For Sale - 1978 JD 2440, 1975 JD 1530, McCormick 990 7' haybine All equipment in good condition 215-267-3281

Farmers & Dealers - Your advertising pays for itself when you advertise your equipment in the farm equipment section 717-394-3047 or 717-626-1164

SPECIAL BALER TWINE SALE \$20 00 per bale Jack hammer rental John L Zook, 2 mile east of Intercourse on Rt 340 Lancaster County 717-768 8857

510 combine, 8 yr old, good condition, 16' grain table, hydro cab with AC, Gehl forage wagon, practically new, used 150 acres, 10 ton running gear, 301 376-3448

For Sale - Binders, Binders, Binders, IHC ground drives and PTO's corn binders both with wagon loaders, also #7 ensilage cutters, all fresh in from New York 717 687 6553

For Sale 2 combines, 1 JD model 55 high/low with 14' grain head, 1 JD model 95 with 14' grain head, both in good condition \$3,950 00 each, 215 766-0479 eves Bucks Co

FARM EQUIPMENT

IHC model 816 9' mower conditioner, real good shape, make offer, NH model 47-7' trailer mower, good shape \$275, 717-687-6553

IH 966 hydro tractor with cab, Grimm hay tedder, Farmall Super A with cultivator and 1 bottom plow, 215-255-4311

DISCOUNTED TO SELL New Hale Pump with John Deere 80 H P diesel engine, on trailer 6' Aluminum Pipe with Couplings, like new WW 45 AG-RAIN Water Winch with Nelson Gun, extension for sweet corn, double reel, heavy duty hose, like new Call after 5 p m 201-329 2765

For Sale - IH 806D, WFE, new tires, paint, clutch, TA, excellent condition, \$9800 717-837-3214

For Sale - McCormick Deering PTO corn binders, Papec ensilage cutters, 1 used very little, Samuel R Beiler, 141 New Holland Rd, Gordonville, PA 17529

New Tractor Sale - 35 hp - \$7000, 41 hp - \$7800, 48 hp - \$8400, 60 hp - \$9800, 90 hp - \$13,200 All above have PS, live PTO, 3 pt For all your equipment needs call 717-548-2896 Lanc Co

FARM EQUIPMENT

Adams motor grader, \$2500

DENNIS M MILLER EQUIPMENT
Rt 22 Grantville, PA 717-838-1888 anytime 717-469-0937 daily

JD 4020 diesel, Syncra range trans, WF, 814-793-4293

NI mounted corn picker 305 gathering unit & 315 sheller, has only picked 700 acres, 2 wheel farm trailer 6'x11', 34' & 48' exhaust fans, 60 ft extension ladder, Fisher blacksmith anvil, heavy duty floor supported bench vice Call 717-398-2270 or 753-3457 evenings

955H 60A D8 2U 18000 Int Truck Tractor, 25 ton Roger Low-Boy Call 215 767-3534

For Sale - NH 36 crop chopper, 717-362-9233

JD 3 bottom 14' roll-over plow 717-665-3295

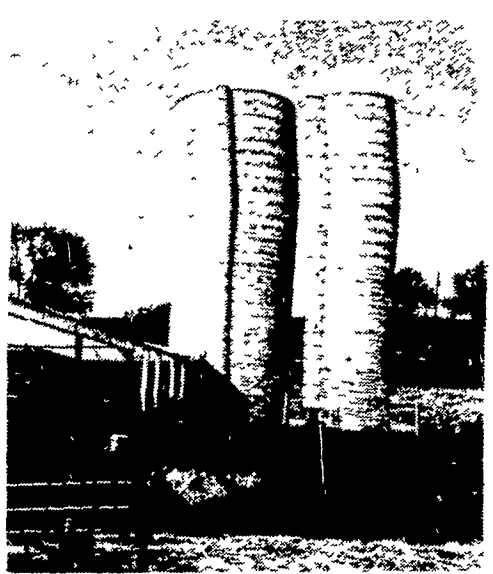
For Sale - Dion forage wagon with roof and 3 beaters NH running gear 717-367-3833

Wanted- Wisconsin engine with reduction gear, running or for parts, 717-687-6553

For Sale - New 8x18 rack wagon on 8 ton gear \$1095 One pair 16 9x34 tires 35% and 15% rubber 717 733-9379

LANCASTER SILO CO., INC.

2008 Horseshoe Road - 2436 Creek Hill Road
LANCASTER, PA 17601



MANUFACTURER & BUILDER OF QUALITY WET-CAST CONCRETE STAVE FARM SILOS

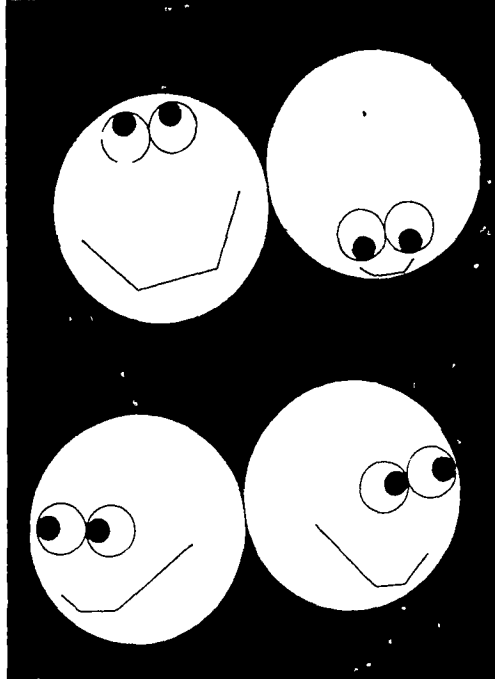
"LANCASTER SILO'S BUILT BETTER"
ROOF - ALUMINIZED STEEL OR COLOR
CHUTE - STAVE OR STEEL AVAILABLE
RODS - DISCHROMATED 9/16"
HI-STRENGTH
SPREADERS - BOX BEAM CONSTRUCTION
DOOR FRAMES - STEEL REINFORCED CONCRETE
DOORS - HINGED REDWOOD DOOR OR REMOVABLE DOOR w/FORMED STEP
INTERIOR - HAND TROWLED PLASTER w/ WATER PROOF CEMENT & SEALER

VAN DALE

VAN DALE & STARLINE SILO UNLOADERS
WE SPECIALIZE IN REPLACEMENT & NEW UNLOADERS WHEN THE SILO IS EMPTY, REPLACE YOUR WORN UNLOADER BEFORE FALL FILLING.
CALL US FOR INSTALLED PRICES

WE SPECIALIZE IN CUSTOM-BUILT
"CONVEYORS"
"TAPER-BOARD FEEDERS"
"BELT-FEEDERS"

FOR COMPLETE INFORMATION, CALL:
Larry Hiestand - Office - 717 — 299-3721
Wayne Lloyd - Sales - 717 — 299-3722



DON'T LOOK ANY FURTHER!
YOU'LL FIND IT IN
LANCASTER FARMING'S CLASSIFIEDS

VISITING AG PROGRESS DAYS? DON'T MISS OUR DISPLAY IF YOU HAVE ANY THOUGHTS ABOUT BUYING OR SELLING A FARM

Complete picture brochures available describing 21 farm listings throughout Central, Pa. Color pictures on display.

WE WOULD BE PLEASED TO CHAT WITH YOU



FARM AND LAND DEPARTMENT

Fred Strouse (814) 364-1705
Don Myers (814) 422-8111 (Lewisburg) Larry W Platt (717) 568-5563
Mel Rockey (814) 466-6688 (Bedford) Richard D Reed (814) 839-4271

Frederick J. Kissinger, Realtor
William H. Leonard, Realtor
245 S. Allen St.,
State College, PA 16801
(814) 234-4000

The Professionals in Farm Real Estate Service