



Recoiling from the effort of his throw, the champion bale thrower, Ed Kegerreis, R2 Myerstown, hurled the bale of straw 27'2".

## Lebanon Area Fair



Rodney Eckenrode, 10, and Eric Harnish, 10, enjoy the commercial exhibits at the Lebanon Fair.

# QUALITY

your best reason for wanting mfs "Stor-Age"

The first new bin in 20 years

So strong just 1/4 of the roof sheets support over 2,000 lbs.

The rugged quality of The first new bin in 20 years has made mfs the most wanted bin for grain drying and storage in America. If you live between New York and Colorado or between Texas and Canada there is an mfs dealer available to supply you with mfs Grain Bins Bin Unloading Augers Fan and Heat Units Stirring Devices Grain Spreaders as well as complete farmstead planning service.

EVERYONE TRIES TO BUILD A BETTER GRAIN BIN mfs IS DOING IT!

**HADE'S EQUIPMENT**  
(Glenn Hade)  
10355 Five Forks Rd  
Waynesboro, PA 17268  
Phone 717-762-4985

A building with almost unlimited possibilities . . .

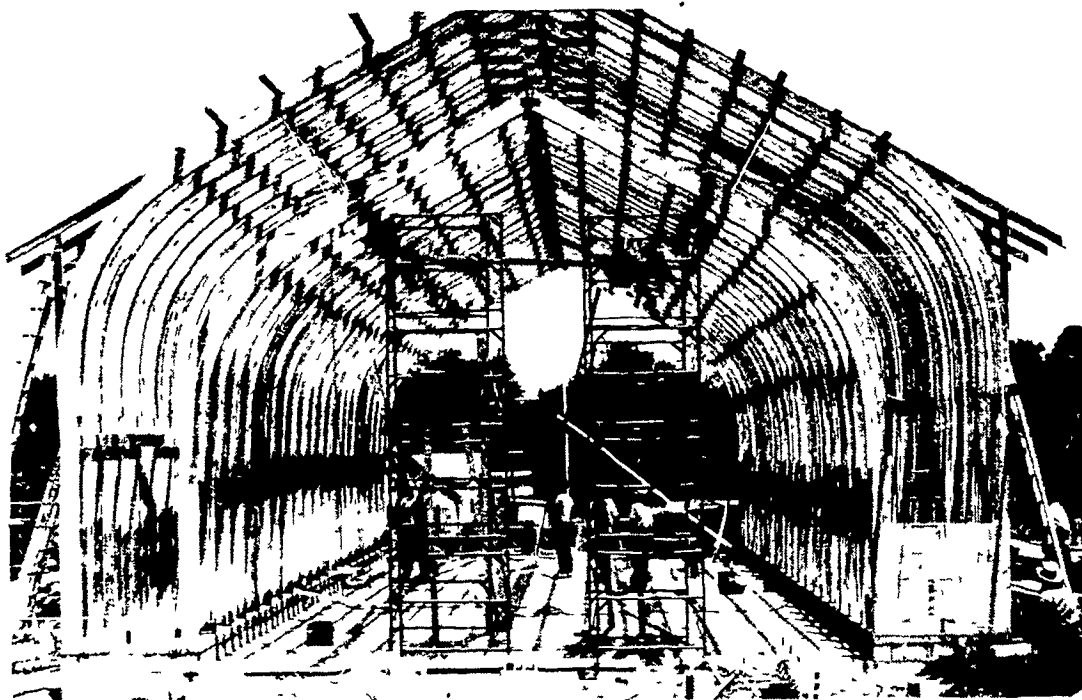
1700



1830

The Evolution of the American Corncrib  
1977

Laminated Uni arch design makes all inside space useful — even close to walls and permits economical installation of roofing and siding materials



Large Volume Grain and Storage Implement Building

WHOLESALE & RETAIL  
DISTRIBUTOR FOR:  
**SCHLESSMAN'S SEED CORN**

# TITAN WHEAT

(Data From Universities)

	Height	Straw Strength	Winter Hardiness
TITAN . . . . .	Med. . . . .	VG . . . . .	EX . . . . .
S-76 . . . . .	Short . . . . .	VG . . . . .	G . . . . .

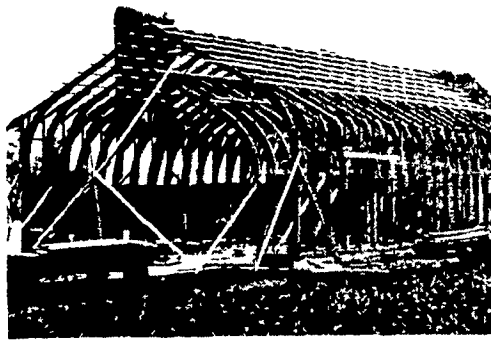
YIELD (Avg. of 6 Trials)

TITAN - 68.1 Bu. Per Acre  
PIONEER S-76 - 62.5 Bu. Per Acre

**BARLEY, WHEAT, RYE  
and ALFALFA  
BALER TWINE**

SEE US AT AG PROGRESS  
DAYS - AUGUST 19-20-21

**BOYD'S SEED CENTER, INC.**  
306 Iona Rd., Lebanon, Pa. 17042  
Phone: 717-272-8943



Beginning with the earliest American farms, corn on the cob was seasoned and dried by allowing air to flow around it; this kept away mold. From simple, square cribs of alternately piled logs, covered by a sloping roof, the corncrib evolved to the drive-in crib. The sidewalls always slanted outward at the eaves. On a great many mountain farms this was the beginning of barn architecture, for by adding doors in the driveway wall, you have the simplest American barn.

Today, a much more efficient structure for the storage of corn — along with large farm implement storage — is provided by the imaginative use of the Laminated Rafter. The exceptional strength of this aesthetically pleasing arch may be readily combined with simple construction, requiring a minimum amount of materials and erection time. It is a structure that permits great flexibility, because all inside space is useable, offering so many possibilities for a variety of farming needs.

**Rigidply Rafters, Inc.**  
Structural Imagination for Today's Farming

Telephone: (717) 866-8581

**RIGIDPLY RAFTERS, INC.**  
MANUFACTURERS of  
LAMINATED RAFTERS  
and WOOD ROOF TRUSSES

RICHLAND RD1, Pennsylvania 17087  
OAKLAND RD2, Maryland 21550

A building with almost unlimited possibilities:

- ▶ Over 5,000 bushels ear corn storage
- ▶ Sheltered area to load and unload
- ▶ To hold against price fluctuations
- ▶ Convenient feed-preparation space
- ▶ Large equipment storage flexibility
- ▶ Up to 1,440 sq. ft. for other crops