

## State 4-H winners — lots of smiling faces



First place in riflery went to Washington County's team shown from left: Bill Sprague, coach; Kenny Briggs, Rob Sprague, Sharon Zeech, and Greg Ouast.



Washington County's first place consumerama team shown from left was: Rindy Sprague, Andre Lombard, Stacey Martin, and Corinne Dunkle.

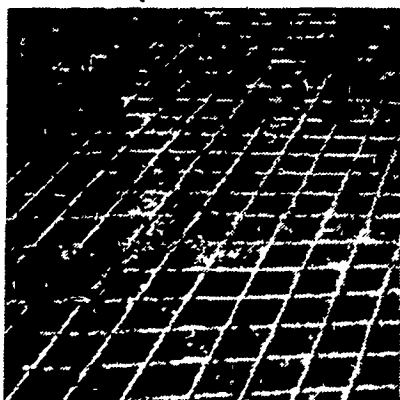


Fayette County youth won the archery contest for the second consecutive year at Penn State. Shown from left are: Donald Bridge, Belle Vernon; Ross Higbee, Dawson; Donald Bridge Sr., the coach; Chuck Cumberland, Dawson; and Wade Leonard, Dawson.

## Slick Problem Areas?

### DAIRYMEN: CONCRETE-GROOVING Cuts Grooves in Concrete Floors

- PREVENT SPLITS
- INSTALL IN HOLDING AREAS
- IMPROVE HEAT DETECTION
- INSTALL IN FEEDING AREAS



Grooves 1/2' wide x 1/4' deep 4' apart

- PREVENT BROKEN LEGS
- ELIMINATE COWS SKIDDING
- PREVENT CRACKED CONCRETE
- INSTALL IN ALLEYS

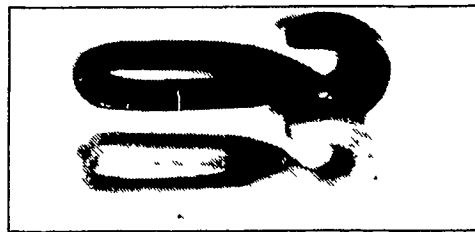
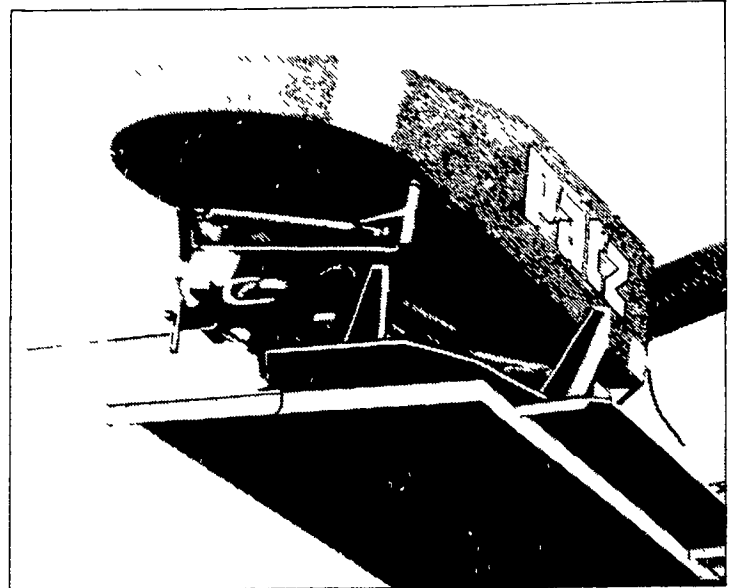
Why not join the increasing number of dairymen throughout the Eastern states who now receive profitable benefits from this service.

**CONTACT US TODAY!**

## CONCRETE GROOVING, INC. MERLE BECKER

399 S. Reading Rd., Ephrata, PA 17522  
PHONE (717) 733-7589

# THE PATZ SOLUTION:



Heavy-duty link (top) and extra heavy-duty link (bottom) for long chains and heavy loads



Adapts to varied installation layouts

## Rugged, Dependable Gutter Cleaners

Patz makes gutter cleaners you can depend on year after year. The secret to Patz performance is the proven one-piece forged steel hook-and-eye link that lets you adjust chain length or replace links and flites by hand, without tools.

The all-steel slide and steel flites with wear shoes are engineered to withstand the rugged wear of everyday operation.

Thinking of stacking manure? Consider a Patz Tripod Supported Stacker or a Swinging Slide Stacker. You'll save with Patz because one motor and reducer run both the gutter cleaner and stacker.

Before you choose a gutter cleaner, take a close look at Patz. You'll find Patz performance means fewer problems for you, and more time to manage your livestock operation for greater profit.

## SEE THE PATZ EQUIPMENT DISPLAY AT AG PROGRESS DAYS AUG. 19-21

### DISTRICT MANAGER

GEORGE HEATH 472 Woodcrest Dr Mechanicsburg, PA 17055 717-737-0002

**ALEXANDRIA**  
MAX ISENBERG  
814-669-4027

**ELLIOTTSBURG**  
CARL BAER  
717-582-2648

**QUARRYVILLE**  
UNICORN FARM SERVICE  
JAMES E LANDIS  
717-786-4158

**BALLY**  
LONGACRE  
ELECTRIC  
215-845-2261

**HAMBURG**  
SHARTLESVILLE  
FARM SERVICE  
215-488-1025

**TERRE HILL**  
TERRE HILL  
SILO CO INC  
215-445-6736

**BEDFORD**  
BENCE FARM  
EQUIPMENT  
814-623-8601

**LEBANON**  
MARVIN J HORST  
DAIRY EQUIPMENT  
717-272-0871

### MARYLAND DEALERS

**BELLEFONTE**  
LUCAS BARN  
EQUIPMENT  
814-383-2806

**McALISTERVILLE**  
SANER FARM  
SYSTEMS  
717-463-2606

**HAGERSTOWN, MD**  
TRI-STATE  
FARM AUTOMATION  
301-790-3698

**BELLEVILLE**  
MACLAY & SON  
717-935-2101

**MILLERSBURG**  
LANDIS  
LABOR SAVERS  
717-692-4647

**KENNEDYVILLE, MD**  
PINDER SERVICE CO  
301-348-5263

**CAMP HILL**  
LLOYD SULTZBAUGH  
717-737 4554

**MILTON**  
LANDIS FARMSTEAD  
AUTOMATION  
717 437-2375

**LINEBORO, MD**  
WERTZ GARAGE, INC  
301-374-2672

**CHAMBERSBURG**  
CUMBERLAND FARM &  
DAIRY INC  
717-263-1965

**PIPERSVILLE**  
MOYER  
FARM SERVICE  
215-766 8675

**STREET, MD**  
P & S EQUIPMENT, INC  
301-452-8521