

Vegetable field day on tap Wednesday

SALISBURY, Md. — The University of Maryland's vegetable research farm near Salisbury will host its third annual field day Wednesday, August 20 from 9 a.m. to 12:30 p.m. Both home gardeners and commercial growers are invited.

Field day coordinator Franklin D. Schales reported that wagon tours of research plots will run on a continuous basis all morning, as needed. Schales is associate professor of

horticulture and Extension vegetable crop specialist for the University of Maryland.

Representatives of the Maryland Agricultural Experiment Station and the Extension Service will be on

hand to make short presentations and answer questions at each stop.

In view of the hottest summer in Maryland since 1955, drip and sprinkler irrigation studies are expected to draw special interest.

Other topics to be covered will include variety and

mulching comparison trials; insect, weed and plant disease control; and breeding programs with tomatoes, sweet potatoes and cantaloupes.

Soft-drink machines will be available in the administration building to help quench thirsts if the day is hot.

The vegetable research farm is located two miles west of Salisbury along Quantico road (highway 349), on Maryland's lower Eastern Shore. Watch for a marker sign on your right-hand side, identifying the University of Maryland research substation.

Delaware ag museum to open

DOVER, Del. — The Delaware Agricultural Museum's GRAND OPENING will be Saturday, August 16. Doors will open promptly at 10 a.m. Admission is free that day, however, any donation large or small will be gratefully accepted.

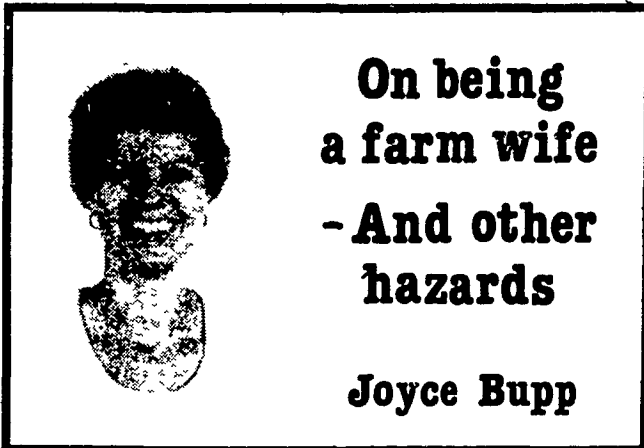
The days' activities will include the arrival of Gov. Pete duPont, and former Governor Tribbitt, in addition to wheat threshing, shingle sawing, quilting, blacksmithing, millwrighting, basket making, chair caning, candle making, and wood carving.

Exhibits on wheat processing, butchering, poultry, horses, and more will be on view.

The Levies and Laces Square Dance Association will perform throughout the day as well as the "Old Grass-New Grass" bluegrass ensemble. The Kent County Pomona Grange members will have a refreshment stand open from 11.00 a.m. until closing.

The Delaware Agricultural Museum, a private, non-profit organization, is located in Dover on the duPont Highway (Route 13), one-quarter of a mile south of the Delaware State College entrance.

The phone number is 302/734-1618, between 9 a.m. and 5 p.m. Tuesday through Saturday.



On being a farm wife - And other hazards

Joyce Bupp

I wonder if it might be in the chapter on Cockroaches? Or perhaps under the heading of "Ants and Other Mymenopterous (who?) Pests?" Possibly the solution is in the section labeled "Bedbugs, Fleas, Lice, Parasitic Mites and Ticks?"

None of those things listed in the advertising for a pest control book sounds quite like what we need.

Wait Here it is. The answer just might be found somewhere in the pages of "Occasional Invaders and Miscellaneous Pests." Maybe I'd better order this book.

As you have surmised, we've developed a real problem in our household. It's a frustratingly persistent pest. And it's not the kind that is likely to be eliminated with a string of sticky paper, a wire trap or an aerosol can.

It's a telephone salesman. This particular telephone salesman generally rings in about suppertime, or slightly later in the evening, calling long distance, supposedly from California.

He steadfastly refuses to

take "NO" for an answer to his bid for an assortment of tools that he always has "on special." In fact, lately he's even taken to calling back the second time when we finally hang up on his persistence. And this certain pain in the ear is just the latest in an assortment of telephone parasites that are abusing the farming community with their pitch for a variety of goods.

They range from these tool sales characters, to pitchmen for machinery cleaners to a character who periodically calls up with this fantastic "real cheap" price on Holstein advertising pens which they just happened to "overrun" during printing.

I try to be reasonably polite the first time they run me out of the garden, or down from the attic or up from the basement. But when they call, several nights a week, twice a night, enough is enough.

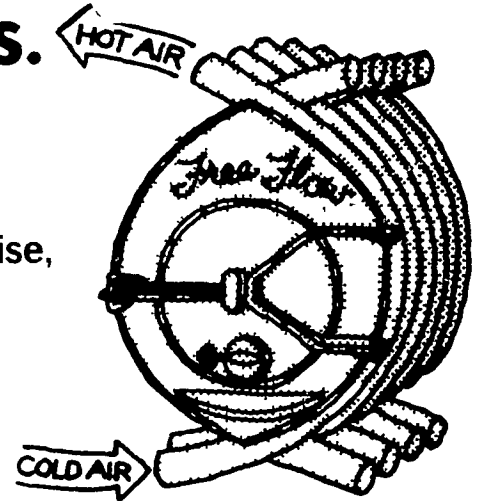
And just as soon as I can get this guy's firm's name and location, I'd like to share this story with not only the phone company, but the Better Business Bureau as well.

Is the Free Flow™ Stove just a lot of hot air?

IT CERTAINLY IS.

It lets you heat a room
Without electricity
Without a fan
Without a peep or noise,
warm air is circulated.

The walls are warm.
Even the floor is warm.
But the stove stays remarkably cool.



The Stove that moves heat through your whole house is available at:

HEISTAND'S ENERGY CENTRE

1800 State Street, East Petersburg, PA 17520
717-569-7397

Flemington, NJ Agricultural Fair Rt. 31, Flemington, NJ

The New Jersey Horse Pulling Contest Thursday, August 28

2 & 8 P.M.

Horse pulling moves to the grandstand area
Heavyweights added to contest this year

Several major changes this year in the Horse Pulling Contest should make this event one of the Fair's top attractions. For the first time in nearly 20 years the contest moves back to the track in front of the grandstand and at prime time. Lightweights begin their pull at 2:00 p.m., Heavyweights at 8:00 p.m. on Thursday, August 28.

The Heavyweight teams, weighing in at over 3200 lbs., will return to the contest this year, and will feature teams from over much of the midwest, New England, Canada, as well as, New Jersey, Pennsylvania, and New York.

Judge will be Al Dodge, Willseyville, New York.
Announcer will be Skeet Ludwig, Rushford, New York.
Entry fee for teams will be \$10.

The purse for the lightweight and heavyweight horse pulls is as follows:

1st - \$300	4th - \$150	7th - \$100
2nd - \$250	5th - \$100	8th - \$100
3rd - \$200	6th - \$100	9th - \$100
		10th - \$100

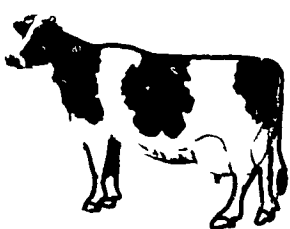
Teams will be weighed at the fairgrounds, on the scales in the center of the infield area. Lightweights must be weighed, Heavyweights need not be weighed. All horses must be registered with the officials.

Weigh-in & Registration 9 a.m. - 11 a.m. Thursday
Horse Pulling Contest will be conducted under NY State Rules, slightly revised.

**This is An Open Competition,
All Pullers Are Welcome**

For Further Information Call
201-782-2413

Do You Want to Beat The Summer Slump In Milk Production?



INQUIRE ABOUT

LACTO-CAL

Farmers are increasing milk production more than 2-4 lbs. per cow per day

- ★ High Energy
- ★ Cows Like It
- ★ Improved Feed Efficiency
- ★ Improved Herd Health
- ★ Increased Milk and Butter Fat Production
- ★ Depresses Methane Gas Production
- ★ Economical

DISTRIBUTED BY: **HESS FARM SUPPLY**

RD 3, New Holland, PA 17557 PH: 717-354-7972

AUTHORIZED DEALERS:

SYLVAN G. RESSLER
Box 30, Bart, PA
717-786-2103

VAN-MAR FEEDS, INC.
West on Miller St in
Shoemakersville, PA
215-926-2121 or 215-926 1230

"Greater Profits Today Require Peak Efficiency and Higher Production"